



Investment | Development | Advisory



OFFICE SPACE FOR LEASE

South State Commons II

1000 East Oakbrook Drive, Ann Arbor, MI 48104

January 24, 2024

MAVD
2723 South State Street, Suite 250
Ann Arbor, MI 48104
(734) 930-6700 | mavid.com

South State Commons II

1000 EAST OAKBROOK DRIVE
ANN ARBOR, MI 48104

EXECUTIVE SUMMARY



OFFERING SUMMARY

Available SF:	Level 1 North: 17,743 SF
	Level 1 South: 9,125 SF
	Level 3: 29,001 SF
Available Date:	1Q 2024
Building Size:	130,741 SF
Market:	Ann Arbor
Location	State Street, north of Eisenhower Blvd.

PROPERTY OVERVIEW

Located in Ann Arbor's Southside district, this four-story office building is architecturally stunning. Developed, managed, and leased by MAVD, 1000 East Oakbrook is the largest of the three buildings on our South State Commons campus. The curved glass facade leads into a beautiful, contemporary lobby featuring a mix of industrial style and modern elegance. The building is also fitted with state-of-the-art technology, including fiber optics and forward-thinking space design in both tenant spaces and common areas.

The building has ample free parking, both surface and structured, and is easily accessible from I-94 or downtown Ann Arbor. This along with monument signage and a signalized intersection add convenience to this Class A office property.

AVAILABLE SPACES

SPACE	LEASE RATE	STATUS	SIZE (SF)
Suite 100 (North)	\$32.00 SF/yr	On Market	17,743 SF
Suite 150 (South)	\$32.00 SF/yr	On Market	9,125 SF
Suite 300	\$32.00 SF/yr	On Market	29,001 SF

Presented By:
Jeffrey Harshe
(734) 929-1007
jharshe@mavd.com



South State Commons II

1000 EAST OAKBROOK DRIVE
ANN ARBOR, MI 48104

LOCATION MAP



Presented By:
Jeffrey Harshe
(734) 929-1007
jharshe@mavd.com



South State Commons II

1000 EAST OAKBROOK DRIVE
ANN ARBOR, MI 48104

ADDITIONAL PHOTOS



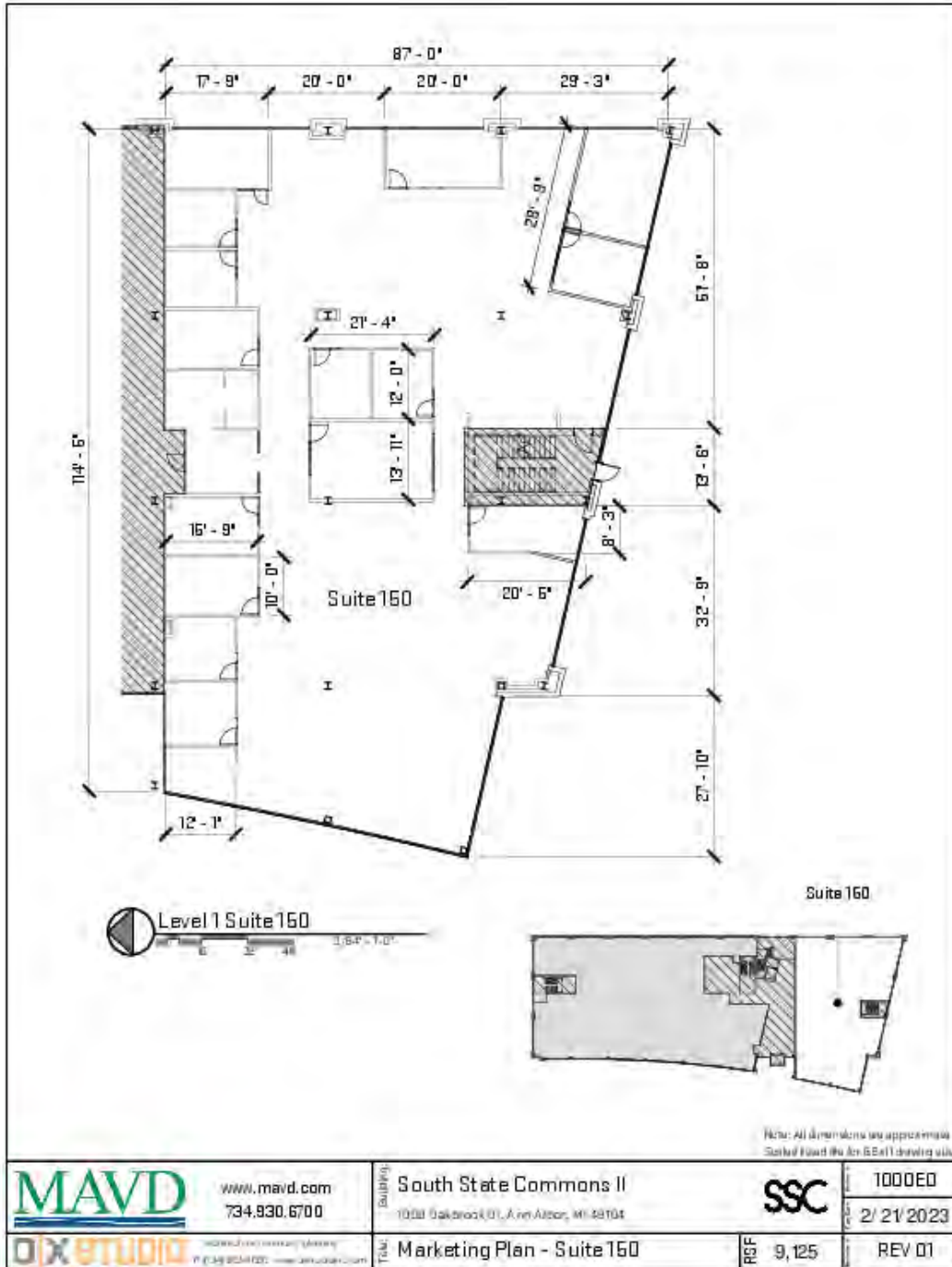
Presented By:
Jeffrey Harshe
(734) 929-1007
jharshe@mavd.com



South State Commons II

1000 EAST OAKBROOK DRIVE
ANN ARBOR, MI 48104

SUITE 150 (SOUTH) - 9,125 SF



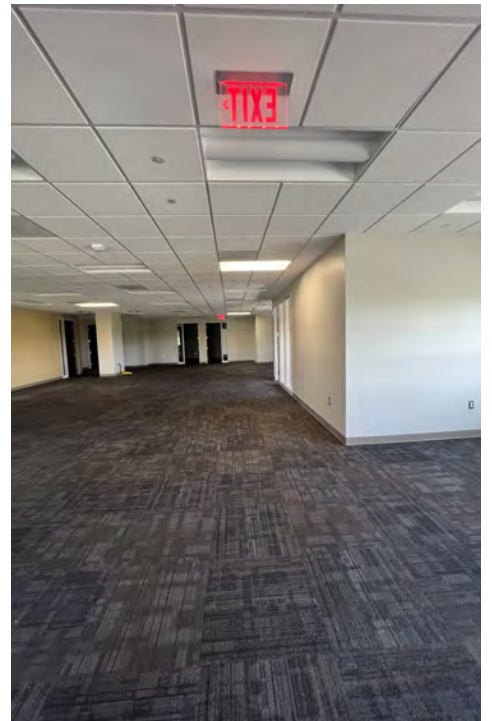
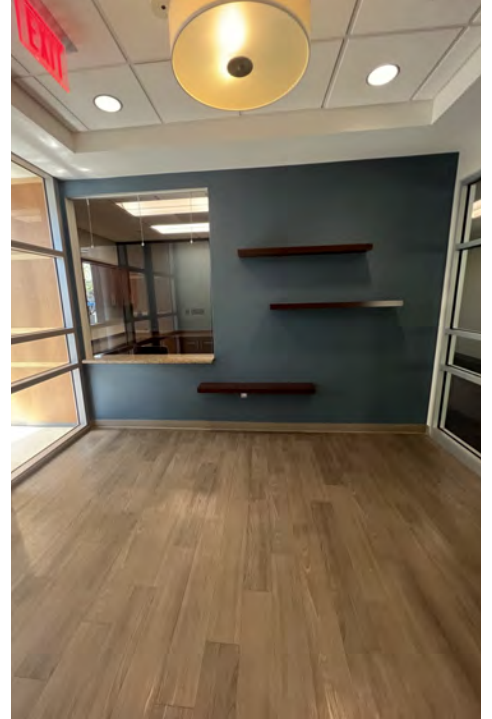
Presented By:
Jeffrey Harshe
(734) 929-1007
jharshe@mavd.com



South State Commons II

1000 EAST OAKBROOK DRIVE
ANN ARBOR, MI 48104

SUITE 150 (SOUTH) - PHOTOS



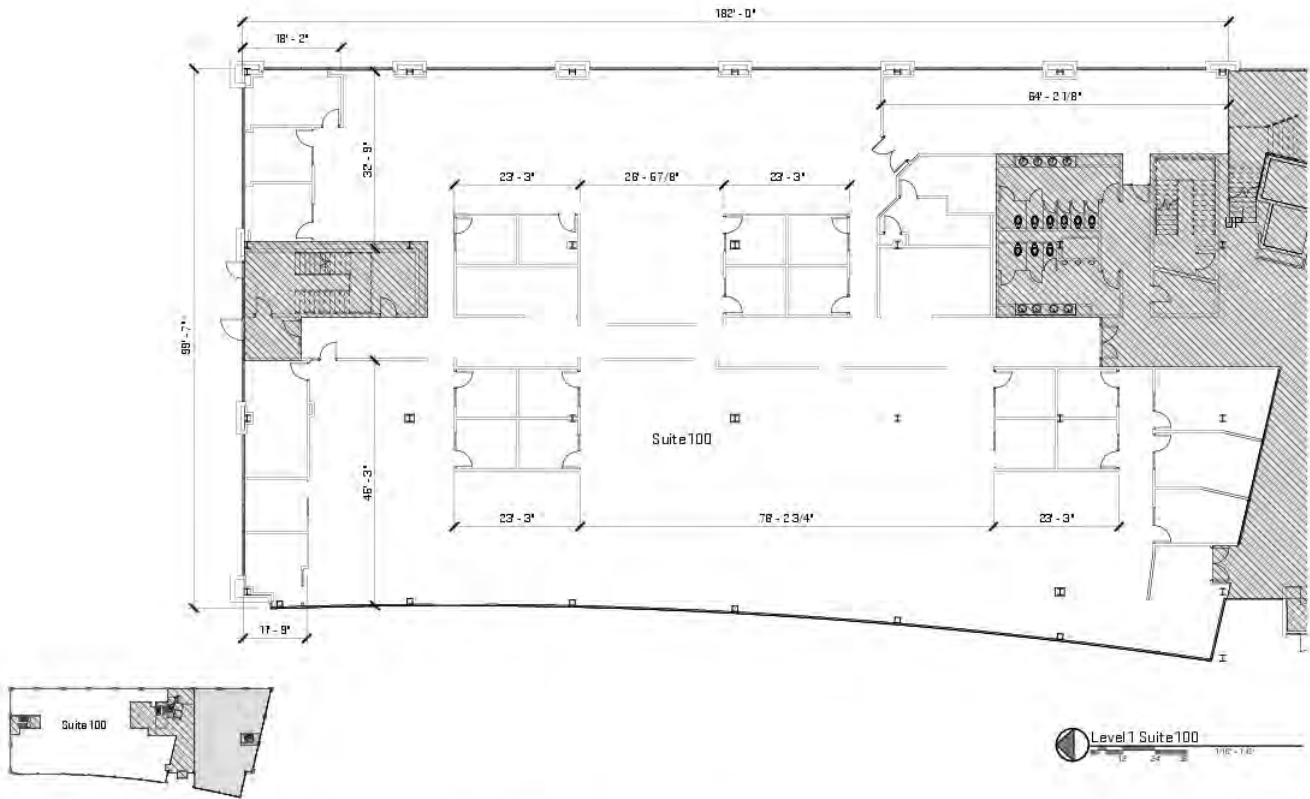
Presented By:
Jeffrey Harshe
(734) 929-1007
jharshe@mavd.com



South State Commons II

1000 EAST OAKBROOK DRIVE
ANN ARBOR, MI 48104

SUITE 100 (NORTH) - 17,743 SF



MAVD www.mavd.com
734.930.6700
OJX STUDIO GRAPHIC DESIGN & MARKETING
1100 1/2 4822 - www.ojxstudio.com



South State Commons II
1000 East Oakbrook Dr, Ann Arbor, MI 48104
Marketing Plan - Suite 100

Level 1 Suite 100
1" = 1'-0"

Note: All dimensions are approximate. See field notes for all dimensions.

REF	17,743	1000E0
		2/2/2023
		REV 01

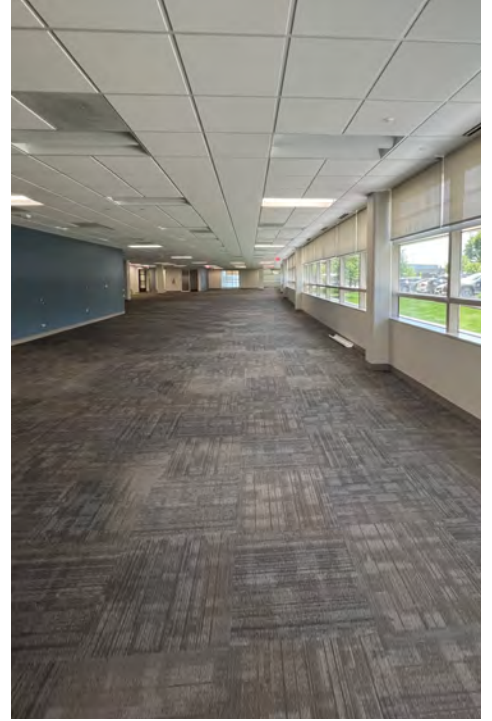
Presented By:
Jeffrey Harshe
(734) 929-1007
jharshe@mavd.com



South State Commons II

1000 EAST OAKBROOK DRIVE
ANN ARBOR, MI 48104

SUITE 100 (NORTH) - PHOTOS



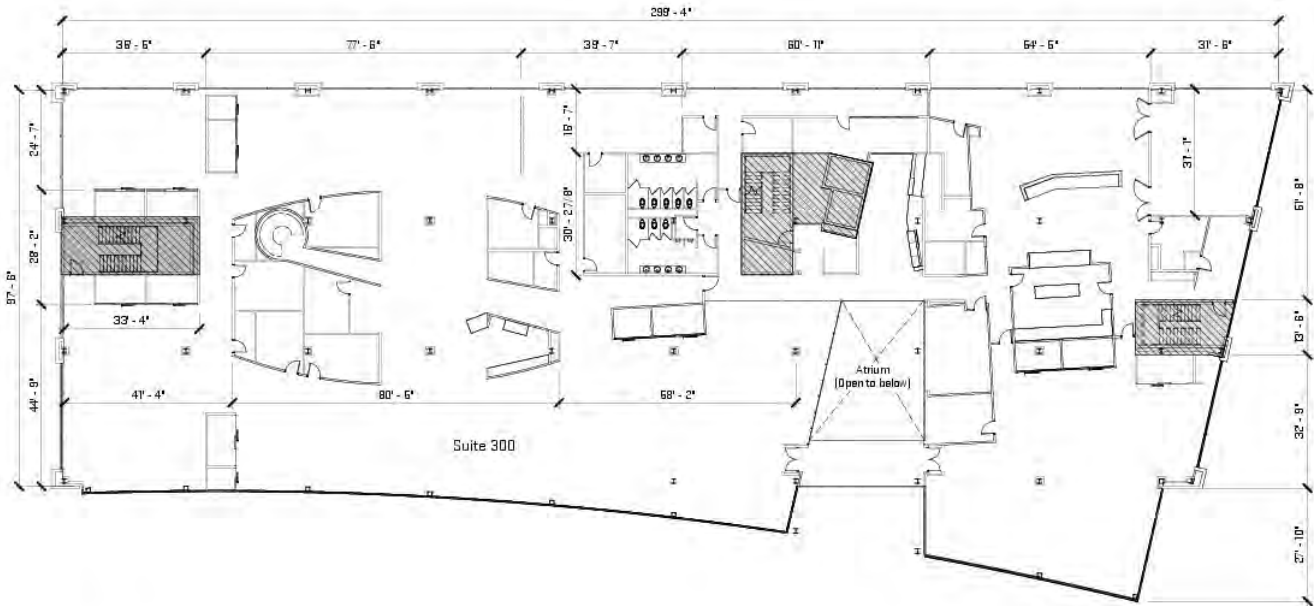
Presented By:
Jeffrey Harshe
(734) 929-1007
jharshe@mavd.com



South State Commons II

1000 EAST OAKBROOK DRIVE
ANN ARBOR, MI 48104

SUITE 300 - 29,001 SF



MAVD www.mavd.com
734.930.8700
A Division of JX Studio
11100 42nd Ave, Suite 1000, Miami, FL 33156



South State Commons II
1000 East Oakbrook Dr., Ann Arbor, MI 48104
Marketing Plan - Suite 300

R/SF

29,001

Note: All dimensions are approximate. See floor plan for TYP and notes.

1000E0
2/21/2023
REV 01

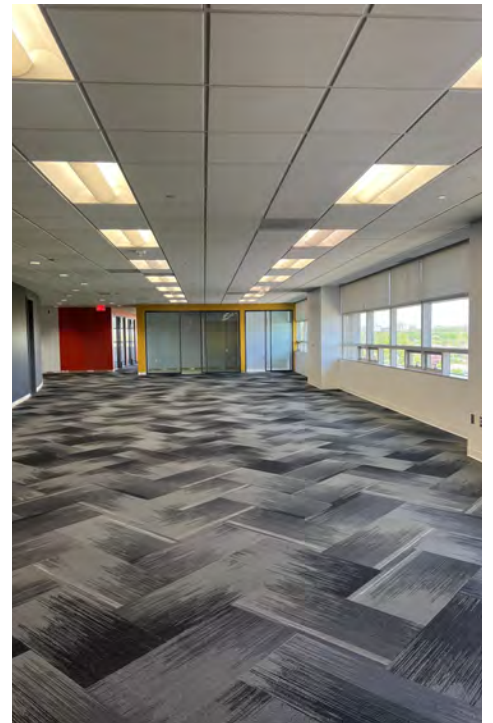
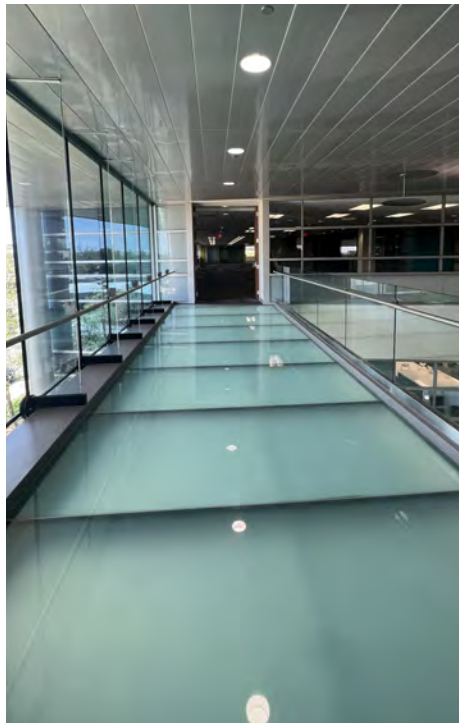
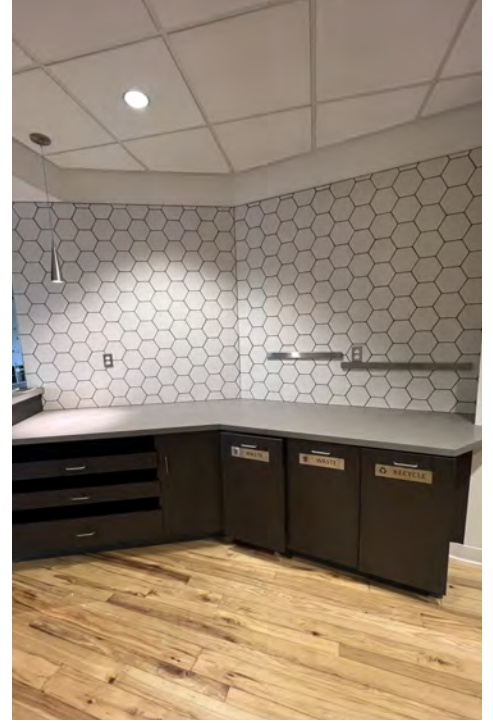
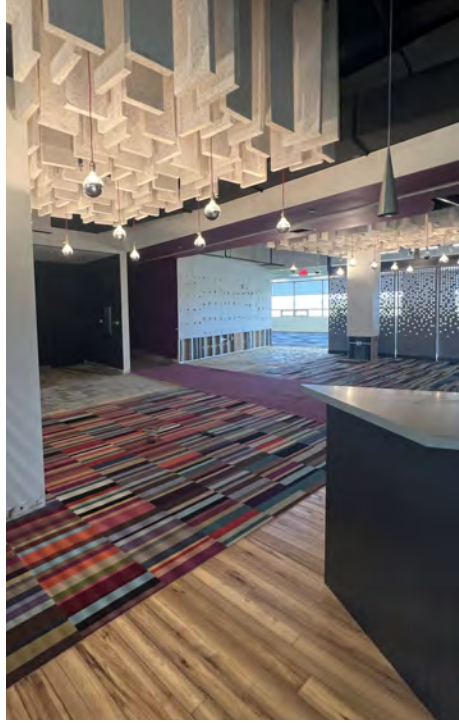
Presented By:
Jeffrey Harshe
(734) 929-1007
jharshe@mavd.com



South State Commons II

1000 EAST OAKBROOK DRIVE
ANN ARBOR, MI 48104

SUITE 300 - PHOTOS



Presented By:
Jeffrey Harshe
(734) 929-1007
jharshe@mavd.com

