

2500 NESCONSET HIGHWAY | STONY BROOK | NEW YORK



MEDICAL OFFICE CONDO FOR LEASE

Emily Pius

Licensed Real Estate Salesperson

Commercial Specialist

Direct: 631.804.2613 | emily.pius@elliman.com

Jason Merrell

Licensed Real Estate Salesperson

Commercial Specialist

Direct: 631.767.3033 | jason.merrell@elliman.com



2500 NESCONSET HIGHWAY | STONY BROOK | NEW YORK

MEDICAL OFFICE CONDO FOR LEASE

UNIT #:	6 D	OFFICE SIZE:	1140 SF
BASEMENT :	1140 SF	PARKING:	AMPLE
HEAT/HVAC:	ELECTRIC/CAC	LEASE PRICE:	\$2600 +

Excellent Opportunity to lease a Professional Medical Office Condo Unit in the famed Stony Brook Medical Office Park. Unit 6D offers 1140 SF of medical office space with an additional 1140 SF of unfinished basement for storage. Features waiting room, reception area, 4 exam rooms all with sinks and a private Physicians office with built in shelving. Ample parking in large lot. Conveniently located within minutes of SBU University Hospital and surrounded by national retailers on heavily traveled Nesconset Highway. Excellent demographic and extraordinary traffic counts that exceed 60K vehicles per day. Tenant pays utilities.

Emily Pius

Licensed Real Estate Salesperson
Commercial Specialist

Direct: 631.804.2613 | emily.pius@elliman.com

Jason Merrell

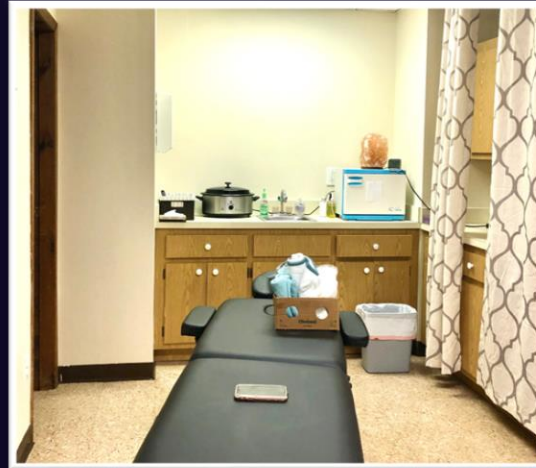
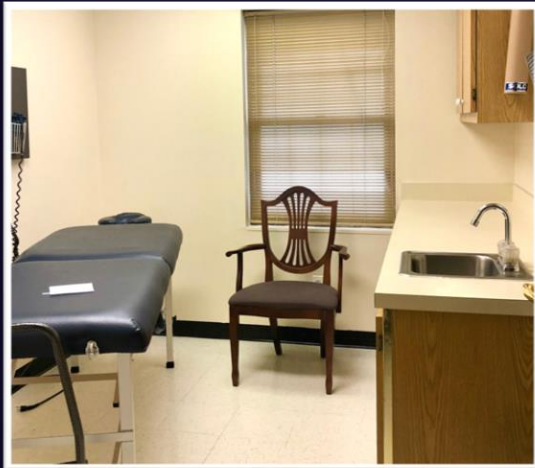
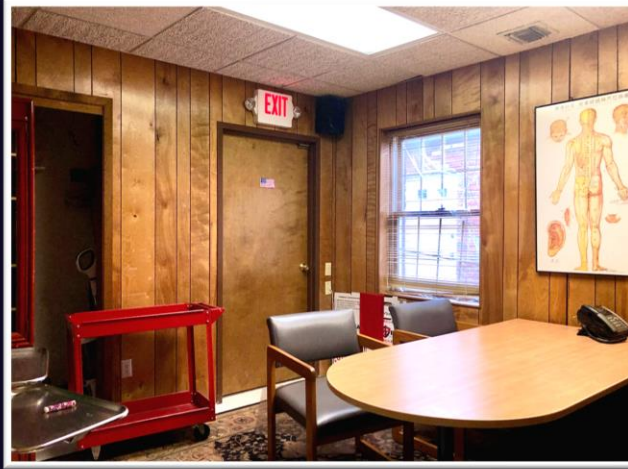
Licensed Real Estate Salesperson
Commercial Specialist

Direct: 631.767.3033 | jason.merrell@elliman.com

 **Douglas Elliman**
COMMERCIAL

2500 NESCONSET HIGHWAY | STONY BROOK | NEW YORK

MEDICAL OFFICE CONDO FOR LEASE



Emily Pius

Licensed Real Estate Salesperson
Commercial Specialist

Direct: 631.804.2613 | emily.pius@elliman.com

Jason Merrell

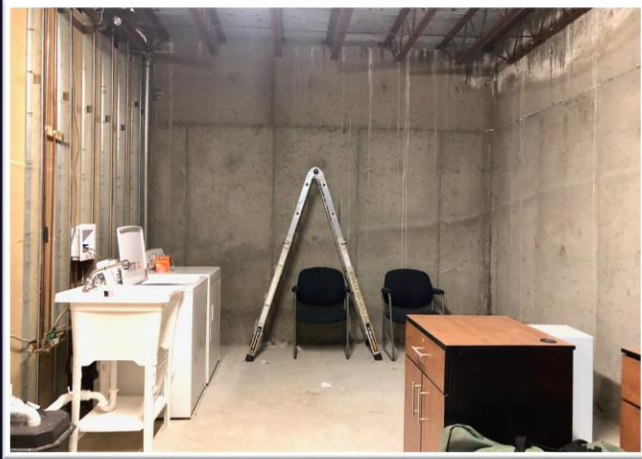
Licensed Real Estate Salesperson
Commercial Specialist

Direct: 631.767.3033 | jason.merrell@elliman.com

 **Douglas Elliman**
COMMERCIAL

2500 NESCONSET HIGHWAY | STONY BROOK | NEW YORK

MEDICAL OFFICE CONDO FOR LEASE



Direct: 631.804.2613 | emily.pius@elliman.com



1772 E. JERICHO TPKE. STE 1 A
HUNTINGTON NY 11743
OFFICE: 631.858.2405

WE ARE COMMERCIAL REAL ESTATE

Commercial real estate involves more than just property listings. To get the most effective results, you need to partner with a company that has a full complement of services and an in-depth team of professionals to help with all of your needs. Douglas Elliman's team of commercial real estate experts is committed to unrivaled performance standards when working with tenants, investors, purchasers and owners. We represent all major property types including office, industrial, retail, apartment and land. We treat each other each assignment with commitment and focus, from a single transaction in a local market to national and multi-market assignments. We help negotiate contracts, coordinate construction and provide both property management as well as ongoing advisory service to satisfy your changing real estate needs. Our breadth of market knowledge, unprecedented network and use of innovative technology extend to all types of property transactions.

For information on this property please contact:

Emily Pius

Licensed Real Estate Salesperson
Commercial Specialist

Direct: 631.804.2613 | emily.pius@elliman.com

Jason Merrell

Licensed Real Estate Salesperson
Commercial Specialist

Direct: 631.767.3033 | jason.merrell@elliman.com