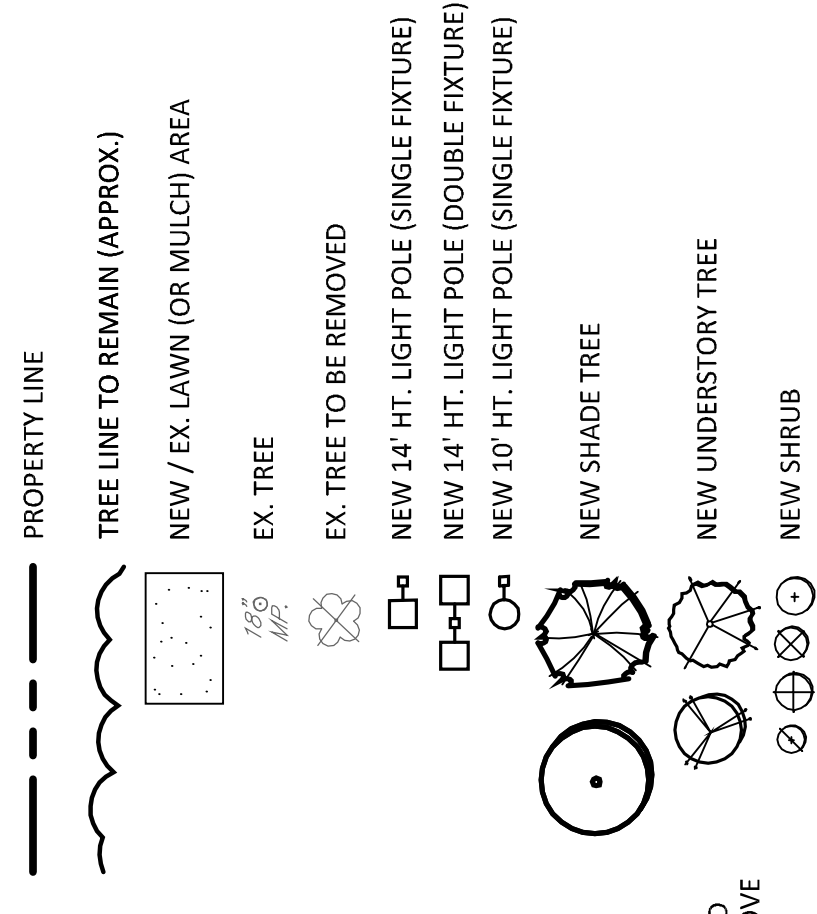


LEGEND

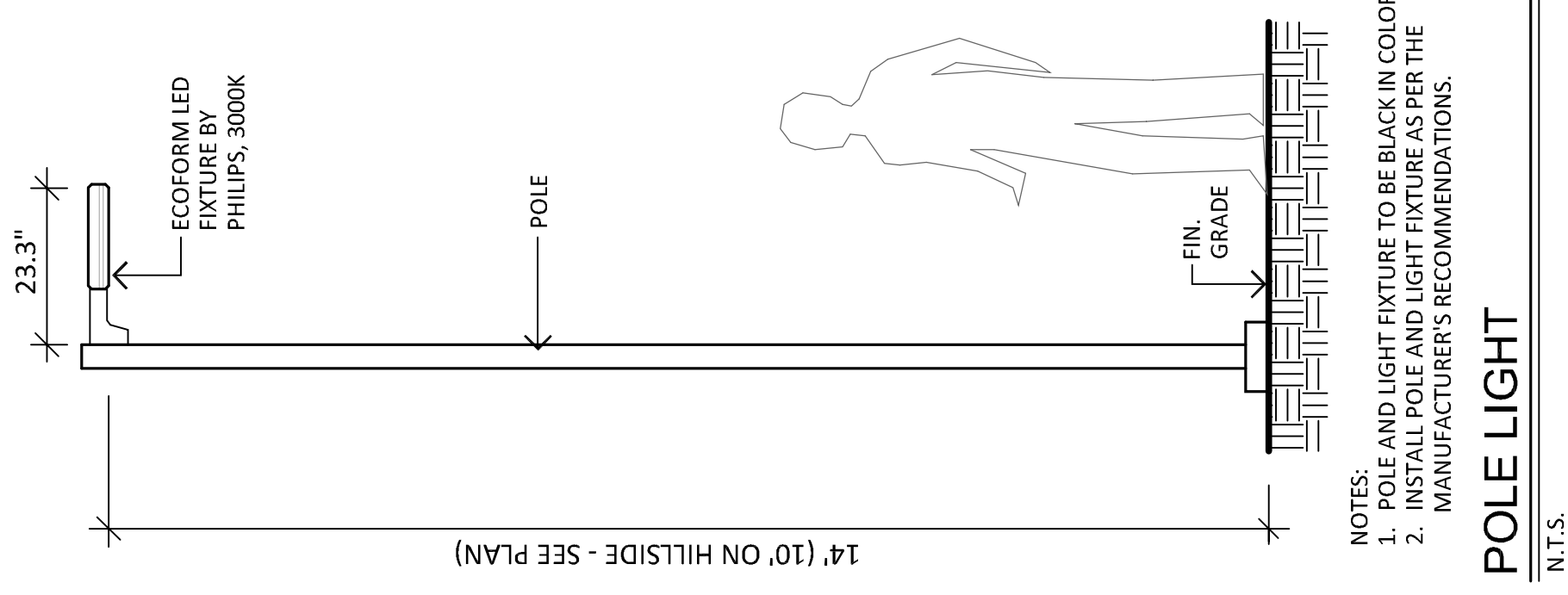


GENERAL NOTES:

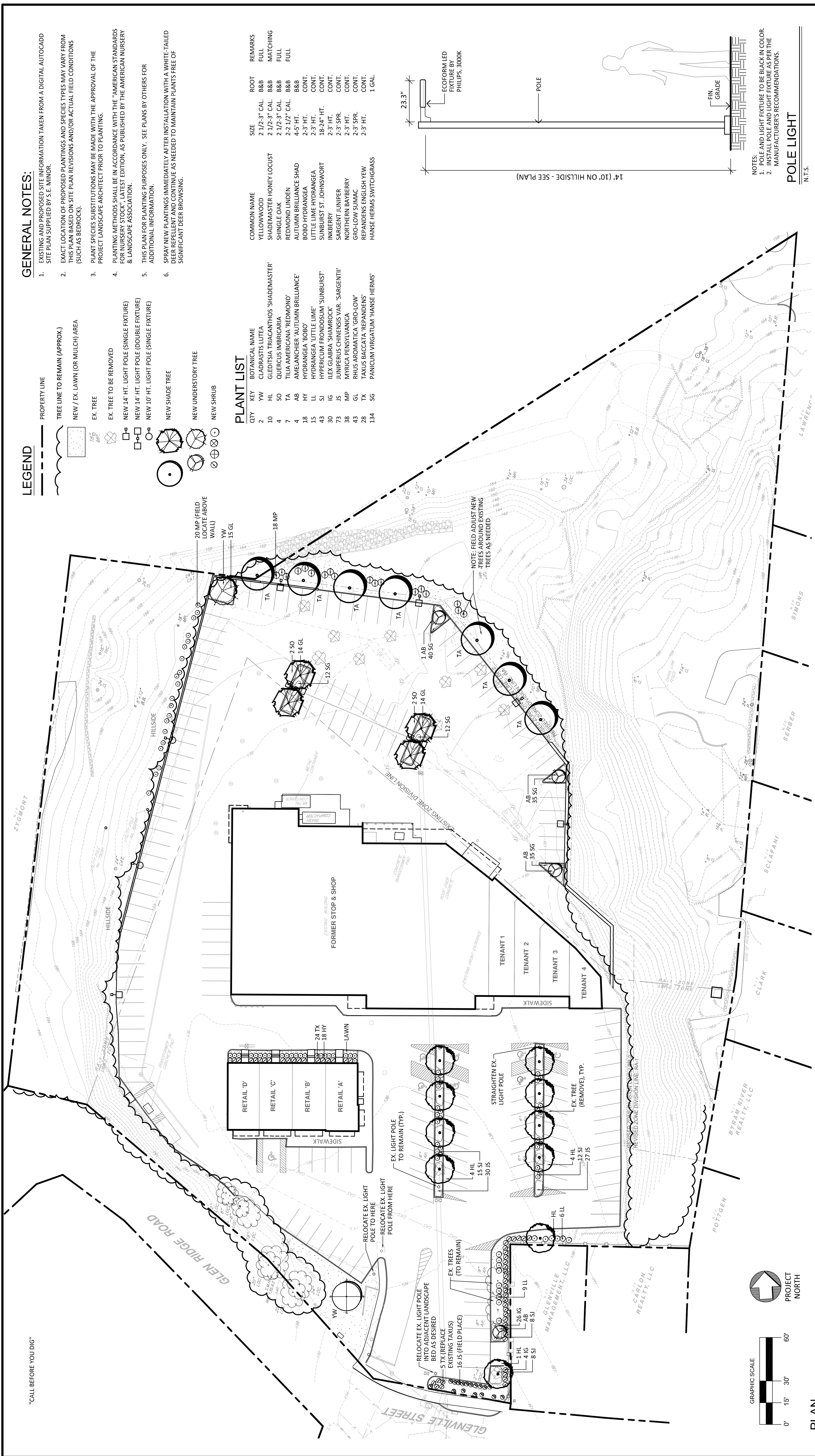
- EXISTING AND PROPOSED SITE INFORMATION TAKEN FROM A DIGITAL AUTOCADD SITE PLAN SUPPLIED BY S.E. MINOR.
- EXACT LOCATION OF PROPOSED PLANTINGS AND SPECIES TYPES MAY VARY FROM THIS PLAN BASED ON SITE PLAN REVISIONS AND/OR ACTUAL FIELD CONDITIONS (SUCH AS BEDROCK).
- PLANT SPECIES SUBSTITUTIONS MAY BE MADE WITH THE APPROVAL OF THE PROJECT LANDSCAPE ARCHITECT PRIOR TO PLANTING.
- PLANTING METHODS SHALL BE IN ACCORDANCE WITH THE "AMERICAN STANDARDS FOR NURSERY STOCK", LATEST EDITION, AS PUBLISHED BY THE AMERICAN NURSERY & LANDSCAPE ASSOCIATION.
- THIS PLAN FOR PLANTING PURPOSES ONLY. SEE PLANS BY OTHERS FOR ADDITIONAL INFORMATION.
- SPRAY NEW PLANTINGS IMMEDIATELY AFTER INSTALLATION WITH A WHITE-TAILED DEER REPELLENT AND CONTINUE AS NEEDED TO MAINTAIN PLANTS FREE OF SIGNIFICANT DEER BROWSING.

PLANT LIST

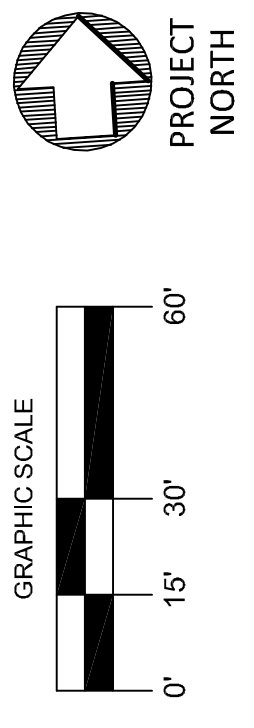
QTY	KEY	BOTANICAL NAME	COMMON NAME	SIZE	ROOT	REMARKS
2	YW	CLADRASTIS LUTEA	YELLOWWOOD	2.1/2-3" CAL.	B&B	FULL
10	HL	GLEDITSIA TRIACANTHOS 'SHADEMASTER'	SHADEMASTER HONEY LOCUST	2.1/2-3" CAL.	B&B	FULL
4	SO	QUERCUS IMBRICARIA	SHINGLE OAK	2.1/2-3" CAL.	B&B	FULL
7	TA	TILIA AMERICANA 'REDMOND'	REDMOND LINDEN	2-2.1/2" CAL.	B&B	FULL
4	AB	AMELANCHIER 'AUTUMN BRILLIANCE'	AUTUMN BRILLIANCE SHAD	4-5' HT.	B&B	CONT.
18	HY	HYDRANGEA 'BOBO'	BOBO HYDRANGEA	2-3' HT.	CONT.	CONT.
15	LL	HYDRANGEA 'LITTLE LIME'	LITTLE LIME HYDRANGEA	2-3' HT.	CONT.	CONT.
43	SJ	HYPERICUM FRONDOSUM 'SUNBURST'	SUNBURST ST. JOHNSWORT	18-24" HT.	CONT.	CONT.
30	IG	ILEX GLABRA 'SHAMROCK'	INKBERRY	2-3' HT.	CONT.	CONT.
73	JS	JUNIPERUS CHINENSIS VAR. 'SARGENTII'	SARGENT JUNIPER	2-3' SPR.	CONT.	CONT.
38	MP	MYRICA PENNSYLVANICA	NORTHERN BAYBERRY	2-3' HT.	CONT.	CONT.
43	GL	RHUS AROMATICA 'GRO-LOW'	GRO-LOW SUMAC	2-3' SPR.	CONT.	CONT.
28	TX	TAXUS BACCATA 'REPANDENS'	REPANDENS ENGLISH YEW	2-3' HT.	CONT.	CONT.
134	SG	PANICUM VIRGATUM 'HANSE HERMS'	HANSE HERMS SWITCHGRASS	1 GAL.		



NOTES:
 1. POLE AND LIGHT FIXTURE TO BE BLACK IN COLOR.
 2. INSTALL POLE AND LIGHT FIXTURE AS PER THE MANUFACTURER'S RECOMMENDATIONS.



"CALL BEFORE YOU DIG"



PLAN
 SCALE: 1" = 30'

LANDSCAPE LIGHTING NOTES:

- SITE LIGHTING INFORMATION AND LIGHTING PLANS PREPARED BY ENVIRONMENTAL LAND SOLUTIONS, LLC ARE DESIGNED FOR GENERAL LANDSCAPE AESTHETIC PURPOSES ONLY. LIGHTING INFORMATION SHOWN ON THIS PLAN SHALL NOT BE USED FOR SECURITY OR SAFETY PURPOSES.
- LOCATION AND TYPE OF LIGHT FIXTURES ARE TYPICAL AND MAY VARY BASED ON ACTUAL FIELD CONDITIONS, SITE AND ARCHITECTURAL PLAN REVISIONS, USE OF EXISTING LIGHTING (IF ANY), NEW BUILDING MOUNTED LIGHTING, AESTHETICS, AND CONSULTATIONS WITH LIGHTING CONSULTANT AND/OR MANUFACTURER.

LANDSCAPE LIGHTING NOTES (CONT.):

- THIS PLAN ASSUMES THAT THE BUILDING WILL HAVE WALL MOUNTED FIXTURES (BY OTHERS) TO LIGHT THE FACADE AND ADJACENT LANDSCAPE AREAS (INCLUDING WALLS AND DOORS).
- INSTALL LIGHT FIXTURES AS RECOMMENDED BY THE MANUFACTURER.
- LIGHT POLES LOCATED WITHIN LANDSCAPE AND PEDESTRIAN AREAS SHALL BE ON A BASE FLUSH WITH GRADE LOCATED A MINIMUM OF 3' FROM THE EDGE OF VEHICLE PAVEMENT IF FEASIBLE.
- INSTALL "TOWN" STYLE LIGHT POLES ONLY IF THEY ARE APPROVED BY THE TOWN TO BE USED IN NEARBY OFFSITE GLENVILLE STREETSCAPE.

LANDSCAPE PLAN

PROJECT: 21 GLENVILLE STREET GREENWICH, CONNECTICUT

DATE: 5.25.23
 SCALE: AS SHOWN
 DRAWING NO.: LP.1

REVISIONS:

NO.	DATE	DESCRIPTION
1	10.9.23	PER TOWN COMMENTS AND REVISED SITE PLAN

ENVIRONMENTAL LAND SOLUTIONS, LLC
 Landscape Architecture and Environmental Planning
 8 KNIGHT STREET, SUITE 203
 NORWALK, CONNECTICUT 06851
 Tel: (203) 855-7879 Fax: (203) 855-7836
 info@elslcn.net www.elslcn.net