

4500 LEEDS OFFICE SPACE



4500 LEEDS AVENUE - NORTH CHARLESTON, SC 29405
1,500 - 26,163 SF AVAILABLE



WORLD TRADE CENTERS
CHARLESTON



CUSHMAN &
WAKEFIELD



PROPERTY OVERVIEW

Situated in the largest office park in the tri-county area, the World Trade Center Charleston (WTCC) at 4500 Leeds Avenue offers economical space with numerous onsite amenities. This prime location provides tenants with easy access to all submarkets via I-526 and is just minutes away from the Charleston International Airport.



Micro-Market with Fresh Food



Full Service On-Site Cafeteria

Full Service Cafeteria On-Site

Micro-Market with Fresh Food

Multiple Conference Rooms Available to All Tenants at No Cost

Ample Parking

Building Signage Available

SPACE AVAILABLE



WEST SIDE AVAILABILITY

FLOOR	SUITE	SF
1	102W	5,417 SF
2	215W	1,026 - 3,294 SF
2	221W	1,500 - 7,571 SF
2	230W	1,933 SF
2	265W	5,395 SF

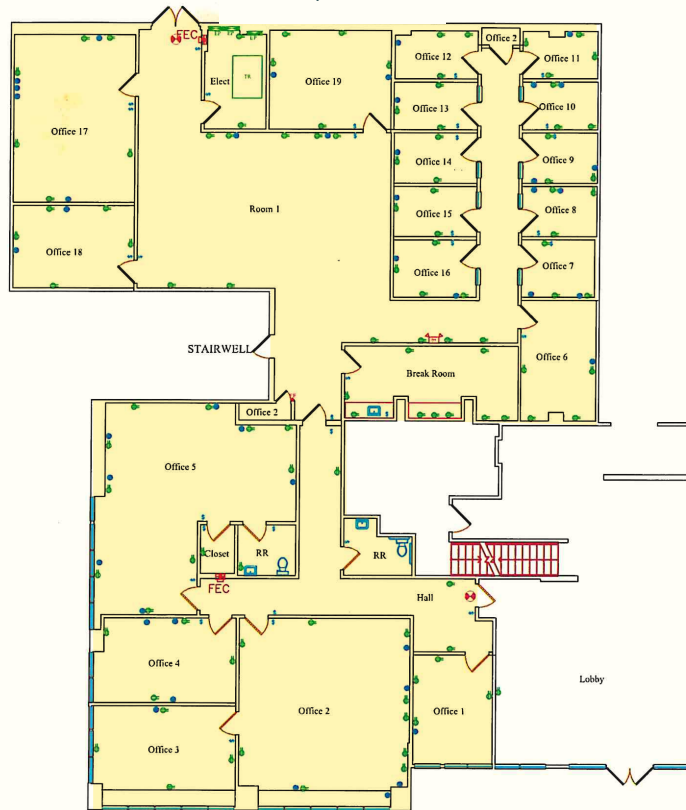
EAST SIDE AVAILABILITY

FLOOR	SUITE	SF
2	202E	7,667 SF
2	203E	18,496 SF

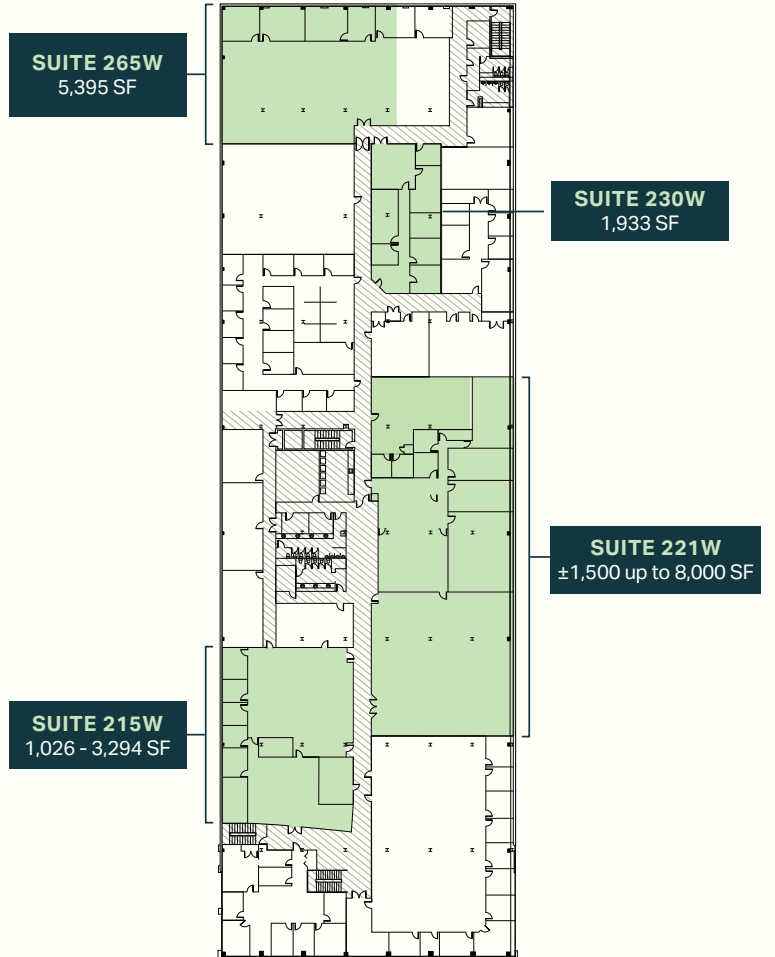
West Side FIRST FLOOR



102W - 5,417 SF



West Side SECOND FLOOR



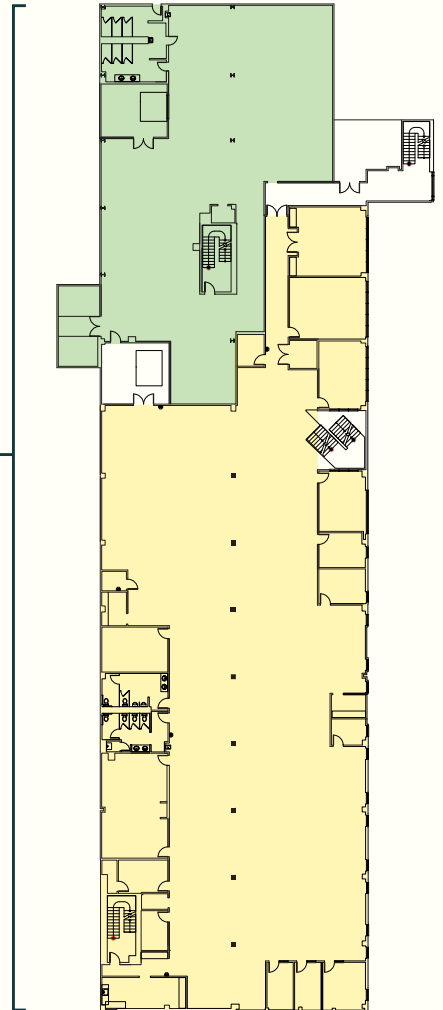
East Side SECOND FLOOR



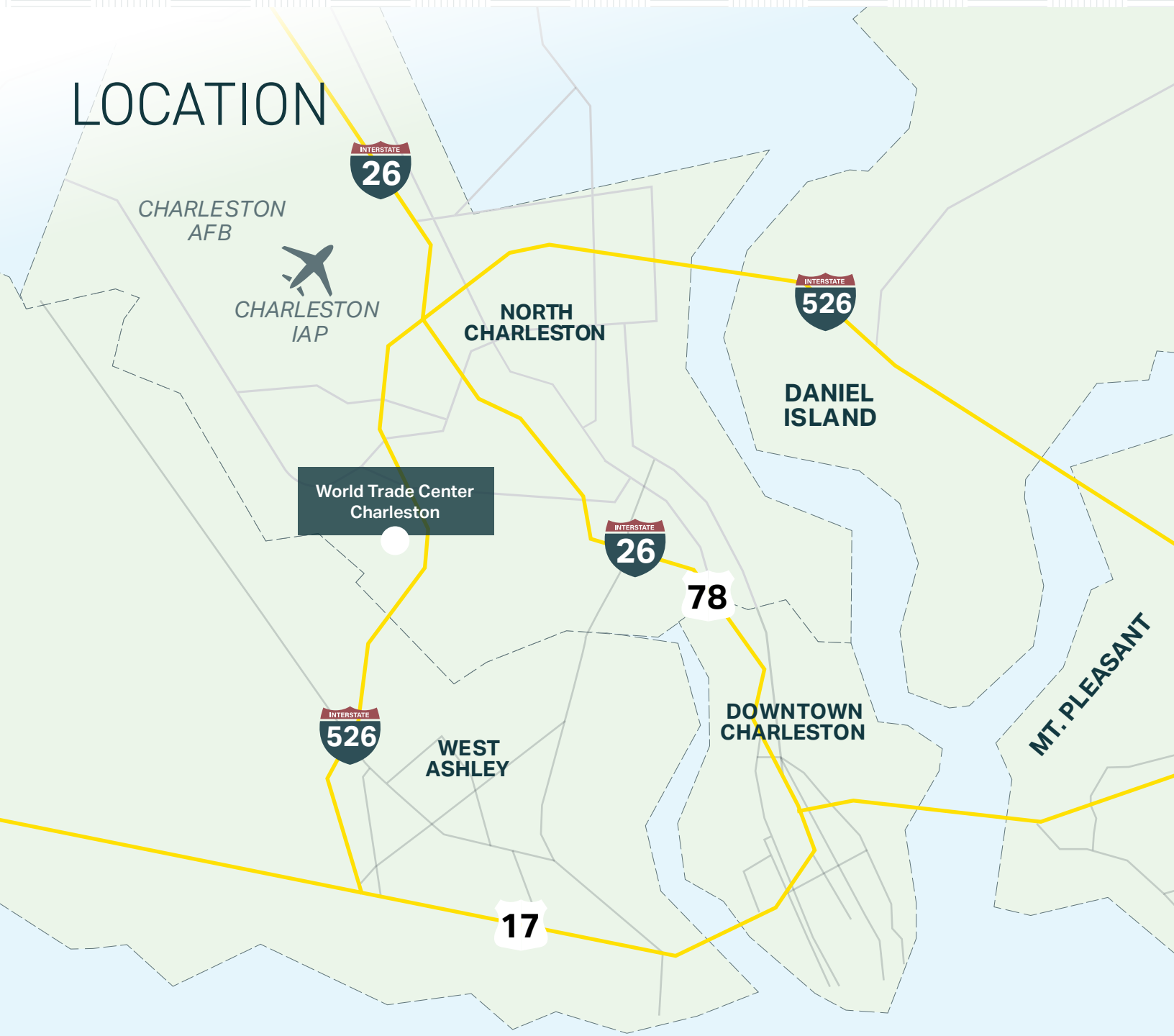
SUITE 202E
7,667 SF

Total Contiguous:
26,163 RSF

SUITE 203E
18,496 SF



LOCATION



CHARLESTON INTERNATIONAL AIRPORT	3.8 MILES
DOWNTOWN CHARLESTON	9 MILES
NAVAL INFORMATION WARFARE CENTER	7.8 MILES
SC PORT - N. CHARLESTON TERMINAL	8.3 MILES
SC PORT - HUGH LEATHERMAN TERMINAL	6.9 MILES
SC PORT - WANDO WELCH TERMINAL	15.9 MILES
SUMMERVILLE, SC	17.9 MILES



4500 LEEDS AVENUE NORTH CHARLESTON, SC 29405

NICK TANANA

Senior Director
843 724 0109
nick.tanana@cushwake.com

BRADY DASHIELL

Senior Associate
843 724 0106
brady.dashiell@cushwake.com



**WORLD TRADE CENTERS
CHARLESTON**



**CUSHMAN &
WAKEFIELD**

©2025 Cushman & Wakefield. All rights reserved. The information contained in this communication is strictly confidential. This information has been obtained from sources believed to be reliable but has not been verified. NO WARRANTY OR REPRESENTATION, EXPRESS OR IMPLIED, IS MADE AS TO THE CONDITION OF THE PROPERTY (OR PROPERTIES) REFERENCED HEREIN OR AS TO THE ACCURACY OR COMPLETENESS OF THE INFORMATION CONTAINED HEREIN, AND SAME IS SUBMITTED SUBJECT TO ERRORS, OMISSIONS, CHANGE OF PRICE, RENTAL OR OTHER CONDITIONS, WITHDRAWAL WITHOUT NOTICE, AND TO ANY SPECIAL LISTING CONDITIONS IMPOSED BY THE PROPERTY OWNER(S). ANY PROJECTIONS, OPINIONS OR ESTIMATES ARE SUBJECT TO UNCERTAINTY AND DO NOT SIGNIFY CURRENT OR FUTURE PROPERTY PERFORMANCE.