

150 SOUTH MOUNTAIN WAY DRIVE

FOR LEASE: TIA AVAILABLE



PROPERTY DETAILS

150 South Mountain Way Drive, Orem, Utah 84058

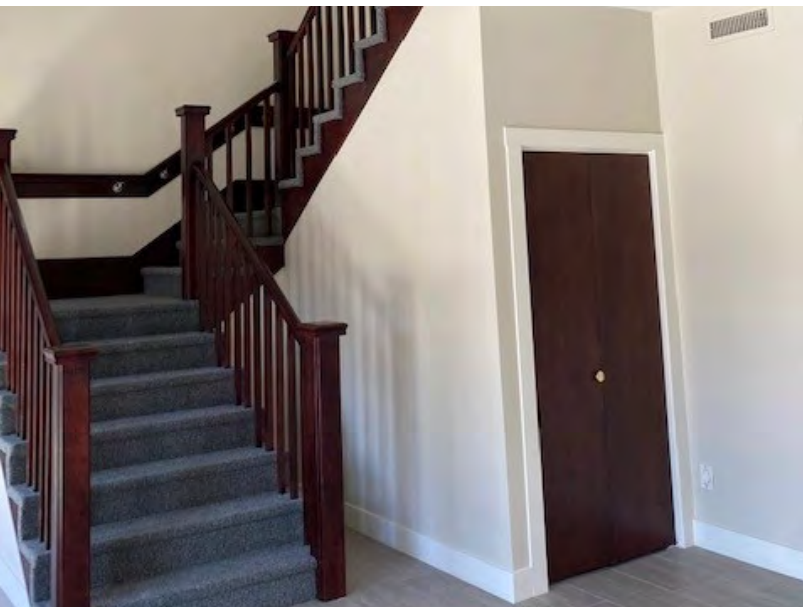
- Suite 201: 1,472 RSF
- Suite 202: 4,129 RSF
- \$12/SF Full Service
- New Flooring, Lighting, and Landscaping
- Quick Access off of I-15 from Center Street Orem
- Executive Offices Now Available Starting at \$400 Full Service



CODY BLACK
cblack@newmarkmw.com
direct 385.233.9141
[View Profile](#)

NIC WOODS
nwoods@newmarkmw.com
direct 801.719.4309
[View Profile](#)

**FULL SERVICE
COMMERCIAL REAL ESTATE**
312 East South Temple
Salt Lake City, Utah 84111
Office 801.456.8800
www.newmarkmw.com



CODY BLACK
cblack@newmarkmw.com
direct 385.233.9141
[View Profile](#)

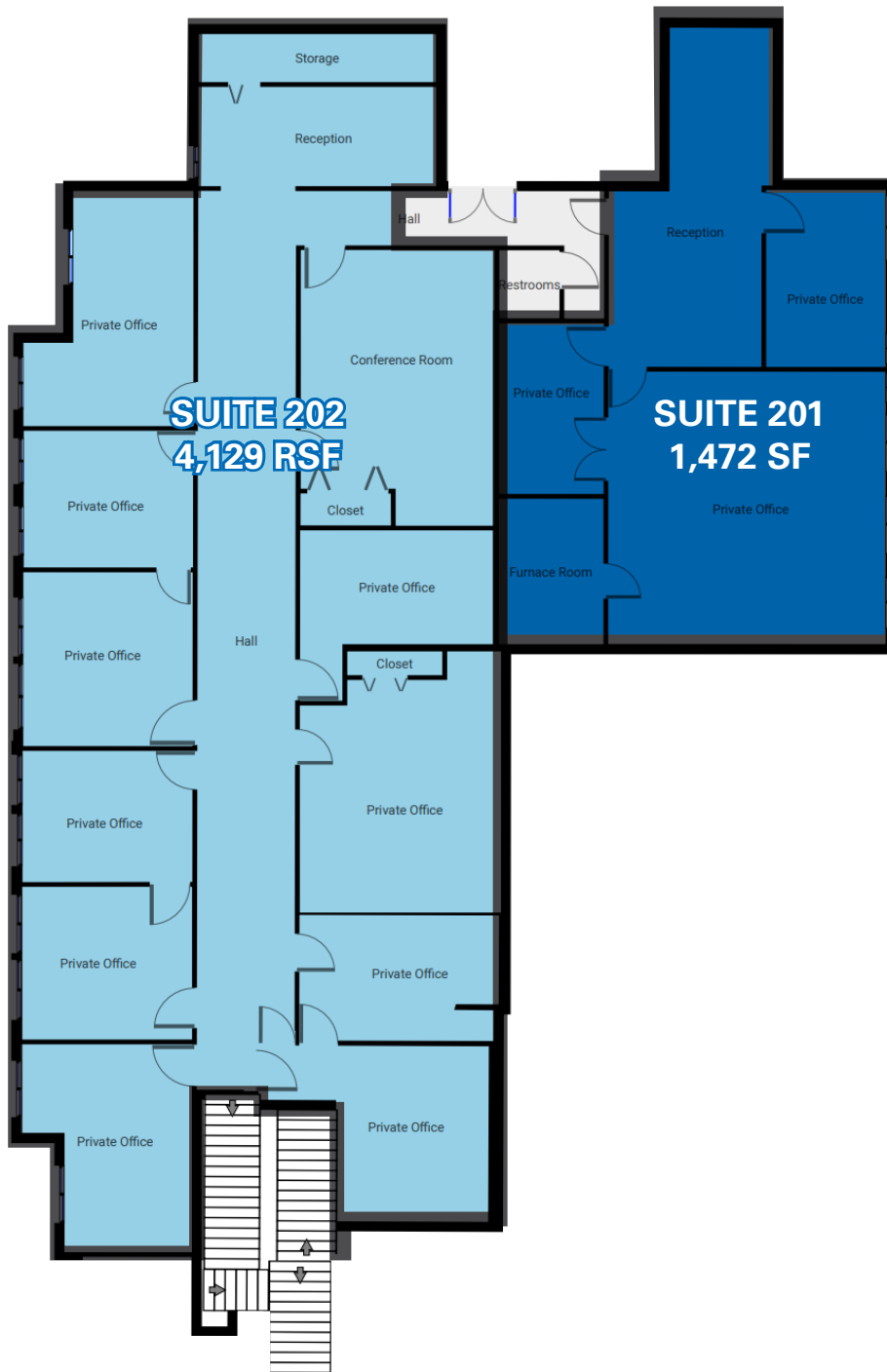
NIC WOODS
nwoods@newmarkmw.com
direct 801.719.4309
[View Profile](#)

**FULL SERVICE
COMMERCIAL REAL ESTATE**
312 East South Temple
Salt Lake City, Utah 84111
Office 801.456.8800
www.newmarkmw.com

150 SOUTH MOUNTAIN WAY DRIVE

SECOND FLOOR

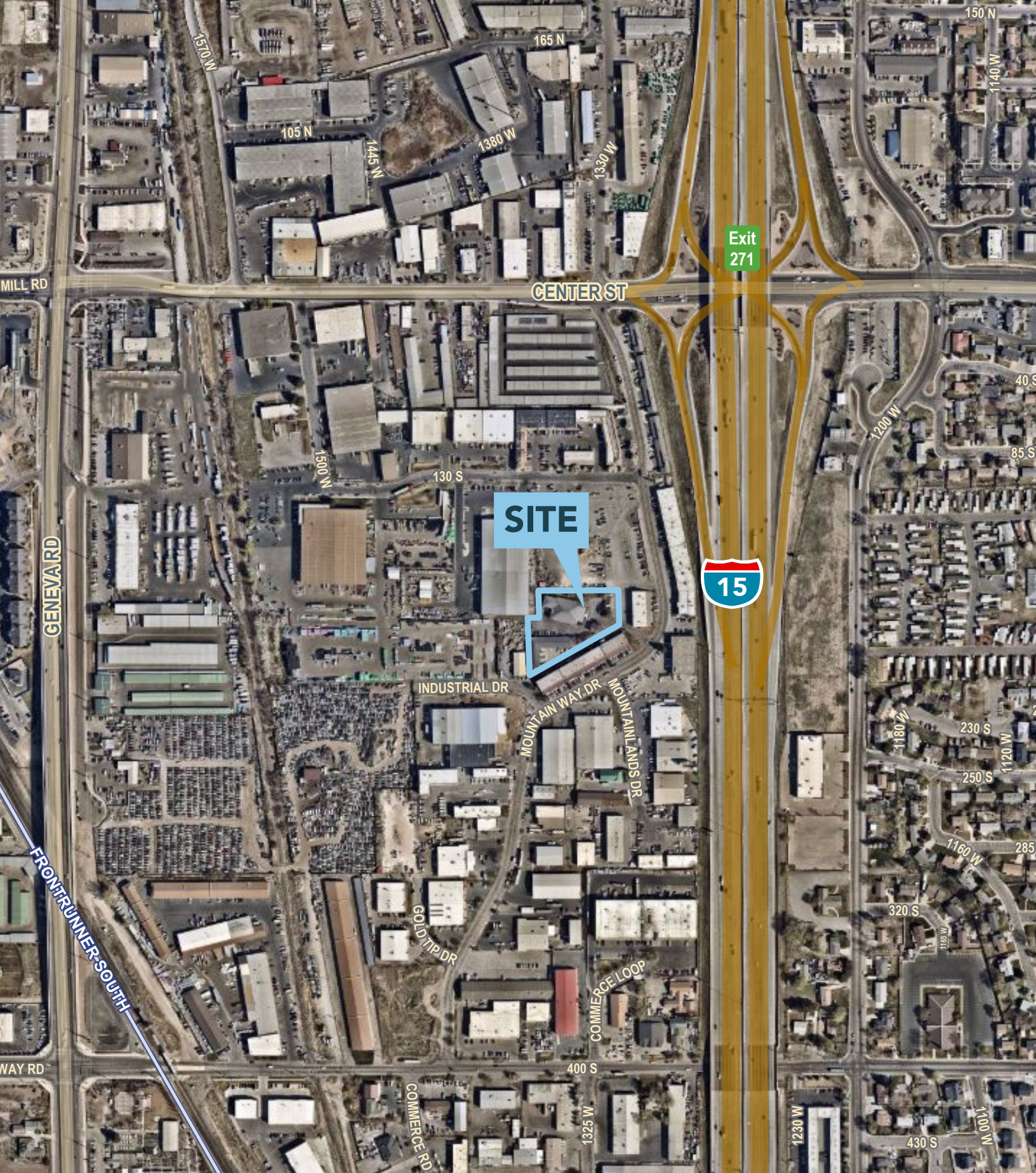
FLOOR PLAN



CODY BLACK
cblack@newmarkmw.com
direct 385.233.9141
[View Profile](#)

NIC WOODS
nwoods@newmarkmw.com
direct 801.719.4309
[View Profile](#)

**FULL SERVICE
COMMERCIAL REAL ESTATE**
312 East South Temple
Salt Lake City, Utah 84111
Office 801.456.8800
www.newmarkmw.com



CODY BLACK
cblack@newmarkmw.com
direct 385.233.9141
[View Profile](#)

NIC WOODS
nwoods@newmarkmw.com
direct 801.719.4309
[View Profile](#)

**FULL SERVICE
COMMERCIAL REAL ESTATE**
312 East South Temple
Salt Lake City, Utah 84111
Office 801.456.8800
www.newmarkmw.com