

ARAPAHOE CORPORATE PARK I

BUILD-TO-SUIT & SPEC SUITE OPTIONS

FULLY UPGRADED EXTERIOR, LOBBY,
COMMON AREAS, AND RESTROOMS



12503

E. EUCLID DRIVE
SECOND FLOOR

CENTENNIAL, CO 80111



Arapahoe Corporate Park I has been completely renovated, making it one of the most upgraded office buildings in the area. The building offers Class A type finishes throughout at a value lease rate and features an extensive glass line, balconies, high ceilings, and abundant parking. Numerous restaurants, parks and retail amenities are nearby.



JEREMY REEVES
+1 303 283 1375
jeremy.reeves@colliers.com

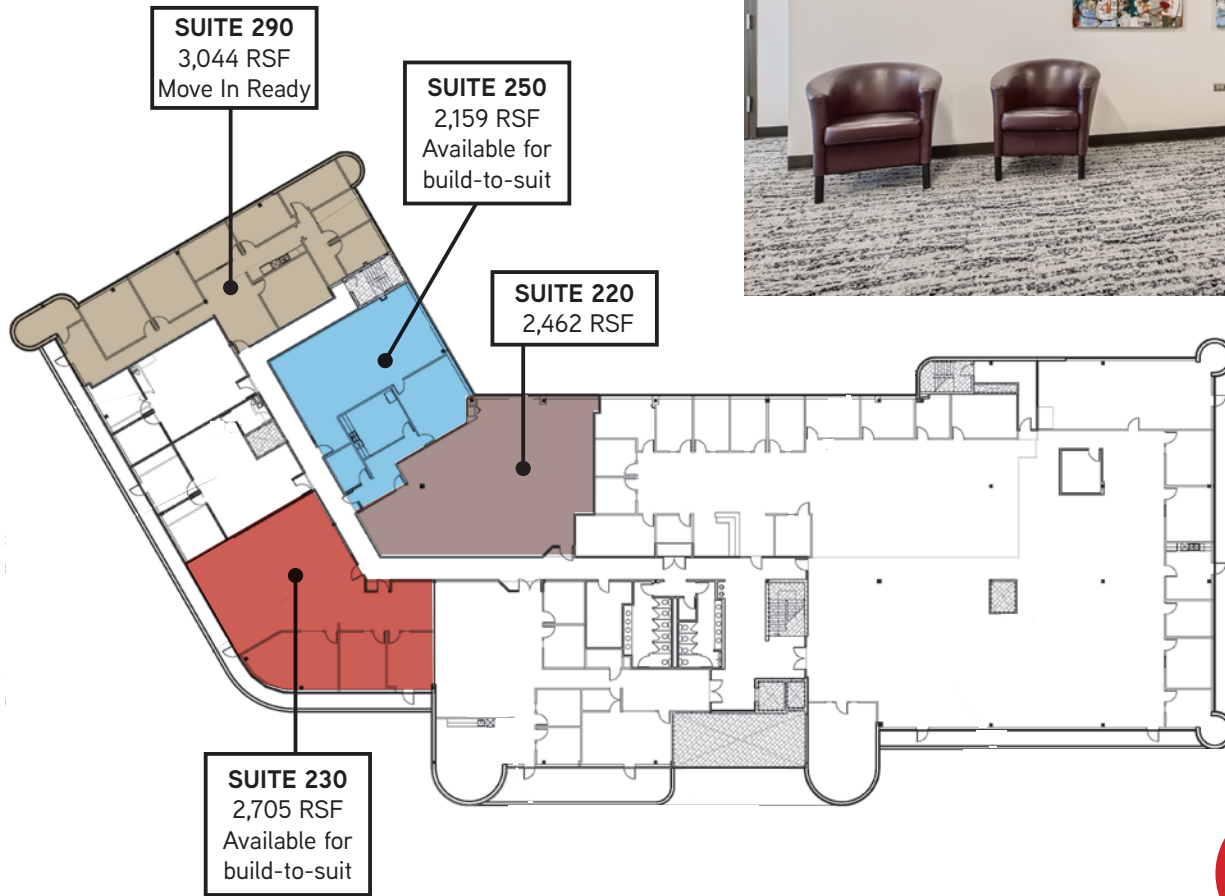
CODY SHEESLEY
+1 303 309 3520
cody.sheesley@colliers.com

T.J. SMITH, SIOR
+1 303 283 4576
tj.smith@colliers.com



12503 E. EUCLID DRIVE • SECOND FLOOR | CENTENNIAL, CO 80111

AVAILABLE SUITES



COLLIERS DENVER
4643 S. Ulster Street | Suite 1000 | Denver, CO 80237
+1 303 745 5800 fax +1 303 745 5888 | colliers.com/denver

BROKER DISCLOSURE



This communication has been prepared by Colliers Denver for advertising and/or general information only. Colliers Denver makes no guarantees, representations or warranties of any kind, expressed or implied, regarding the information including, but not limited to, warranties of content, accuracy and reliability. Any interested party should undertake their own inquiries as to the accuracy of the information. Colliers Denver excludes unequivocally all inferred or implied terms, conditions and warranties arising out of this document and excludes all liability for loss and damages arising there from. This publication is the copyrighted property of Colliers Denver and/or its licensor(s). © 2022. All rights reserved. This communication is not intended to cause or induce breach of an existing listing agreement.