

FOR LEASE



CROSSROADS PLAZA RETAIL SPACE FOR LEASE

130 Caldwell Blvd, Nampa, ID 83651

AVAILABLE: 11,200 SF

Asking Rate: Contact Agent

Lease Type: NNN

PROPERTY HIGHLIGHTS

- Great Signalized Intersection in Nampa
- Available May, 1, 2025
- Excellent Exposure (25,000 vpd)
- Contact Agent for Showing Instructions
- Close Proximity to both Fred Meyer and I84



AVAILABLE SPACE
11,200 SF



LEASE TERM
Flexible



ASKING
Contact Agent



INTERMOUNTAIN
COMMERCIAL REAL ESTATE

DARIN BURRELL
darin@icreboise.com
(208) 286-2260 office
(208) 860-0332 cell

SETH MCCORMACK
seth@icreboise.com
(208) 286-2272 office
(208) 918-1030 cell



EXECUTIVE SUMMARY

Available SF: **11,200 SF**

VPD: **≈25,000**

Market: **Nampa**

Lease Rate: **Contact Agent**

Cross Streets: **Caldwell Blvd & Northside Blvd**

Lease Type: **NNN**

Location

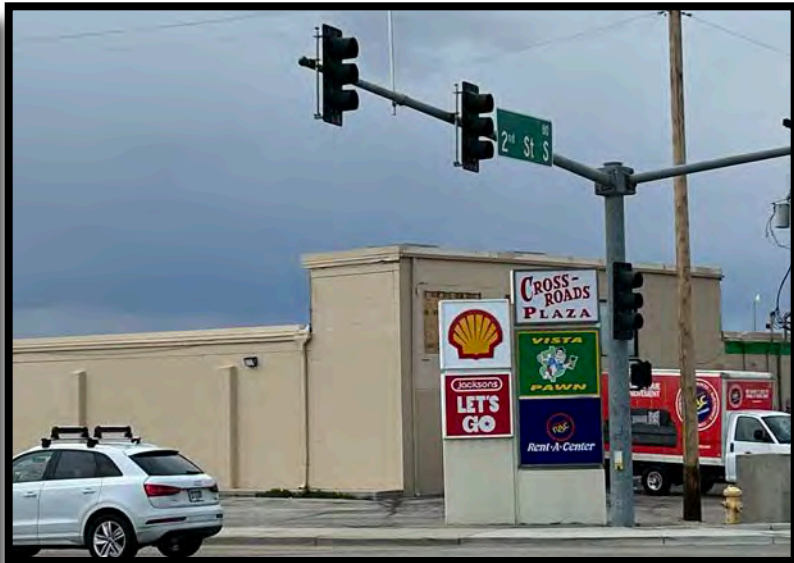
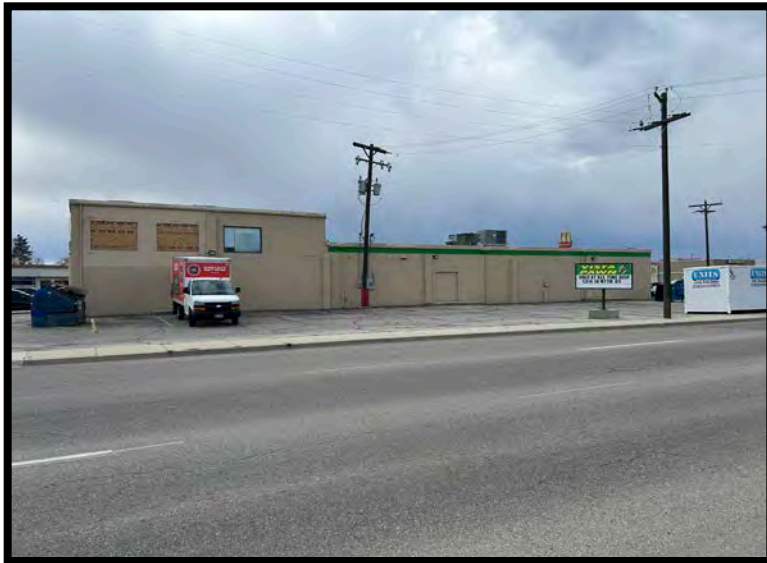
Ideally situated in close proximity to Fred Meyer, I84 and many retail shops, Crossroads Plaza Retail Space offers great exposure and convenient access for any retail business to thrive.



INTERMOUNTAIN
COMMERCIAL REAL ESTATE

DARIN BURRELL
darin@icreboise.com
(208) 286-2260 office
(208) 860-0332 cell

SETH MCCORMACK
seth@icreboise.com
(208) 286-2272 office
(208) 918-1030 cell

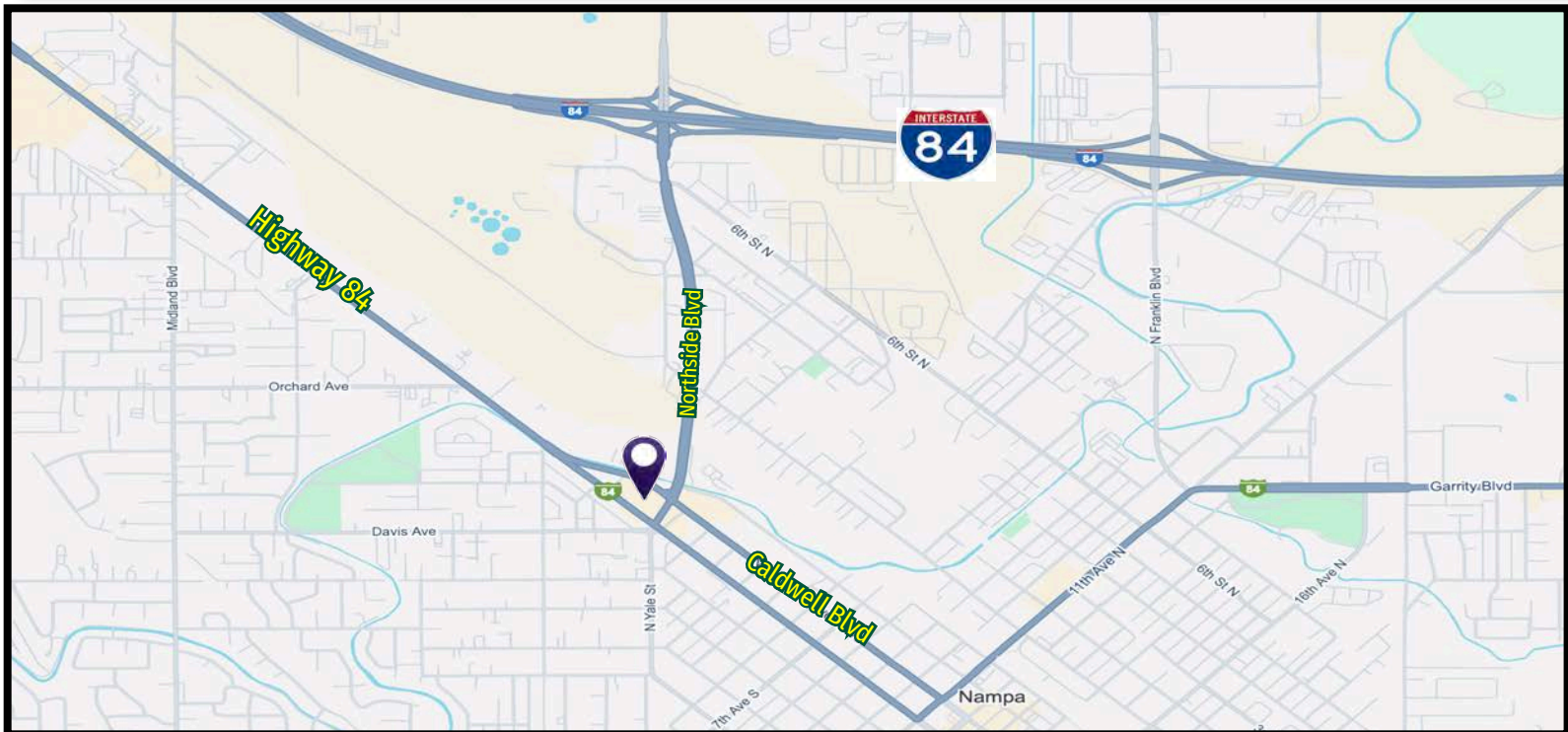


INTERMOUNTAIN
COMMERCIAL REAL ESTATE

DARIN BURRELL
darin@icreboise.com
(208) 286-2260 office
(208) 860-0332 cell

SETH MCCORMACK
seth@icreboise.com
(208) 286-2272 office
(208) 918-1030 cell

CROSSROADS PLAZA RETAIL SPACE | 130 CALDWELL BLVD, NAMPA, ID 83651



INTERMOUNTAIN
COMMERCIAL REAL ESTATE

DARIN BURRELL
darin@icreboise.com
(208) 286-2260 office
(208) 860-0332 cell

SETH MCCORMACK
seth@icreboise.com
(208) 286-2272 office
(208) 918-1030 cell

www.icreboise.com | 380 E. Parkcenter Boulevard Suite 290, Boise, ID 83706 | (208) 429-8603 office

The information has been obtained from sources believed reliable and, while we do not doubt its reliability, ICRE has not verified it and makes no guarantees, warranties or representations, expressed or implied, as to its accuracy. All interested parties should conduct their own independent investigation and rely on those results.