

OFFICE FOR LEASE



GC

REALTY & DEVELOPMENT, LLC.



3,420 SF Available for Immediate Occupancy

400 W Lake St #310-318, Roselle, IL 60172

Ian Pattison: (847) 650-3124 /// ian@gcrealtyinc.com

GC Realty & Development LLC 215 E. Irving Park Rd. Roselle IL 60172

All information deemed accurate but not guaranteed.

Lease Price: \$14/SF MG



SUITE INFORMATION

- ◆ **3,420 Total Square Feet Divisible to 2,250 SF or 1,170 SF Units**
- ◆ **Currently Set Up with (1) Private Office, Conference Room, and IT Room**
- ◆ **Mostly Open Floorplan Allows for Many Flexible Buildout Possibilities**
- ◆ **(3) Private Bathrooms**
- ◆ **Additional Sink for Coffee Bar**
- ◆ **Outstanding Window Line Provides Abundant Natural Light**

Ian Pattison

(847) 650-3124

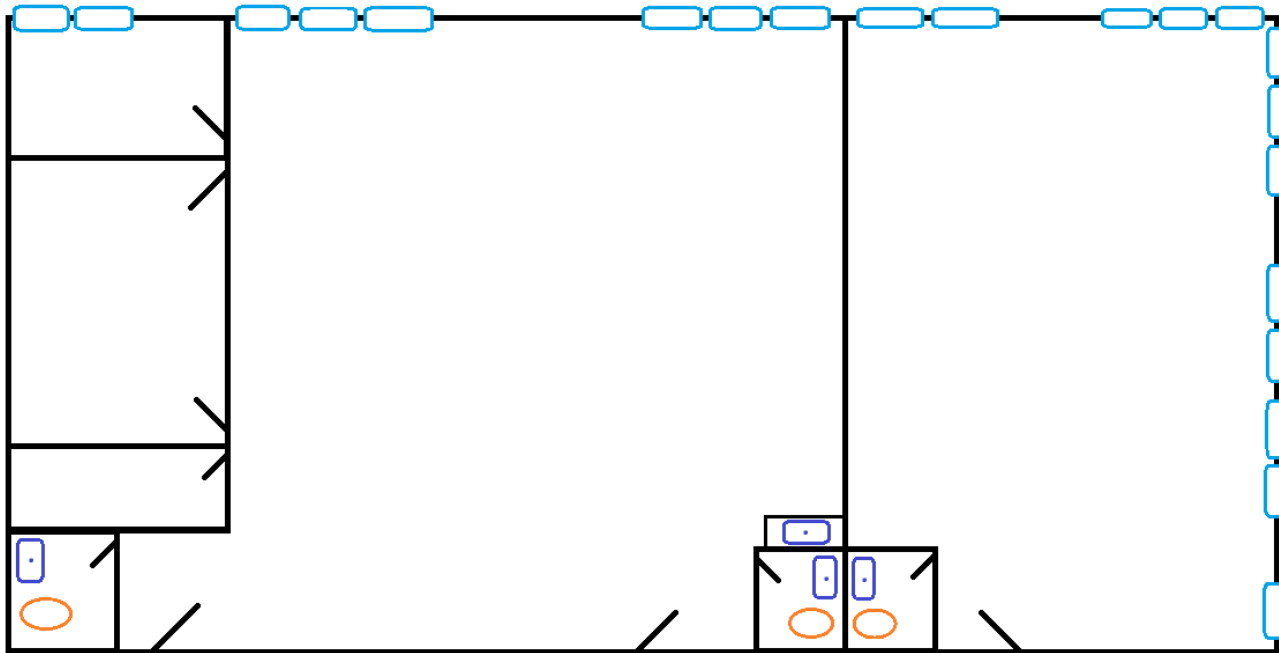
ian@gcrealtyinc.com

gcrealtycommercial.com

GC Realty & Development LLC

215 E. Irving Park Rd. Roselle IL 60172

Lease Price: \$14/SF MG



Ian Pattison

(847) 650-3124

ian@gcrealtyinc.com

gcrealtycommercial.com

GC Realty & Development LLC

215 E. Irving Park Rd. Roselle IL 60172