

For Lease: Retail / Office / Restaurant

SOUTHLAND PLAZA

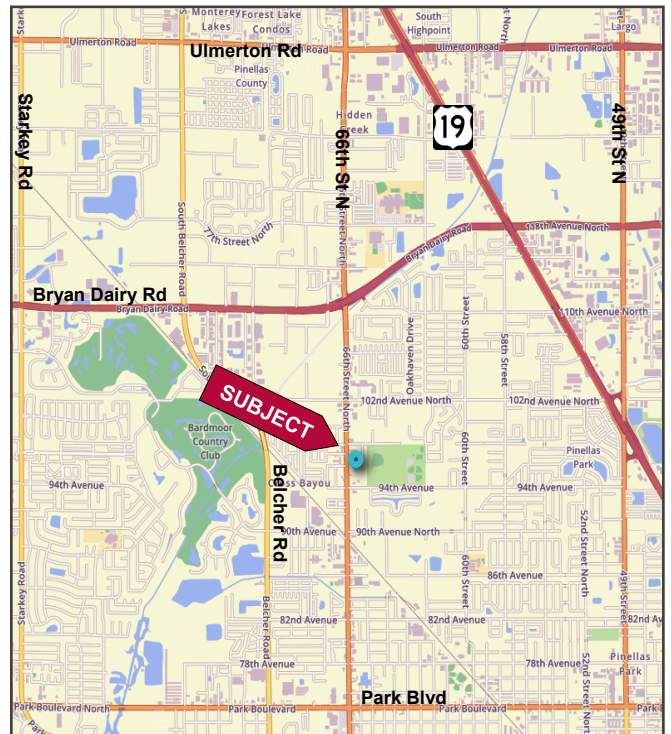
9701 66TH St. N., Pinellas Park, FL 33782



FEATURES

- ❖ End Cap and inline space - 720 SF - LAST TWO UNITS !
- ❖ Highly Visible Center located on busy 66th St. N. between Bryan Dairy Rd. and Park Blvd.
- ❖ Excellent Tenant Mix - including State Farm, Mexican Restaurant, Barber Shop, Coin Shop, Route 66 Diner and more!
- ❖ JUST OPENED: Tiki Tim's Tu American Restaurant / Bar
- ❖ Resurfaced parking lot and upgraded Landscaping completed
- ❖ New Pylon Sign installed and Exterior Painting in progress
- ❖ Leasing at \$16.00 - \$24.00/SF NNN
- ❖ 2026 pass through expenses: \$7.70/SF

LOCATION MAP



2025 Demographics			
	1-mile	3-mile	5-mile
Total Population	10,076	97,291	272,024
Total Households	4,232	42,836	125,542
Average HH Income	\$97,252	\$95,001	\$92,706

Elliott M. Ross, CCIM
 O: 813.755.6700
 C: 727.639.3800
 elliotross@rossrealty.com

Chris Shryock
 O: 813.755.6700
 C: 727.412.5166
 chris@rossrealty.com

ROSS REALTY GROUP, INC.
 Westshore Square
 4600 W. Cypress St., Suite 525
 Tampa, FL 33607

SOUTHLAND PLAZA

9701 66th St. N., Pinellas Park, FL 33782



Exterior Painting
- in progress

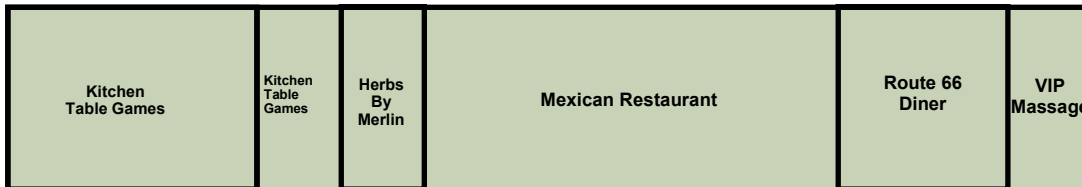
Upgraded Landscap-
ing - completed

New Pylon Signage



SITE PLAN

Parking



Parking

Unit	SF	Date Available
9701	720	NOW
9743	720	NOW

Parking

Parking



Former Tattoo Shop

66TH STREET NORTH

Any information given herein is obtained from sources considered reliable. However, we are not responsible for misstatement of facts, errors, omissions, prior sale, withdrawal from market, modification of mortgage commitment, terms and considerations, or change in price without notice. The information supplied herein is for informational purposes only and shall not contain a warranty or assurance that said information is correct. Any person intending to rely upon the information supplied herein should verify said information independently.