



223 E. CHATHAM ST.

CARY, NC 27511

**FOR
LEASE**

**1,300 SF
OFFICE SPACE
AVAILABLE
NOW!**

LISTING BROKERS:

AMY E. CARROLL

919.227.5518 DIRECT | 919.606.8992 MOBILE

ACARROLL@TRADEMARKPROPERTIES.COM

KHARMIKA ALSTON

919.645.1431 DIRECT | 919.672.4905 MOBILE

KALSTON@TRADEMARKPROPERTIES.COM



**TRADEMARK
PROPERTIES**

**1001 WADE AVENUE SUITE 300, RALEIGH, NC 27605
TRADEMARKPROPERTIES.COM | 919-782-5552**

223 CHATHAM DR
CARY, NC 27511



PROPERTY HIGHLIGHTS



- » 1,300 SF Office Space
- » Four offices, large break room and workroom area
- » 3-5 Year Lease Term
- » 5 Parking Spots Available
- » Located in Downtown Cary
- » 28 Restaurants in Walking Distance
- » Seven-acre Downtown Park to Open in November
- » Easy Access to I-40



LEASE RATE:
\$24.00/SF, NNN

AMY E. CARROLL
919.227.5518 DIRECT | 919.606.8992 MOBILE
ACARROLL@TRADEMARKPROPERTIES.COM

KHARMIKA ALSTON
919.645.1431 DIRECT | 919.672.4905 MOBILE
KALSTON@TRADEMARKPROPERTIES.COM

**223 CHATHAM DR
CARY, NC 27511**



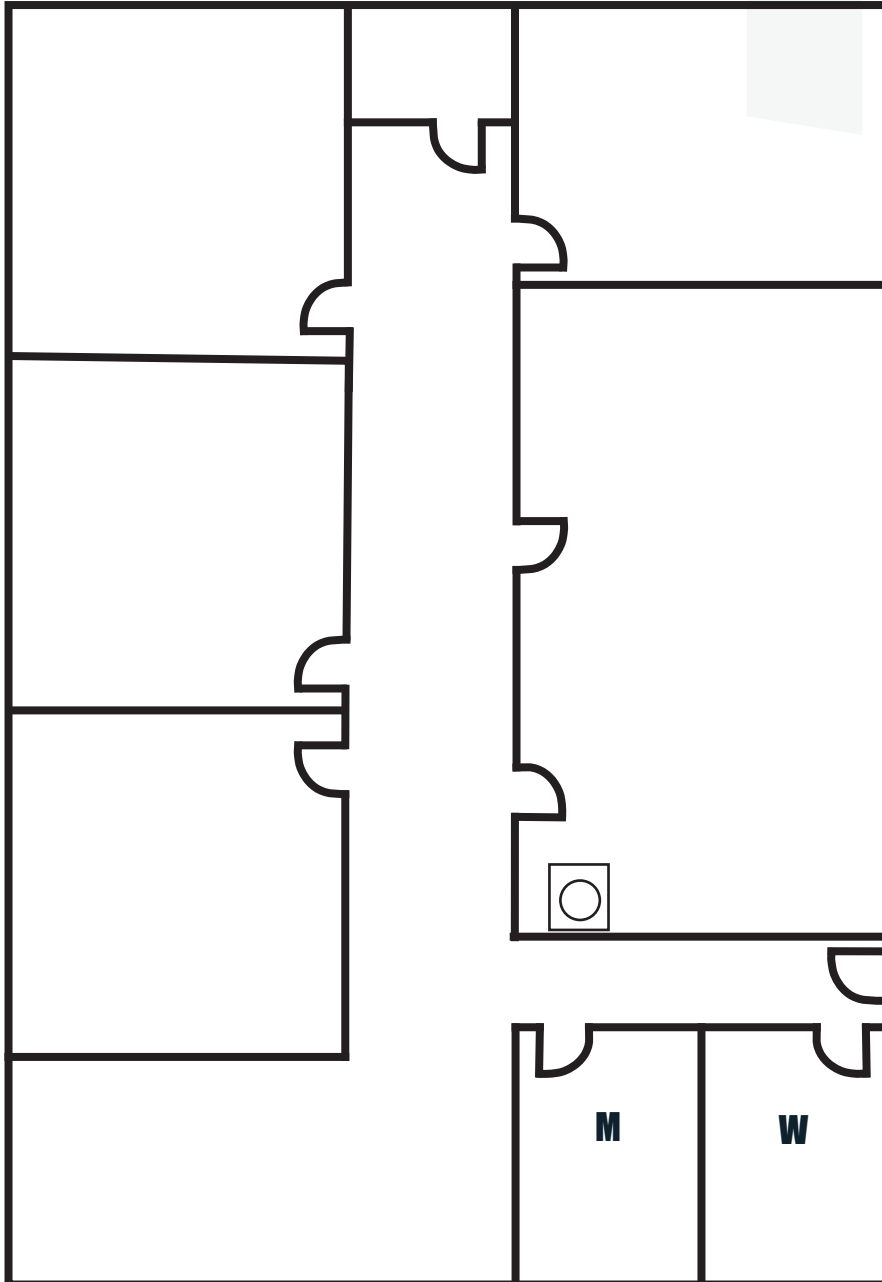
AMY E. CARROLL
919.227.5518 DIRECT | 919.606.8992 MOBILE
ACARROLL@TRADEMARKPROPERTIES.COM

KHARMIKA ALSTON
919.645.1431 DIRECT | 919.672.4905 MOBILE
KALSTON@TRADEMARKPROPERTIES.COM

223 CHATHAM DR
CARY, NC 27511



FLOOR PLAN



AMY E. CARROLL
919.227.5518 DIRECT | 919.606.8992 MOBILE
ACARROLL@TRADEMARKPROPERTIES.COM

KHARMIKA ALSTON
919.645.1431 DIRECT | 919.672.4905 MOBILE
KALSTON@TRADEMARKPROPERTIES.COM

223 CHATHAM DR
CARY, NC 27511



RETAIL MAP



AMY E. CARROLL
919.227.5518 DIRECT | 919.606.8992 MOBILE
ACARROLL@TRADEMARKPROPERTIES.COM

KHARMIKA ALSTON
919.645.1431 DIRECT | 919.672.4905 MOBILE
KALSTON@TRADEMARKPROPERTIES.COM

LISTING BROKERS:

AMY E. CARROLL

919.227.5518 DIRECT | 919.606.8992 MOBILE
ACARROLL@TRADEMARKPROPERTIES.COM

KHARMIKA ALSTON

919.645.1431 DIRECT | 919.672.4905 MOBILE
KALSTON@TRADEMARKPROPERTIES.COM



**TRADEMARK
PROPERTIES**

THIS IS OUR TRADEMARK

THE INFORMATION CONTAINED HEREIN WAS OBTAINED FROM SOURCES BELIEVED RELIABLE; HOWEVER, TRADEMARK PROPERTIES MAKES NO GUARANTEES, WARRANTIES, OR REPRESENTATIONS AS TO THE COMPLETENESS OR ACCURACY THEREOF. THE PRESENTATION OF THIS PROPERTY IS SUBMITTED SUBJECT TO ERRORS, OMISSIONS, CHANGES OF PRICE OR CONDITIONS PRIOR TO SALE OR LEASE, OR WITHDRAWAL WITHOUT NOTICE.