

Fleetwood Business Park

3275-3285 Veterans Memorial Highway
Ronkonkoma, NY



AVISON
YOUNG

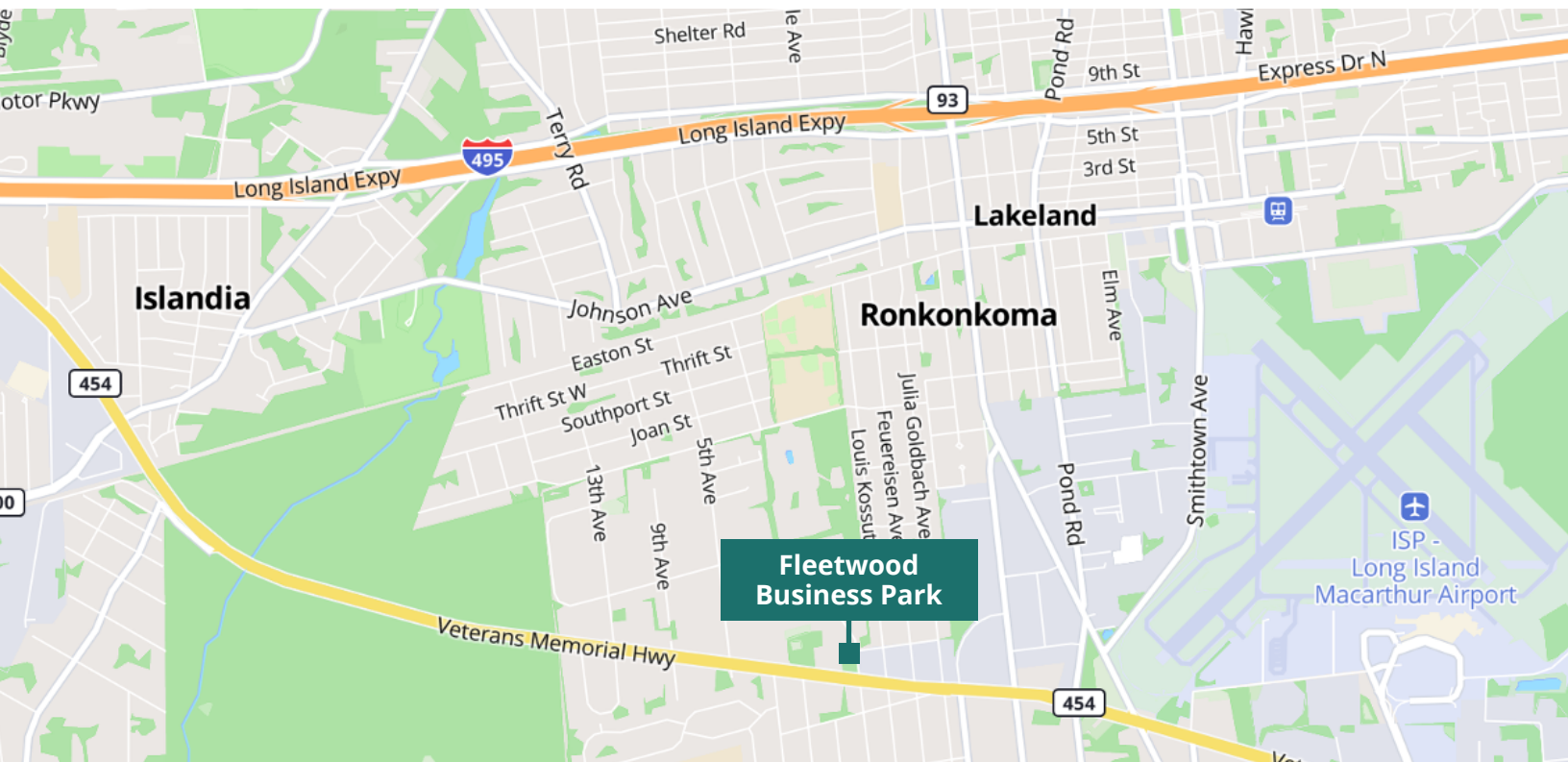
Fleetwood Business Park

3275-3285 Veterans Memorial Highway

Situated along highly-trafficked Veterans Memorial Highway, Fleetwood's 5-building business park offers a professional setting in a prime, accessible location. Recent capital improvements, direct highway frontage, and close proximity to transit, retail, and amenities make it an appealing choice for a wide range of business needs.

Property Highlights

- Various capital improvements including parking lot, HVAC, lighting, signage, landscaping and fencing
- Autonomous suite entrances
- Separate HVAC systems
- Over 5 cars per 1,000 sf
- Excellent location directly on highly-trafficked Veterans Memorial Highway
- Close proximity to nearby transit including MacArthur Airport, the Long Island Expressway and LIRR's Ronkonkoma station
- Convenient access to restaurants, banking, hotels and shopping



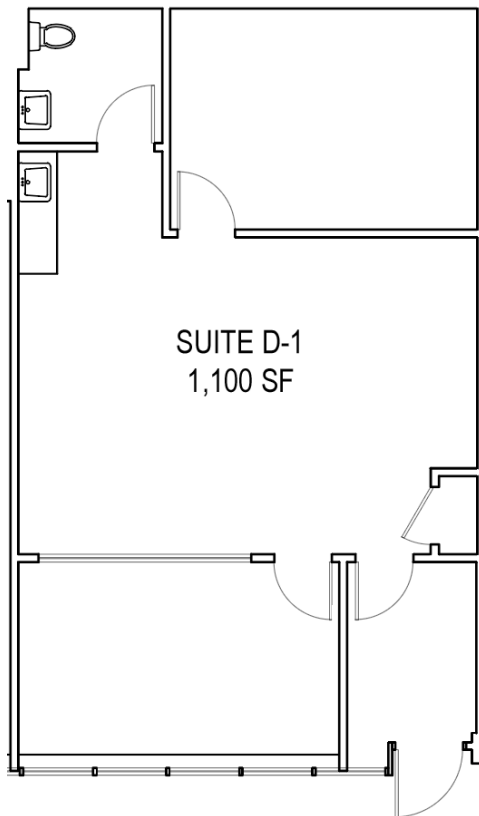
Available Space

3277 Veterans Memorial Highway

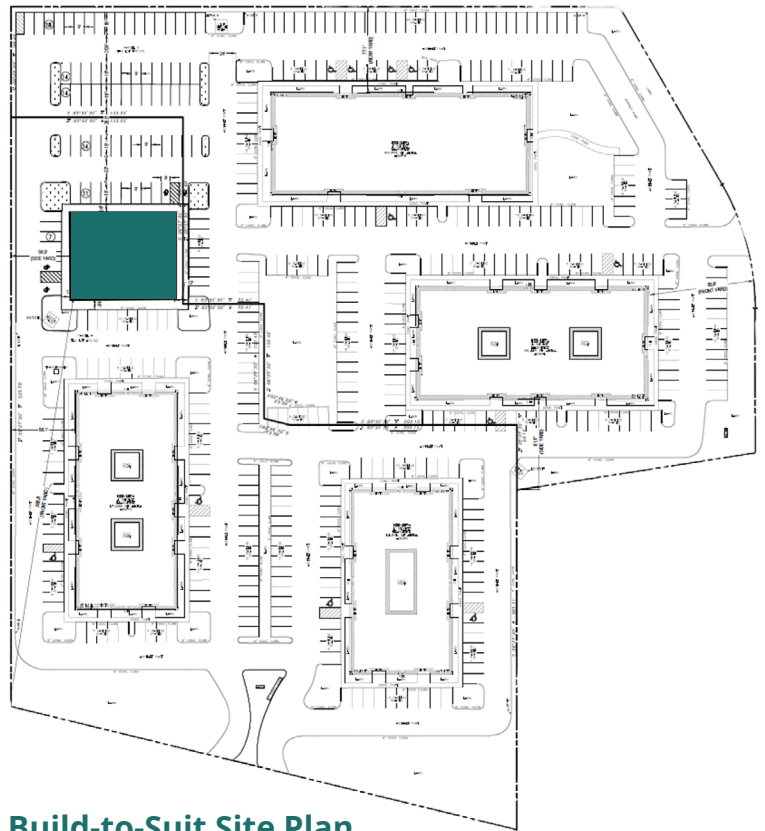
- Build-to-suit (including medical use)
- Up to 20,000 sf
- Rate upon request

3279 Veterans Memorial Highway

- Suite D-1
- 1,100 sf
- \$23.50 psf + utilities



Suite D-1 Floor Plan



Build-to-Suit Site Plan

**AVISON
YOUNG**

For more information, please contact:

Frank X. Pagano
Senior Director
D 516 962 5402 M 516 263 0472
frank.pagano@avisonyoung.com

Paul Farrell
Associate
D 516 962 5507 M 631 662 3441
paul.farrell@avisonyoung.com

58 South Service Road, Suite 110 | Melville, NY 11747 | 516.962.5400 | avisonyoung.com

© 2025. The information contained herein was from sources deemed reliable and is believed to be true; it has not been verified and as such, cannot be warranted nor form any part of any future contract.