

JUPITER LAKES MEDICAL & PROFESSIONAL MEDICAL OFFICE CONDO

210 Jupiter Lakes Blvd | Jupiter, FL



HIGHLIGHTS

- Two Medical office condos on the second floor combined.
- Office is currently set up with 3 offices, open area with three work stations set up, two restrooms with kitchen/breakroom.
- Located within Jupiter Lakes Medical Park that is an established park that offers a variety of medical practices and users that serves the local community.
- The location is across the street from the Jupiter Medical Center that has 327 beds. Jupiter Medical Center is a full-service facility, continuing to lead the way as a private, not-for-profit regional health care organization focused on innovation, collaboration and partnership with the community it serves and cares for more than 400,000 patients annually.

Demographics	1 Mile	3 Miles	5 Miles
Population	9,149	66,374	117,090
Daytime Employees	8,214	38,275	60,671
Average HH Income	\$131,364	\$132,536	\$146,264
Median Age	47.0	47.0	49.0



LIGHTHOUSE
REALTY SERVICES

Blair C. Lee, MAI, CCIM | 561.628.6683 | blair@lighthouserealtyvs.com

JUPITER LAKES MEDICAL & PROFESSIONAL MEDICAL OFFICE CONDO

210 Jupiter Lakes Blvd | Jupiter, FL



JUPITER LAKES MEDICAL & PROFESSIONAL MEDICAL OFFICE CONDO

210 Jupiter Lakes Blvd | Jupiter, FL



LIGHTHOUSE
REALTY SERVICES

Blair C. Lee, MAI, CCIM | 561.628.6683 | blair@lighthouserealtyvs.com

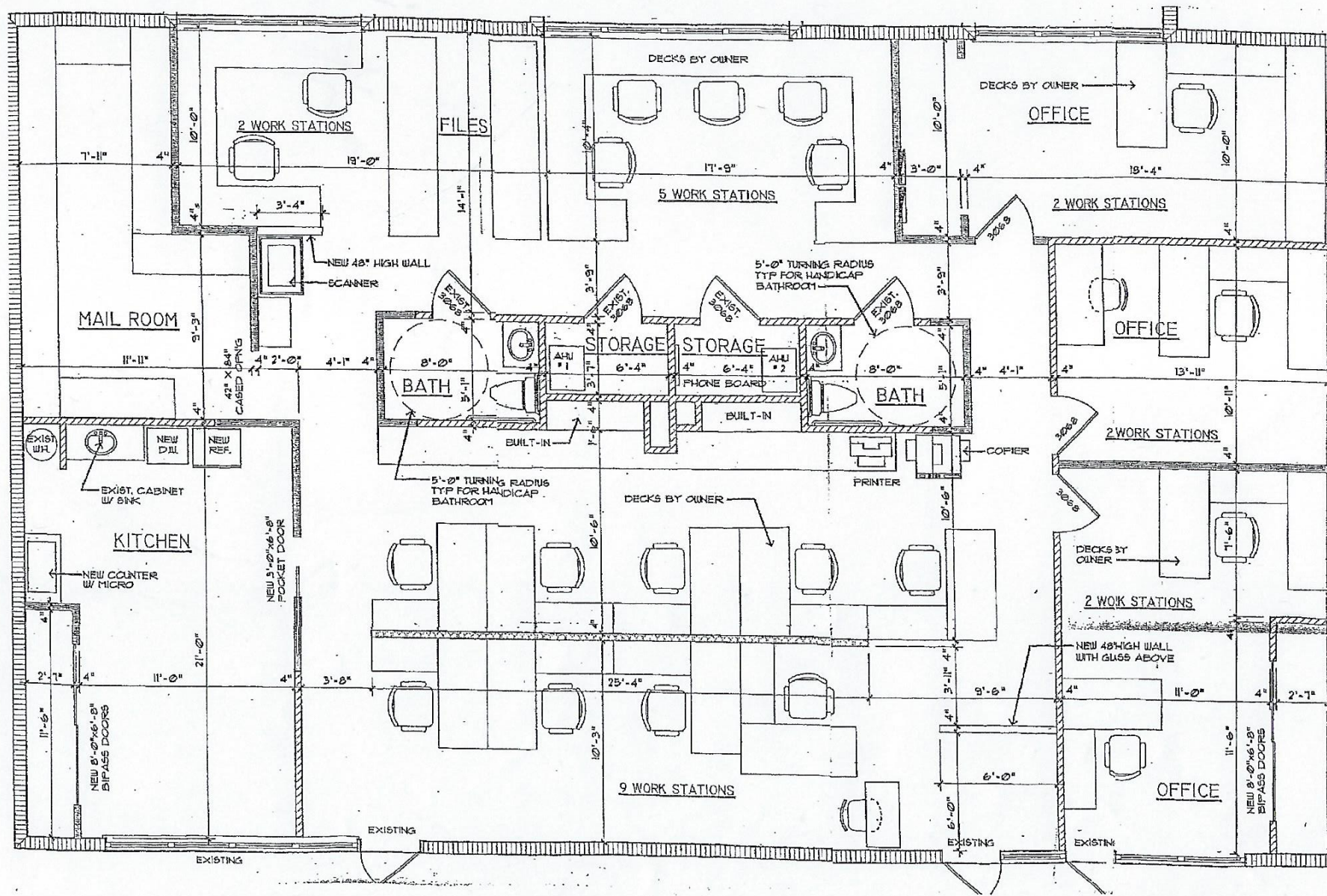
JUPITER LAKES MEDICAL & PROFESSIONAL MEDICAL OFFICE CONDO

210 Jupiter Lakes Blvd | Jupiter, FL



JUPITER LAKES MEDICAL & PROFESSIONAL MEDICAL OFFICE CONDO

210 Jupiter Lakes Blvd | Jupiter, FL



LIGHTHOUSE
REALTY SERVICES

Blair C. Lee, MAI, CCIM | 561.628.6683 | blair@lighthousealtysvs.com

JUPITER LAKES MEDICAL & PROFESSIONAL MEDICAL OFFICE CONDO

210 Jupiter Lakes Blvd | Jupiter, FL



LIGHTHOUSE
REALTY SERVICES

Blair C. Lee, MAI, CCIM | 561.628.6683 | blair@lighthouserealtyvs.com