

Commercial Land FOR SALE



BRUCE'S BODY SHOP

5548 Olde Towne Road • Williamsburg, VA

- Excellent retail/restaurant opportunity
- All utilities are available to the site
- Just one block west of the intersection of Richmond Road and Olde Towne Road
- Across Olde Towne road from the ± 450,000 sqft Premier Outlets, which is ranked the No. 8 outlet mall in the industry by the publication Value Retail News
- 2 Miles East of the Williamsburg Pottery Factory
- 3 Miles West of Colonial Williamsburg

RJS & Associates. Inc.

Commercial Real Estate
Brokerage

423 N. Boundary Street, Ste
200

Williamsburg, Virginia 23185-5629

RJS
& ASSOCIATES, INC.

PRICE:

\$ 450,000

LAND SIZE:

± 0.93 Acres

ZONING:

B-1 (General Business)

FRONTAGE:

Olde Towne Road: ± 326 ft

For more Information
Contact:

Joseph P. Singley

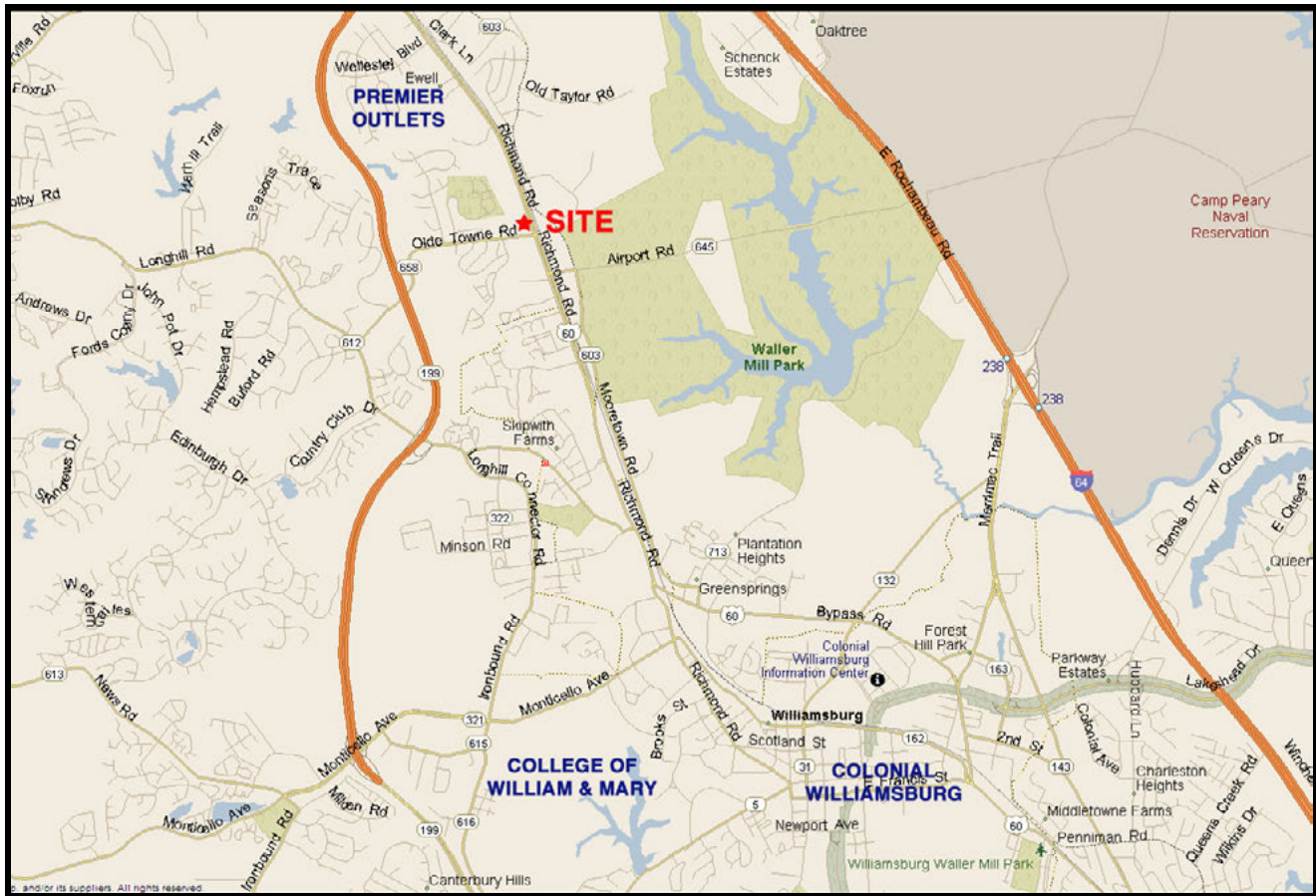
(757) 229-3139

Fax (757) 220-2475

joe@rjsassoc.com

BRUCE'S BODY SHOP

5548 Olde Towne Road • Williamsburg, VA



MAP

2013 Demographics	1 Mile	3 Mile	5 Mile
Total Population	5,229	26,421	57,535
Total Households	2,102	11,223	22,352
Median Household Income	\$53,324	\$56,410	\$63,758

RJS & Associates. Inc.

Commercial Real Estate
Brokerage

423 N. Boundary Street, Ste 200
Williamsburg, Virginia 23185-5629



For more Information
Contact:

Joseph P. Singley

(757) 229-3139

Fax (757) 220-2475

joe@rjsassoc.com

BRUCE'S BODY SHOP

5548 Olde Towne Road • Williamsburg, VA



AERIAL

RJS & Associates. Inc.

Commercial Real Estate
Brokerage

423 N. Boundary Street, Ste 200
Williamsburg, Virginia 23185-5629

RJS
& ASSOCIATES, INC.

For more Information
Contact:

Joseph P. Singley

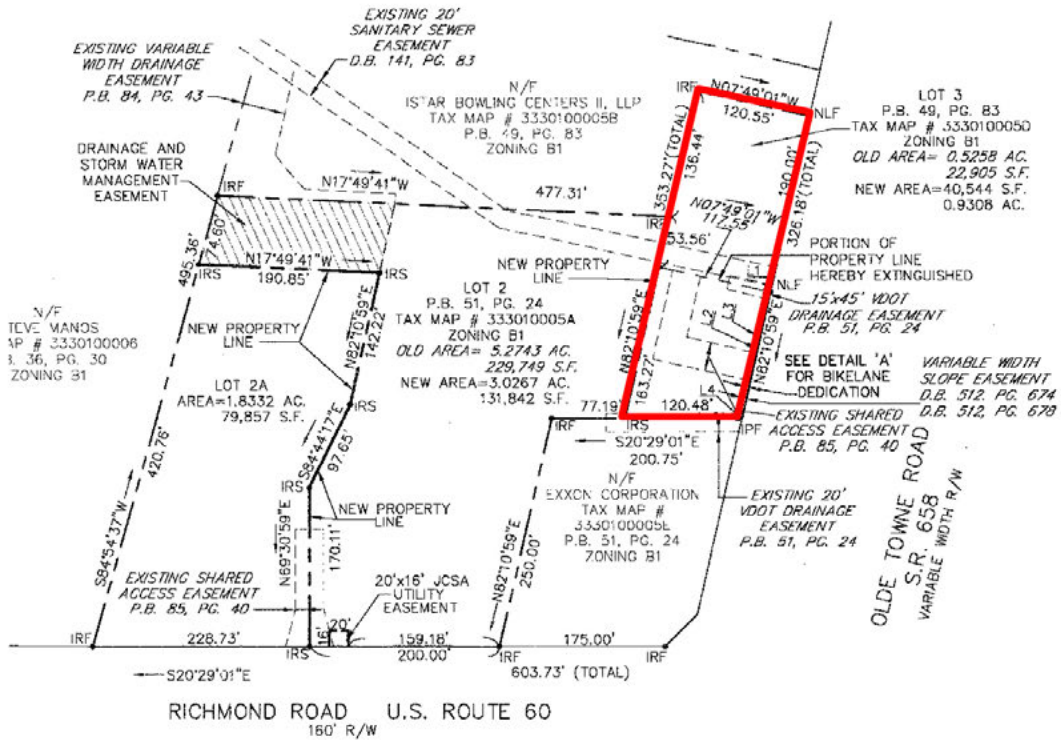
(757) 229-3139

Fax (757) 220-2475

joe@rjsassoc.com

BRUCE'S BODY SHOP

5548 Olde Towne Road • Williamsburg, VA



PLAT

RJS & Associates. Inc.
 Commercial Real Estate
 Brokerage
 423 N. Boundary Street, Ste 200
 Williamsburg, Virginia 23185-5629



For more Information
 Contact:
Joseph P. Singley
 (757) 229-3139
 Fax (757) 220-2475
 joe@rjsassoc.com