

**WASHINGTON PLAZA
78-078 COUNTRY CLUB DRIVE
BERMUDA DUNES, CA 92203**



Well maintained shopping center / business park on the corner of Country Club and Washington facing Country Club Drive. Retail units with warehouse for inventory. Typical unit is 80% open showroom/office with warehouse in the rear. Each unit has 200 amps of 3 phase power, a 12X14 loading door and approximately 20 feet of clear height in the warehouse area. IID UTILITIES.

SPACE AVAILABLE

<u>Building/Suite</u>	<u>Square Feet</u>	<u>Rate</u>	<u>Available</u>	<u>Unit Description</u>
Suite # 207/208*	3,000	\$1.25	Now	Approx. 2,400 square feet of showroom / office and 600 square feet of warehouse with two 12 X 14 loading doors.
Suite # 209*	1,500	\$1.25	Now	Approx. 1,200 square feet of showroom and 500 square feet of warehouse with a 12 X 14 loading door.

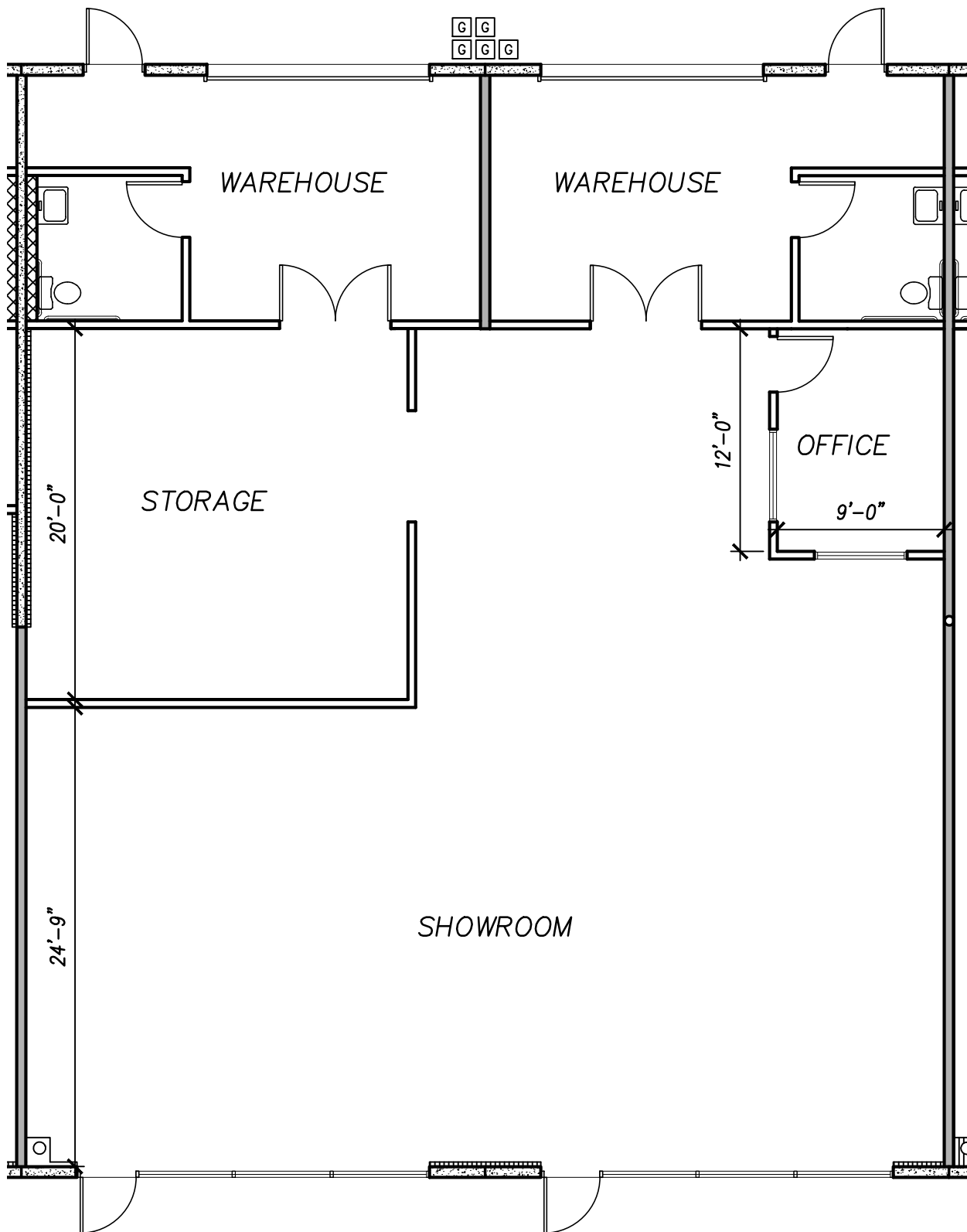
NNN Fee's = \$0.44 psf

For More Information Call:

Ned Geoghegan, Director of Leasing (760) 345-6698 – Office
(818) 519-0592 – Cell

*Can be combined for 4,500 square feet

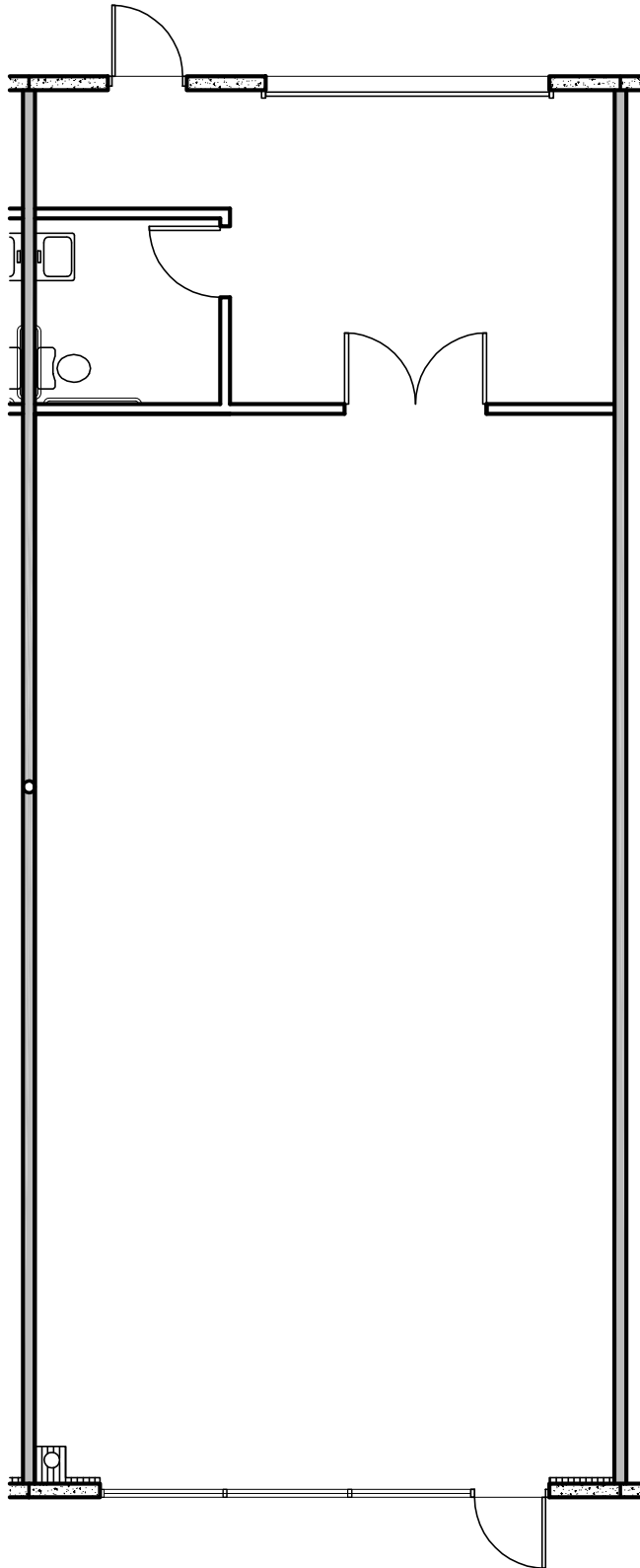




WASHINGTON PLAZA - BLDG 2, SUITE 207 & 208

BERMUDA DUNES, CA

Scale: 1/8"=1'-0"



1

WASHINGTON PLAZA
SUITE #209

1/8"=1'-0"

WASHINGTON STREET

INTERSTATE 10
SOUTHERN PACIFIC RAILROAD

COUNTRY CLUB DRIVE

YUCCA LANE

WASHINGTON PLAZA AT COUNTRY CLUB DRIVE
BIRMINGHAM, AL

