

CHARLESTON AWNING & METAL CO.

3527

# INDUSTRIAL WAREHOUSE FOR SALE

3527 MEETING STREET RD  
NORTH CHARLESTON, SC 29405

*Versatile single-tenant property offering owner-user or value-add investment potential, featuring excellent accessibility and convenient access to major transportation corridors and the Charleston International Airport.*

*\*\*Click Here for S.C. Agency Relationships Disclosure*



Jon Chalfie | Charlotte Fonvielle  
843-345-6000 | 843-860-9509

LANDMARK-ENTERPRISES.COM



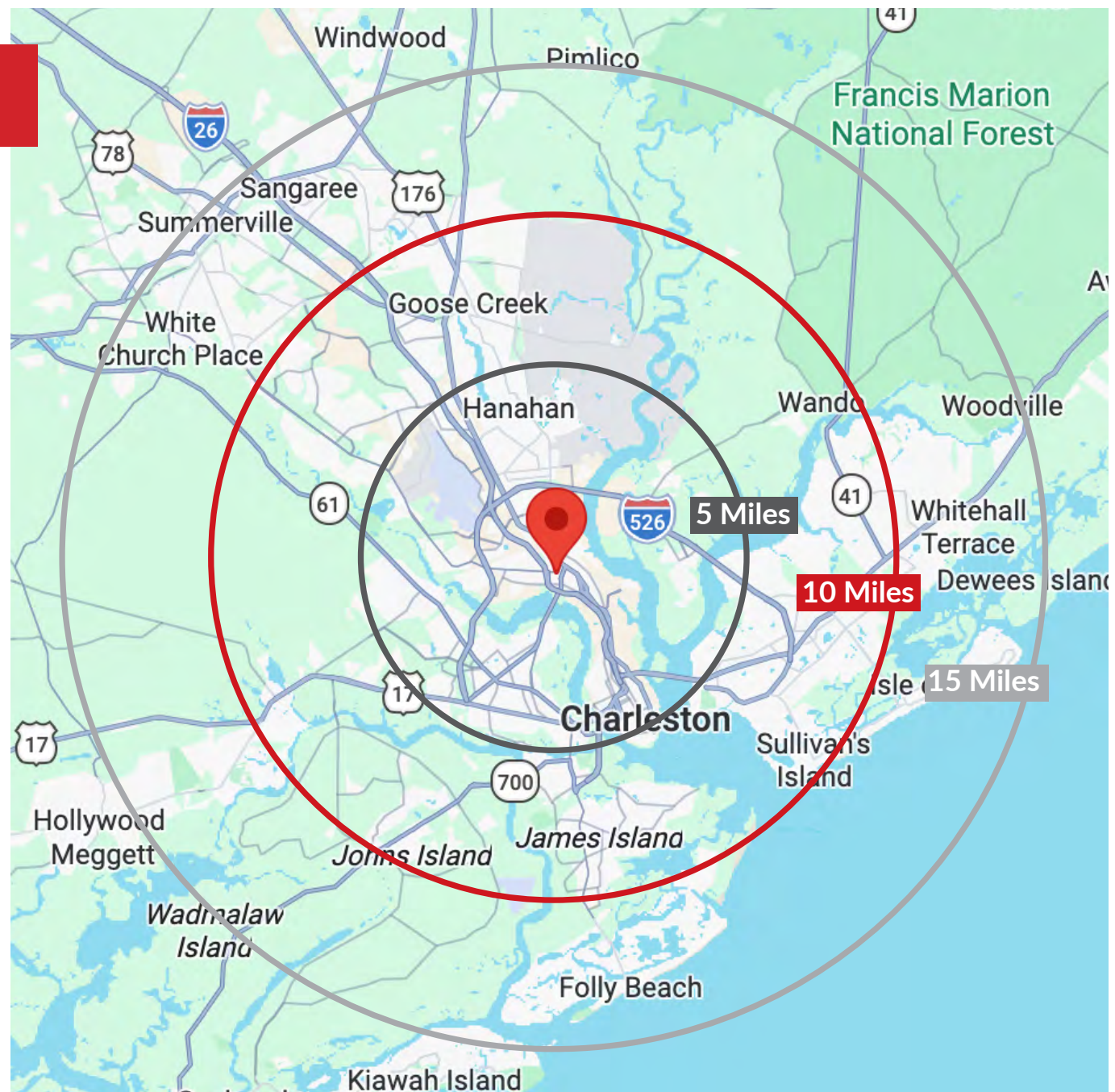
**3527 MEETING STREET RD  
NORTH CHARLESTON, SC 29405**

**INDUSTRIAL WAREHOUSE**

**FOR  
SALE**

SF: 4,631  
SALE PRICE: \$995,665  
SALE PRICE/SF: \$215  
TMS: 469-06-00-097  
ACRES: 0.43 ACRES  
YEAR BUILT: 1973

- Single-tenant industrial warehouse on ±0.43 AC in the North Charleston submarket, to be delivered vacant at closing, offering flexibility for owner-user or investor repositioning
- 16' clear height with one drive-in door; ideal for warehouse, contractor, or light industrial use
- Excellent access to Dorchester Rd, Rivers Ave, and Cosgrove Ave; only 5.6 miles from Charleston International Airport
- Positioned in a highly accessible industrial corridor with strong surrounding traffic counts and connectivity throughout Charleston/ North Charleston



**LANDMARK**  
ENTERPRISES  
COMMERCIAL REAL ESTATE

3527 MEETING STREET RD  
NORTH CHARLESTON, SC 29405  
[www.landmark-enterprises.com](http://www.landmark-enterprises.com)

ASHLEY RIVER

ASHLEY RIVER



COSGROVE AVE

DORCHESTER ROAD

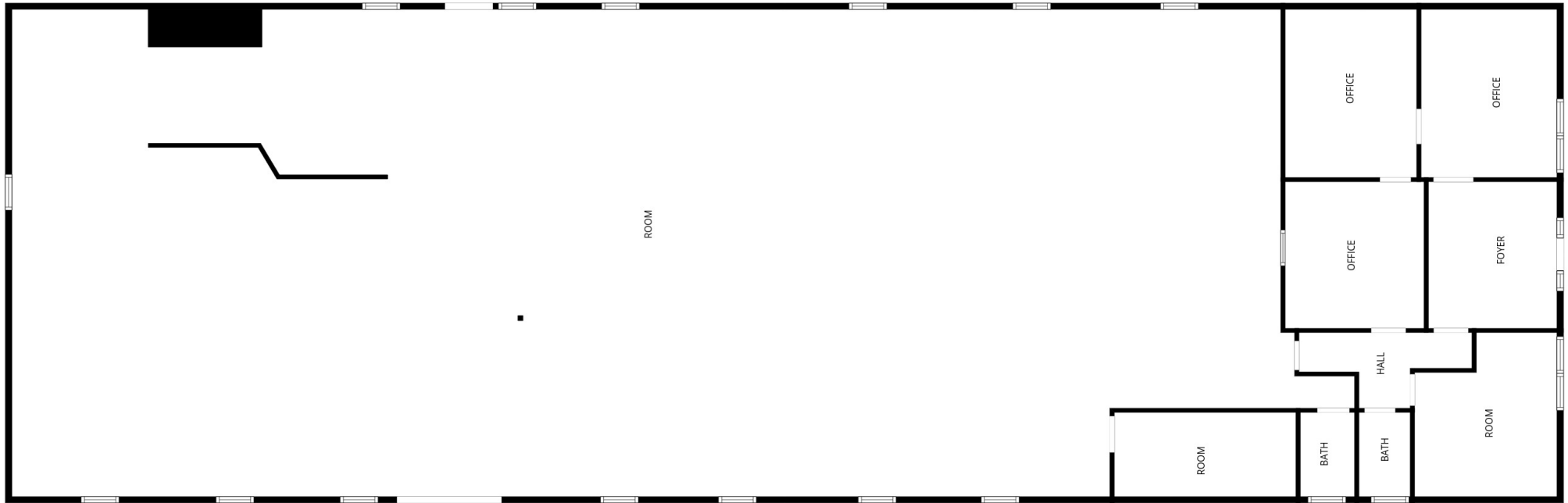
DORCHESTER ROAD

MEETING STREET ROAD



LANDMARK  
ENTERPRISES  
COMMERCIAL REAL ESTATE

3527 MEETING STREET RD  
NORTH CHARLESTON, SC 29405  
[www.landmark-enterprises.com](http://www.landmark-enterprises.com)



FLOOR PLAN CREATED BY CUBICASA APP. MEASUREMENTS DEEMED HIGHLY RELIABLE BUT NOT GUARANTEED.



**LANDMARK**  
ENTERPRISES  
COMMERCIAL REAL ESTATE

3527 MEETING STREET RD  
NORTH CHARLESTON, SC 29405  
[www.landmark-enterprises.com](http://www.landmark-enterprises.com)



**INDUSTRIAL WAREHOUSE**  
**FOR SALE**

**3527 Meeting Street Rd  
North Charleston, SC 29405**

**[www.landmark-enterprises.com](http://www.landmark-enterprises.com)**



**Jon Chalfie**  
VP of Brokerage  
**843-345-6000**



**Charlotte Fonvielle**  
Commercial Associate  
**843-860-9509**

***Contact the agents today to learn more!***

\*We obtained the information above from sources we believe to be reliable. However, we have not verified its accuracy and make no guarantee, warranty or representation about it. It is submitted subject to the possibility of errors, omissions, change of price, rental or other conditions, prior sale, lease or financing, or withdrawal without notice. We include projections, opinions, assumptions or estimates for example only, and they may not represent current or future performance of the property. You and your tax and legal advisors should conduct your own investigation of the property and transaction.



**LANDMARK  
ENTERPRISES**  
COMMERCIAL REAL ESTATE