

# GLEMKA BUSINESS PARK

43218 - 43280 BUSINESS PARK DRIVE, TEMECULA, CA 92590

PROFESSIONAL OFFICE  
SPACE FOR LEASE



FOR MORE INFORMATION, PLEASE CONTACT:

**CAREY PASTOR** | Senior Vice President

(951) 297-7434 | [cpastor@cbcsocalgroup.com](mailto:cpastor@cbcsocalgroup.com)

CalDRE License # 01403298



**COLDWELL BANKER  
COMMERCIAL**  
SC



# GLEMKA BUSINESS PARK

43218 - 43280 BUSINESS PARK DRIVE, TEMECULA, CA 92590

PROFESSIONAL OFFICE  
SPACE FOR LEASE



## PROJECT HIGHLIGHTS

- The Glemka Business Park is located on Business Park Drive in Temecula, CA
- Easy access to the I-15 freeway via Rancho California Rd.
- Ample parking
- 1st Floor office space with private entrance and restroom
- Availability from +/- 900 SF - 2,100 SF
- Professionally Managed
- Retail and restaurant amenities nearby
- FiOS enabled

# GLEMKA BUSINESS PARK

43218 - 43280 BUSINESS PARK DRIVE, TEMECULA, CA 92590

PROFESSIONAL OFFICE  
SPACE FOR LEASE

## AVAILABILITY

### 43218 Business Park Drive

SUITE	SIZE	MONTHLY BASE RENT	EST. MONTHLY CAO E	SPACE DESCRIPTION
101	±900 SF	\$1,260.00	\$189.00	1st floor office space with private entrance. Reception area, 3 private offices, wet bar and restroom

### 43280 Business Park Drive

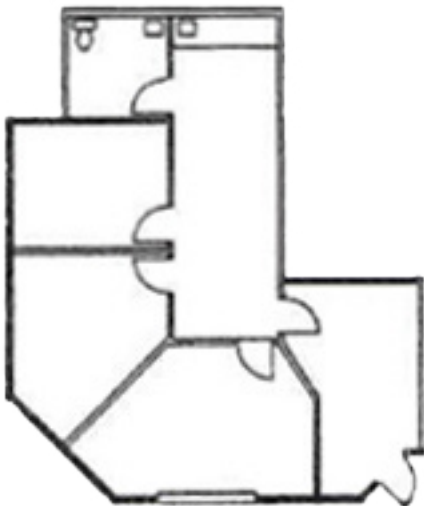
SUITE	SIZE	MONTHLY BASE RENT	EST. MONTHLY CAO E	SPACE DESCRIPTION
101	±1,100 SF	\$1,540.00	\$231.00	Open floor plan with 1 restroom
102	±1,000 SF	\$1,400.00	\$210.00	Open bull pen, 2 private offices, 1 restroom

101/102 Can be combined for +/- 2,100 SF

CAOE = Common Area Operating Expenses

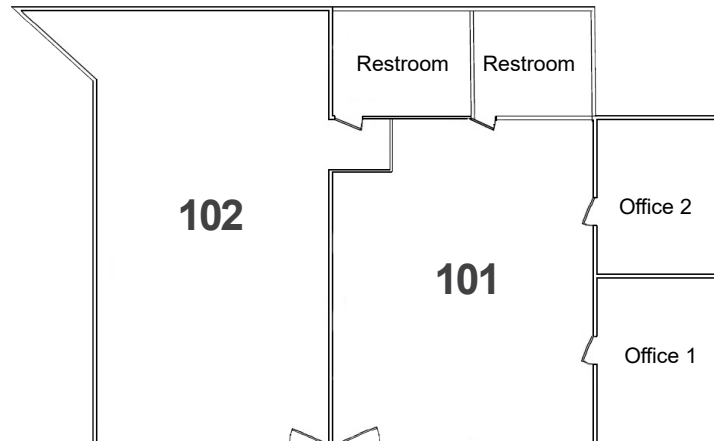
Additional Expenses: Gas Service: \$25.00 per month

**43218 - 101  
FLOORPLAN**

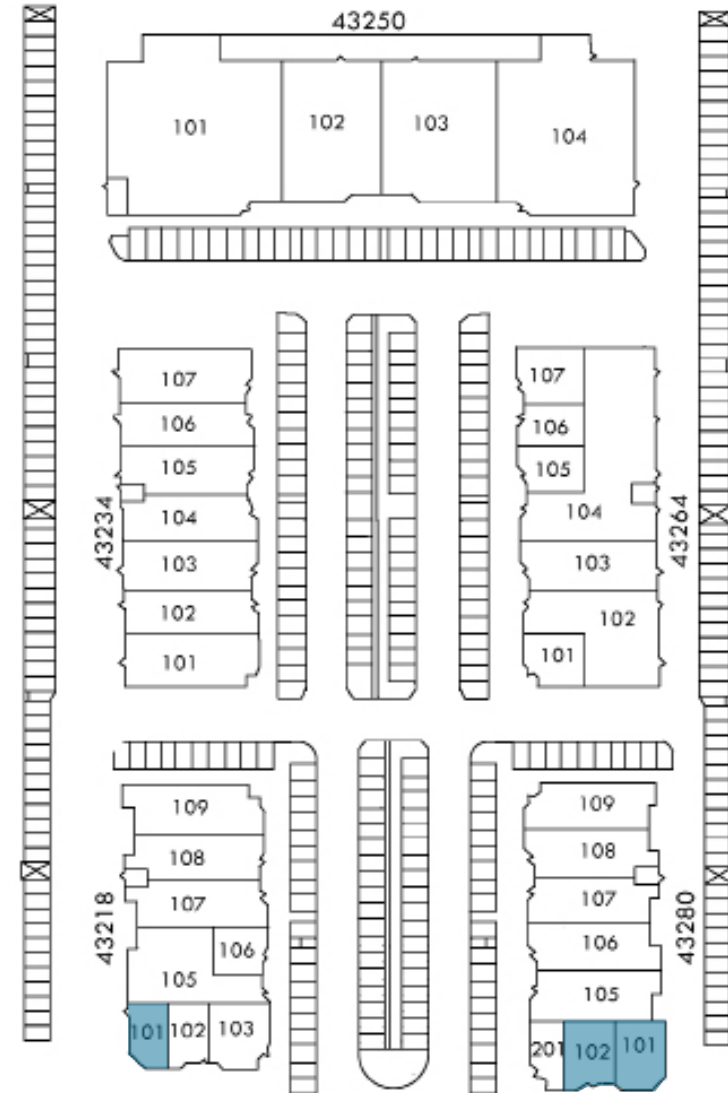


\* Not to scale

**43280 - 101,102  
FLOORPLAN**



\* Not to scale

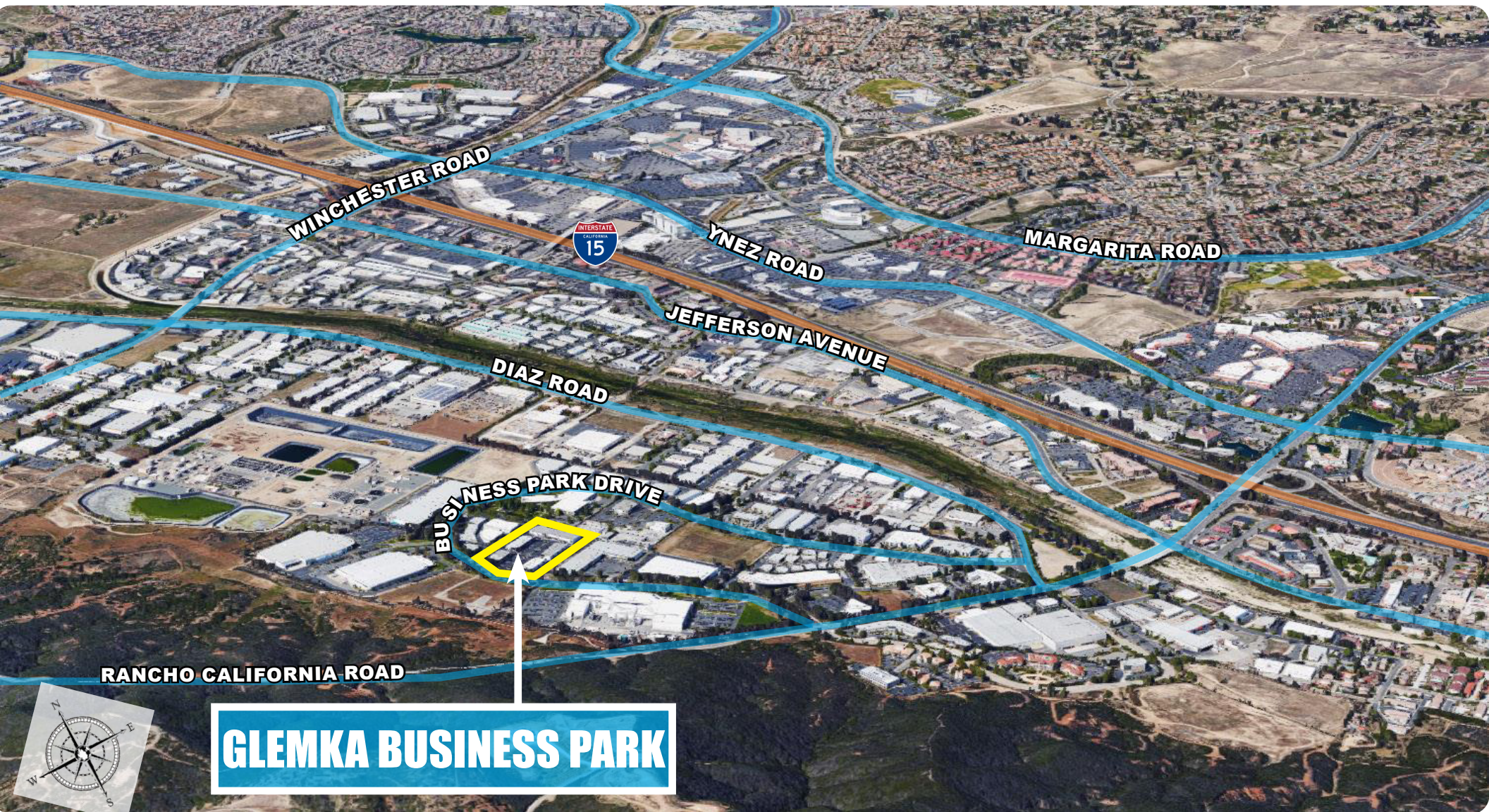




# GLEMKA BUSINESS PARK

43218 - 43280 BUSINESS PARK DRIVE, TEMECULA, CA 92590

PROFESSIONAL OFFICE  
SPACE FOR LEASE





# GLEMKA BUSINESS PARK

43218 - 43280 BUSINESS PARK DRIVE, TEMECULA, CA 92590

PROFESSIONAL OFFICE  
SPACE FOR LEASE





# GLEMKA BUSINESS PARK

43218 - 43280 BUSINESS PARK DRIVE, TEMECULA, CA 92590

PROFESSIONAL OFFICE  
SPACE FOR LEASE



FOR MORE INFORMATION, PLEASE CONTACT:

**CAREY PASTOR**

Senior Vice President

951.297.7434

[cpastor@cbsocalgroup.com](mailto:cpastor@cbsocalgroup.com)

CalDRE # 01403298

27368 Via Industria | Suite 102

Temecula | California | 92590

t 951.200.7683 | f 951.239.3147

[cbsocalgroup.com](http://cbsocalgroup.com)



**COLDWELL BANKER  
COMMERCIAL**  
SC