

9325 MALTBY ROAD  
BRIGHTON, MICHIGAN

INDUSTRIAL FOR SALE OR LEASE  
30,000 Square Feet Available



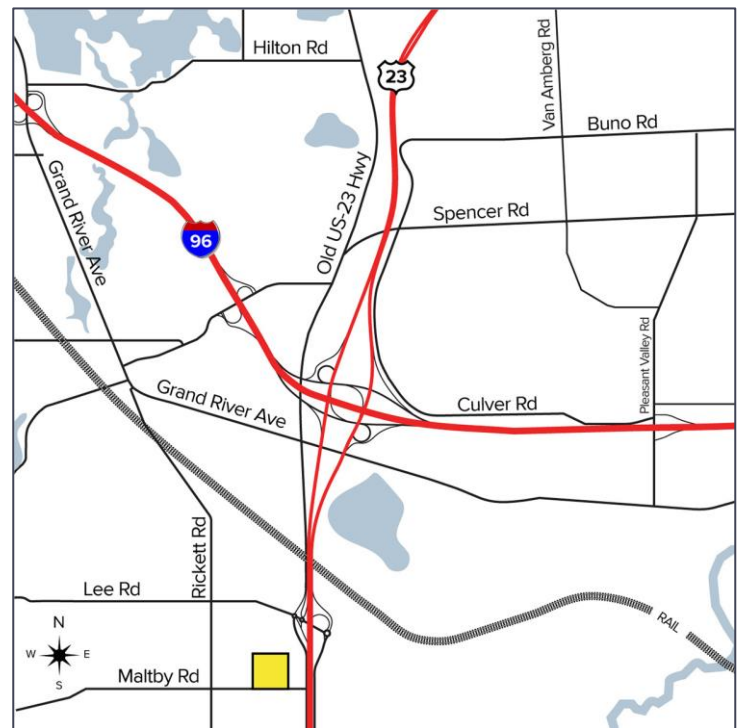
**SIGNATURE  
ASSOCIATES**  
KNOW SIGNATURE | KNOW RESULTS

**CLEAN WAREHOUSE**



## PROPERTY FEATURES

- 30,000 square feet available
- 14'-24' clear height
- Second level mezzanine
- (2) truckwells, (1) 14x14 grade level door
- Zoned GB, Light Industrial uses accepted
- Extensive parking
- 700 Amps, 240 Volts
- Located on 4 acres
- Easy access to I-96, US-23 and all services
- Lease Rate: \$8.00/sq.ft. Gross
- Sale Price: \$2,300,000 (\$76.67/sq.ft.)



For more information, please contact:

**JIM MONTGOMERY**  
(248) 359 0614  
jmontgomery@signatureassociates.com

**CHRISTOPHER M. D'ANGELO**  
(248) 948 0109  
cdangelo@signatureassociates.com

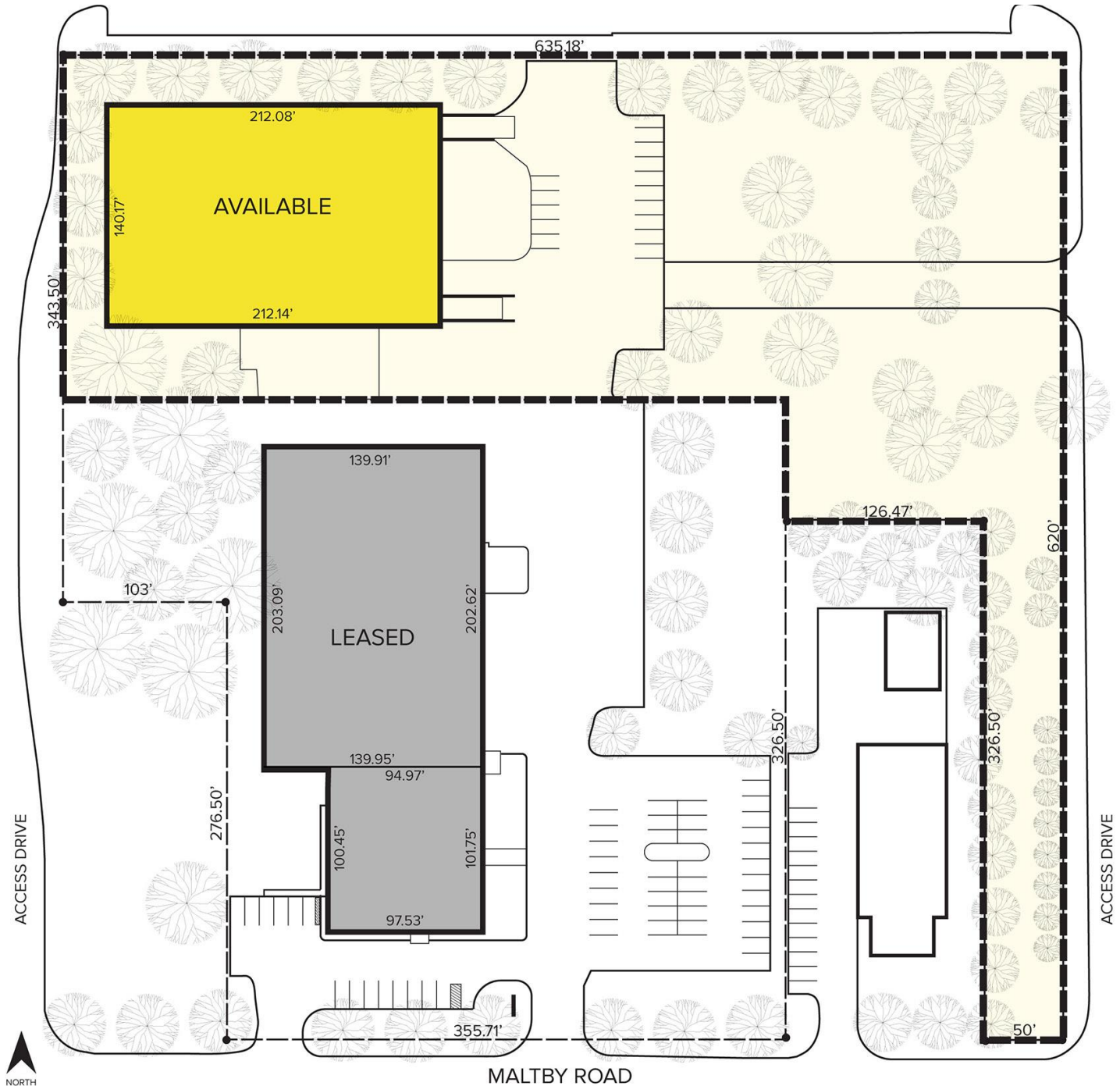
**SIGNATURE ASSOCIATES**  
One Towne Square, Suite 1200  
Southfield, MI 48076  
www.signatureassociates.com

# 9325 Maltby Road – Brighton, Michigan

## Industrial For Sale

30,000  
Square Feet  
AVAILABLE

### Site Plan



For more information, please contact:

**JIM MONTGOMERY**  
(248) 359 0614  
jmontgomery@signatureassociates.com

**CHRISTOPHER M. D'ANGELO**  
(248) 948 0109  
cdangelo@signatureassociates.com

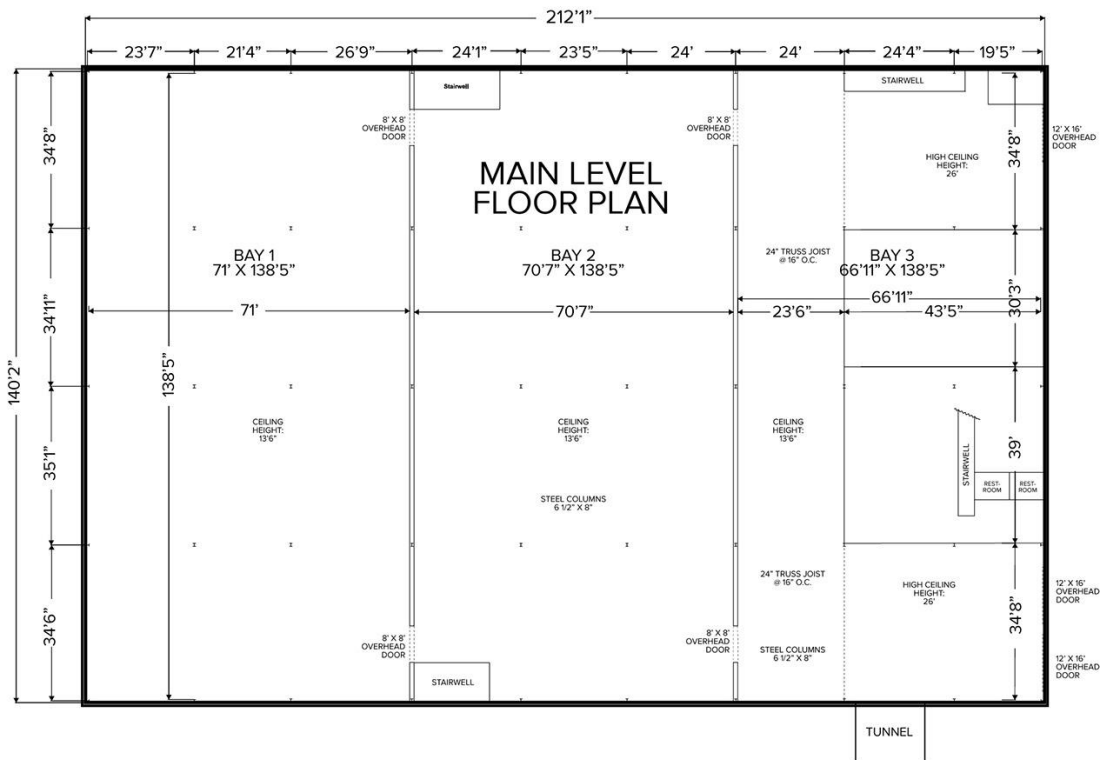
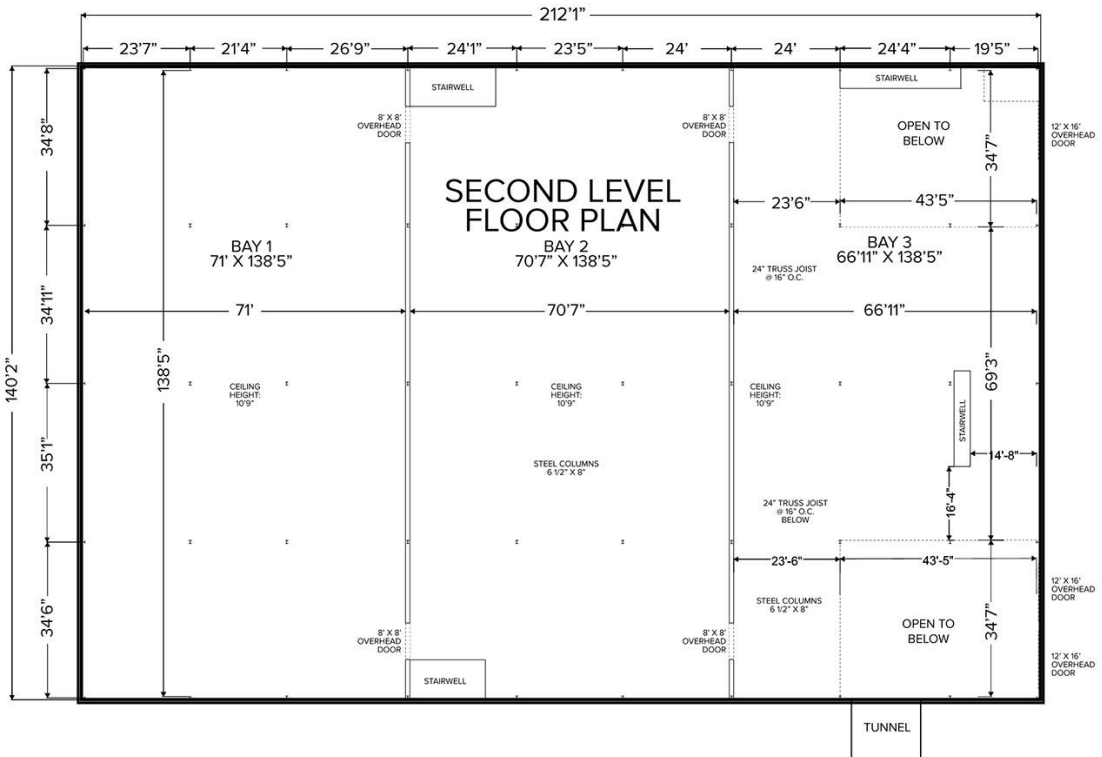
**SIGNATURE ASSOCIATES**  
One Towne Square, Suite 1200  
Southfield, MI 48076  
www.signatureassociates.com

# 9325 Maltby Road – Brighton, Michigan

## Industrial For Sale

30,000  
Square Feet  
AVAILABLE

### Site Plan



For more information, please contact:

**JIM MONTGOMERY**  
(248) 359 0614

[jmontgomery@signatureassociates.com](mailto:jmontgomery@signatureassociates.com)

**CHRISTOPHER M. D'ANGELO**  
(248) 948 0109

[cdangelo@signatureassociates.com](mailto:cdangelo@signatureassociates.com)

**SIGNATURE ASSOCIATES**  
One Towne Square, Suite 1200  
Southfield, MI 48076  
[www.signatureassociates.com](http://www.signatureassociates.com)

# 9325 Maltby Road – Brighton, Michigan

Industrial For Sale

30,000  
Square Feet  
AVAILABLE

Aerial



For more information, please contact:

**JIM MONTGOMERY**  
(248) 359 0614  
jmontgomery@signatureassociates.com

**CHRISTOPHER M. D'ANGELO**  
(248) 948 0109  
cdangelo@signatureassociates.com

**SIGNATURE ASSOCIATES**  
One Towne Square, Suite 1200  
Southfield, MI 48076  
www.signatureassociates.com

Information is subject to verification and no liability for errors or omissions is assumed. Price is subject to change and listing withdrawal.

# 9325 Maltby Road – Brighton, Michigan

## Industrial For Sale

30,000  
Square Feet  
AVAILABLE

### Labeled Aerial



For more information, please contact:

**JIM MONTGOMERY**  
(248) 359 0614  
jmontgomery@signatureassociates.com

**CHRISTOPHER M. D'ANGELO**  
(248) 948 0109  
cdangelo@signatureassociates.com

**SIGNATURE ASSOCIATES**  
One Towne Square, Suite 1200  
Southfield, MI 48076  
www.signatureassociates.com