

FOR SALE

**OFFICE IN
SUNRISE PROFESSIONAL CENTER**



**2331 N State Road 7, Unit 216
Lauderhill, FL 33313**

659 +/- SQFT



- Located in versatile professional center
- Zoned in CG (Commercial General) area for many types of businesses
- Located on State Road 7 with plenty of visibility and parking
- Functional layout: reception/office area, open floor, two private offices, kitchen, and one restroom

Price Negotiable

Call or text 954-224-8773 for more information!



JOE PELAYO, CCIM, SIOR
BROKER
trec@joepelayo.com
954.224.8773



GEORGE PELAYO
BROKER ASSOCIATE
george@trecfl.com
954.482.1330



NOTICE: This information has been obtained from sources believed to be reliable but has not been verified. No warranty or representation, express or implied, is made as to the condition/legal adjustments of the property (or properties) referenced or as to the accuracy or completeness of the information contained, and same is submitted subject to errors, omissions, change of price, retail or other conditions, including but not limited to withdrawal without notice, and to any special listing conditions imposed by the property owner.

FOR SALE

**OFFICE IN
SUNRISE PROFESSIONAL CENTER**

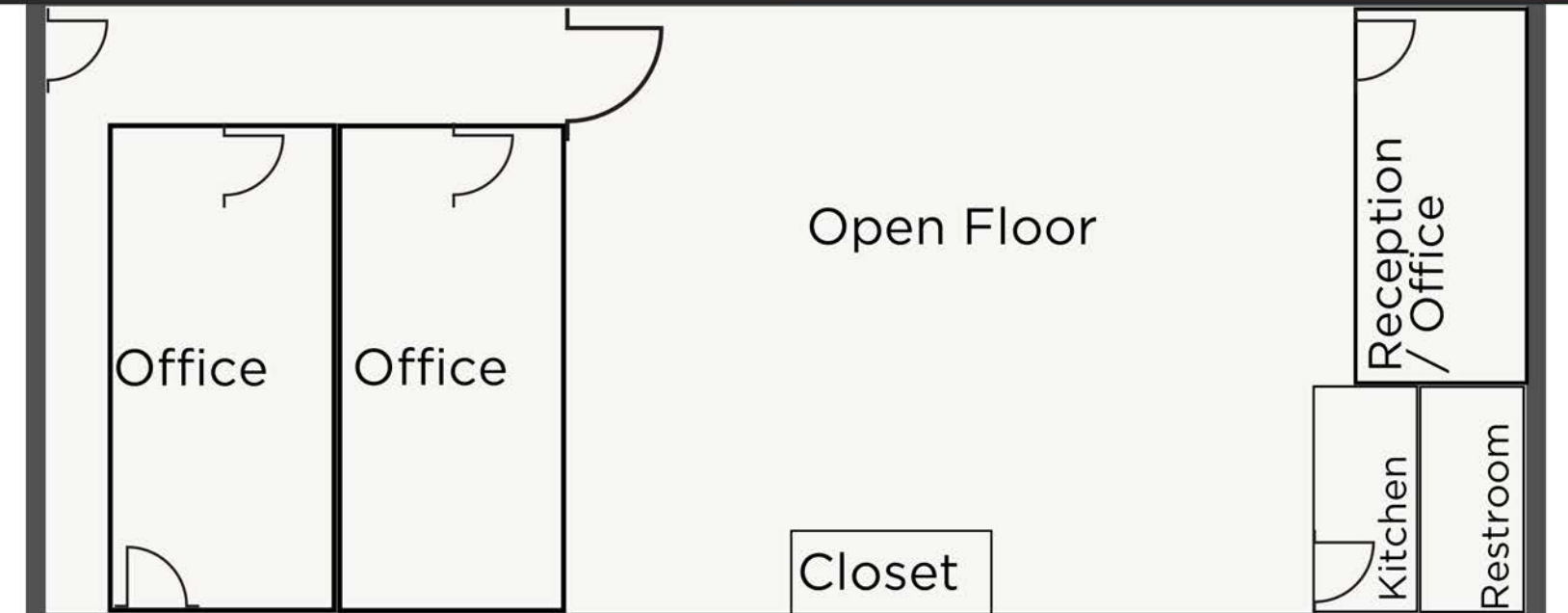
2331 N State Road 7, Unit 216, Lauderhill, FL 33313



Sketch/Layout

659 +/- SQFT

***Not to scale.*



JOE PELAYO, CCIM, SIOR
BROKER
trec@joepelayo.com
954.224.8773

TREC
Total Real Estate Consultants Inc.
www.trecfl.com

GEORGE PELAYO
BROKER ASSOCIATE
george@trecfl.com
954.482.1330



NOTICE: This information has been obtained from sources believed to be reliable but has not been verified. No warranty or representation, express or implied, is made as to the condition/legal adjustments of the property (or properties) referenced or as to the accuracy or completeness of the information contained, and same is submitted subject to errors, omissions, change of price, retail or other conditions, including but not limited to withdrawal without notice, and to any special listing conditions imposed by the property owner.