

FOR SALE

INDUSTRIAL PROPERTY



20 BELLOWS ROAD

20 BELLOWS RD, RAYNHAM, MA 02767

For More Information

DAVE ELLIS

781.919.0800 X701

dave@ellisrealtyadvisors.com



20 BELLOWS ROAD



OFFERING SUMMARY

Sale Price:	Subject To Offer
Building Size:	15,000 SF
Available SF:	15,000 SF
Lot Size:	59,403 SF
Price / SF:	-
Year Built:	1998
Zoning:	Business (B-1)
Submarket:	Route 24

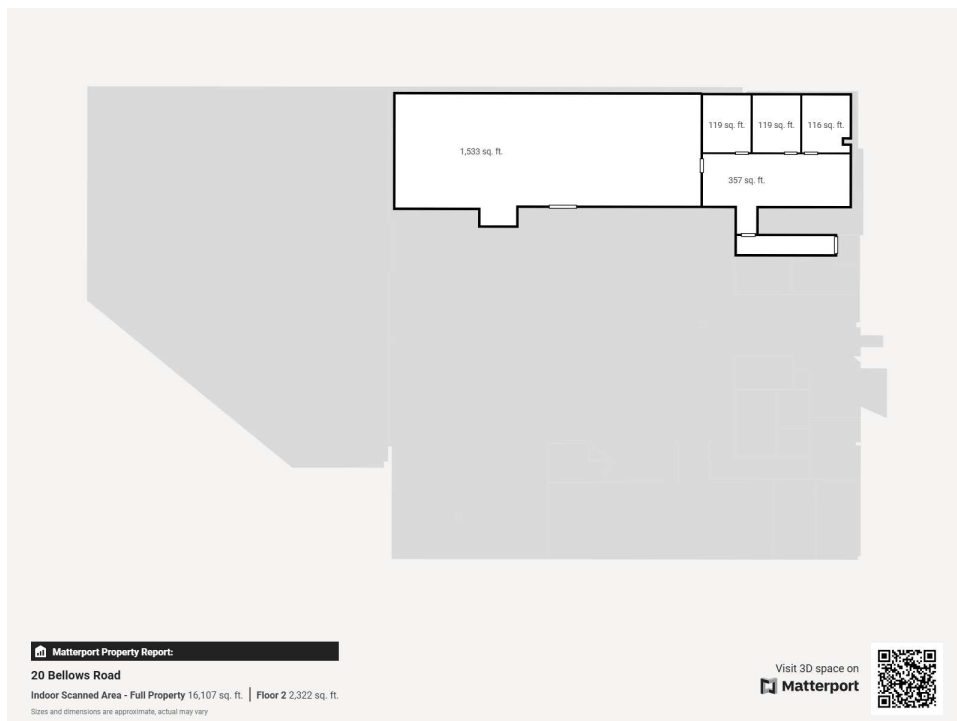
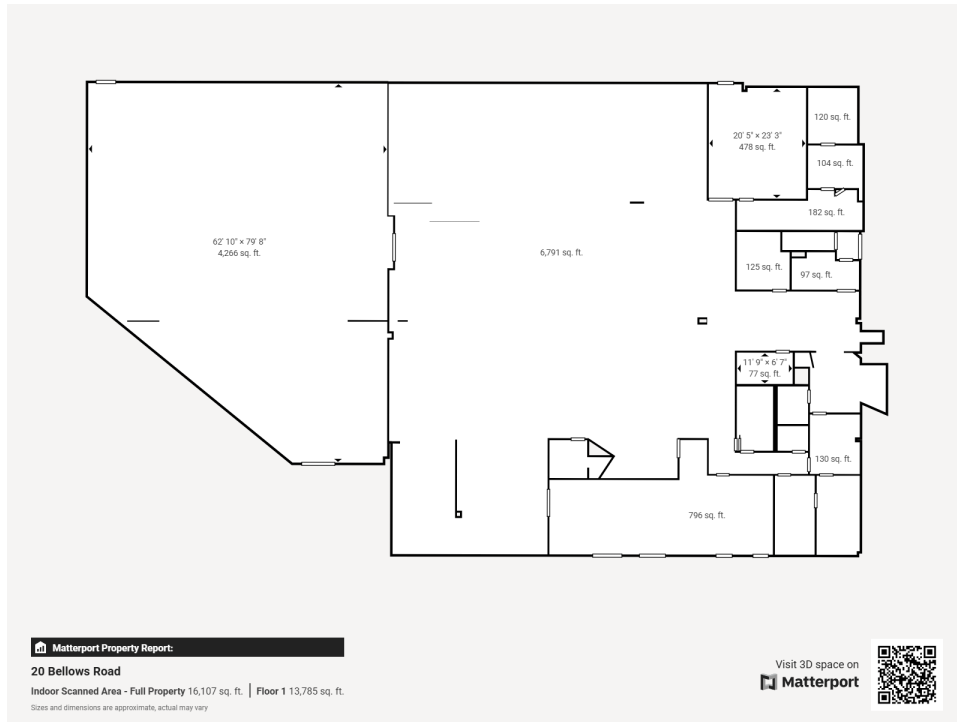
PROPERTY OVERVIEW

Stand-alone industrial building opportunity with 100% HVAC warehouse. The building features spacious climate-controlled warehouse and showroom with high ceilings, 3 loading docks, and an additional 2,000 square foot mezzanine. The well-appointed office space provides a comfortable and professional environment for staff and clients. Ample parking and easy access to major transportation routes make it a prime location for logistics operations.

PROPERTY HIGHLIGHTS

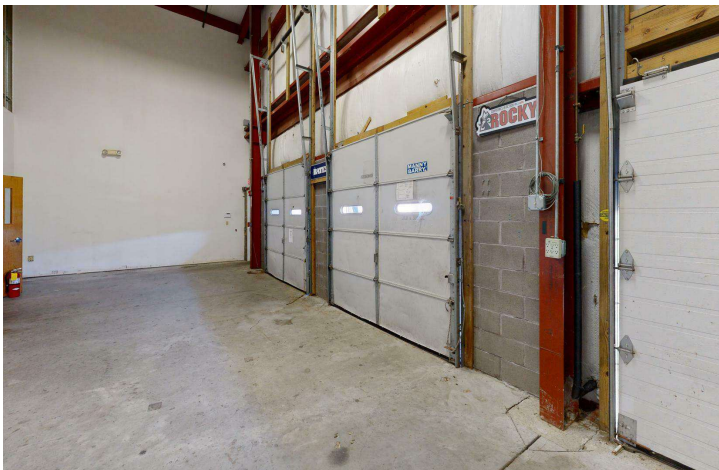
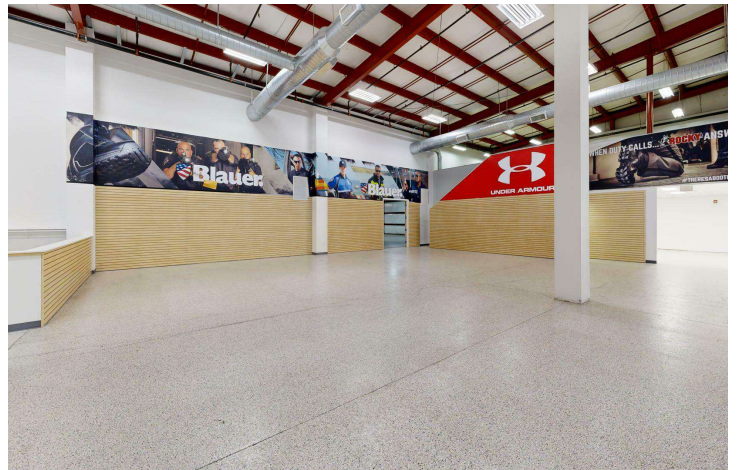
- - 100% HVAC warehouse with high 24' ceilings
- - Loading Dock and Drive-in
- - Modern, well-appointed office space
- - Ample parking for employees and visitors
- - Easy access to major transportation routes
- - Flexible layout to suit various business needs

20 BELLOWS ROAD



ADDITIONAL PHOTOS

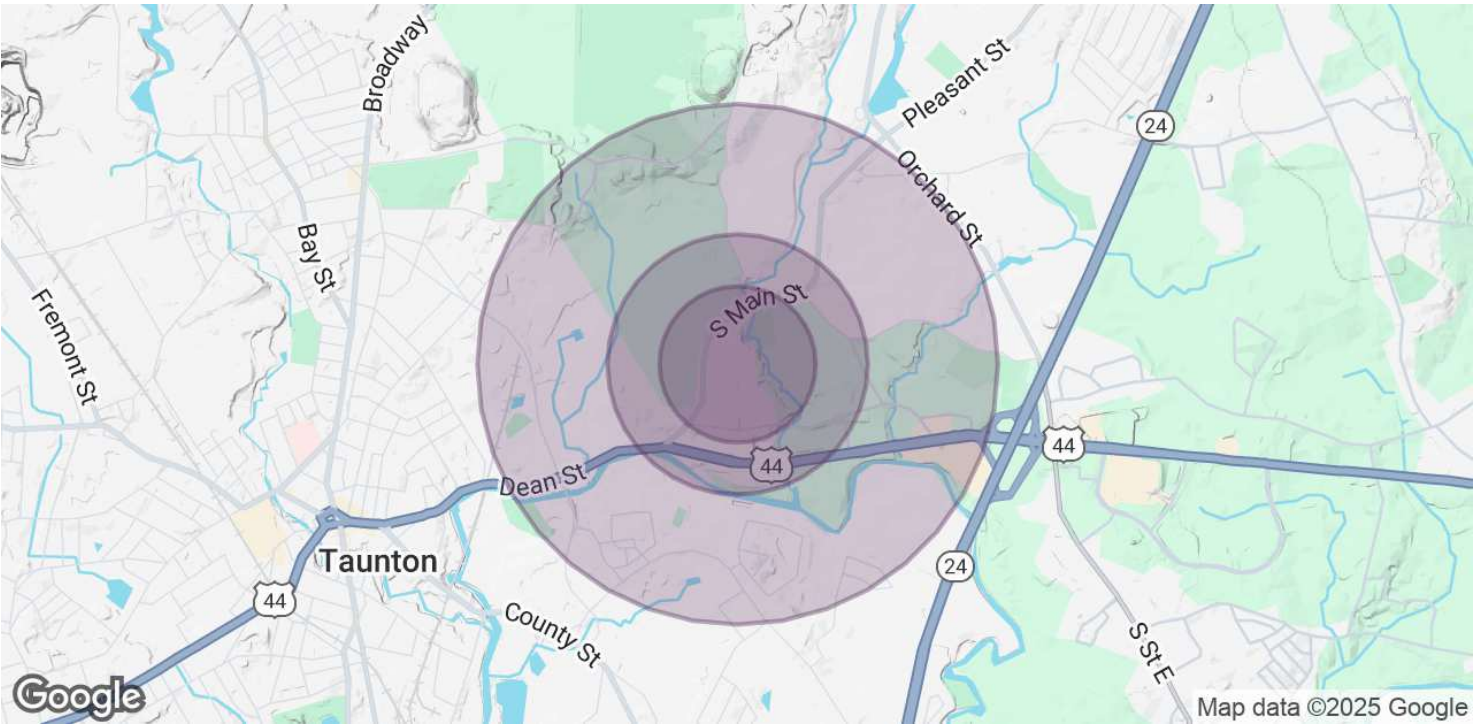
20 BELLOWS ROAD





781.919.0800 x701
dave@ellisrealtyadvisors.com

20 BELLOWS ROAD



POPULATION	0.3 MILES	0.5 MILES	1 MILE
Total Population	217	569	2,812
Average Age	51	48	45
Average Age (Male)	48	46	44
Average Age (Female)	53	50	47

HOUSEHOLDS & INCOME	0.3 MILES	0.5 MILES	1 MILE
Total Households	90	234	1,115
# of Persons per HH	2.4	2.4	2.5
Average HH Income	\$120,558	\$116,416	\$117,019
Average House Value	\$498,530	\$480,038	\$454,290

Demographics data derived from AlphaMap