

1224 RANDOLPH STREET
DETROIT, MICHIGAN

RETAIL FOR SALE OR LEASE
6,300 Square Feet Available



**SIGNATURE
ASSOCIATES**
KNOW SIGNATURE | KNOW RESULTS

RESTAURANT OPPORTUNITY



PROPERTY FEATURES

- 6,300 square feet available
- Former burger and pizza restaurant in excellent condition with equipment in place including hood, pizza oven and coolers
- Outside patio possible in this prime downtown location
- Centrally located between the Development at Cadillac Square (anchored by the Cosm Detroit immersive entertainment venue) and the Greektown Monroe Streetscape revitalization, positioning the property within a growing, pedestrian-oriented entertainment corridor
- Turn-key for a restaurant/bar
- Delivery area in rear of building, street parking
- Building signage available
- Zoned B-4
- Lease Rate: \$30.00/sq. ft. NNN
- Sale Price: Contact Brokers



For more information, please contact:

PETER VANDERKAAY

(248) 359 3837

pvanderkaay@signatureassociates.com

BRUCE BAJA

(248) 799 3177

bbaja@signatureassociates.com

SIGNATURE ASSOCIATES

One Towne Square, Suite 1200

Southfield, MI 48076

www.signatureassociates.com

1224 Randolph Street – Detroit, Michigan

Retail For Sale or Lease

6,300
Square Feet
AVAILABLE



For more information, please contact:

PETER VANDERKAAY

(248) 359 3837

pvanderkaay@signatureassociates.com

BRUCE BAJA

(248) 799 3177

bbaja@signatureassociates.com

SIGNATURE ASSOCIATES

One Towne Square, Suite 1200

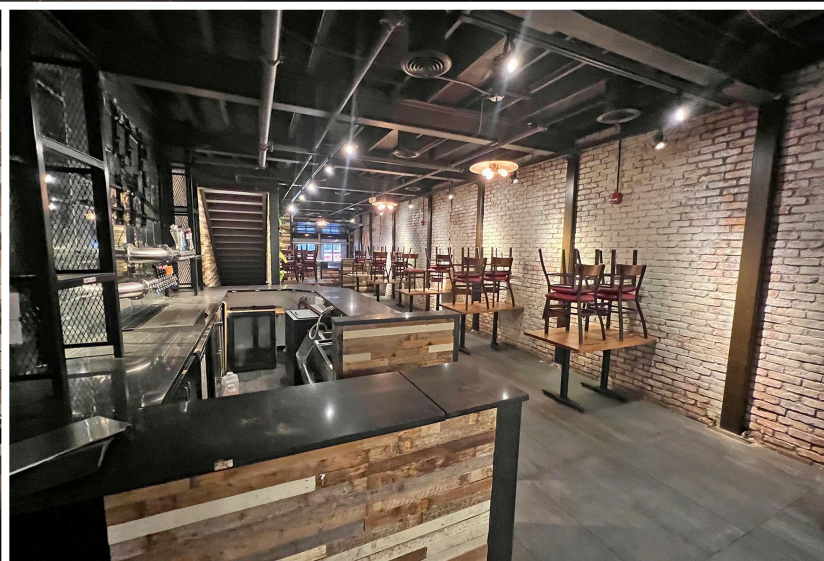
Southfield, MI 48076

www.signatureassociates.com

1224 Randolph Street – Detroit, Michigan

Retail For Sale or Lease

6,300
Square Feet
AVAILABLE



For more information, please contact:

PETER VANDERKAAY

(248) 359 3837

pvanderkaay@signatureassociates.com

BRUCE BAJA

(248) 799 3177

bbaja@signatureassociates.com

SIGNATURE ASSOCIATES

One Towne Square, Suite 1200

Southfield, MI 48076

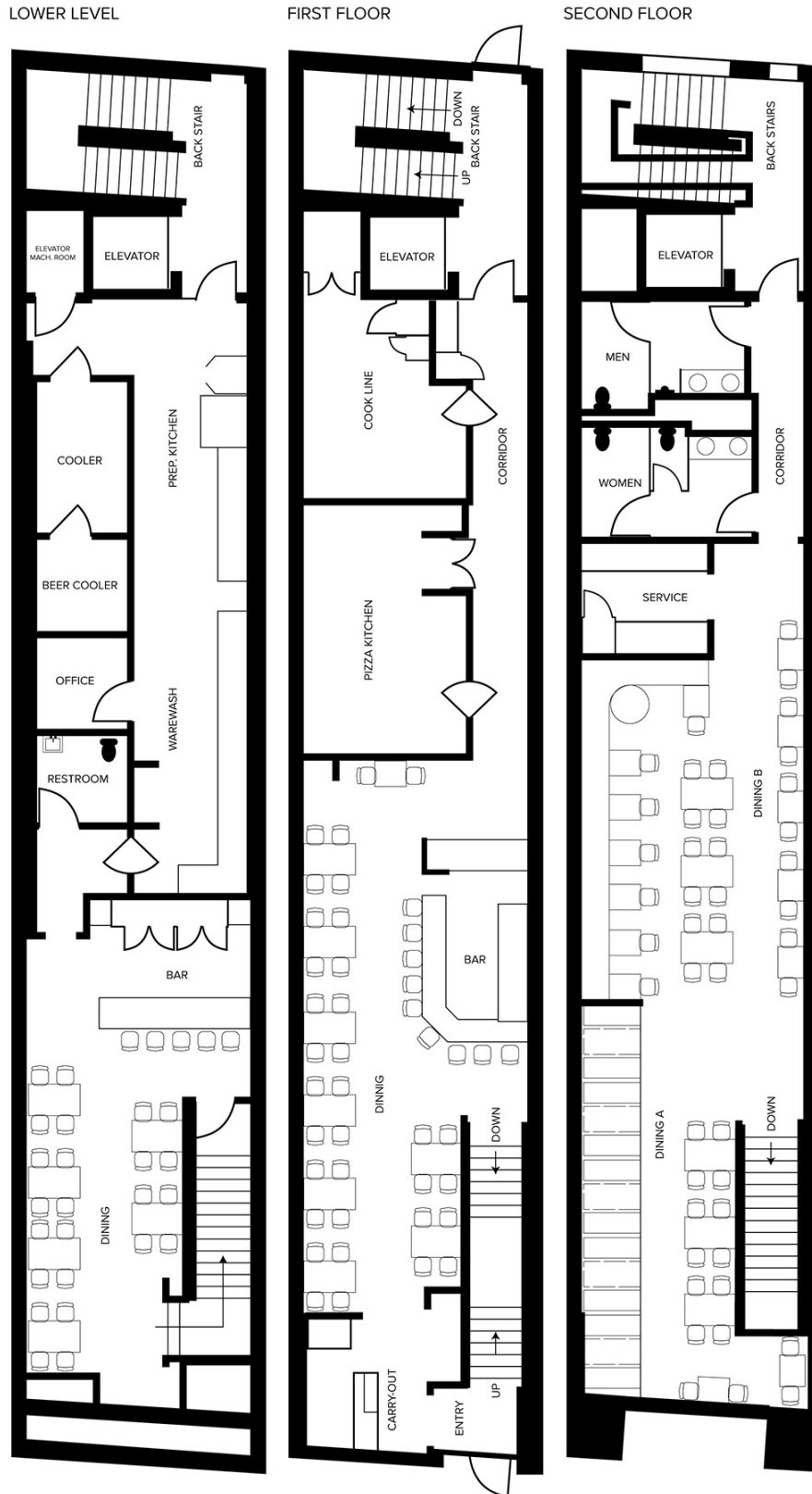
www.signatureassociates.com

1224 Randolph Street – Detroit, Michigan

Retail For Sale or Lease

6,300
Square Feet
AVAILABLE

Floor Plan



For more information, please contact:

PETER VANDERKAAY
(248) 359 3837
pvanderkaay@signatureassociates.com

BRUCE BAJA
(248) 799 3177
bbaja@signatureassociates.com

SIGNATURE ASSOCIATES
One Towne Square, Suite 1200
Southfield, MI 48076
www.signatureassociates.com

1224 Randolph Street – Detroit, Michigan

Retail For Sale or Lease

**6,300
Square Feet
AVAILABLE**



DEMOGRAPHICS

	POPULATION	MED. HH INCOME
1 MILE	17,384	\$58,787
3 MILE	76,460	\$48,463
5 MILE	210,501	\$45,428

TRAFFIC COUNTS (TWO-WAY)

7,474	Randolph St. S. of Gratiot Ave.
6,192	Broadway St. N. of Gratiot Ave.
10,172	Gratiot Ave. N. of Randolph St.
4,973	Gratiot Ave. SW of Randolph St.



For more information, please contact:

PETER VANDERKAAY
(248) 359 3837
pvanderkaay@signatureassociates.com

BRUCE BAJA
(248) 799 3177
bbaja@signatureassociates.com

SIGNATURE ASSOCIATES
One Towne Square, Suite 1200
Southfield, MI 48076
www.signatureassociates.com