

Property Description

+/- 20 acres of raw land in the Keowee community of Salem SC. Near established residential development and burgeoning lake adjacent commercial.

Property Highlights

- Prime location in Salem, SC
- Large parcel of land
- Versatile zoning options
- Scenic natural surroundings
- Proximity to major highways
- Potential for various land uses
- Investment or owner opportunity
- Ample space for expansion
- Diverse investment possibilities

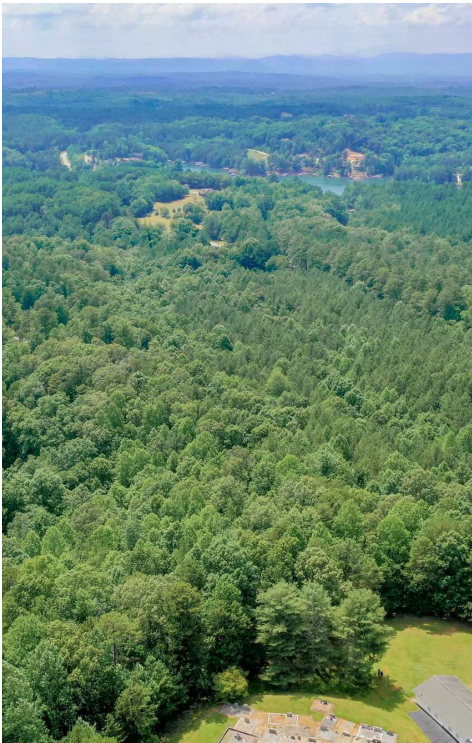
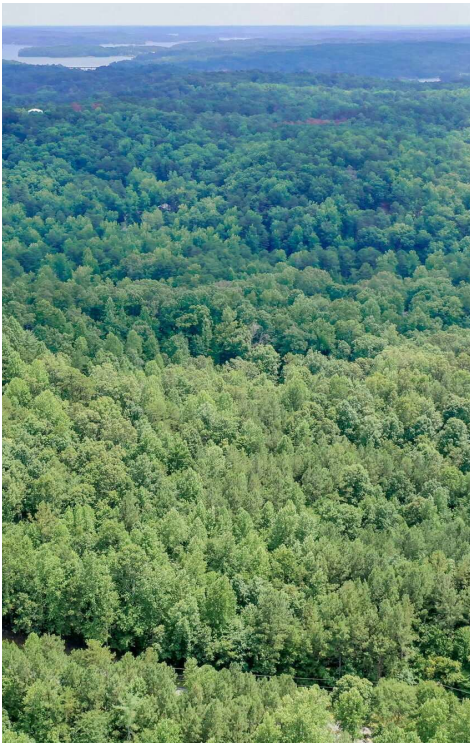
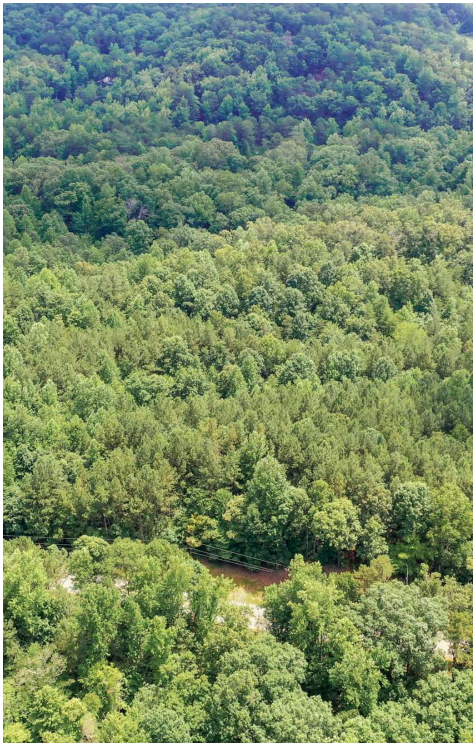
Offering Summary

Sale Price:	\$25,000 / acre
Lot Size:	20.95 Acres

Demographics	1.5 Miles	3.5 Miles	7 Miles
Total Households	1,185	2,467	8,156
Total Population	2,290	4,994	18,481
Average HH Income	\$131,832	\$124,586	\$101,504

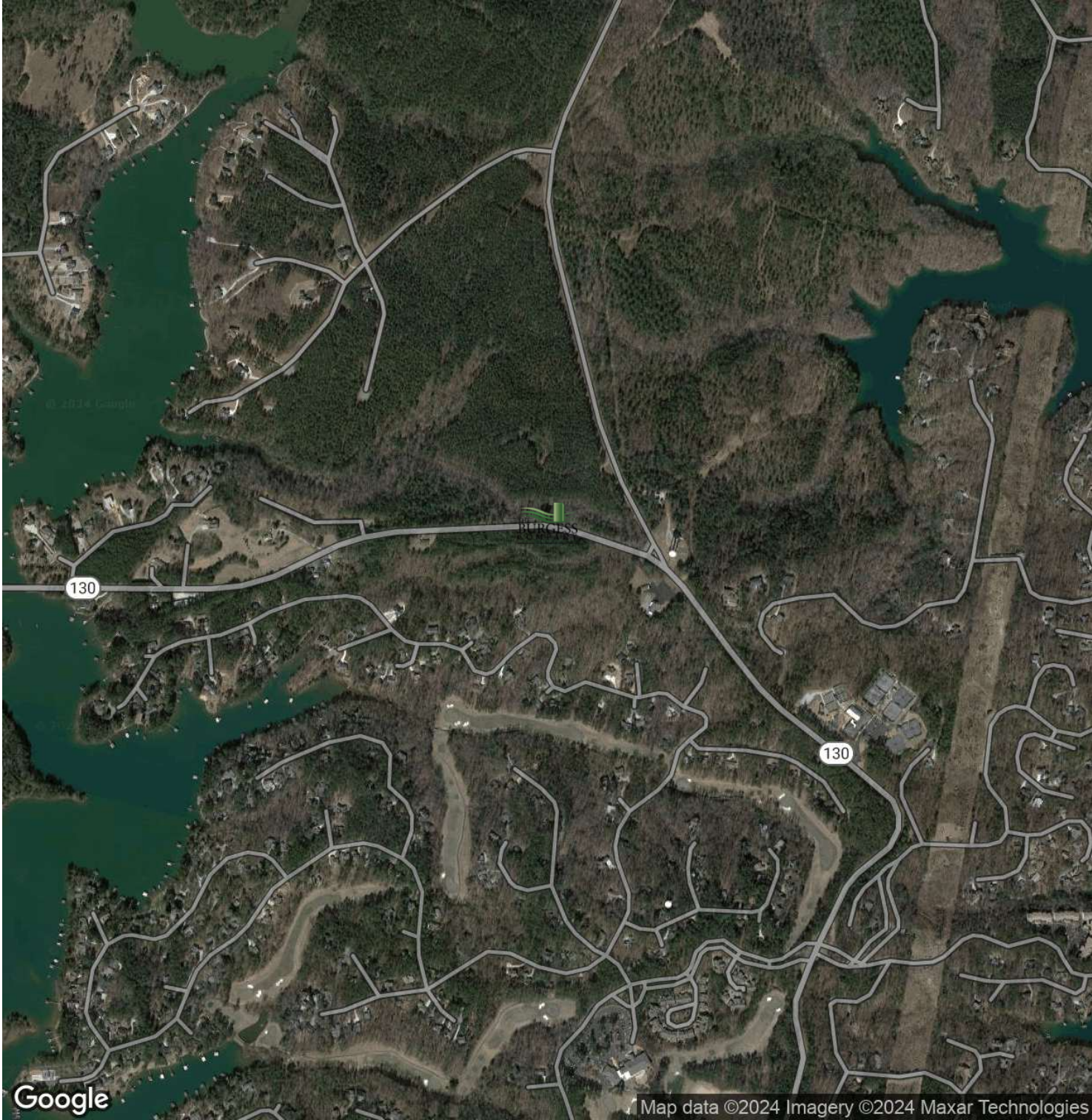
James Jayroe
 Associate Broker
 803.924.6233
 james@tbccre.com





James Jayroe
Associate Broker
803.924.6233
james@tbccre.com

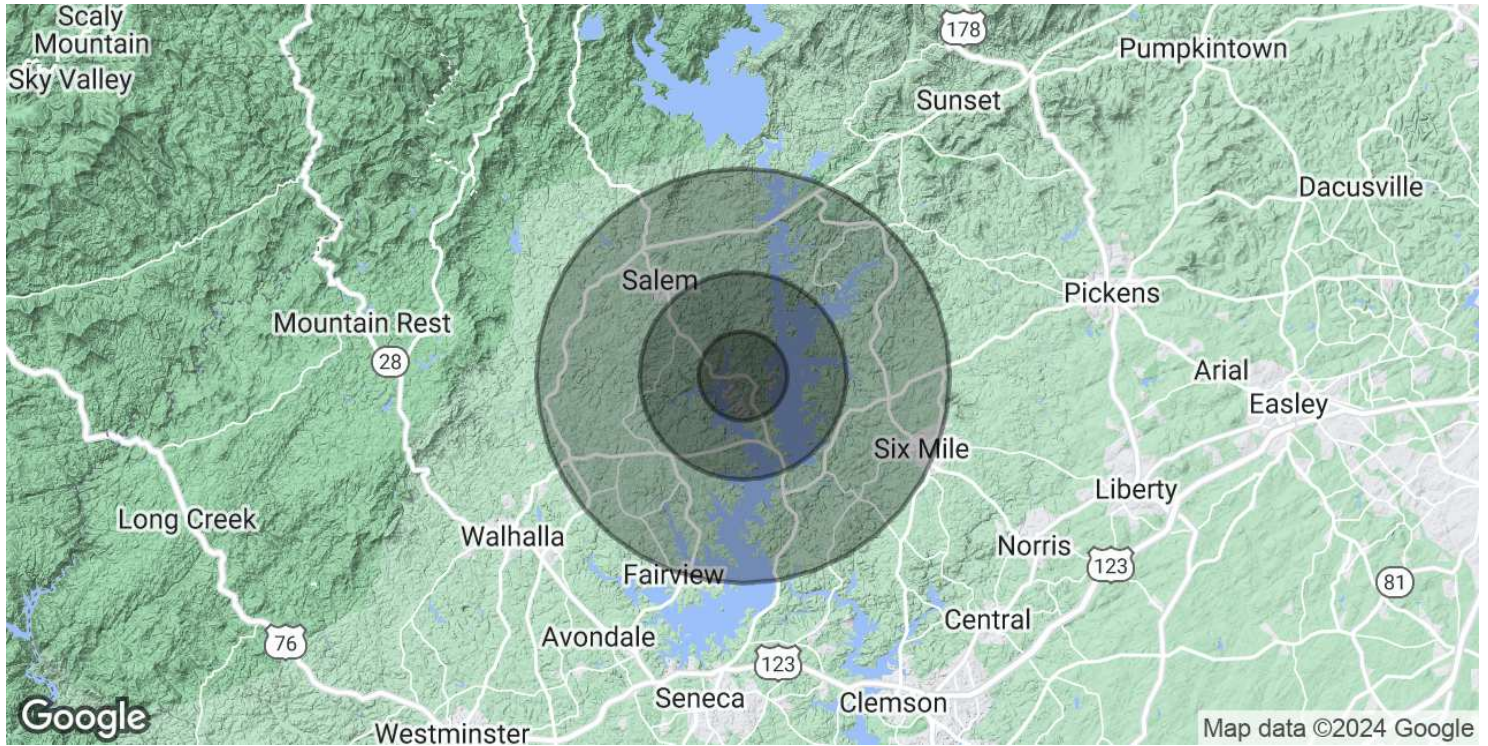




James Jayroe
Associate Broker
803.924.6233
james@tbccre.com



The information contained herein has been given to us by the owner of the property or other sources we deem reliable. We have no reason to doubt its accuracy, but we do not guarantee it. All information should be verified prior to purchase or lease.



Population	1.5 Miles	3.5 Miles	7 Miles
Total Population	2,290	4,994	18,481
Average Age	66	61	51
Average Age (Male)	66	61	50
Average Age (Female)	66	61	52

Households & Income	1.5 Miles	3.5 Miles	7 Miles
Total Households	1,185	2,467	8,156
# of Persons per HH	1.9	2	2.3
Average HH Income	\$131,832	\$124,586	\$101,504
Average House Value	\$747,923	\$671,299	\$532,003

Demographics data derived from AlphaMap

James Jayroe
 Associate Broker
 803.924.6233
 james@tbccre.com

