



VIEWES OF:

SPEC SUITES:

1050: 2,500 RSF

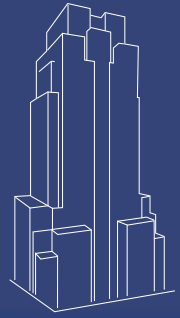
1060: 1,978 RSF

1400: 4,521 RSF

CONFERENCE CENTER

FITNESS CENTER

LOBBY



**PARK
TOWER**

a **KBS** property

An Iconic Destination *for Success*


 980 9th Street, Sacramento, California

In the heart of the State Capitol is Park Tower, a Class A office meticulously designed for the discerning. Find yourself working in one of the premier downtown buildings within walking distance to the State Capitol, County Court House and City Hall.

NEWMARK

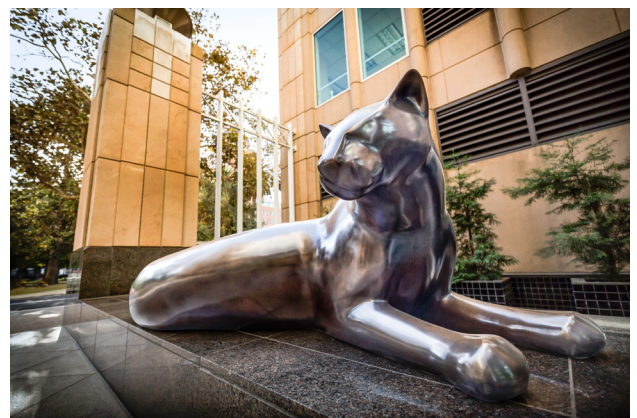
KBS

An Iconic Destination for Success

 980 9th Street, Sacramento, California



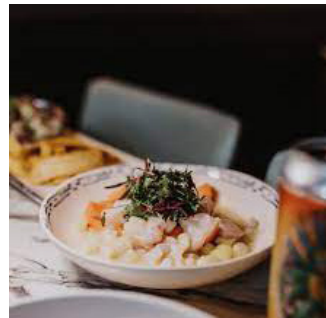
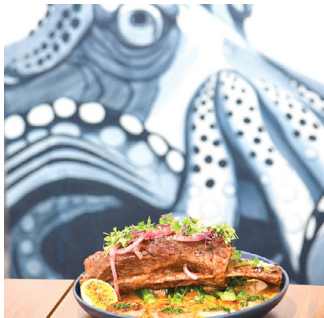
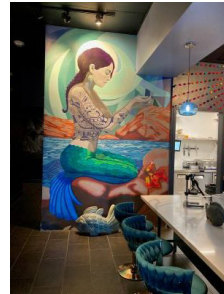
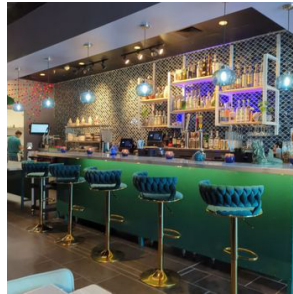
- ±457,406 RSF premier LEED Gold, award winning, Class A high-rise
- On-site property management, building engineers, day porter and 24/7 security, fiber optics connectivity and spa
- One block from light rail, half block to bus stop and four blocks from Amtrak station
- Two well established Restaurateurs offering breakfast, lunch, and dinner occupying over 6,000 SF on the ground floor
- 800 building parking spaces - one level of subterranean parking and seven levels of tenant/visitor parking (additional parking garages one block away at 1010 8th Street or 716 J Street)
- ±1,632 SF on-site, state-of-the-art conferencing center and kitchen
- On-site tenant lounge equipped with television, WiFi, refrigerator, work spaces, lounge areas and more, giving the property a modern live/work/play atmosphere
- ±3,614 SF on-site fitness center, showers and lockers
- Complimentary building shuttle service
- Walking distance to numerous downtown amenities (DOCO, The Kay)
- A City park at the door steps offering seasonal Friday night concerts, farmer markets and more



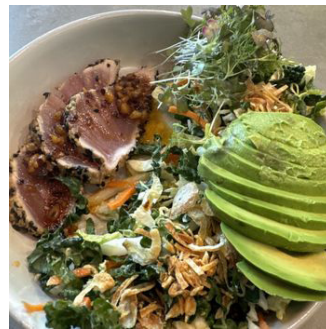
BUILDING ADDRESS:	980 9th Street, Sacramento, California
OWNER:	KBS
YEAR BUILT/RENOVATED:	1992
BUILDING SIZE:	±457,406 rentable square feet
WALK SCORE:	95-100
BUILDING HOURS:	Monday - Friday: 7:00 a.m. - 6:00 p.m. Saturday: 8:00 a.m. - 1:00 p.m.
PARKING:	980 9th St.: 800 parking stalls 1010 8th St.: 357 parking stall Total: 1,157 parking stalls Above market parking of 2.4/1,000 SF
TELECOMMUNICATIONS:	AT&T Fiber & Copper CCI Fiber Comcast Coax Verizon Fiber Telepacific or TPX CenturyLink Fiber

Now Open!

📍 980 9th Street, Sacramento, California



Flora & Fauna



Availabilities

980 9th Street, Sacramento, California

FLOOR	DOWNLOAD	SUITE	RSF
3RD	↓	380*	5,208 RSF
3RD	↓	390*	3,756 RSF
4TH	↓	400*	4,194 RSF
4TH	↓	420*	2,396 RSF
4TH	↓	430	7,149 RSF
4TH	↓	480*	12,898 RSF
8TH	↓	8th Floor	23,210 RSF
9TH	↓	9th Floor	15,911 RSF
10TH	↓	1050* Move in Ready Suite	2,500 RSF
10TH	↓	1060* Move in Ready Suite	1,978 RSF
11TH	↓	11th Floor	17,274 RSF
14TH	↓	1400 Move in Ready Suite	4,521 RSF
15TH	↓	15th Floor	16,650 RSF
16TH	↓	16th Floor	17,066 RSF
17TH	↓	1700*	4,762 RSF
17TH	↓	1730*	1,842 RSF
17TH	↓	1750*	2,678 RSF
17TH	↓	1770*	5,146 RSF
17TH	↓	1780*	3,313 RSF
18TH	↓	18th Floor	17,065 RSF
20TH	↓	2060	2,462 RSF
21ST	↓	2100*	2,390 RSF
21ST	↓	2120*	1,525 RSF
21ST	↓	2130*	1,393 RSF
21ST	↓	2150*	5,749 SF
21ST	↓	2180*	1,570 RSF
21ST	↓	2190*	1,139 RSF



* Can be combined

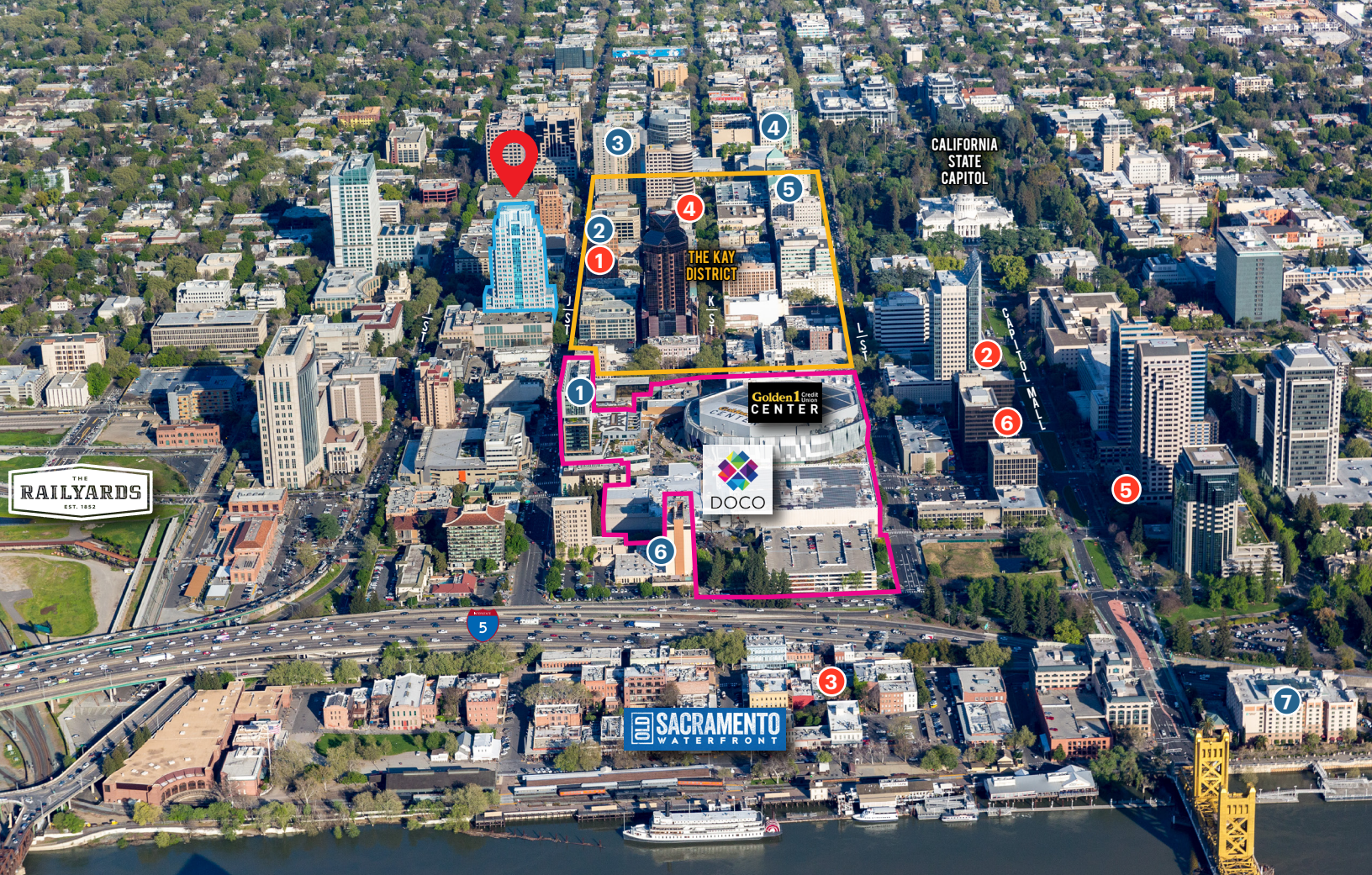


AMENITIES
*Designed
 for work
 and
 after work*

Park Tower is one of the most recognizable buildings in Downtown Sacramento and the jewel of the J Street Corridor. It commands the eye with its iconic structure and grand entrance. This Class A office property offers upscale business environments and an enviable suite of amenities to satisfy the most discerning of companies.

PRODUCTIVITY	LIFESTYLE
In-Place Fiber Optics	Fitness Center
Conference Rooms	Tenant Lounge
On-Site Management	Spa
On-Site Storage	
Shuttle	
Bike Storage	
TRAVEL & TRANSPORT	SUSTAINABILITY FEATURES
Near Light Rail and RT Bus Service	 
Near Sacramento International Airport	
Near Restaurants and Bars	
Surrounded by Multi-Tenant Housing	
	LEED® registered Energy Star® Gold

NEWMARK



Go from *work to play* in minutes

📍 980 9th Street
Sacramento, California

● DOCO - DOWNTOWN COMMONS

PLAY

Golden 1 Center
Century Theatres
24 Hour Fitness
Impound
Punch Bowl Social
Revival at the Sawyer
Tom's Watch Bar
Tru

SHOP

Capital Agenda
Lids/Kings Locker Room
Lucky Gold
Macy's
Phenom
Sacramento Kings Team Store
Select
The Lash Lounge
Urban Outfitters

DINE

Burger Lounge

Cabana Club

Cakes by Jeff the Chef
Chipotle
Echo & Rig
Estelle's Bakery & Pâtisserie
Fizz Champagne & Bubbles Bar
Häagen-Dazs
Insomnia Cookies
It'Sugar
Jamba Juice
Jimboy's Tacos
Panda Express
Poke Ichii
Polanco Cantina
Pressed Juicery
Punch Bowl Social
RareTea
Revival
Sauced BBQ & Spirits
World Traveler Coffee Roasters
Yard House

● THE KAY DISTRICT

DINE

Kodaiko Ramen & Bar
Tiger Bar & Restaurant
Malt & Mash Irish Pub
Koja Kitchen
Pete's 7
Taco Bell Cantina
Frank Fat's
Empress Tavern
Crest Cafe
Oishii Sushi
The Boiling Crab
Mayahuel
Brasserie Capitale
Upper Crust Pizza
and more....

● HOTELS

1. Kimpton Sawyer Hotel
2. The Citizen Hotel
3. Sheraton Grand Hotel
4. Residence Inn by Marriott
5. Hyatt Regency
6. Holiday Inn Sacramento
7. Embassy Suites

● FINE DINING OPTIONS

1. Grange Restaurant
2. Morton's Steak House
3. Firehouse
4. Ella Dining Room & Bar
5. Il Fornaio
6. Camden Spit & Larder
7. Brasserie du Monde



For leasing information, please contact:

CHRIS LEMMON
916-367-2323
chris.lemmon@nmrk.com
CA RE Lic# 01506816

LUCAS LUGO
916-569-2322
lucas.luco@nmrk.com
CA RE Lic# 01916673

MIKE RILEY
916-569-2329
mike.riley@nmrk.com
CA RE Lic# 00955165

NEWMARK

The distributor of this communication is performing acts for which a real estate license is required. The information contained herein has been obtained from sources deemed reliable but has not been verified and no guarantee, warranty or representation, either express or implied, is made with respect to such information. Terms of sale or lease and availability are subject to change or withdrawal without notice. NMRK-NWMKTG 2024* 11/2024