



LEASE

Industrial Building with Outdoor Storage

37W309 KESLINGER RD

Geneva, IL 60134

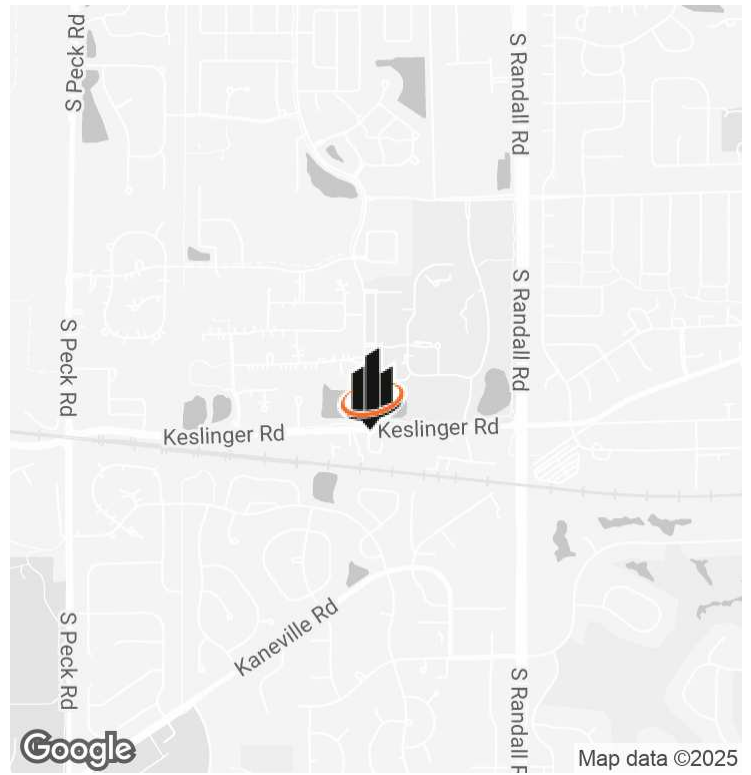
PRESENTED BY:

BRIAN LINDGREN

O: 630.938.4950

brian.lindgren@svn.com

FOR LEASE: 37W309 KESLINGER RD GENEVA IL 60134



OFFERING SUMMARY

LEASE RATE:	\$10,500.00 per month (MG)
AVAILABLE SF:	9,000 SF
LOT SIZE:	2 Acres
BUILDING SIZE:	12,000 SF
OFFICE SIZE:	+/- 2,000 SF
CEILING HEIGHT:	14' clear
DRIVE-IN DOORS:	(2) 10'x12'
DOCK:	(1) 10'x10'

PROPERTY DESCRIPTION

FOR LEASE: 9,000sf warehouse space with +/- 1-acre yard in unincorporated Kane County. Graveled lot for outdoor storage or truck parking. (2) drive-in doors and (1) loading dock. Dock has been filled in with gravel for grade level access but could be excavated.

Can be combined with another 0.55 acres of truck parking down the street at 37W459 Keslinger Rd for an additional \$3,000 per month.

PROPERTY HIGHLIGHTS

- 9,000sf warehouse space
- +/- 1-acre Outdoor Storage / Truck Parking
- Can be combined with additional 0.55 acres of truck parking down the street

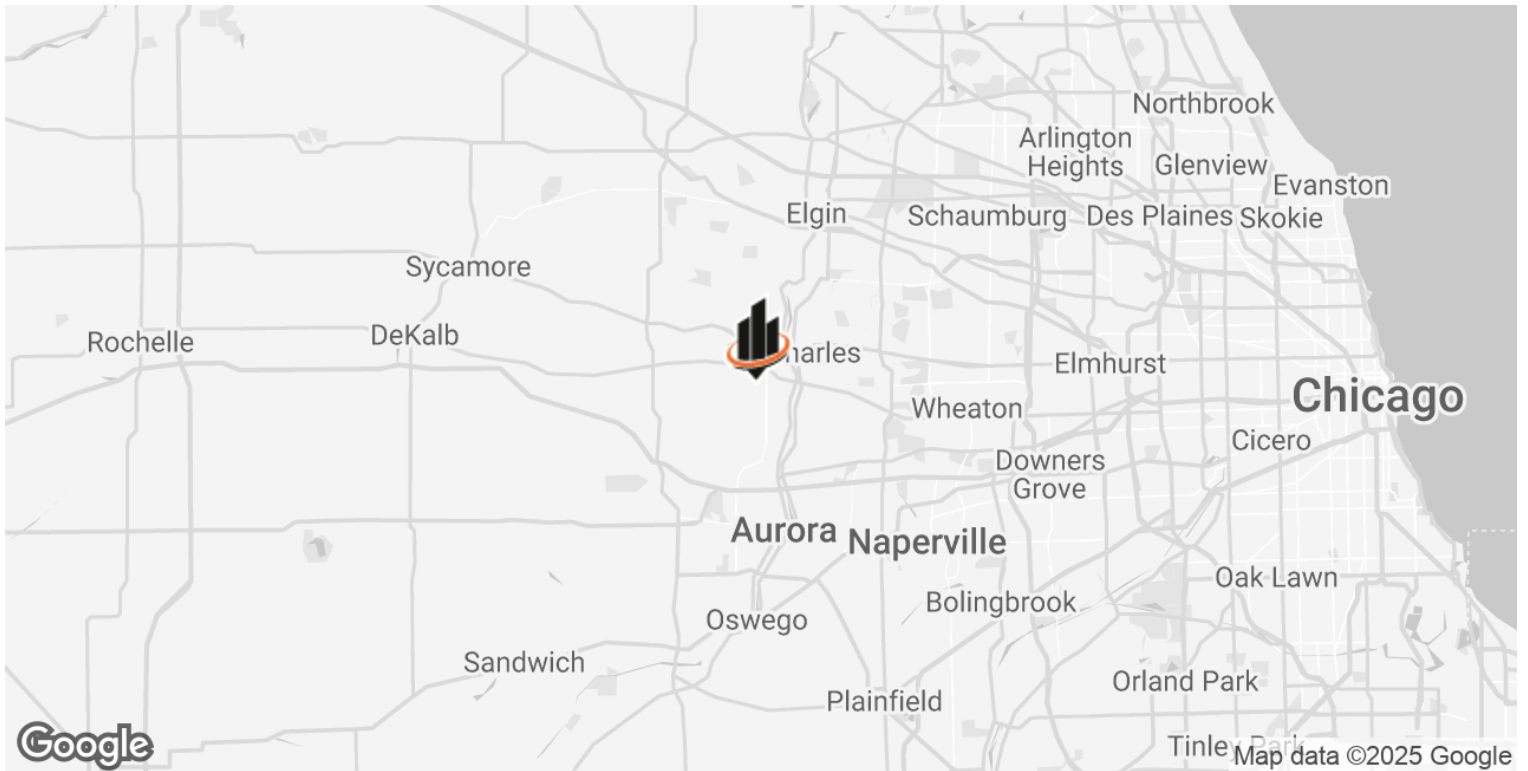
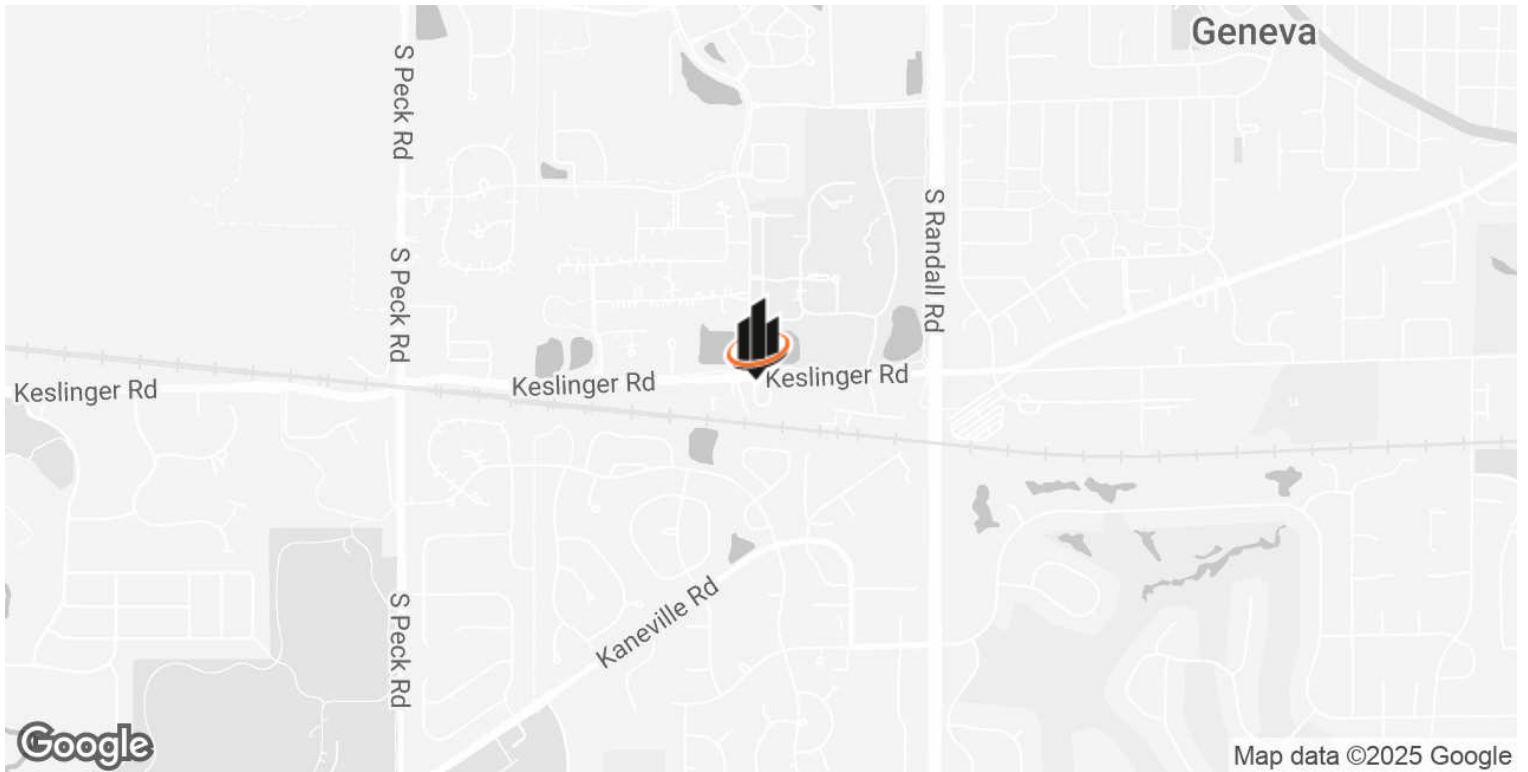
BRIAN LINDGREN
O: 630.938.4950
brian.lindgren@svn.com

AERIAL



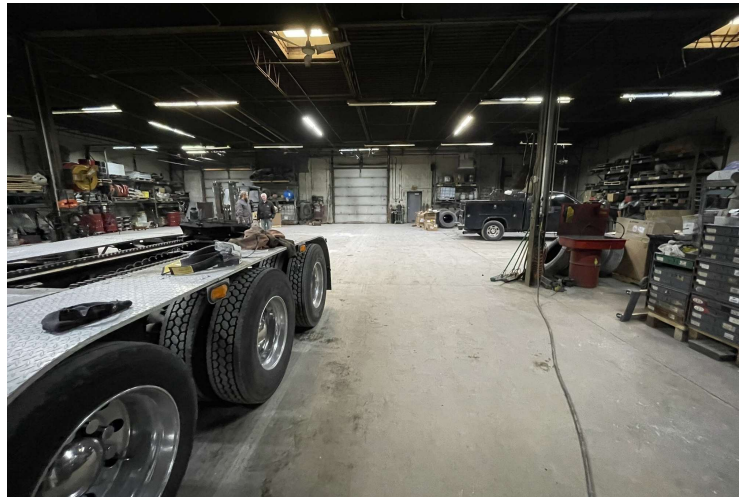
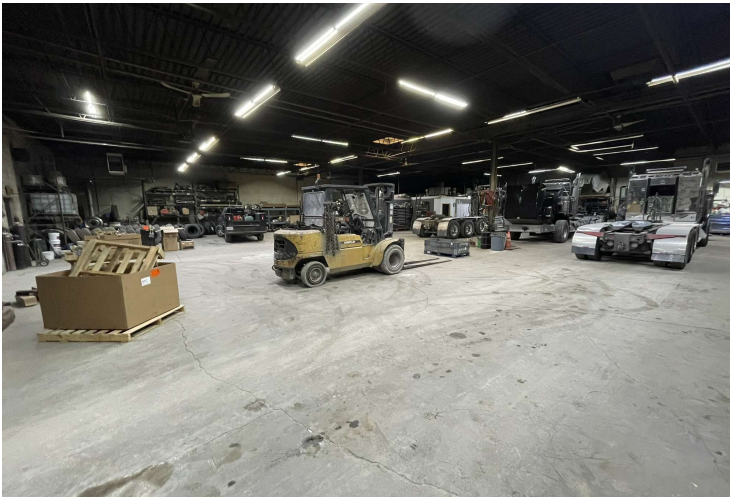
BRIAN LINDGREN
O: 630.938.4950
brian.lindgren@svn.com

LOCATION MAPS



BRIAN LINDGREN
O: 630.938.4950
brian.lindgren@svn.com

PHOTOS



BRIAN LINDGREN
O: 630.938.4950
brian.lindgren@svn.com