

For Lease / Laurel Place One  
Immediate Availability



## 14405 Laurel Place

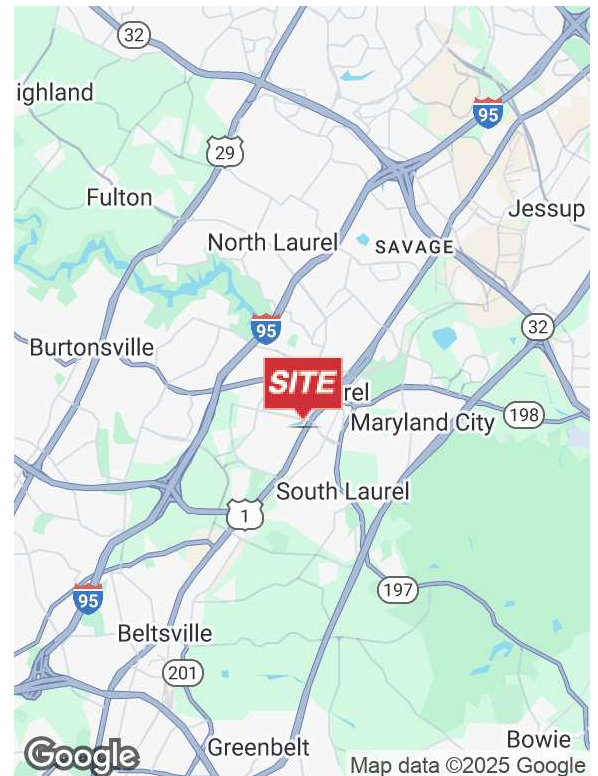
Laurel, Maryland 20707

### Property Description

- 846 SF to 6,436 SF
- Full Service rental rates
- Excellent free surface parking
- 24-hour access
- High speed internet
- One block from Laurel Towne Centre (New Mall)
- Restaurants: Silver Diner, Panera, Mission BBQ, Buffalo Wild Wings and many more within walking distance
- Nearby Hotels: Holiday Inn Express within walking distance, Fairfield Inn by Marriott

### Location Overview

- Route 1 frontage
- Near NSA and Fort Meade
- Easy access to I-95, Intercounty Connector and Baltimore-Washington Parkway
- Centrally located between Baltimore/DC



**Allen Cornell**

O: 301 918 2909  
acornell@naimichael.com

**Joseph Palermo**

O: 301 918 2916  
jpalermo@naimichael.com



10100 Business Pkwy  
Lanham, MD 20706  
301 459 4400 tel  
[www.naimichael.com](http://www.naimichael.com)



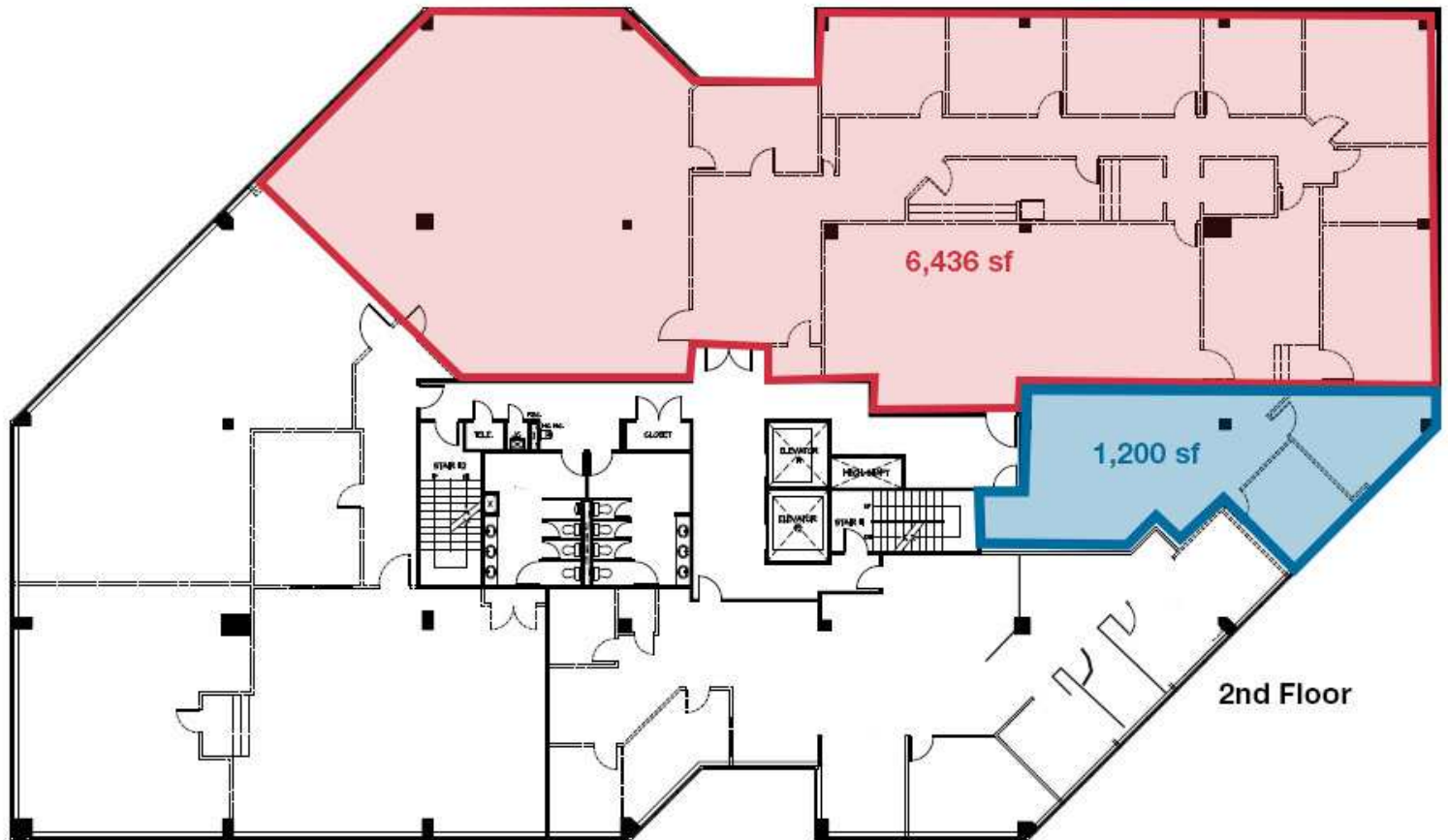
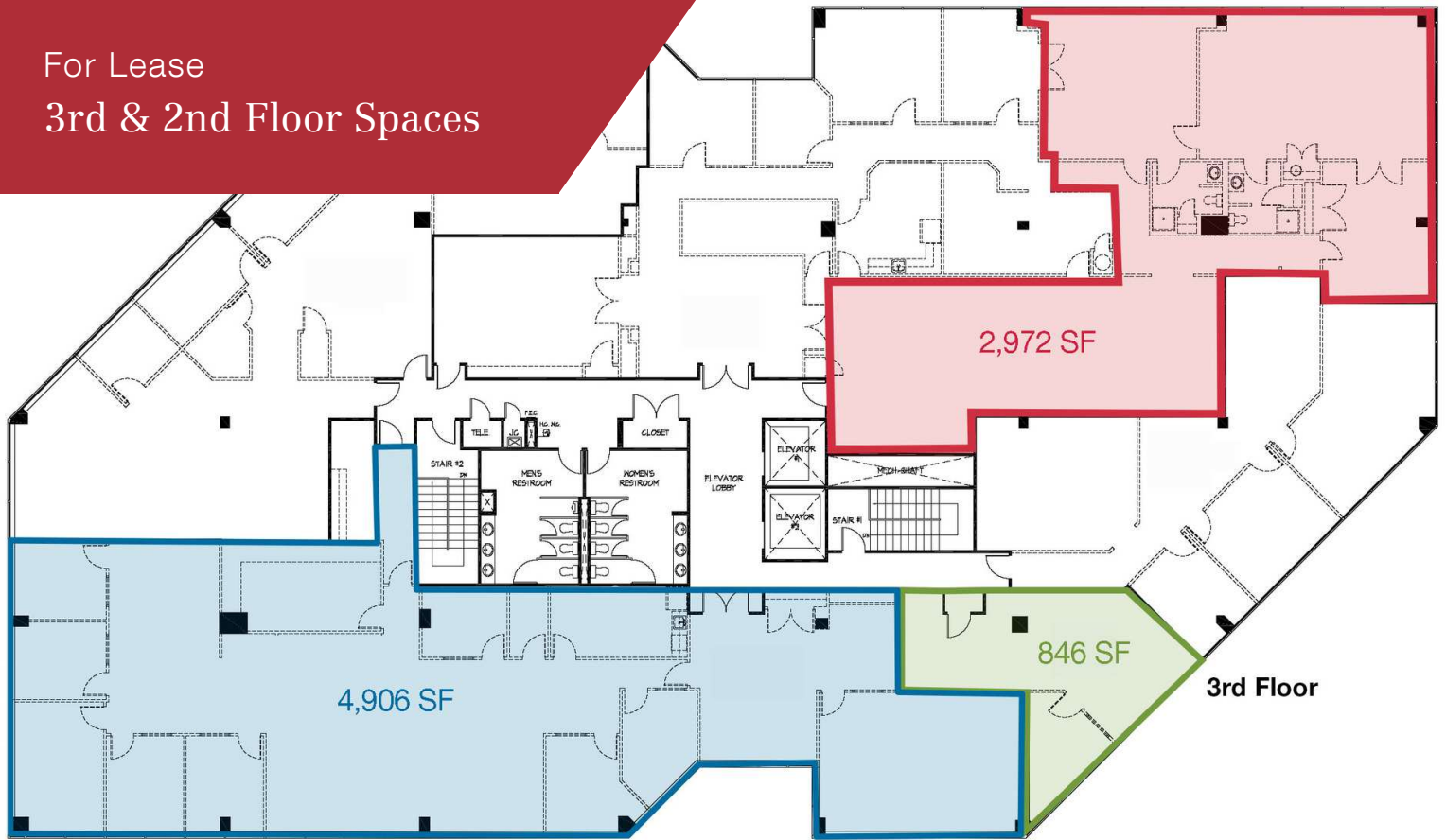
For Lease  
Laurel Place One

# Laurel Towne Centre





For Lease  
3rd & 2nd Floor Spaces





For Lease  
Laurel, MD

14405  
Laurel Place

