
2100 SWIFT DRIVE OAK BROOK, ILLINOIS

Up to 58,010 SF Office Space Available





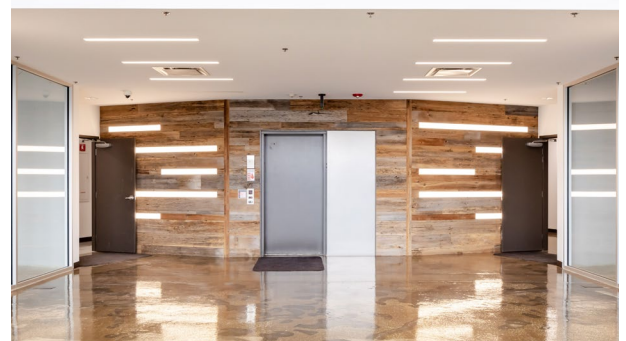
**2100 SWIFT DRIVE
OAK BROOK, IL**

3-Story office building with open floor plans

Located within the East-West Corridor

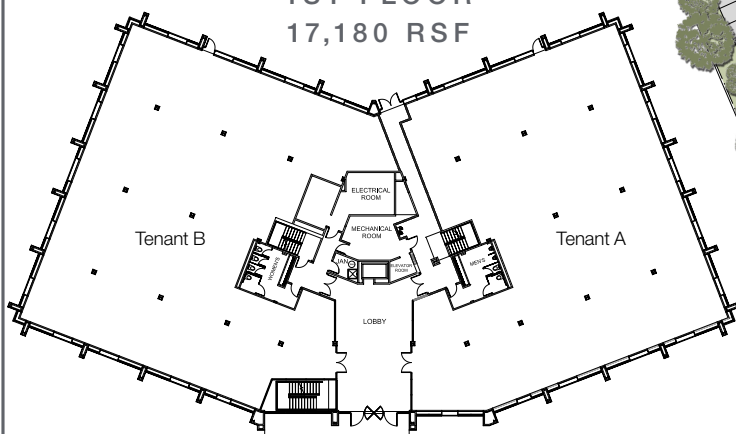
Great exposure on I-88 / I-294 feeder ramps

Near many amenities including Oakbrook Center Mall

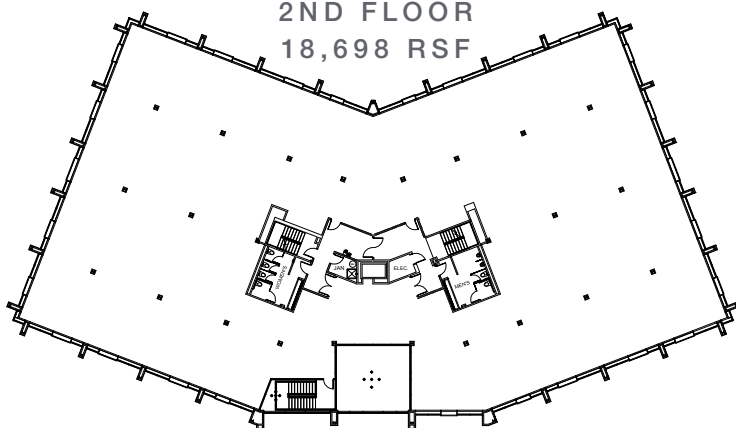


**58,010 SF AVAILABLE
DIVISIBLE TO 17,180 SF**

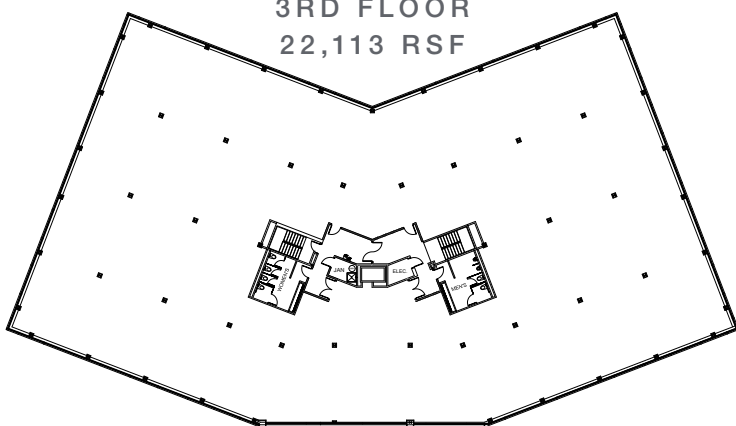
**1ST FLOOR
17,180 RSF**



**2ND FLOOR
18,698 RSF**



**3RD FLOOR
22,113 RSF**



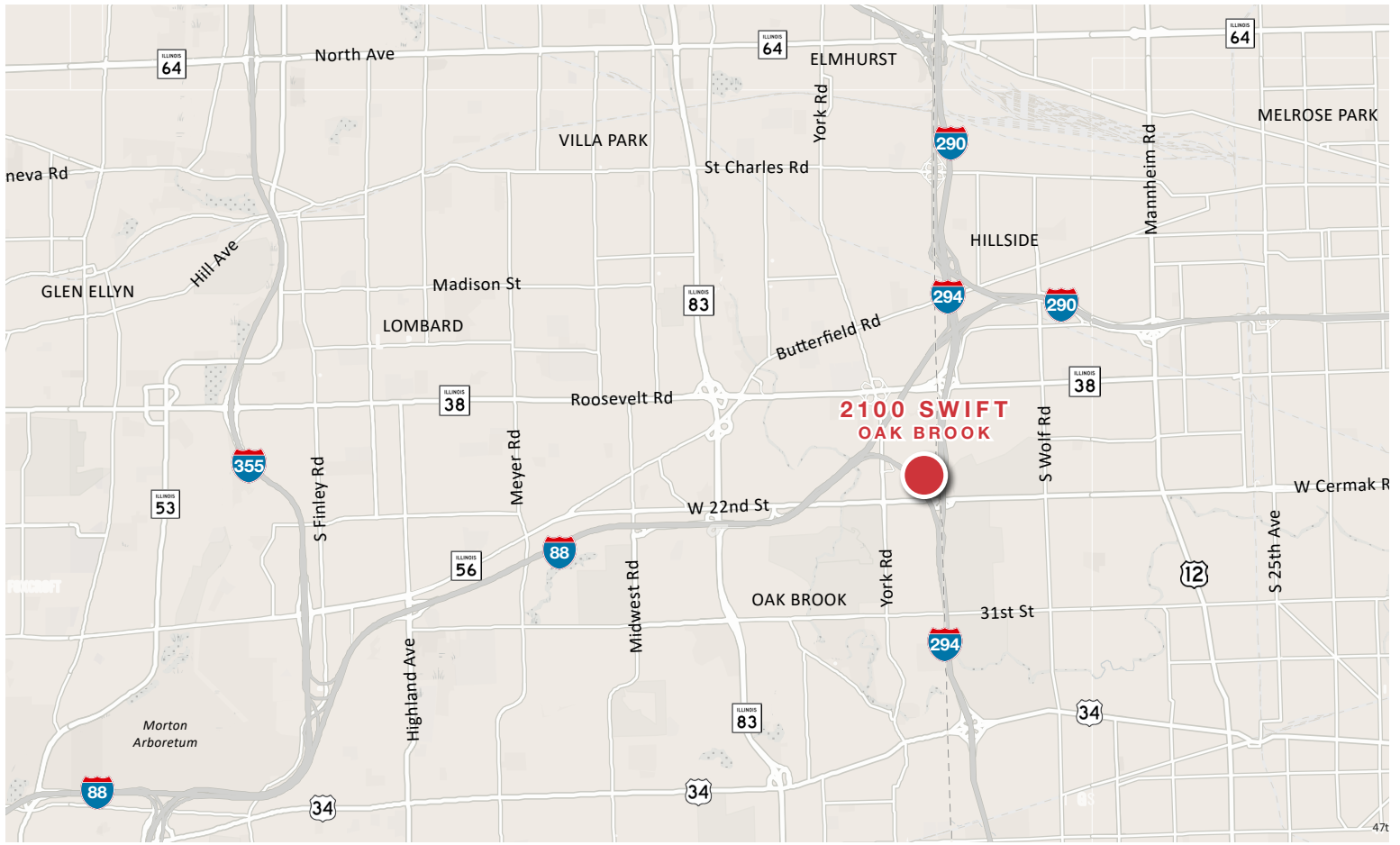
Renovated in 2017 that features a full glass entryway

Parking ratio of 6.1/1,000 includes a 3-story parking deck and surface parking

Dual power with 3-phase service and back-up generator

Building and monument signage opportunities

 **PROPERTY VIDEO**



Contact

Patrick Kiefer
 630 693 0670
 pkiefer@hiffman.com

Dan O'Neill
 630 691 0610
 doneill@hiffman.com



One Oakbrook Terrace
 Suite 400
 Oakbrook Terrace, Illinois 60181
 +1 630 932 1234

NO WARRANTY OR REPRESENTATION, EXPRESS OR IMPLIED, IS MADE AS TO THE ACCURACY OF THE INFORMATION CONTAINED HEREIN, AND THE SAME IS SUBMITTED SUBJECT TO ERRORS, OMISSIONS, CHANGE OF PRICE, RENTAL OR OTHER CONDITIONS, PRIOR SALE, LEASE OR FINANCING, OR WITHDRAWAL WITHOUT NOTICE, AND OF ANY SPECIAL LISTING CONDITIONS IMPOSED BY OUR PRINCIPALS NO WARRANTIES OR REPRESENTATIONS ARE MADE AS TO THE CONDITION OF THE PROPERTY OR ANY HAZARDS CONTAINED THEREIN ARE ANY TO BE IMPLIED.