



# Premium Hillsborough Office For Lease

---

320 EXECUTIVE COURT, HILLSBOROUGH, NC 27278

**Emilee Collins, CCIM**

emilee@pickettsprouse.com

919-730-7040

**Matthew Morton**

matthew@pickettsprouse.com

919-864-0864

**PICKETT  
SPROUSE**

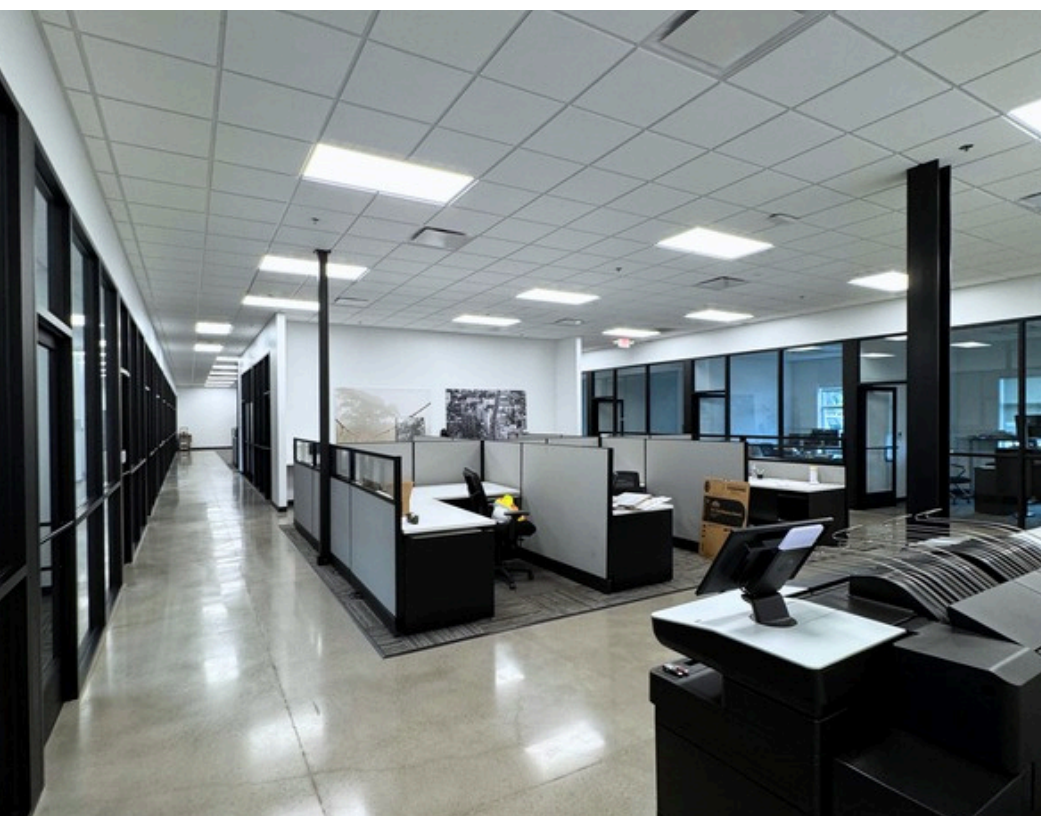
COMMERCIAL  
REAL ESTATE



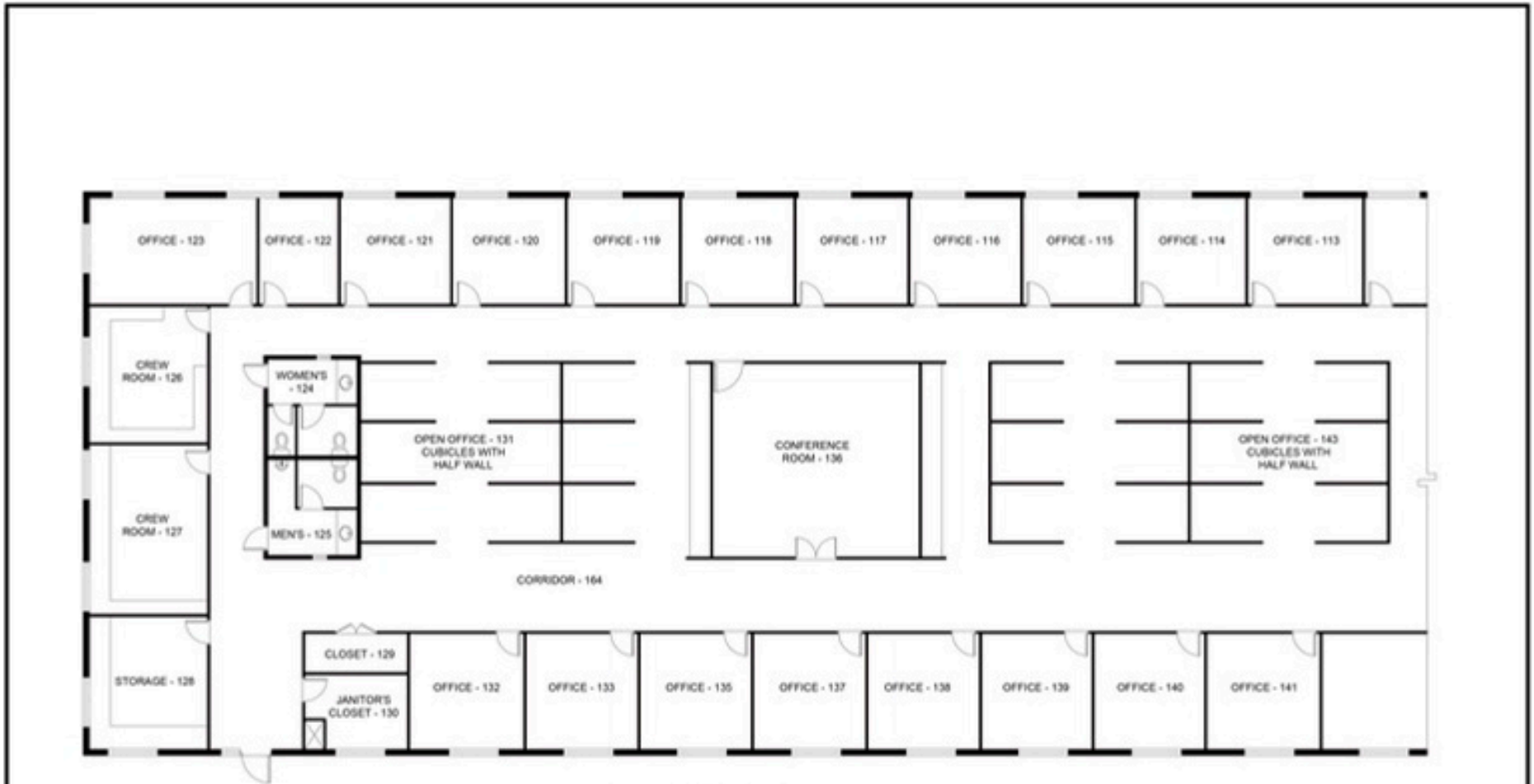
## Professional Office in Orange County

Exceptional 7,970 SF professional office available at 320 Executive Court in Hillsborough. Zoned High Intensity Commercial in Orange County, this well-maintained space offers a private entrance, open office area, 20 private offices, two conference rooms, private restrooms, and abundant storage. The location provides excellent accessibility and visibility for clients and employees alike.

<b>SQUARE FOOTAGE</b>	7,970
<b>COUNTY</b>	Orange
<b>PARCEL NUMBER</b>	9874802287.002
<b>ZONING</b>	High Intensity Commercial (HIC)
<b>LEASE RATE</b>	\$16,845.00/month (includes rent and utilities)
<b>BEST USE</b>	Professional Office



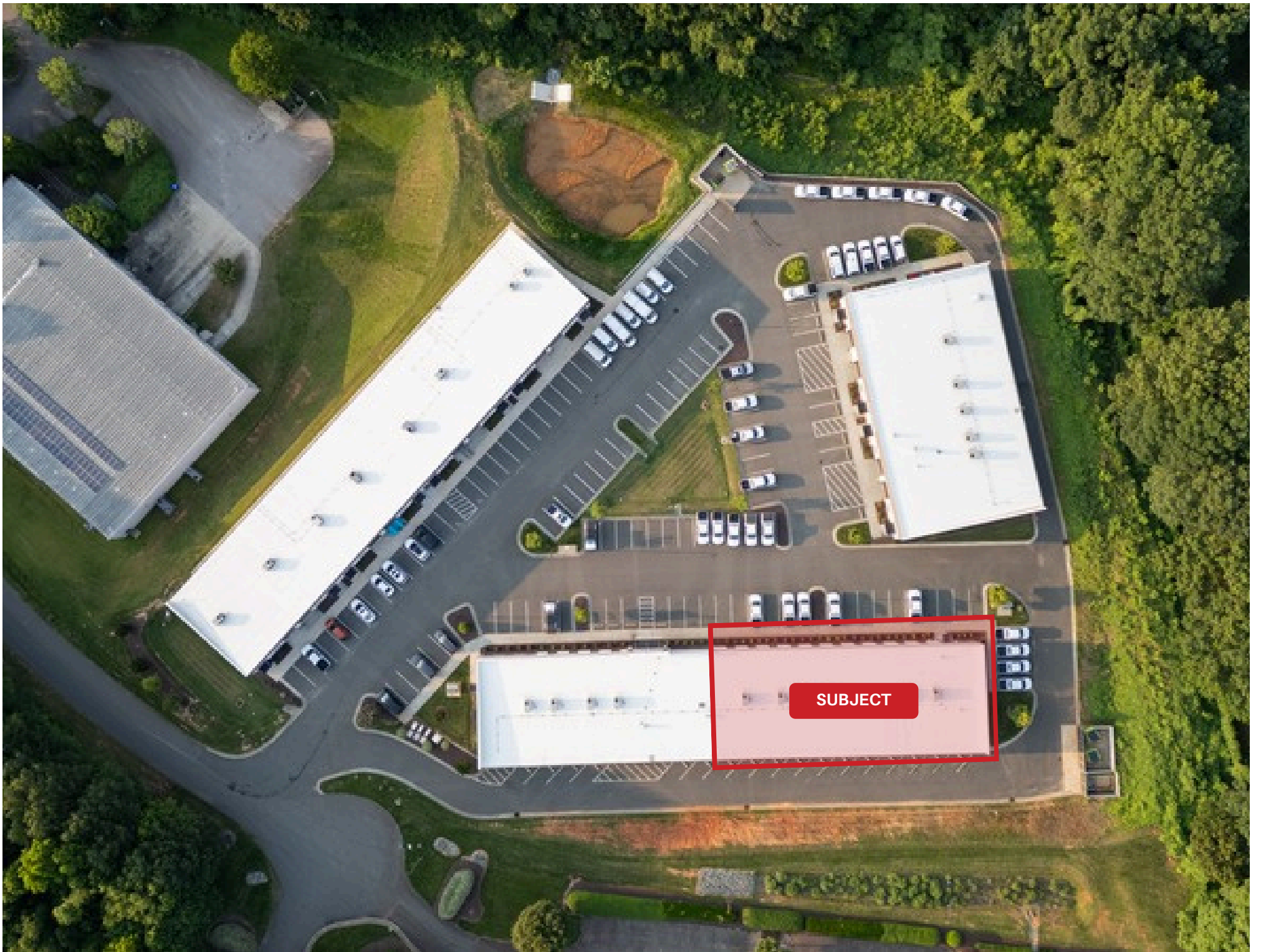
# FLOOR PLAN



## FLOOR PLAN

This floor plan including furniture, fixture measurements and dimensions are approximate and for illustrative purposes only. BoxBrownie.com gives no guarantee, warranty or representation as to the accuracy and layout. All enquiries must be directed to the agent, vendor or party representing this floor plan.

320 Executive Court



**SUBJECT**



RICK ASHBY, STATE FARM INSURANCE

BRIGHT PATH BEHAVIORAL HEALTH

ORANGE COUNTY SPORTSPLEX

PASSMORE SENIOR CENTER

SOLTYS PLACE ADULT DAY HEALTH

UNC

JOE VAN GOUGH ROASTERS

CMA SIGNS

U.S. HWY 70A

HILLSBOROUGH VETERINARY CLINIC

COMPLETE SMILES OF HILLSBOROUGH

THE LAW OFFICE OF DERRICK J. HENSLEY

ENDSWELL FUNERAL HOME

ORANGE COUNTY EMERGENCY SERVICES

SATTERFIELD LAW

ORANGE COUNTY FINANCIAL SERVICES

BARLOW SCIENTIFIC

BIG SPOON ROASTERS

CLEAR TECHNOLOGIES

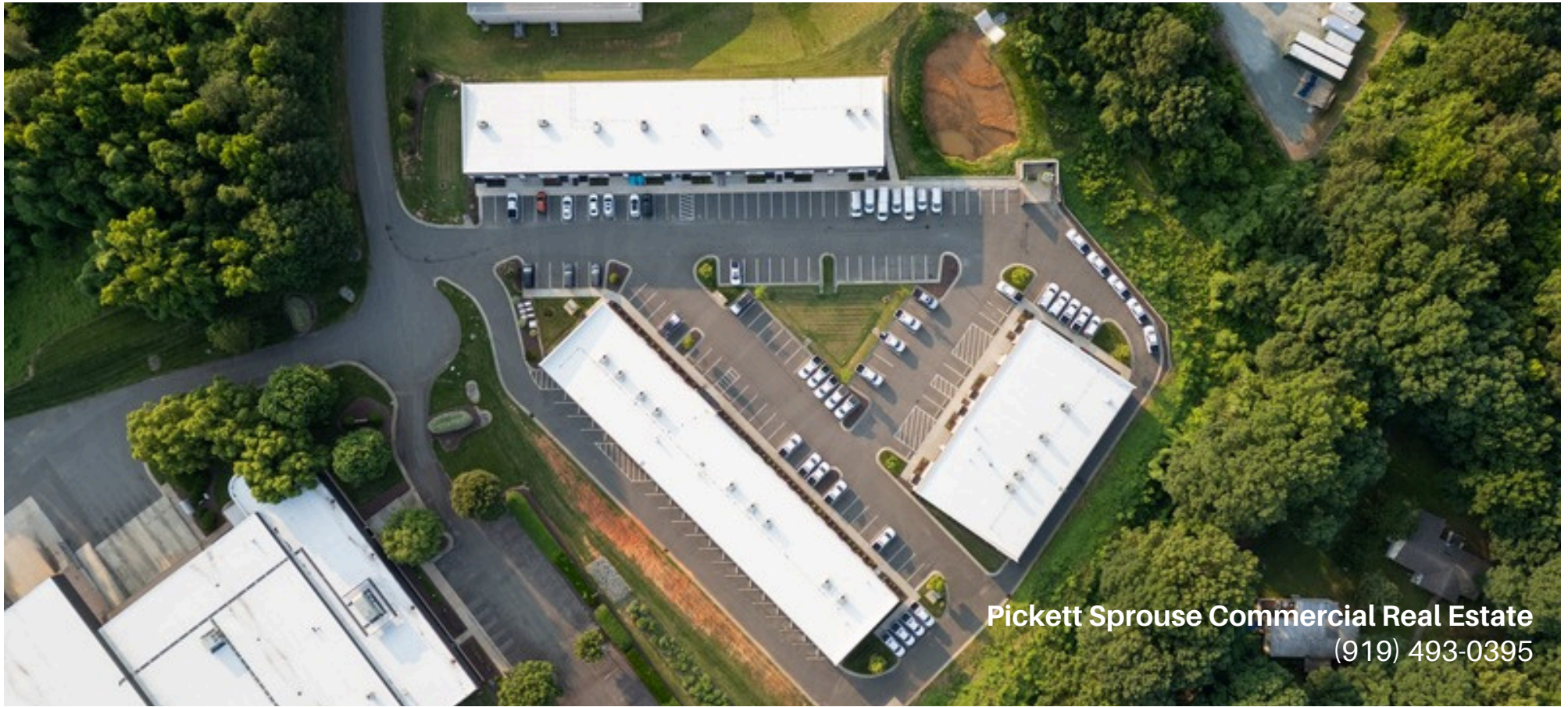
PEAK RESOURCES BROOKSHIRE

PHE

MONARCH MOVEMENT COMPANY

SUBJECT





**Pickett Sprouse Commercial Real Estate**  
(919) 493-0395

# Contact Us

**Emilee Collins, CCIM**  
emilee@pickettsprouse.com  
919-730-7040

**Matthew Morton**  
matthew@pickettsprouse.com  
919-864-0864

[pickettsprouse.com](http://pickettsprouse.com)

