

FOR LEASE

160 Newtown Road  
Virginia Beach, VA 23462



COMMONWEALTH  
COMMERCIAL REAL ESTATE SOLUTIONS



## Property Features

- Recently renovated building with modern and updated exterior and interior finishes
- **First Floor**  
Suite 101: 2,494 RSF
- **Second Floor**  
Suite 205: 4,188 RSF
- **Third Floor**  
Available for full floor user: 15,661 RSF
- **Fourth Floor**  
Suite 403: 1,374 RSF  
Suite 404: 2,148 RSF  
Suite 405: 2,077 RSF  
Suite 406: 1,559 RSF  
*All suites are not yet built out; interior layouts shown are conceptual only.  
Fourth floor suite sizes and configurations can be modified to accommodate tenant requirements.*
- Centrally located with immediate access to I-264 interchange
- Building signage opportunity – Traffic count: I-264 - 200,000± VPD
- 0.3 miles from the Newtown Light Rail Station
- Ample on site surface parking (free)
- Lease rate: \$22.50/RSF, net of janitorial

This document has been prepared for informational purposes only. All information contained herein has been obtained from sources believed to be reliable; however, no representation or warranty, express or implied, is made as to the accuracy or completeness of the information contained herein.

For More Information:

### Noah Reyes

First Vice President

o: 757-377-8580

nreyes@commonwealthcommercial.com

### Gresh Wall

Managing Director of Hampton Roads

o: 757-461-4732

gwall@commonwealthcommercial.com

2101 Parks Avenue, Suite 402  
Virginia Beach, VA 23451

o: 757-333-7174

commonwealthcommercial.com



Renovated Lobby



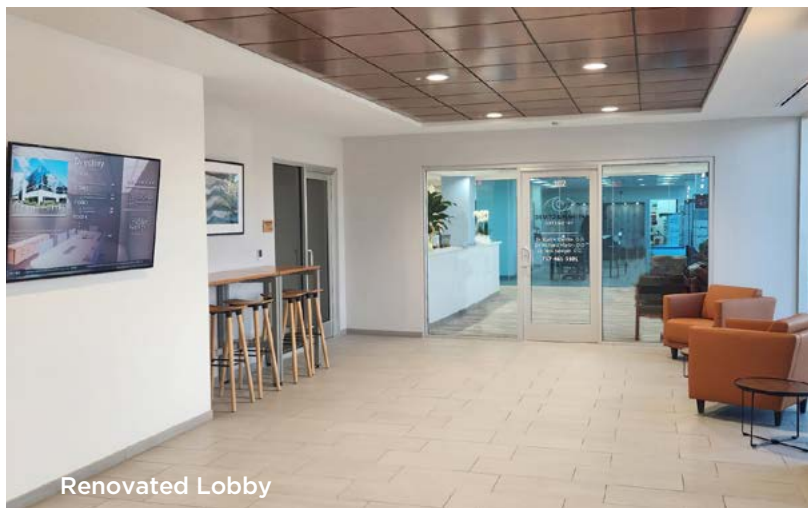
Shared Conference Room



Kitchen



Reception Desks



Renovated Lobby



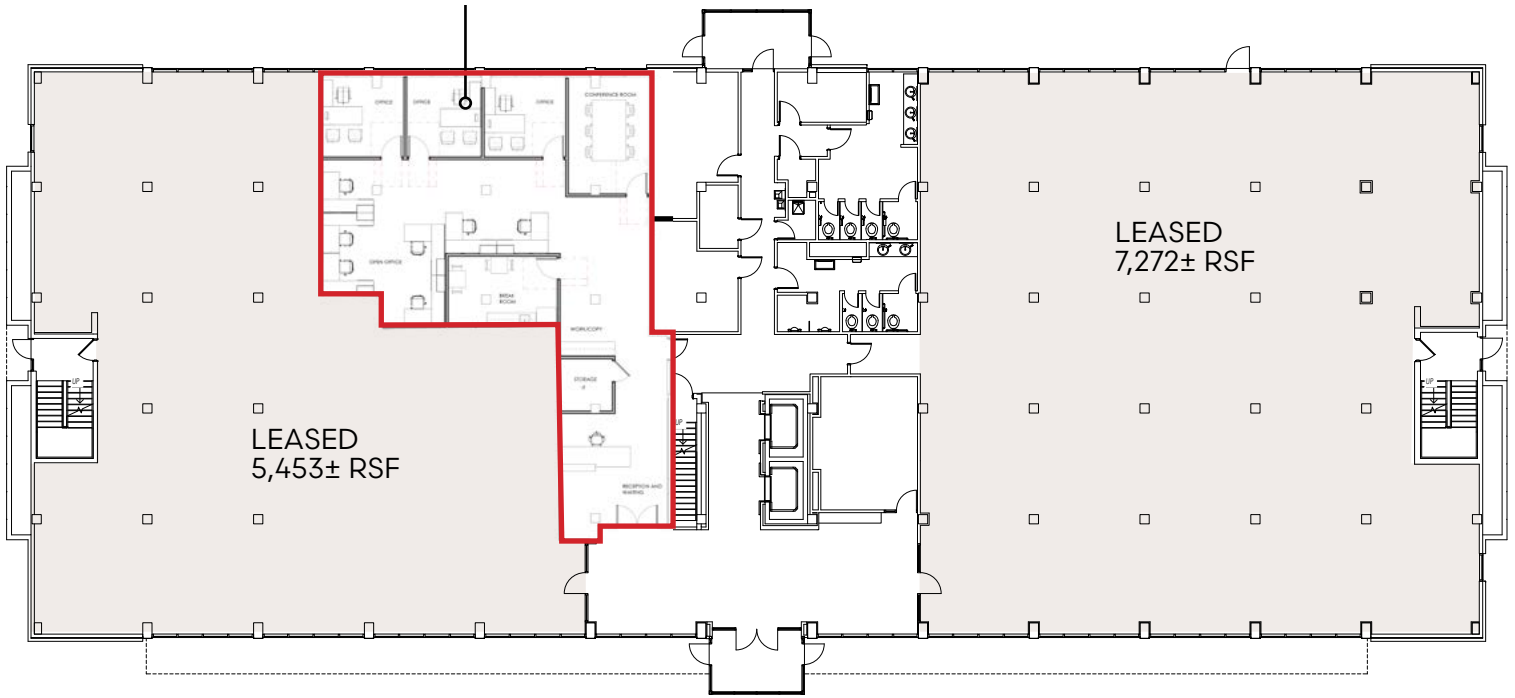
Newly Renovated Restrooms



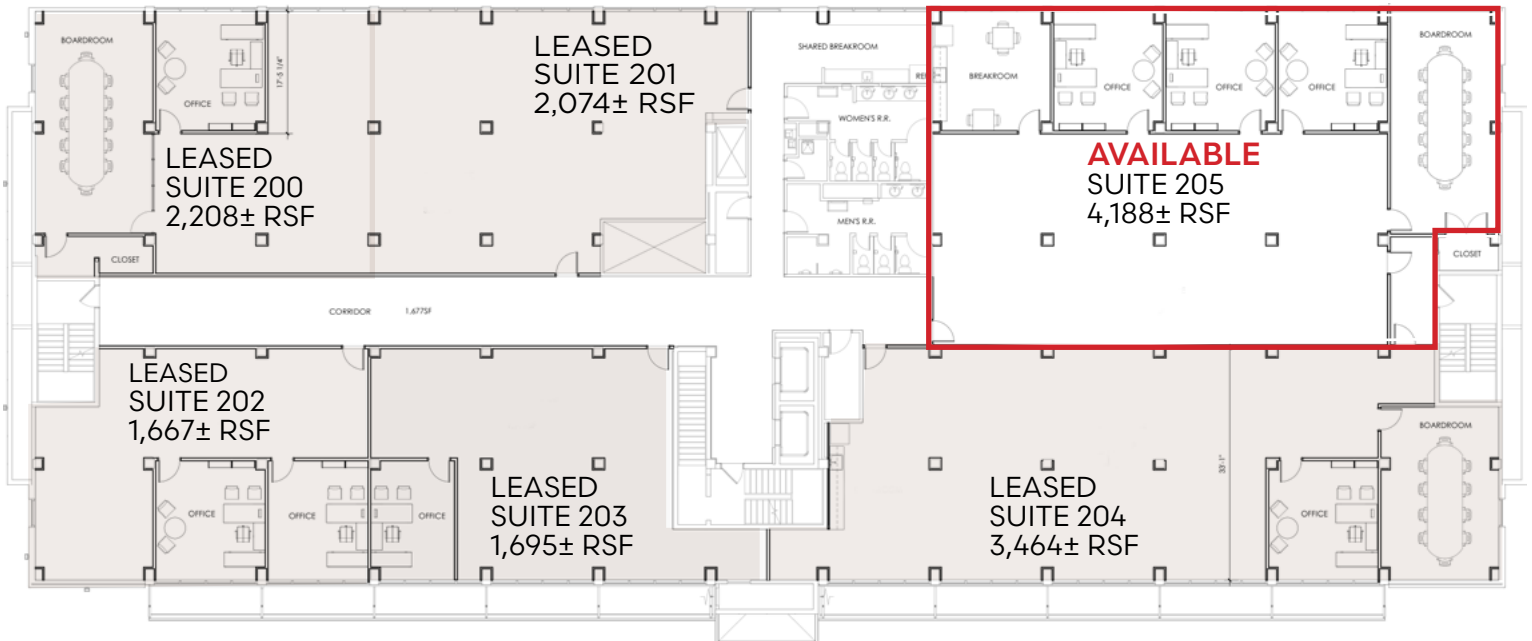
# Floor Plans

## 1<sup>st</sup> FLOOR

**AVAILABLE**  
2,494± RSF

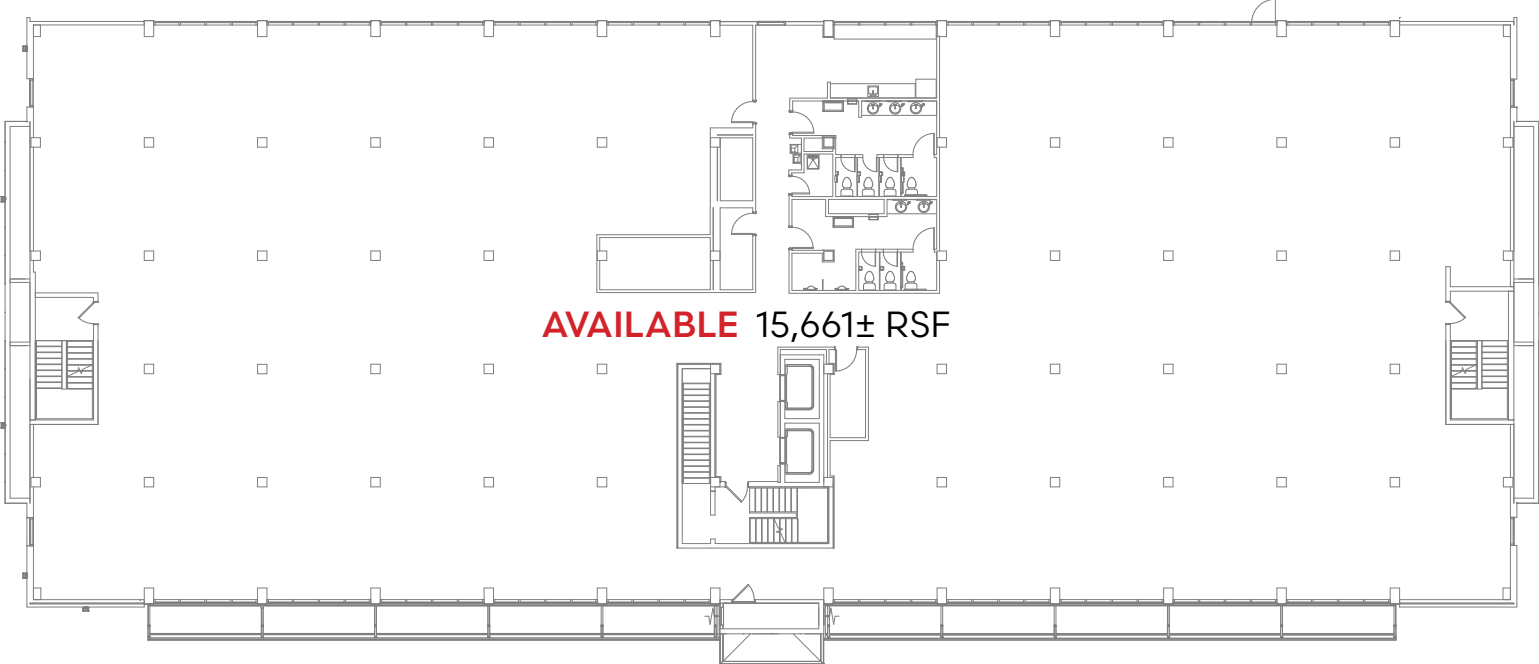


## 2<sup>nd</sup> FLOOR

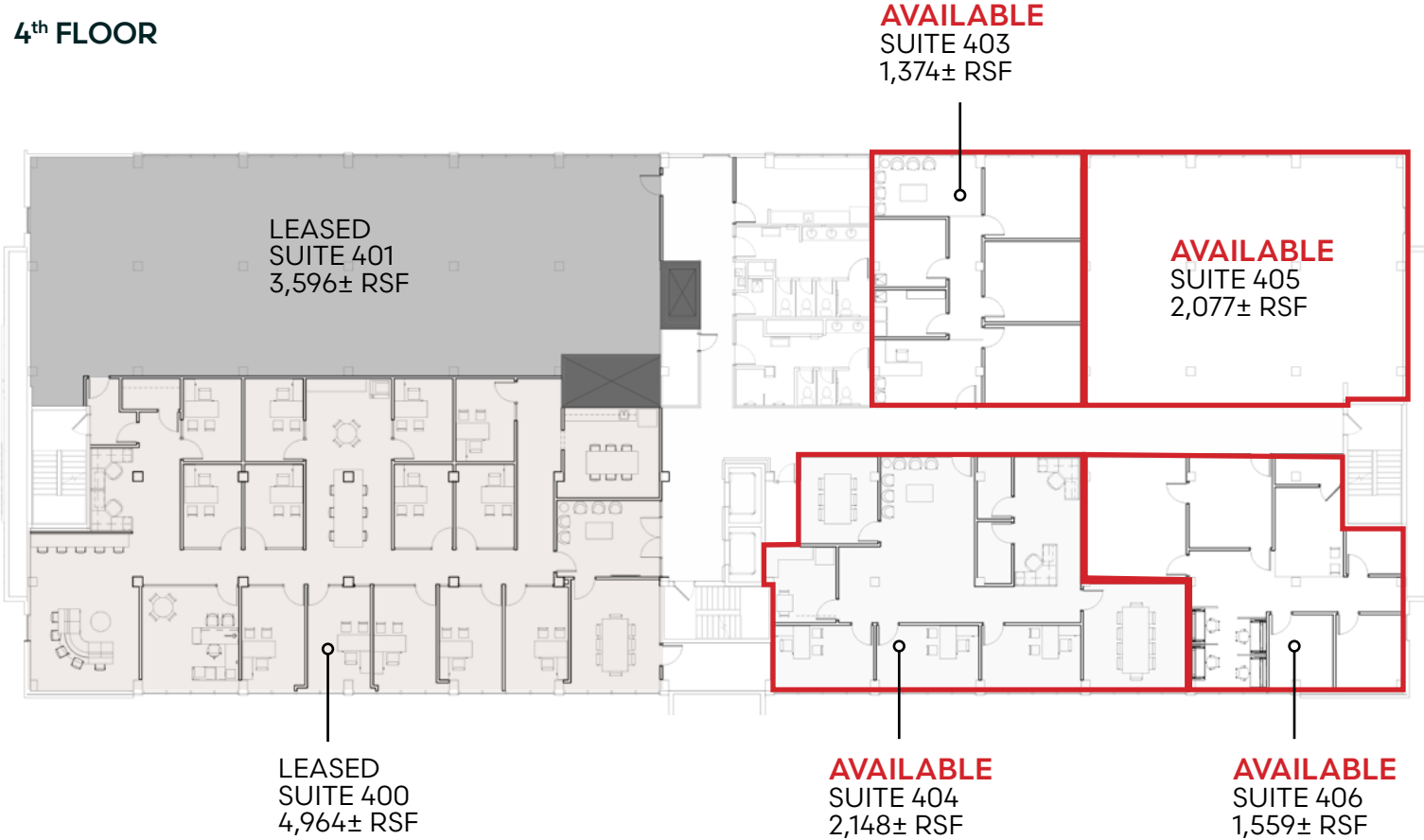


# Floor Plans

## 3<sup>rd</sup> FLOOR



## 4<sup>th</sup> FLOOR



TOWN CENTER



# Newtown/Witchduck Business District

