

# 380 7TH STREET

FOR LEASE | RENOVATED 2ND FLOOR OFFICE

**TCP**  
**TOUCHSTONE**  
COMMERCIAL PARTNERS



[WWW.TCPRE.COM](http://WWW.TCPRE.COM)

**ZACH HAUPERT** [zhaupert@tcpre.com](mailto:zhaupert@tcpre.com)  
D 415.539.1121 | C 415.812.1219

**MICHAEL SANBERG** [msanberg@tcpre.com](mailto:msanberg@tcpre.com)  
D 415.539.1103 | C 415.697.6088

# 380 7TH STREET

## PROPERTY SUMMARY

### ADDRESS

380 7th Street, San Francisco, CA 94103

### AVAILABLE SPACE

+/- 2,125 Square Feet

### RENTAL RATE

\$8,000 per Month, Industrial Gross

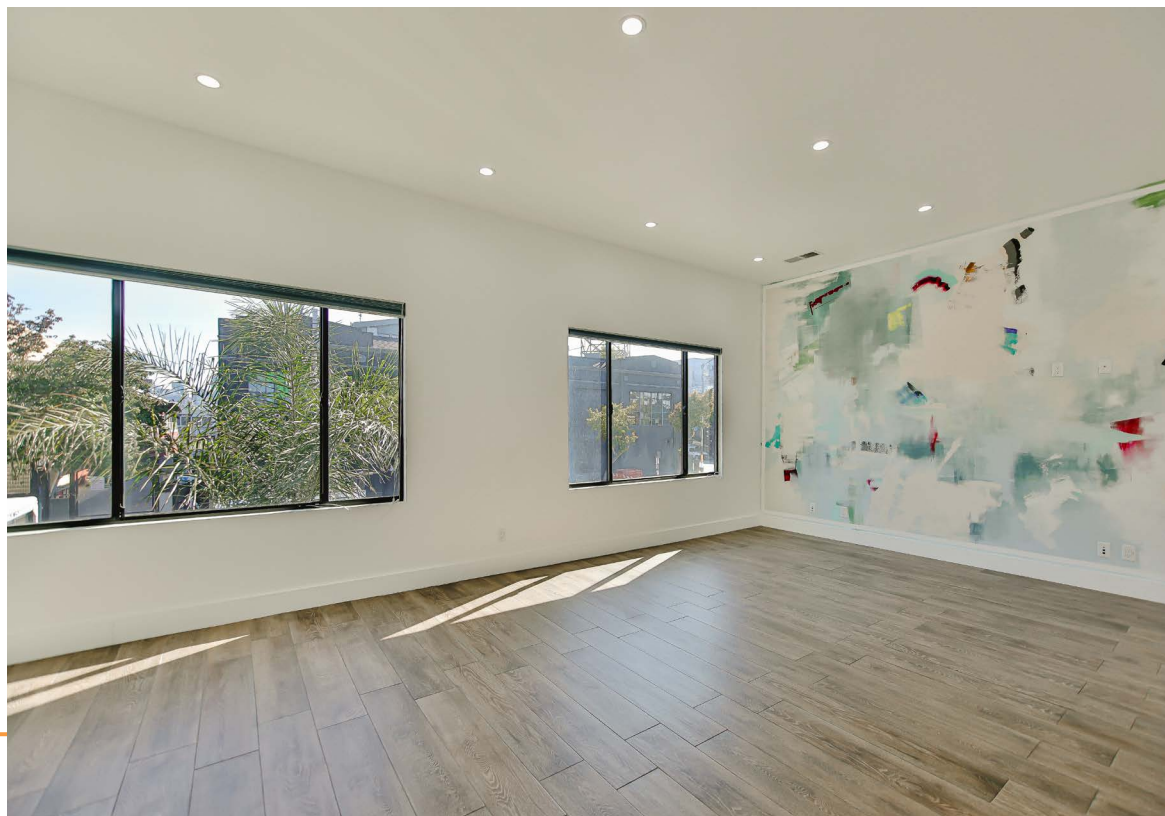
### AVAILABLE

Immediately



## BUILDING ATTRIBUTES

- + Newly Renovated Office Space
- + Skylights Throughout Providing Abundant Natural Light
- + Three (3) Large Private Office/Conference Room Spaces
- + Two (2) Restrooms
- + Beautiful Kitchenette and Break Room
- + Walkable To BART, Muni, Caltrain & Neighborhood Amenities









# 380 7TH STREET

## LOCATION OVERVIEW

Desirable South of Market location, walkable to nearby amenities, public transportation and to surrounding neighborhoods.



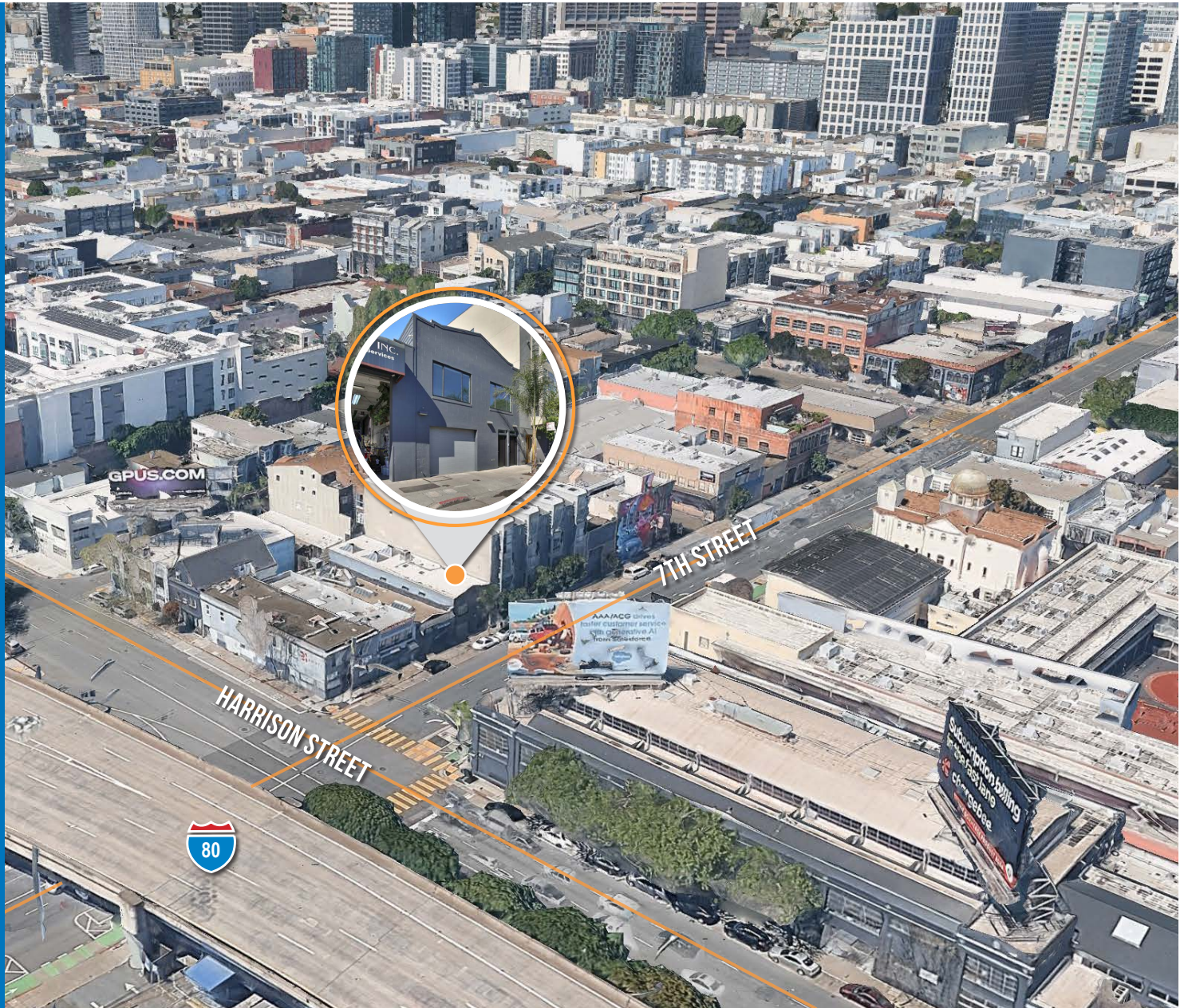
**01 MIN** to Harrison St Muni  
**11 MIN** to Civic Center BART  
**21 MIN** to 4th St Caltrain



**09 MIN** to Union Square  
**10 MIN** to Mission District  
**12 MIN** to Financial District



**04 MIN** to 80 On-Ramp  
**04 MIN** to 280 On-Ramp  
**05 MIN** to 101 On-Ramp

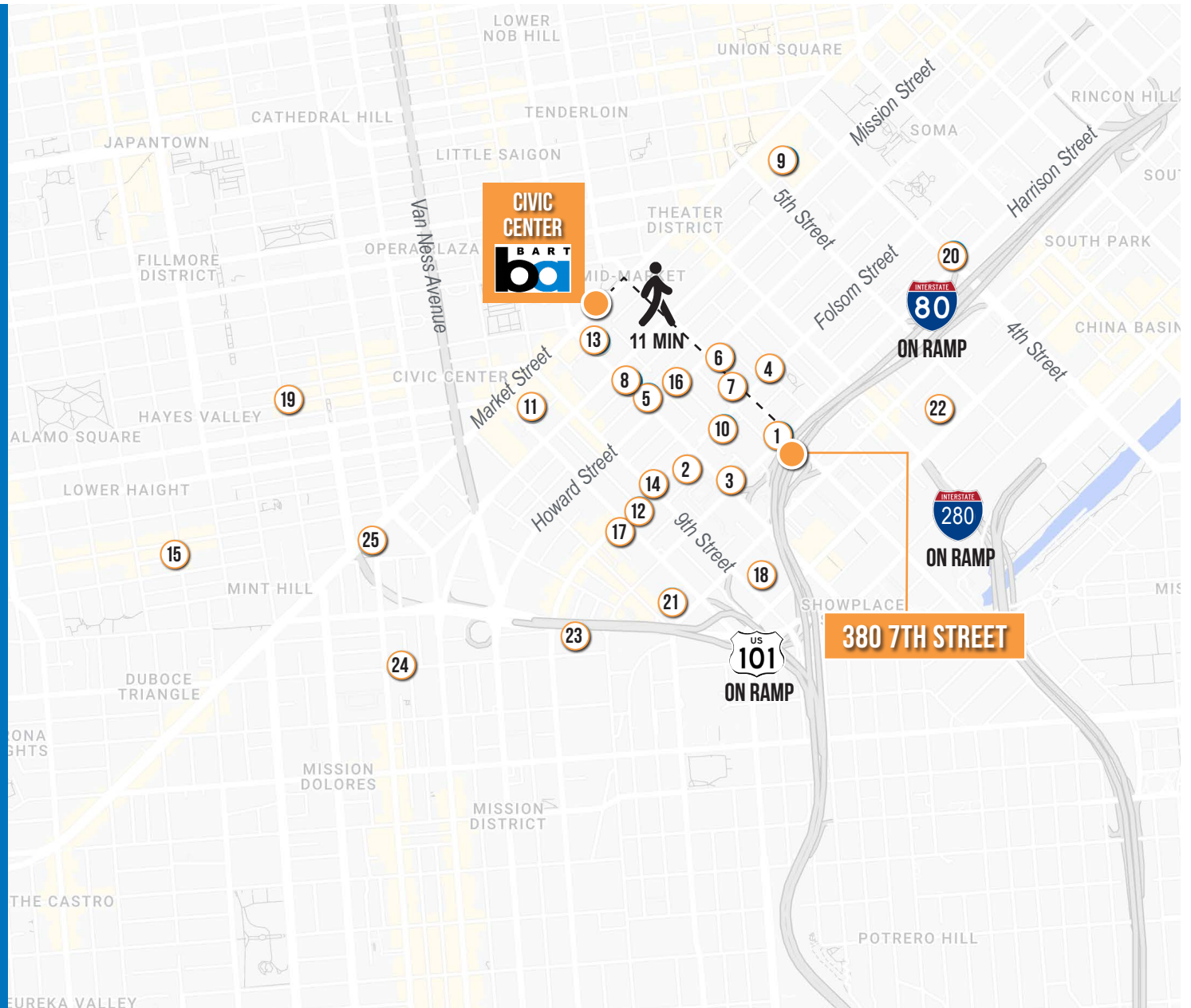




# 380 7TH STREET

## NEARBY AMENITIES

- 1.....Rocco's Cafe
- 2.....Driftwood
- 3.....AK Subs
- 4.....Deli Board
- 5.....Harvest Urban Market
- 6.....SF Champagne Society
- 7.....Sightglass Coffee
- 8.....Sizzling Pot King
- 9.....San Francisco Centre
- 10.....Raven Bar
- 11.....Fitness SF
- 12.....Powerhouse
- 13.....Whole Foods Market
- 14.....Azúcar Lounge
- 15.....Purple Rice
- 16.....Enterprise Brewing
- 17.....Sextant Coffee Roasters
- 18.....Trader Joe's
- 19.....Salt & Straw
- 20.....Whole Foods Market
- 21.....Costco Wholesale
- 22.....San Francisco Flower Market
- 23.....Rainbow Grocery
- 24.....Shizen
- 25.....Martuni's





# 380 7TH STREET



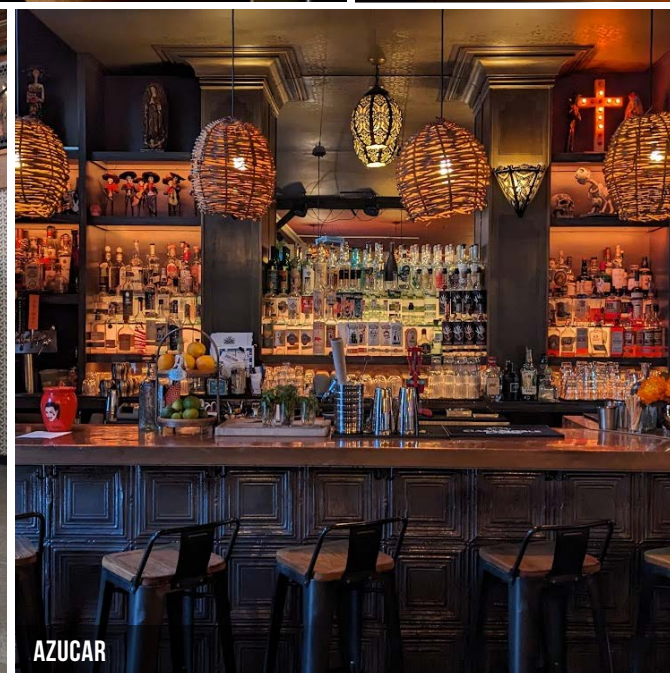
DRIFTWOOD



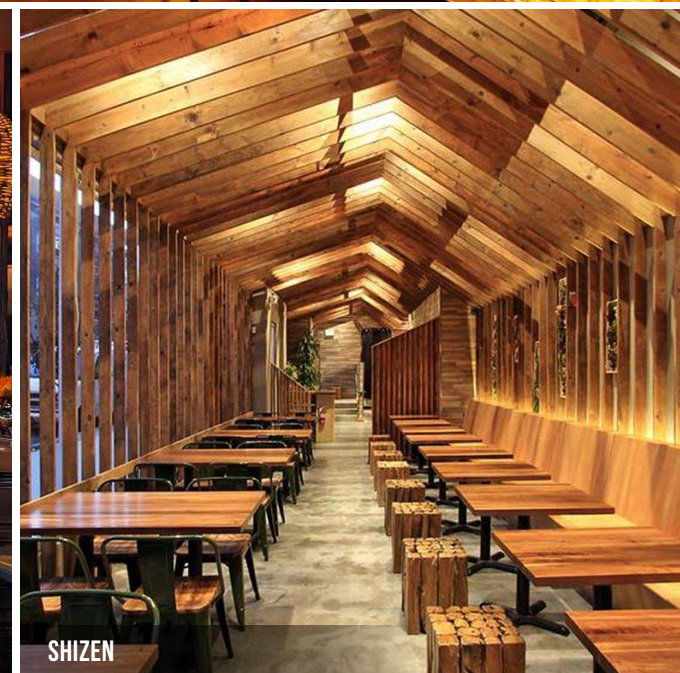
ROCCO'S CAFÉ



SIGHTGLASS COFFEE



AZUCAR



SHIZEN



**380** 7TH  
STREET



Corp. Lic. 01112906  
[www.tcpre.com](http://www.tcpre.com)

## ZACH HAUPERT

D 415.539.1121 C 415.812.1219  
[zhaupert@tcpre.com](mailto:zhaupert@tcpre.com) DRE # 01822907

## MICHAEL SANBERG

D 415.539.1103 C 415.697.6088  
[msanberg@tcpre.com](mailto:msanberg@tcpre.com) DRE # 01930041

This document has been prepared by Touchstone Commercial Partners for advertising and general information only. Touchstone Commercial Partners makes no guarantees, representations or warranties of any kind, expressed or implied, regarding the information including, but not limited to, warranties of content, accuracy and reliability. Any interested party should undertake their own inquiries as to the accuracy of the information. Touchstone Commercial Partners excludes unequivocally all inferred or implied terms, conditions and warranties arising out of this document and excludes all liability for loss and damages arising there from. This publication is the copyrighted property of Touchstone Commercial Partners and/or its licensor(s). ©2025. All rights reserved.