

292 BEDFORD AVE STORE 3  
WILLIAMSBURG

COMMERCIAL  
LEASE





# 292 BEDFORD AVE STORE 3 WILLIAMSBURG



JUSTIN LOSH

(347) 388-4649

JUSTIN@COUNTRYNY.COM



OFFICE

250 MOORE ST, #302

BROOKLYN, NY 11206



## PROPERTY DETAILS



UPON INQUIRY



475 SF



NEGOTIABLE LEASE LENGTH

HVAC INSTALLED

HEAVY FOOT TRAFFIC

HIGH CEILINGS

CURRENTLY SET UP AS A QSR

FOOD USE IS OK, BUT ONLY  
LIGHT COOKING OR BAKING

THREE COMPARTMENT SINK  
AND OTHER CONVENIENCES  
FOR FOOD USE ARE INSTALLED

ONE EMPLOYEE BATHROOM  
IN REAR OF THE SPACE

LOCATED ON A BUSY  
COMMERCIAL CORRIDOR



# 292 BEDFORD AVE STORE 3 WILLIAMSBURG



JUSTIN LOSH

(347) 388-4649

JUSTIN@COUNTERNY.COM



OFFICE

250 MOORE ST, #302

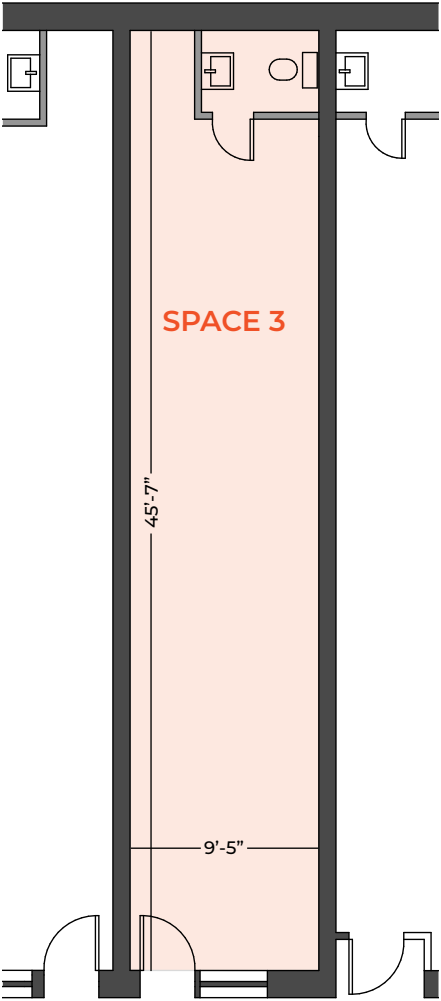
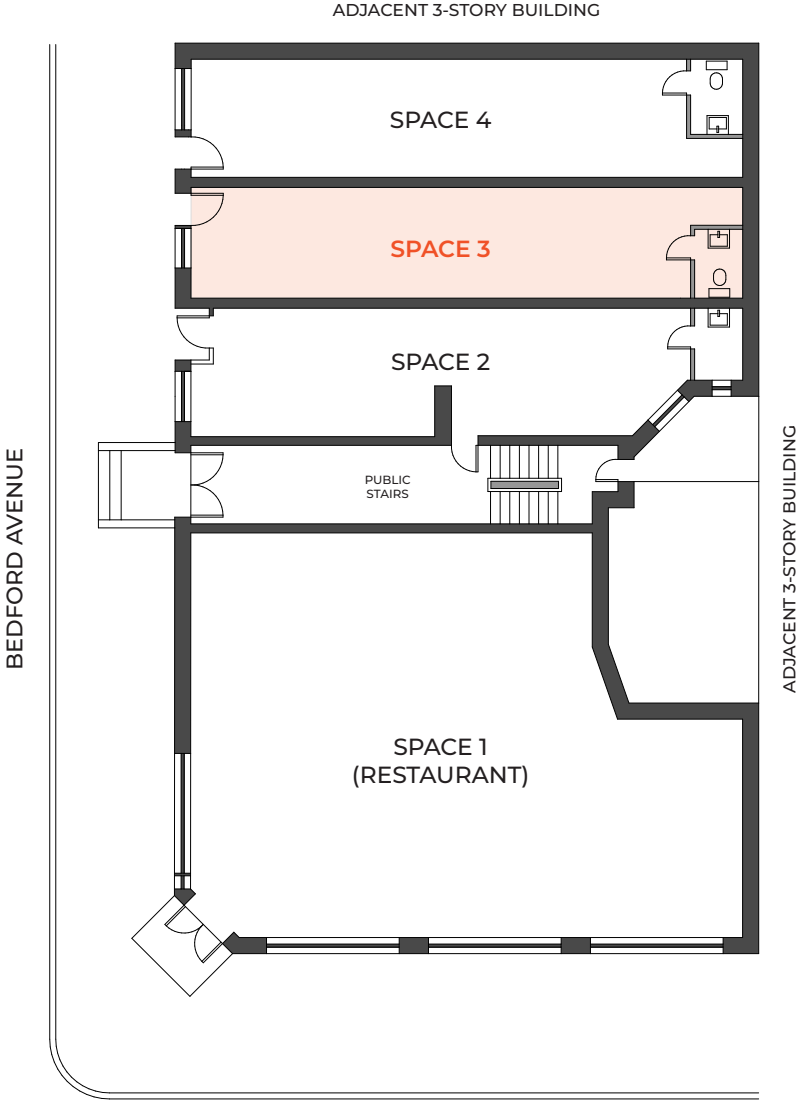
BROOKLYN, NY 11206



292 BEDFORD AVE STORE 3  
WILLIAMSBURG

**JUSTIN LOSH**  
(347) 388-4649  
JUSTIN@COUNTRYNY.COM

**OFFICE**  
250 MOORE ST, #302  
BROOKLYN, NY 11206



Disclaimer: Please note this floor plan is for marketing purposes and is only to be used as a guide. All efforts have been made to ensure its accuracy at time of print. Approximate measurements listed in this floor plan are reflective of the interior space dimensions only.

# 292 BEDFORD AVE STORE 3 WILLIAMSBURG



**JUSTIN LOSH**

(347) 388-4649

JUSTIN@COUNTERNY.COM



**OFFICE**

250 MOORE ST, #302

BROOKLYN, NY 11206



## NEIGHBORS

- 1 - SPRINGBONE KITCHEN
- 2 - IONA
- 3 - HOLE IN THE WALL
- 4 - SUPREME
- 5 - WILLIAMSBURG CINEMA
- 6 - MAISON PREMIERE

- 7 - MARTHA'S COUNTRY BAKERY
- 8 - APPLE STORE
- 9 - WHOLE FOODS
- 10 - BIRDS OF A FEATHER
- 11 - SALT + CHARCOAL
- 12 - VANESSA'S DUMPLING HOUSE

## DEMOGRAPHICS

(1MI/3MI)

POPULATION - 156,600 / 1,354,265

AVERAGE AGE - 33.7 / 35.7

AVERAGE HH INCOME -

\$115,674 / \$122,917

## TRANSPORT

L TRAIN: BEDFORD AVE

AVERAGE DAILY RIDERS

WEEKDAY - 25,158

WEEKEND - 26,623