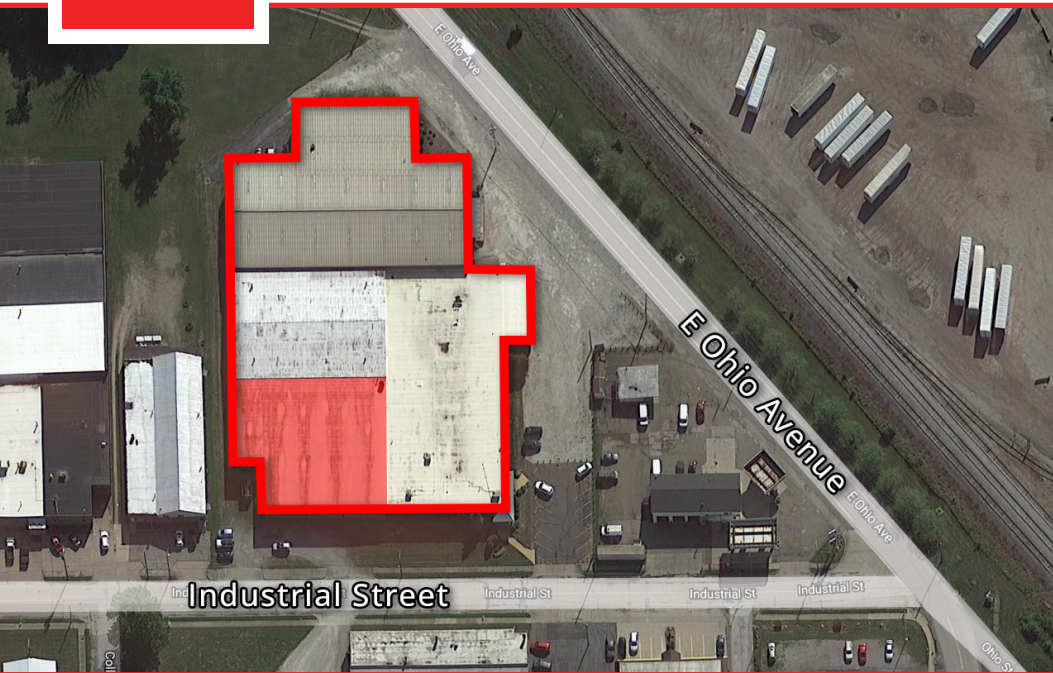


# Industrial Space for Lease

40 INDUSTRIAL STREET, RITTMAN, OH 44270



## Overview

Clean and well maintained factory/warehouse space. Across the street from Morton Salt on Industrial Street. Quick access to I-76. Great for light manufacturing, storage and distribution.

## Highlights

- 14'-16' Clear Height
- Dock
- Sprinklers
- Bathrooms
- Well-Lit
- Heated

## Property Details



**Lease Rate**  
\$5.85 SF/YR  
(Plus Utilities)



**Space Available**  
+/- 12,200 SF



**Lot Size**  
+/- 2.9 Acres



**Zoning**  
Industrial

Rev: March 22, 2023



# Industrial Space for Lease

40 INDUSTRIAL STREET, RITTMAN, OH 44270



Rev: March 22, 2023



## Our Network Is Your Edge

All information is from sources deemed reliable and is subject to errors, omissions, change of price, rental, prior sale, and withdrawal without notice. Prospect should carefully verify each item of information contained herein.

## Joe Zumpano

C: 330.990.0847

O: 330.940.9360

JZumpano@HoffLeigh.com

## Chad Whitmer

C: 330.714.1145

O: 330.940.9360

CWhitmer@HoffLeigh.com



# Industrial Space for Lease

40 INDUSTRIAL STREET, RITTMAN, OH 44270



Rev: March 22, 2023



## Our Network Is Your Edge

All information is from sources deemed reliable and is subject to errors, omissions, change of price, rental, prior sale, and withdrawal without notice. Prospect should carefully verify each item of information contained herein.

## Joe Zumpano

C: 330.990.0847

O: 330.940.9360

JZumpano@HoffLeigh.com

## Chad Whitmer

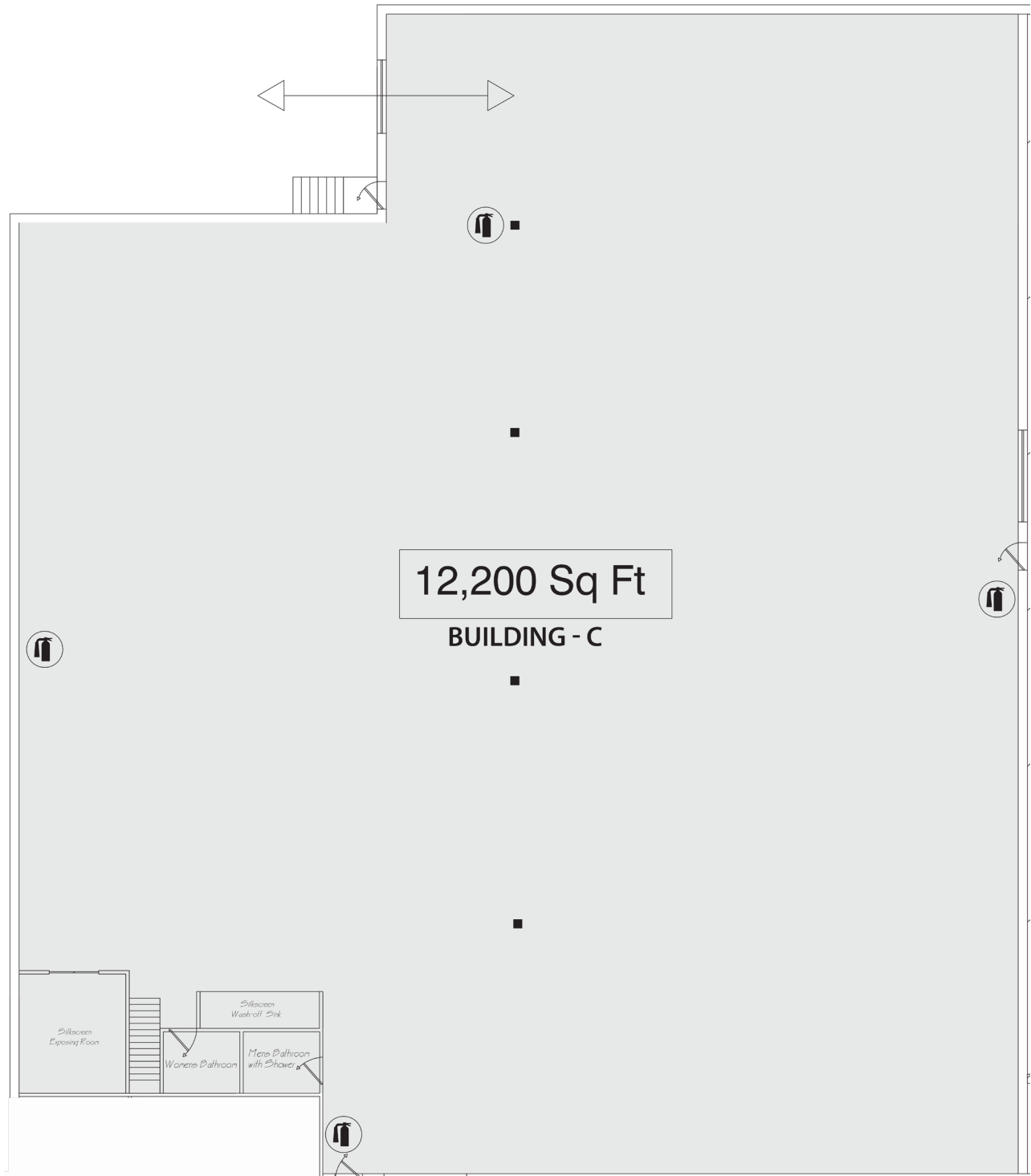
C: 330.714.1145

O: 330.940.9360

CWhitmer@HoffLeigh.com

# Industrial Space for Lease

40 INDUSTRIAL STREET, RITTMAN, OH 44270



Rev: March 22, 2023

## Our Network Is Your Edge



All information is from sources deemed reliable and is subject to errors, omissions, change of price, rental, prior sale, and withdrawal without notice. Prospect should carefully verify each item of information contained herein.

### Joe Zumpano

C: 330.990.0847

O: 330.940.9360

JZumpano@HoffLeigh.com

### Chad Whitmer

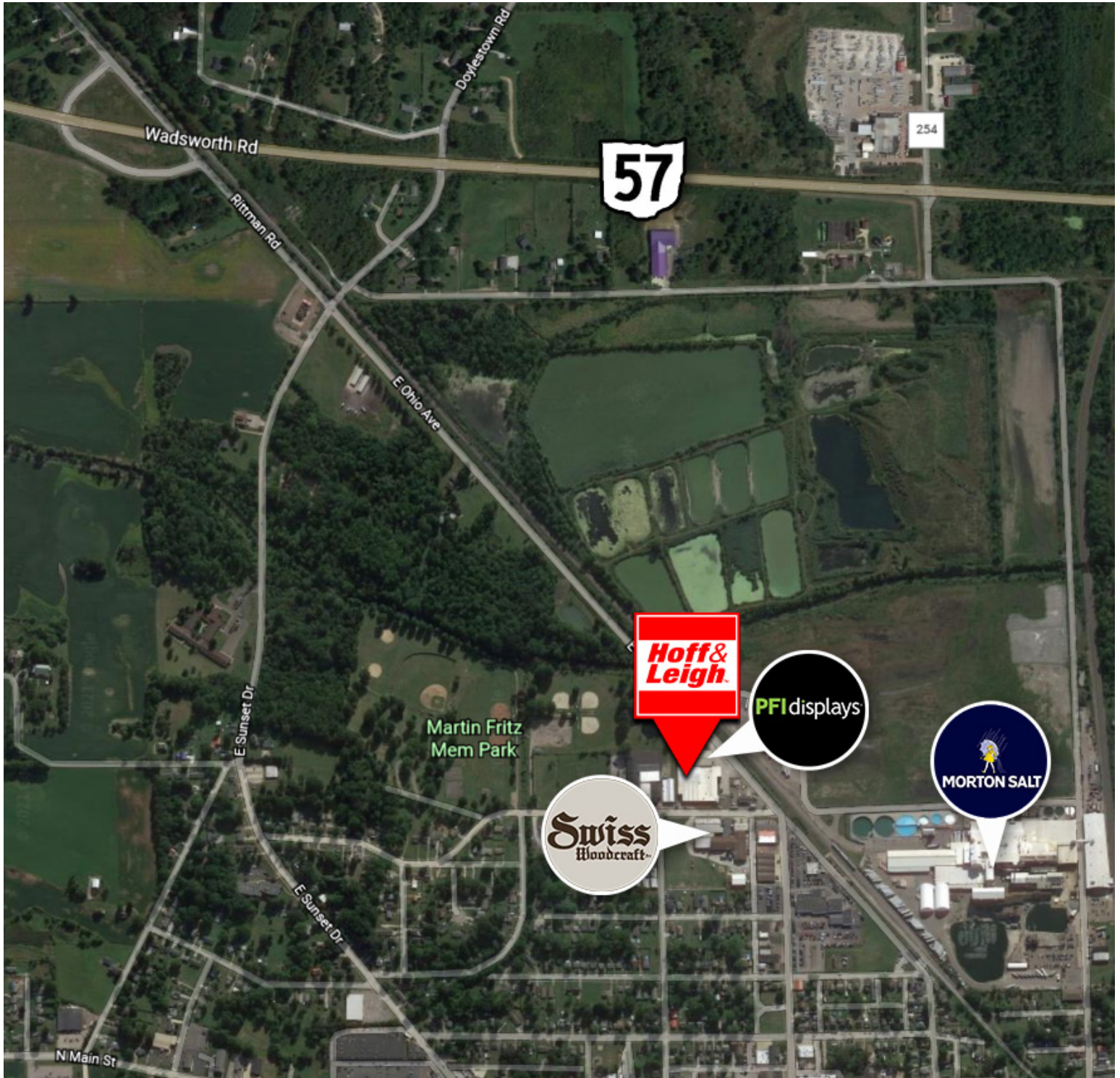
C: 330.714.1145

O: 330.940.9360

CWhitmer@HoffLeigh.com

# Industrial Space for Lease

40 INDUSTRIAL STREET, RITTMAN, OH 44270



Rev: March 22, 2023

## Our Network Is Your Edge

All information is from sources deemed reliable and is subject to errors, omissions, change of price, rental, prior sale, and withdrawal without notice. Prospect should carefully verify each item of information contained herein.

**Joe Zumpano**

C: 330.990.0847

O: 330.940.9360

JZumpano@HoffLeigh.com

**Chad Whitmer**

C: 330.714.1145

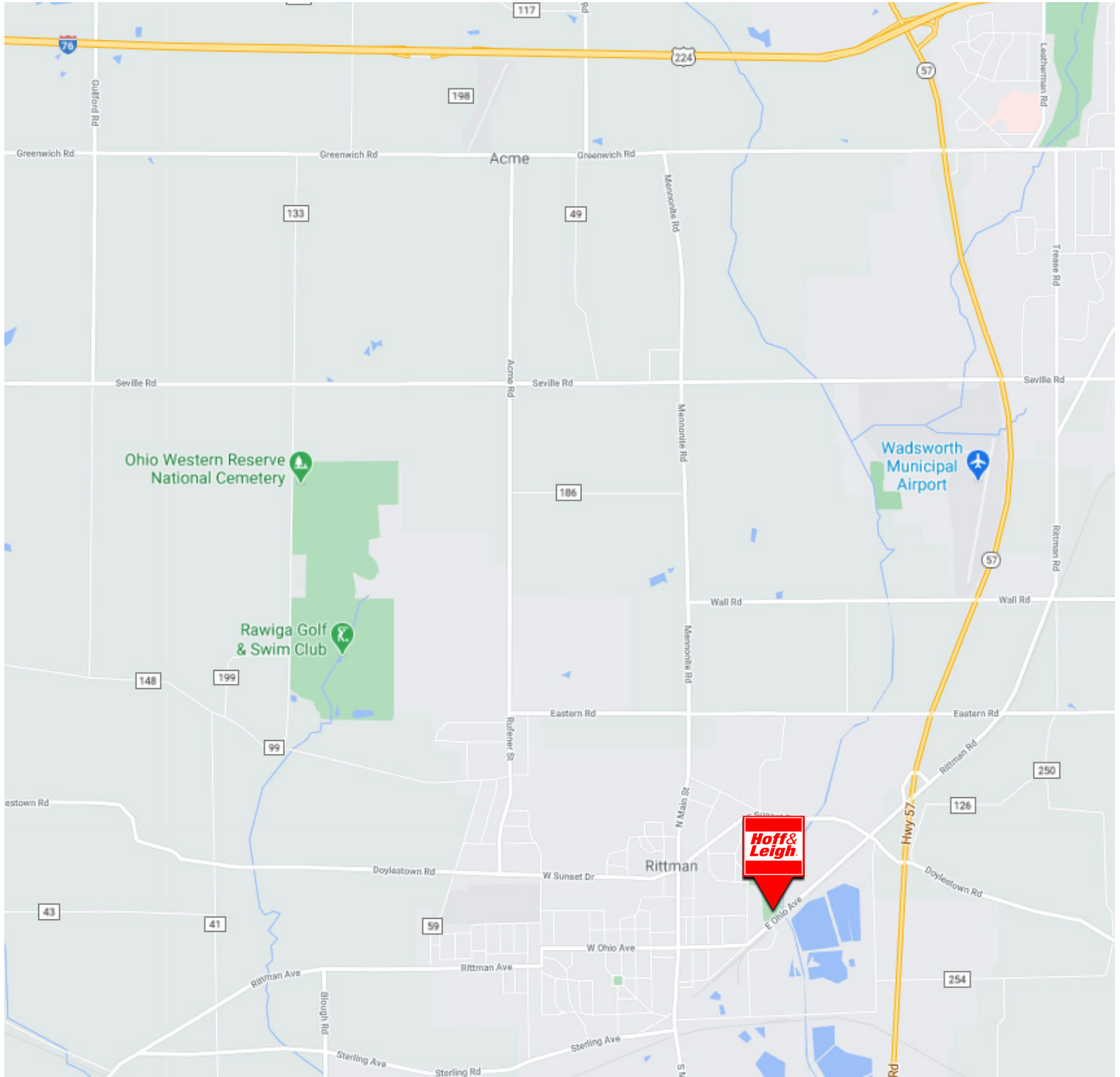
O: 330.940.9360

CWhitmer@HoffLeigh.com



# Industrial Space for Lease

40 INDUSTRIAL STREET, RITTMAN, OH 44270



Rev: March 22, 2023



## Our Network Is Your Edge

All information is from sources deemed reliable and is subject to errors, omissions, change of price, rental, prior sale, and withdrawal without notice. Prospect should carefully verify each item of information contained herein.

## Joe Zumpano

C: 330.990.0847

O: 330.940.9360

JZumpano@HoffLeigh.com

## Chad Whitmer

C: 330.714.1145

O: 330.940.9360

CWhitmer@HoffLeigh.com