

For Sale

NAIDESCO

2545 S Hanley Rd
St. Louis, MO 63144



Property Highlights



For Sale
28,267 SF on .82 AC



**Office / Flex
Building**



**Centrally located in Hanley
Industrial Submarket**



Sale Price:
\$2,500,000

For more information, please contact:



Peter Sheahan

d (314) 994 - 4081
c (314) 420 - 3095
psheahan@naidesco.com



Corbin Cox

d (314) 994 - 2326
c (314) 624 - 7686
ccox@naidesco.com

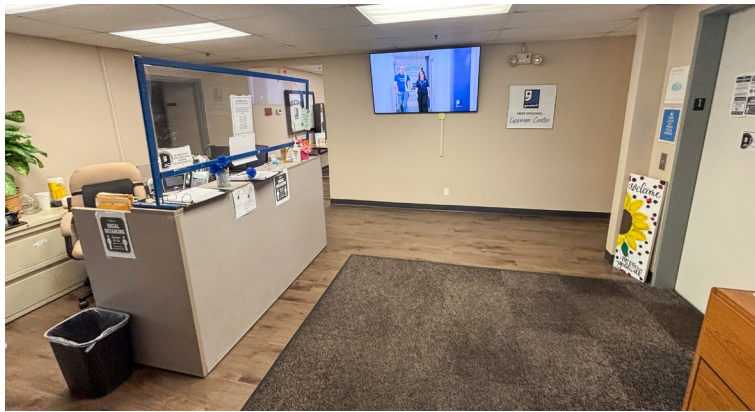
NAIDESCO

8112 Maryland Ave, Suite 300
St. Louis, MO 63105
(314) 994 - 4800
naidesco.com

Property Features

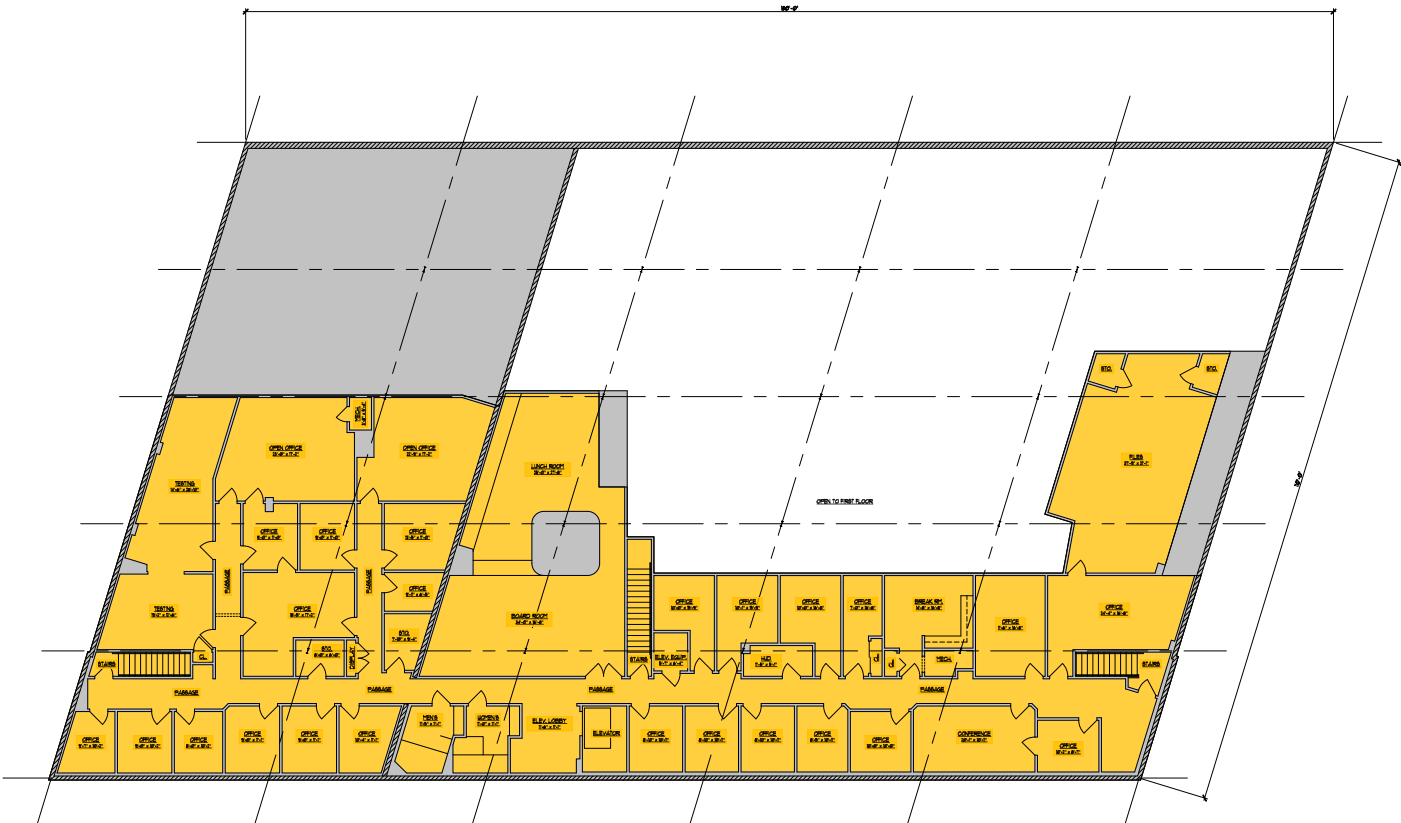
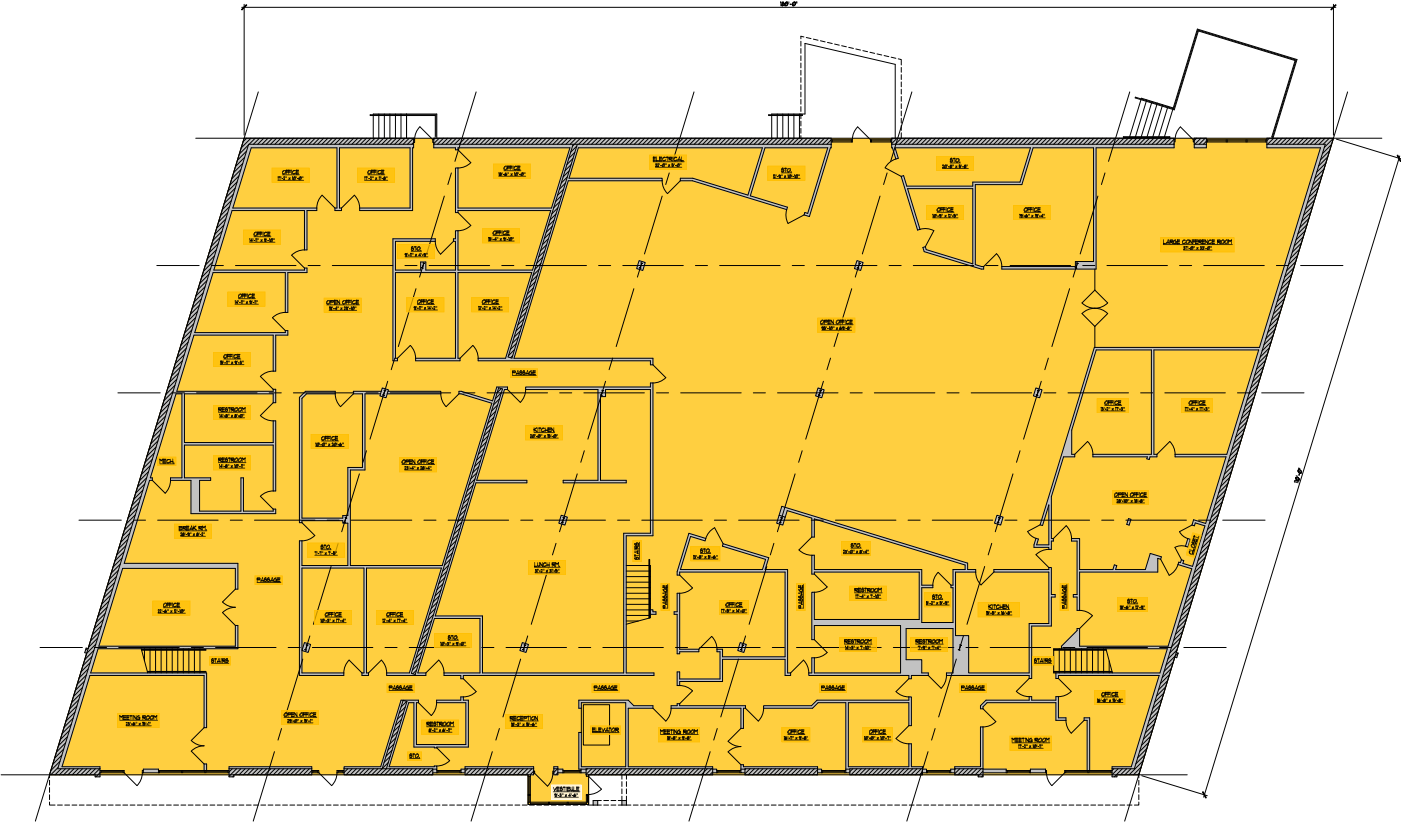
- 28,267 SF Office/Flex building with full office buildout
- Two floors, elevator served
- Large bullpen, numerous private offices, and modern conference room
- 48 dedicated parking spaces
- Centrally located in Hanley Industrial submarket near Hanley & Manchester intersection
- Two dock platforms with potential for industrial conversion

 **Sale Price: \$2,500,000**



Site







Peter Sheahan

d (314) 994 - 4081
c (314) 420 - 3095
psheahan@naidesco.com



Corbin Cox

d (314) 994 - 2326
c (314) 624 - 7686
ccox@naidesco.com



NAIDESCO

8112 Maryland Ave, Suite 300
St. Louis, MO 63105
(314) 994 - 4800
naidesco.com