

INDUSTRIAL – For Lease

7641 Nineteen Mile
Sterling Heights, Michigan



Total Building Size:	
Total Available:	3,965sf
Age:	1980
Factory:	2,340sf
Office:	1,625sf
Minimum Divisible:	3,965sf
Zoned:	Industrial

Lease Rate:	\$10.45/sf Gross
Monthly Lease Rate:	\$3,452.85

Property Details

Acreage:		Power:	600 Amps
Frontage:		Buss:	
Depth:		Lights:	Metal Halide
Parking:	8	Truckwell:	
Expandable:		Grade Door:	12' x 14'
Storage:		Heating:	Gas
Clearance:	19'	A/C:	Office
Bay Size:		Sprinklered:	
Lavatories:	2	Airlines:	
Crane:		Compressor:	
Underhook:		Floordrains:	

Additional Information:

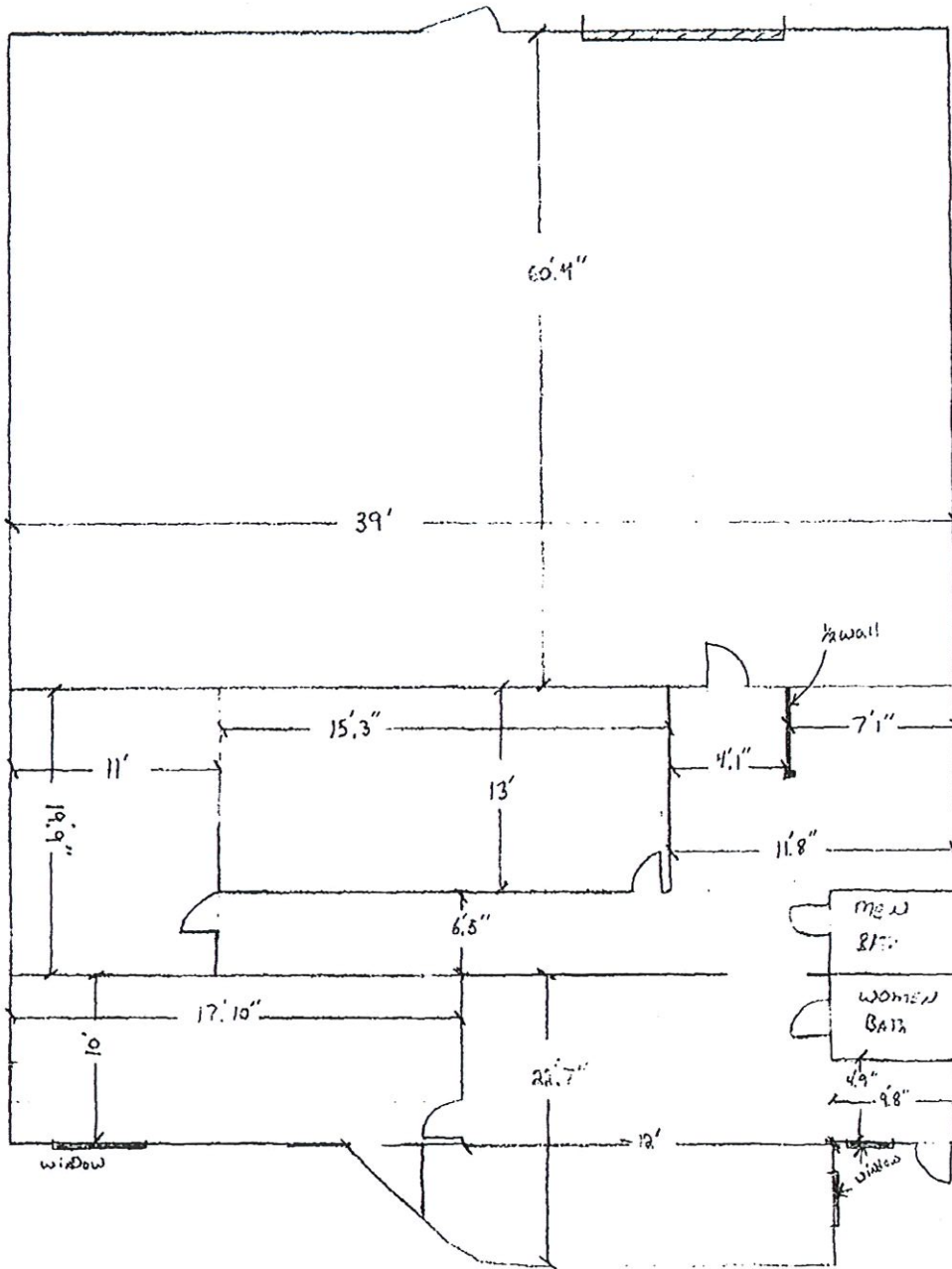
High image multi-tenant building. Lease rate includes real estate taxes, building insurance and common area maintenance.

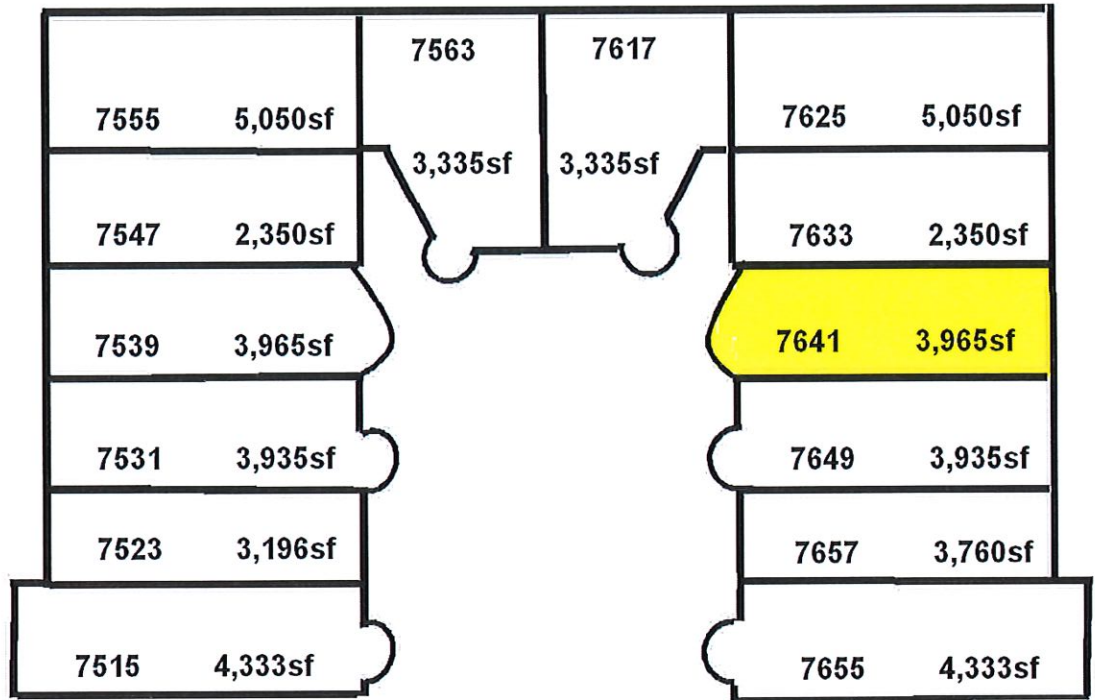
Contact Information:

Chris Dowell
248-447-2717
chris.dowell@nmrk.com

Jack Coury
248-372-2276
jack.coury@nmrk.com

NEWMARK





19 MILE ROAD

