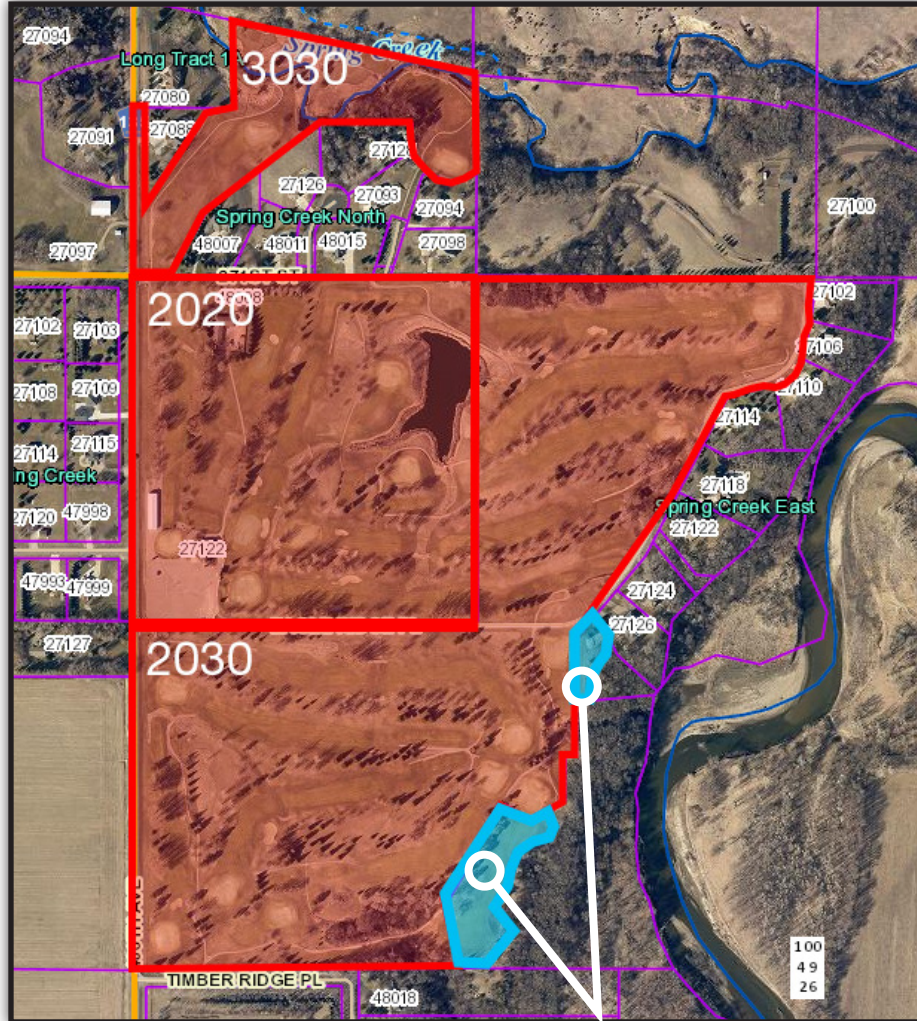




PROPERTY DETAILS

Spring Creek Golf Course Land
27122 480th Avenue, Harrisburg, SD 57032
List Price: \$3,200,000



Parcel 100.49.23.3030

Acres: 12.33
Holes: 2
Year Built: 1994
Age: 30
Property Taxes: \$1,919

Parcel 100.49.26.2020

Acres: 40.00
Holes: 5
Year Built: 1994
Age: 30
Property Taxes: \$22,137
Clubhouse SF: 4,654
Cart Storage SF: 4,200
Maintenance SF: 4,320
Total Square Feet: 13,174

Parcel 100.49.26.2030

Acres: 73.61+/-
Holes: 11
Year Built: 1994
Age: 30
Property Taxes: \$10,972

Total
Acres: 125.94+/-
Holes: 18
Year Built: 1994
Age: 30
Property Taxes: \$35,028
Total Building SF: 13,174



*State of South Dakota owns the Forest Legacy and VanderPan tracts of land. The State will grant the new owner an easement for use of portions of these tracts of land necessary for golf course operations until the property no longer is operated as a golf course.

PROPERTY DETAILS

Spring Creek Golf Course Land

27122 480th Avenue, Harrisburg, SD 57032

List Price: \$3,200,000

Sale Price: \$3,200,000

Prime Location

Nestled just outside Harrisburg, SD, and minutes from Sioux Falls, in the heart of the rapidly expanding Sioux Metro area.

Investment Opportunity

A great property for investors looking to capitalize on the growing interest in golf, a sought-after sport in the Sioux Metro area. Strong potential for revenue through memberships, green fees, events, and more.

The golf club operating business (Spring Creek Country Club, Inc.) IS NOT being sold under this listing ONLY the land. The Driving range across the street IS NOT being sold under this listing.



PROPERTY DETAILS

Spring Creek Golf Course Land
27122 480th Avenue, Harrisburg, SD 57032
List Price: \$3,200,000

Sale Price: \$3,200,000

18-Hole Golf Course

A fully operational course with 18 holes spread over 125.84+/- acres. Ready for immediate use by members and guests.
Golf Cart Storage Area: Ample space to store carts and maintain golf operations smoothly.

Clubhouse and Amenities

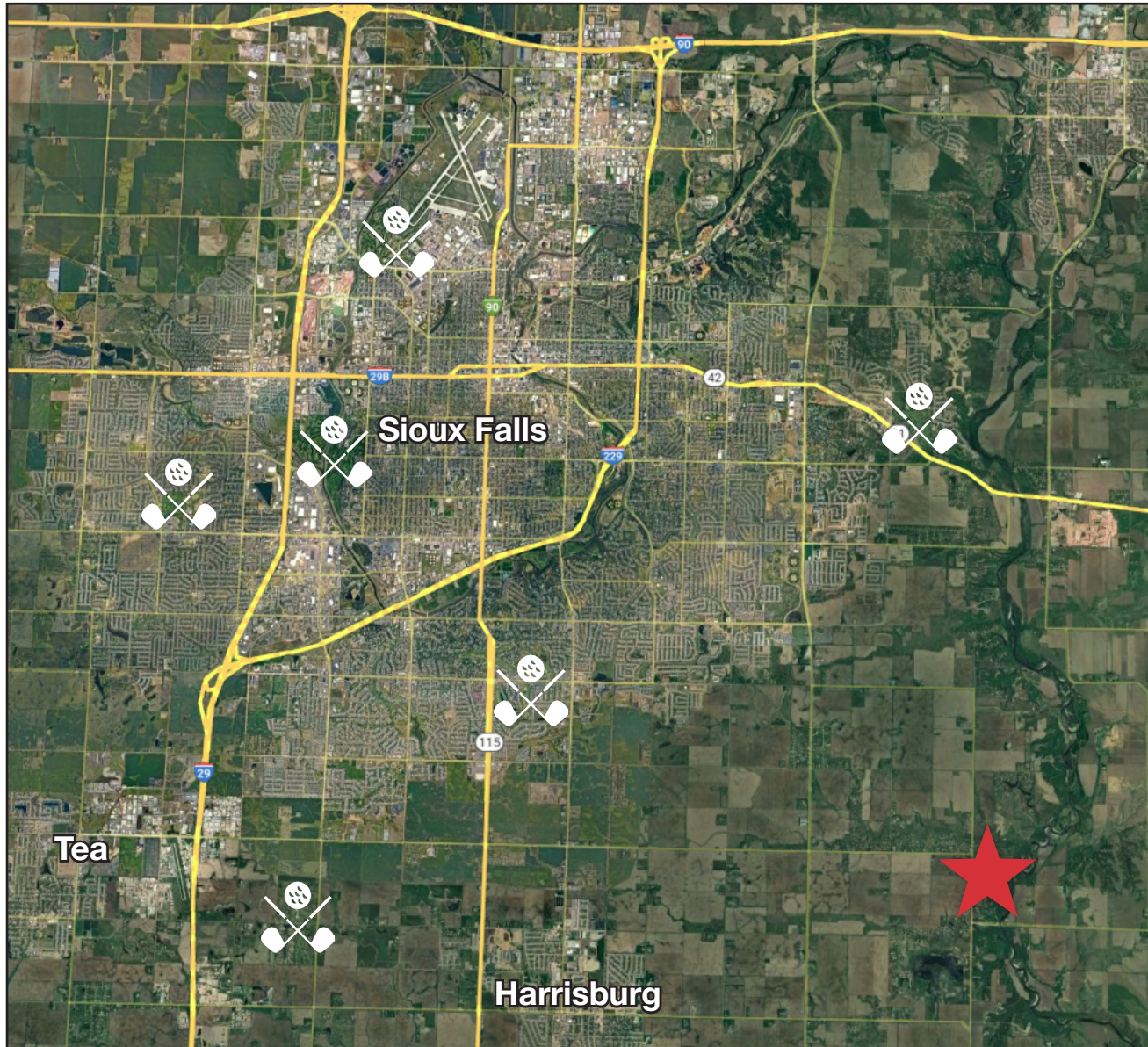
2,327 SF Clubhouse: Perfect for hosting events, dining, and gatherings. The clubhouse needs to be renovated but offers significant upside potential for customization.

Event Space: Opportunity to expand services by hosting weddings, corporate outings, and community events.



DISTANCE

Spring Creek Golf Course Land
27122 480th Avenue, Harrisburg, SD 57032
List Price: \$3,200,000



Travel Distances



6 miles
9 minutes
Harrisburg

12 miles
23 minutes
Sioux Falls

13 miles
22 minutes
Tea

 - Golf Courses

AERIAL

Spring Creek Golf Course Land
27122 480th Avenue, Harrisburg, SD 57032
List Price: \$3,200,000





Gregg Brown
MBA, SIOR
Senior Vice President
605 906 0394
gbrown@naisiouxfalls.com



Dennis Breske
CCIM, SIOR, MBA
Senior Vice President
605 310 6666
dbreske@naisiouxfalls.com



Briana Kacmarynski
Broker Associate
605 370 1808
brianak@naisiouxfalls.com

