

Highway 67 / I-16 Interchange

Approximately ±48.61 Acres

6955 Old Groveland Road
Nevils, GA 31321



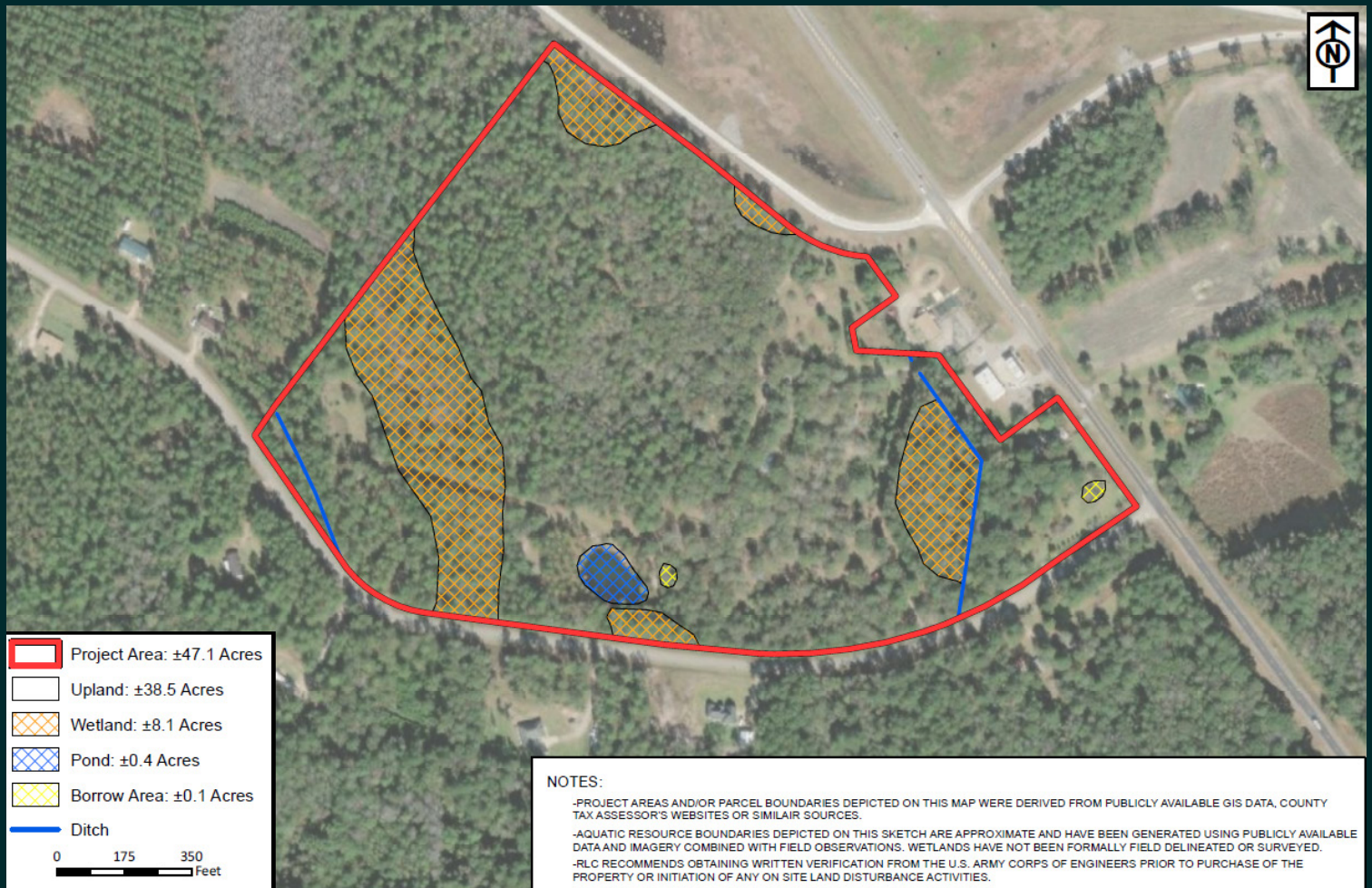
Site Description

This prime ±48.61 AC parcel, strategically located at the Hwy 67 and I-16 interchange, offers unparalleled access and development potential. Benefiting from close proximity to Georgia Southern University, the Hyundai Metaplant, and the Port of Savannah, this site is ideal for industrial or large business facilities. With direct access to I-16, the property is perfectly positioned to accommodate auto-oriented commercial and industrial uses, as well as single or multi-family residential options. The versatile zoning allows for a wide range of uses including manufacturing, assembly, distribution, and wholesale trade.

Additional Details

- + Total of ±48.61 AC
- + Asking Price: \$150,000 per acre
- + Approximately 1,200 feet of frontage on I-16
- + Approximately 625 feet of frontage on Highway 67

Preliminary Wetland Assessment



For Sale

Site Aerials



Site Location

1

13 miles to Georgia Southern University

2

14.9 miles to Statesboro, GA

3

18.4 miles to Hyundai Metaplant

4

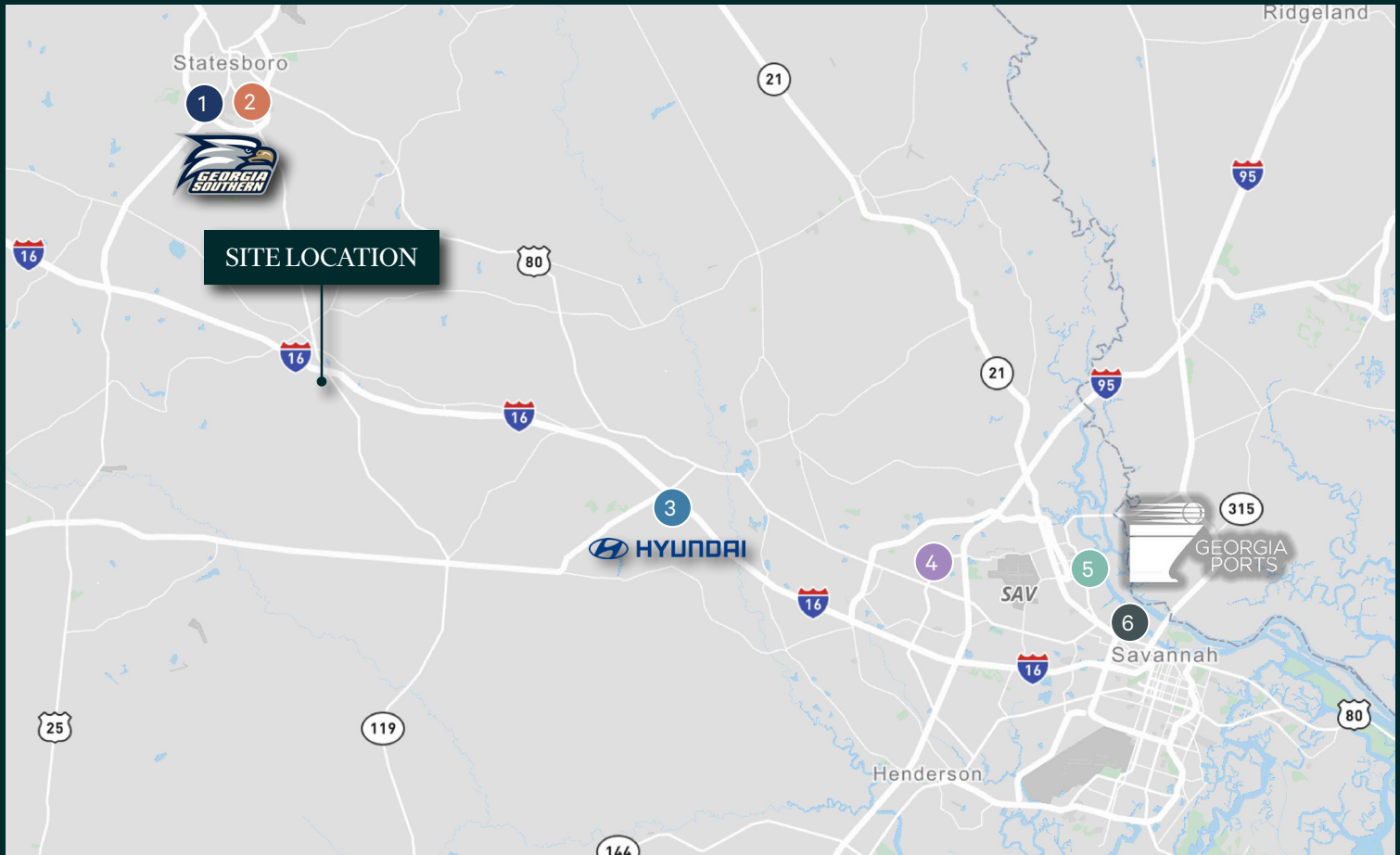
18.8 miles to Pooler, GA

5

40.2 miles to Garden City Terminal

6

41.5 miles to Ocean Terminal



Contact Us

Andrew Benton

Senior Associate

+1 912 656 1878

andrew.bentonjr@cbre.com

CBRE, Inc.

+1 912 228 3528

144 Habersham Street

Savannah, GA 31401

© 2025 CBRE, Inc. All rights reserved. This information has been obtained from sources believed reliable, but has not been verified for accuracy or completeness. You should conduct a careful, independent investigation of the property and verify all information. Any reliance on this information is solely at your own risk. CBRE and the CBRE logo are service marks of CBRE, Inc. All other marks displayed on this document are the property of their respective owners, and the use of such logos does not imply any affiliation with or endorsement of CBRE. Photos herein are the property of their respective owners. Use of these images without the express written consent of the owner is prohibited.