

10 ACRES - MAIN STREET - HIGHLANDS, TX



2222 N MAIN ST

LOT SIZE: 463966 SF

MLS#: 23844102

LIST PRICE: \$1,700,000

DESCRIPTION:

WELCOME TO AN EXTRAORDINARY OPPORTUNITY IN HIGHLANDS, TEXAS! THIS EXPANSIVE PROPERTY SPANS OVER 10 ACRES WITH DUAL STREET ACCESS, BOASTING 388' OF FRONTAGE ON MAIN STREET AND 656' ON GRACE LANE. A VERSATILE BLANK CANVAS WITH ENDLESS POTENTIAL FOR DEVELOPMENT, THIS PROPERTY IS PERFECT FOR RESIDENTIAL, COMMERCIAL, OR INDUSTRIAL USE. FEATURING A HISTORIC 2800+ SQ/FT HOME WITH 5 BEDROOMS, 2 FIREPLACES, AND A 50-YEAR ROOF, UPGRADED WINDOWS WITH A LIFETIME WARRANTY, SALTWATER SWIMMING POOL, OFFICE BUILDING, METAL BUILDING, EQUIPMENT BUILDING, TRACTOR SHED, AND POND. NEWLY CONSTRUCTED ROAD FOR EASY ACCESS. TWO TAX PARCELS TOTALING 10.65 ACRES (TWO TRACTS PER THE HARRIS COUNTY TAX ROLLS 041-040-001-0211 - 5.65 ACRES & 041-040-001-0184 - 5 ACRES).

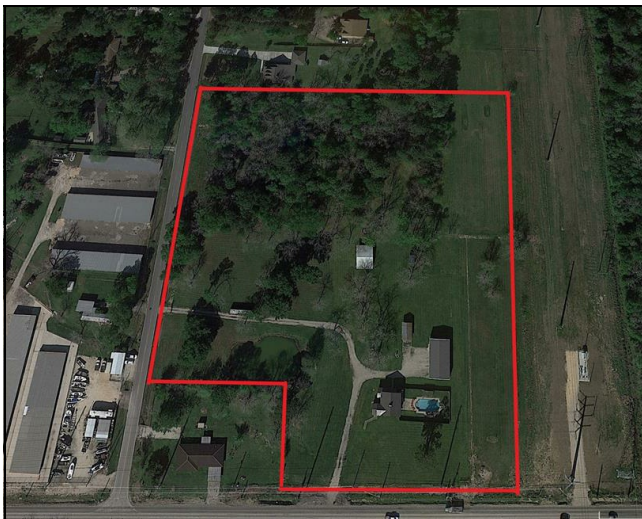
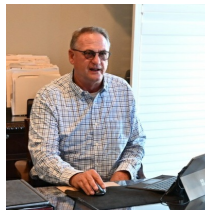


MARK COYLE

Cell: (713) 927-1890

mcoyle43@gmail.com

RE/MAX Leading Edge



No representation or warranties, either expressed or implied, are made as to the accuracy of the information or with respect to the suitability, usability, feasibility, merchantability or condition of any property described herein.