

FOR LEASE

14 GALLI DRIVE

Novato, CA 94949



The information herein has not been independently verified by the real estate brokers. Interested parties should have experts of their choice inspect and verify all information. Real estate brokers are not experts with respect to building construction, environmental, legal, tax, and other such matters.



SAMUEL KO

CA LIC #01894341

(415) 259-9642

sam@meridiancommercial.com

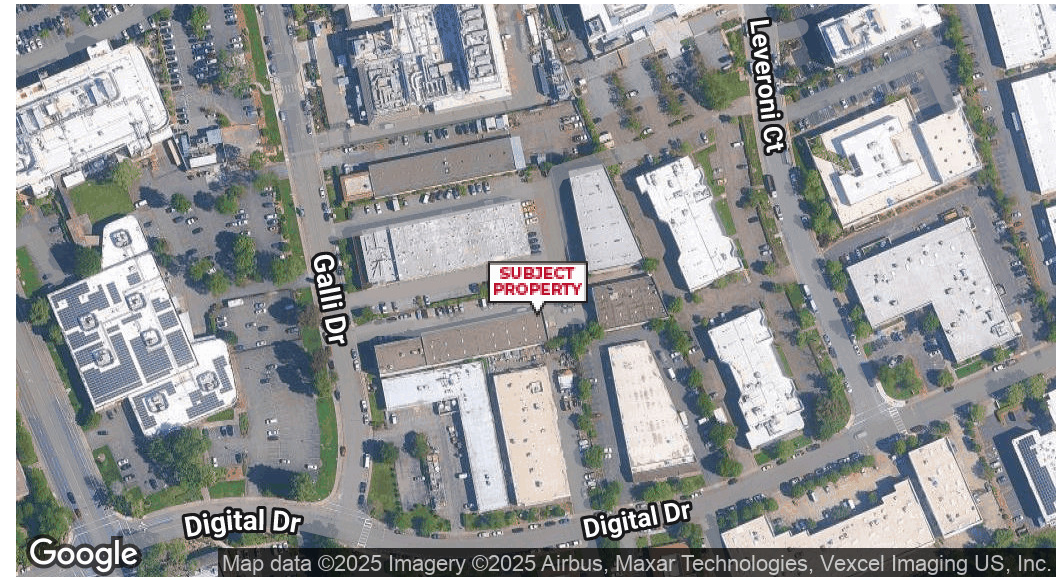
17 E. Sir Francis Drake Blvd., Suite 203 | Larkspur, CA 94939 | <https://www.meridiancommercial.com>

FOR LEASE

Property Summary

14 GALLI DRIVE

Novato, CA 94949



PROPERTY DESCRIPTION

Introducing the best priced office space in all of Marin County. 14 Galli Dr, Novato is located on the 2nd floor with ample natural light, private offices, open space, conference room, en-suite restrooms, and kitchen. The location boasts excellent visibility and accessibility, making it the perfect spot for clients and employees.

PROPERTY HIGHLIGHTS

- 2nd floor office space
- 7 private offices, conference room, kitchen, and open space
- Best priced office in all of Marin County
- Move-in ready
- Tenant pays PG&E and janitorial
- Signage opportunity available

LOCATION DESCRIPTION

Located in the Bel Marin Keys office park of Novato, Marin County. Easy access to Highway 101 and strategic proximity to the nearby cities of San Francisco and beyond make the location highly desirable for businesses. Prominent retail and dining options at Hamilton Marketplace are just moments away and within the business park, providing convenient amenities for employees and clients.

OFFERING SUMMARY

Lease Rate:	\$0.80 SF/month (Gross)
Available SF:	±2,750 SF
Building Size:	±20,980 SF
Property Type:	Office
Zoning:	PD

SAMUEL KO

CA LIC #01894341
(415) 259-9642

sam@meridiancommercial.com



FOR LEASE

Floor Plans

14 GALLI DRIVE

Novato, CA 94949



SAMUEL KO

CA LIC #01894341

(415) 259-9642

sam@meridiancommercial.com



FOR LEASE

Additional Photos

14 GALLI DRIVE

Novato, CA 94949



SAMUEL KO

CA LIC #01894341

(415) 259-9642

sam@meridiancommercial.com



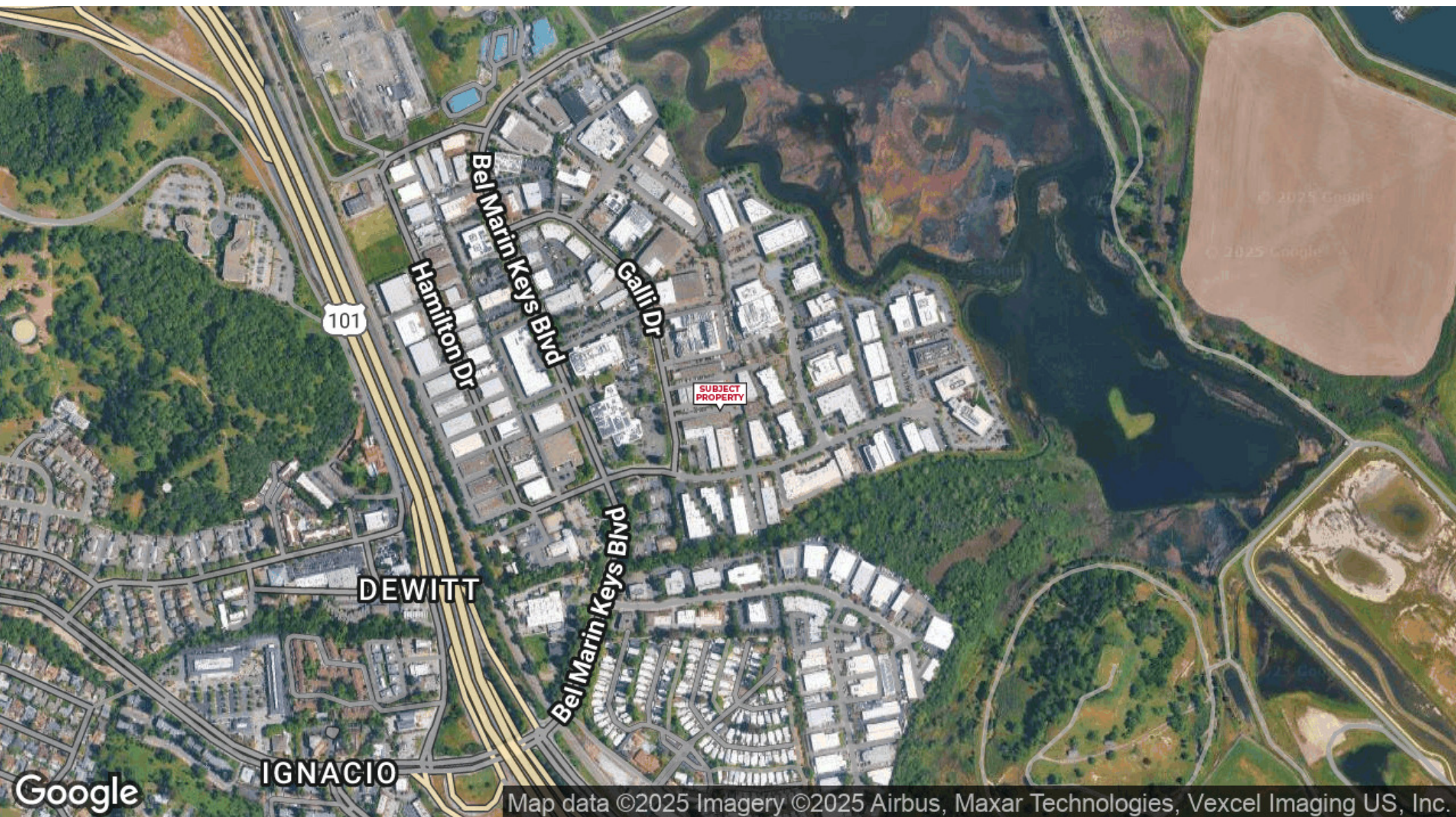
17 E. Sir Francis Drake Blvd., Suite 203 | Larkspur, CA 94939 | <https://www.meridiancommercial.com>

FOR LEASE

Aerial Map

14 GALLI DRIVE

Novato, CA 94949



Map data ©2025 Imagery ©2025 Airbus, Maxar Technologies, Vexcel Imaging US, Inc.

SAMUEL KO

CA LIC #01894341

(415) 259-9642

sam@meridiancommercial.com



17 E. Sir Francis Drake Blvd., Suite 203 | Larkspur, CA 94939 | <https://www.meridiancommercial.com>