

LAND FOR SALE

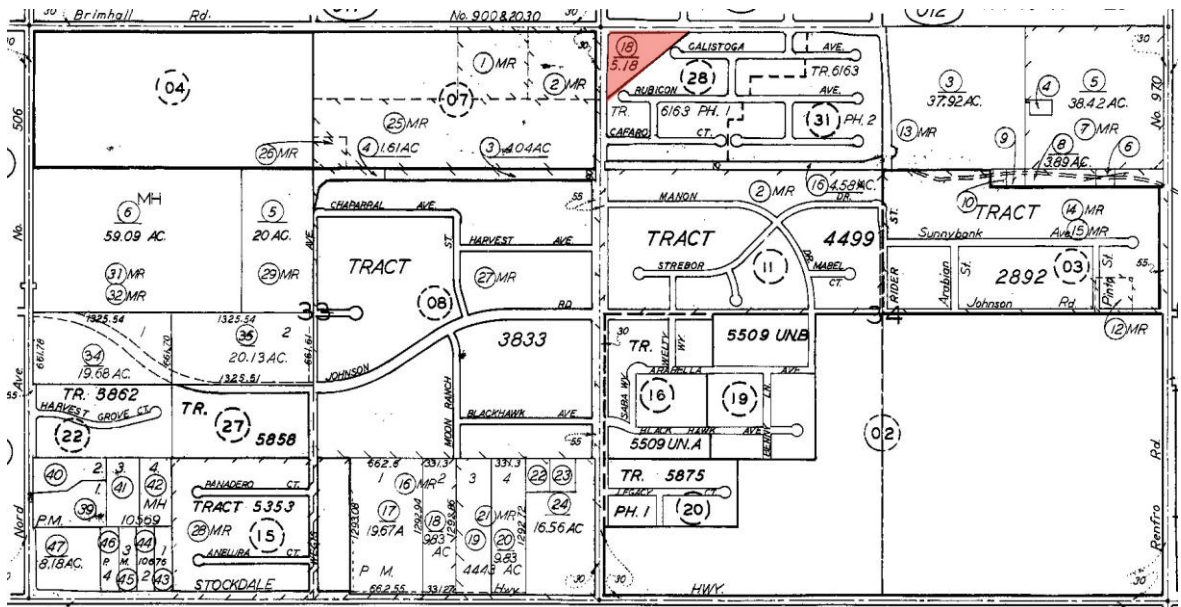
SEC HEATH ROAD & BRIMHALL ROAD
BAKERSFIELD, CALIFORNIA



5.18 ACRES IN NORTHWEST BAKERSFIELD



- **Sales Price:**
\$1,810,000
- **Zoned C-IPD**



For more information, please contact:

VINCENT ROCHE
Executive Director
(661) 633 3817
vincent.roche@cushwake.com
Lic. #01155079

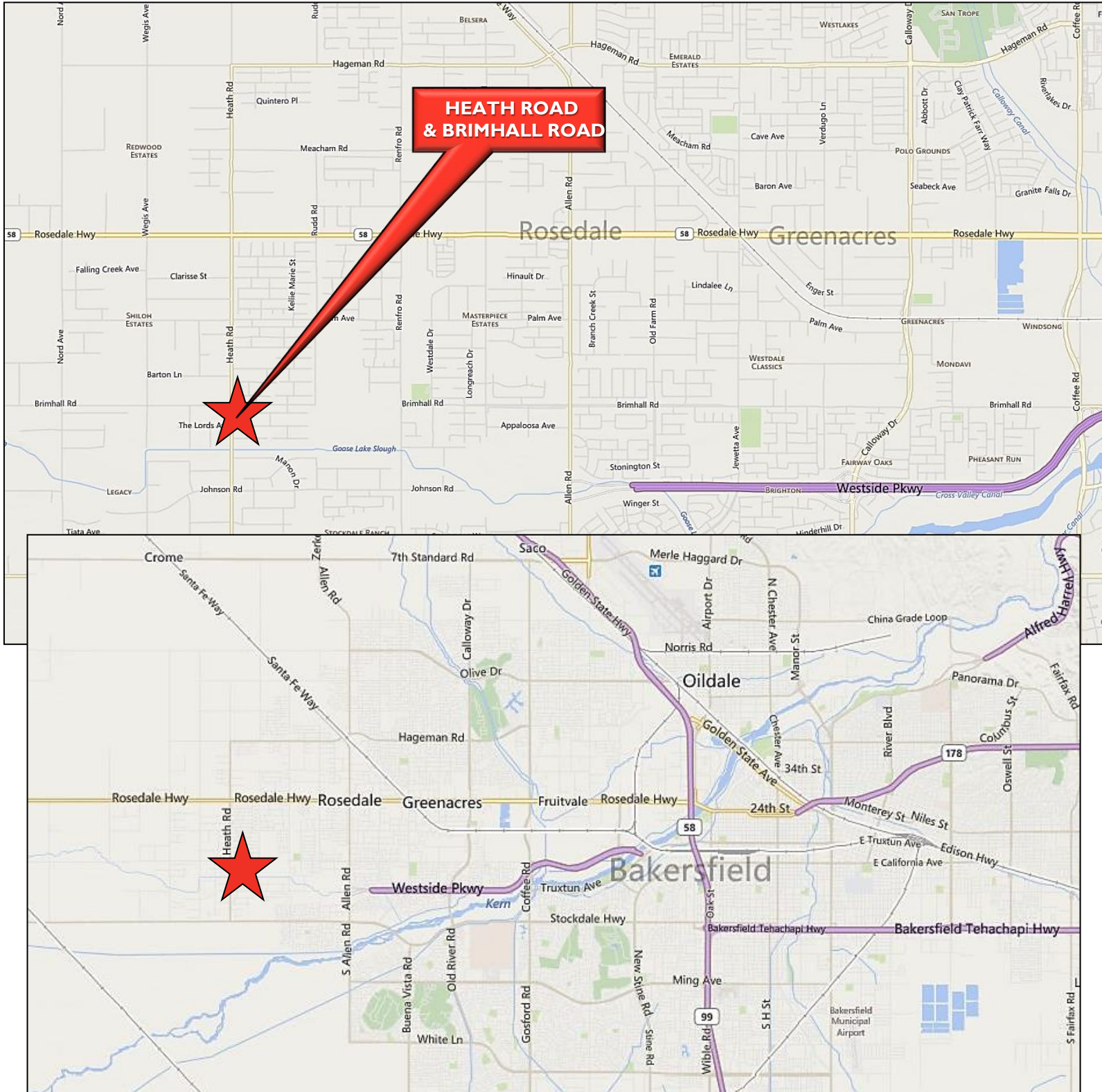
DUANE KEATHLEY
Executive Director
(661) 633 3816
duane.keathley@cushwake.com
Lic. #00935011

CUSHMAN & WAKEFIELD
5060 California Avenue, Suite 1000
Bakersfield, CA 93309
www.cushmanwakefield.com

5.18 ACRES FOR SALE

SEC HEATH ROAD AND BRIMHALL ROAD, BAKERSFIELD, CA

**LAND
FOR SALE**



For more information, please contact:

VINCENT ROCHE
Executive Director
(661) 633 3817
vincent.roche@cushwake.com
Lic. #01155079

DUANE KEATHLEY
Executive Director
(661) 633 3816
duane.keathley@cushwake.com
Lic. #00935011

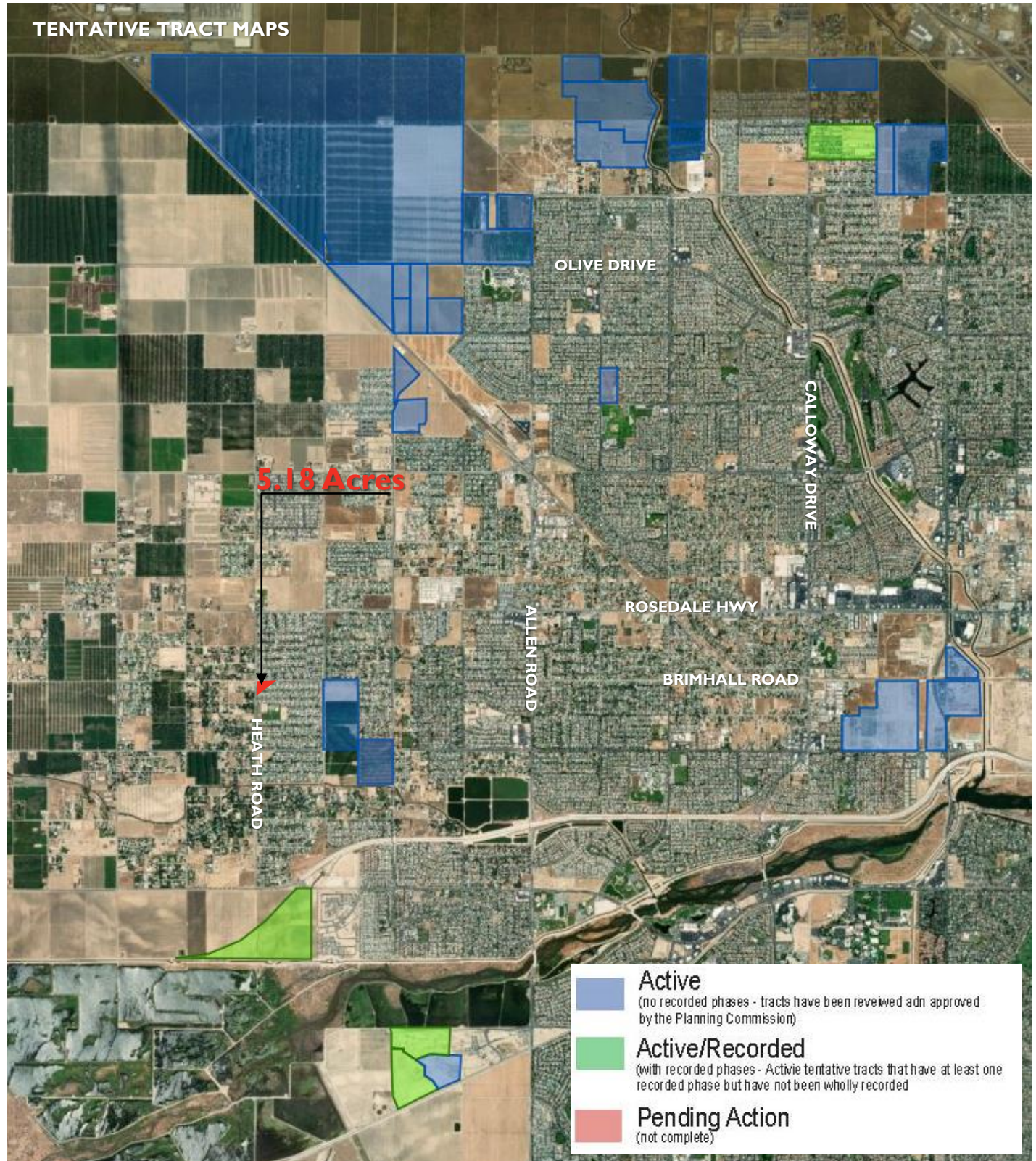


CUSHMAN & WAKEFIELD
5060 California Avenue, Suite 1000
Bakersfield, CA 93309
www.cushmanwakefield.com

5.18 ACRES FOR SALE

SEC HEATH ROAD AND BRIMHALL ROAD, BAKERSFIELD, CA

LAND FOR SALE



For more information, please contact:

VINCENT ROCHE
Executive Director
(661) 633 3817
vincent.roche@cushmanwake.com
Lic. #01155079

DUANE KEATHLEY
Executive Director
(661) 633 3816
duane.keathley@cushmanwake.com
Lic. #00935011

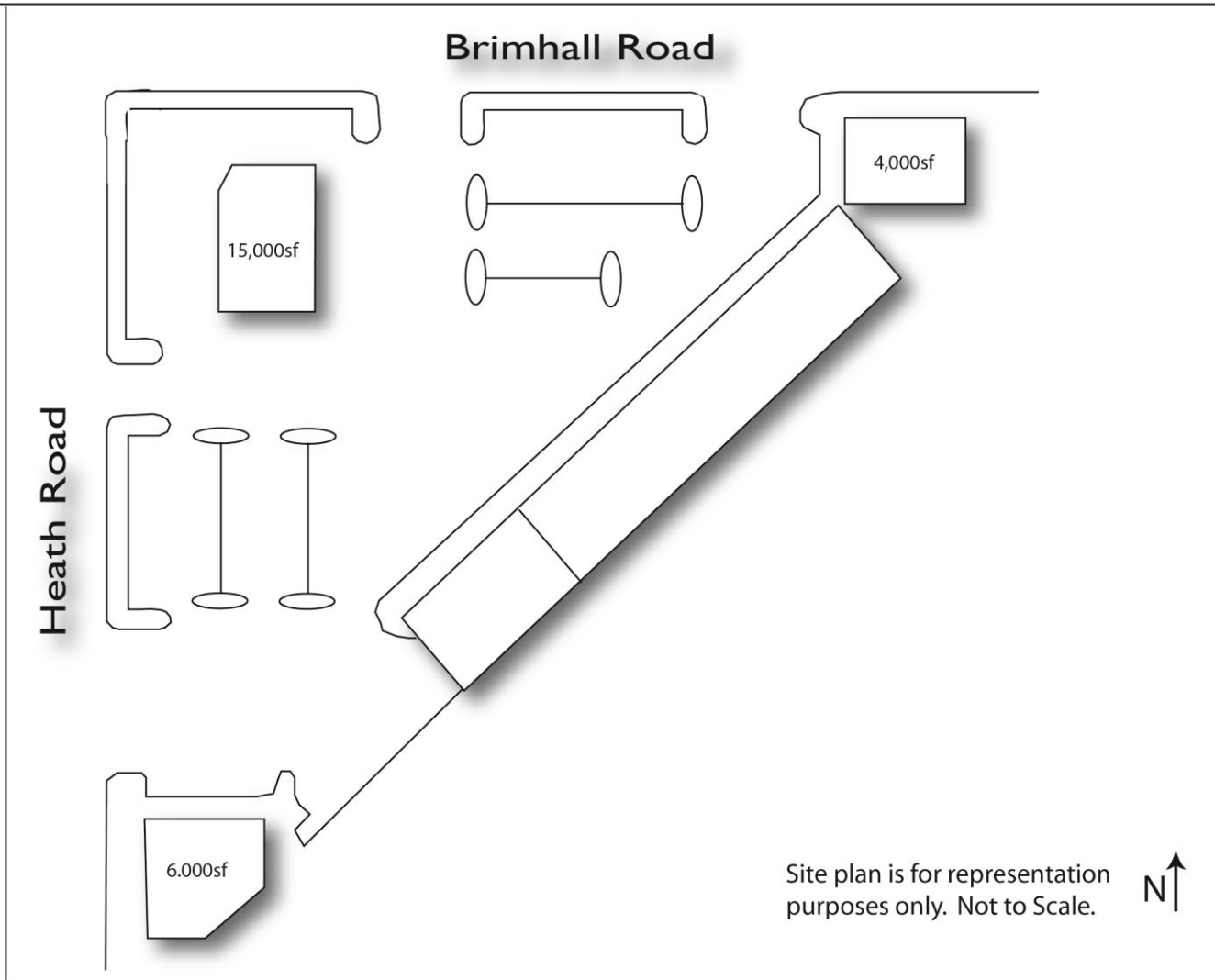


CUSHMAN & WAKEFIELD
5060 California Avenue, Suite 1000
Bakersfield, CA 93309
www.cushmanwakefield.com

5.18 ACRES FOR SALE

SEC HEATH ROAD AND BRIMHALL ROAD, BAKERSFIELD, CA

LAND
FOR SALE



For more information, please contact:

VINCENT ROCHE
Executive Director
(661) 633 3817
vincent.roche@cushwake.com
Lic. #01155079

DUANE KEATHLEY
Executive Director
(661) 633 3816
duane.keathley@cushwake.com
Lic. #00935011



CUSHMAN & WAKEFIELD
5060 California Avenue, Suite 1000
Bakersfield, CA 93309
www.cushmanwakefield.com

SUMMARY PROFILE

2000-2010 Census, 2018 Estimates with 2023 Projections

Calculated using Weighted Block Centroid from Block Groups



Lat/Lon: 35.3689/-119.181

RS1

Heath Rd & Brimhall Rd		1 mi radius	3 mi radius	5 mi radius
POPULATION	2018 Estimated Population	4,913	30,971	91,831
	2023 Projected Population	5,116	32,130	95,343
	2010 Census Population	4,770	26,262	82,434
	2000 Census Population	2,074	14,263	44,052
	Projected Annual Growth 2018 to 2023	0.8%	0.7%	0.8%
	Historical Annual Growth 2000 to 2018	7.6%	6.5%	6.0%
	2018 Median Age	35.1	34.9	33.9
HOUSEHOLDS	2018 Estimated Households	1,548	10,368	30,885
	2023 Projected Households	1,604	10,688	31,861
	2010 Census Households	1,452	8,515	26,830
	2000 Census Households	629	4,341	14,250
	Projected Annual Growth 2018 to 2023	0.7%	0.6%	0.6%
	Historical Annual Growth 2000 to 2018	8.1%	7.7%	6.5%
	2018 Estimated White	74.0%	70.5%	68.2%
RACE AND ETHNICITY	2018 Estimated Black or African American	2.7%	3.1%	3.4%
	2018 Estimated Asian or Pacific Islander	5.8%	8.6%	9.6%
	2018 Estimated American Indian or Native Alaskan	1.3%	1.2%	1.2%
	2018 Estimated Other Races	16.2%	16.6%	17.6%
	2018 Estimated Hispanic	26.9%	27.9%	29.2%
	2018 Estimated Average Household Income	\$198,482	\$158,069	\$139,668
INCOME	2018 Estimated Median Household Income	\$126,726	\$121,101	\$111,121
	2018 Estimated Per Capita Income	\$62,562	\$52,930	\$46,996
	2018 Estimated Elementary (Grade Level 0 to 8)	2.4%	2.7%	2.8%
EDUCATION (AGE 25+)	2018 Estimated Some High School (Grade Level 9 to 11)	6.6%	6.0%	5.8%
	2018 Estimated High School Graduate	25.4%	21.0%	20.9%
	2018 Estimated Some College	25.3%	23.7%	25.7%
	2018 Estimated Associates Degree Only	9.6%	10.7%	10.6%
	2018 Estimated Bachelors Degree Only	19.9%	22.5%	22.4%
	2018 Estimated Graduate Degree	10.7%	13.5%	11.9%
	2018 Estimated Total Businesses	42	477	2,270
BUSINESS	2018 Estimated Total Employees	199	4,052	21,631
	2018 Estimated Employee Population per Business	4.8	8.5	9.5
	2018 Estimated Residential Population per Business	118.0	64.9	40.5

This report was produced using data from private and government sources deemed to be reliable. The information herein is provided without representation or warranty.