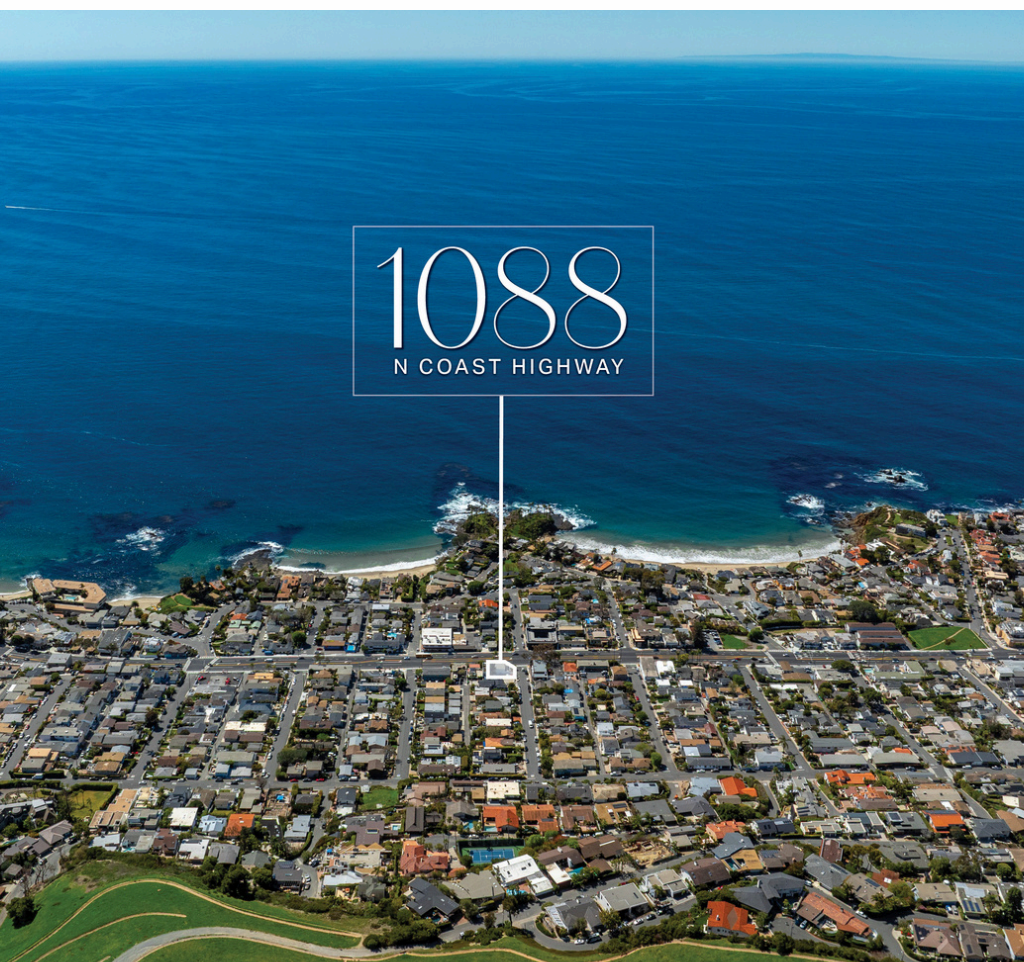
 **JLL** SEE A BRIGHTER WAY

For sublease

Office space
1,700 RSF available



1088 N. Coast Highway, Suite 200
Laguna Beach, CA 92651

Property highlights

- Dedicated parking located on PCH
- Proximity to walkable amenities
- 13-minute walk or 2-minute drive away from Downtown Laguna Beach
- Easily accessible from surrounding communities

Space Details

1,700 RSF

Space Available

Through 2/28/2029

Term

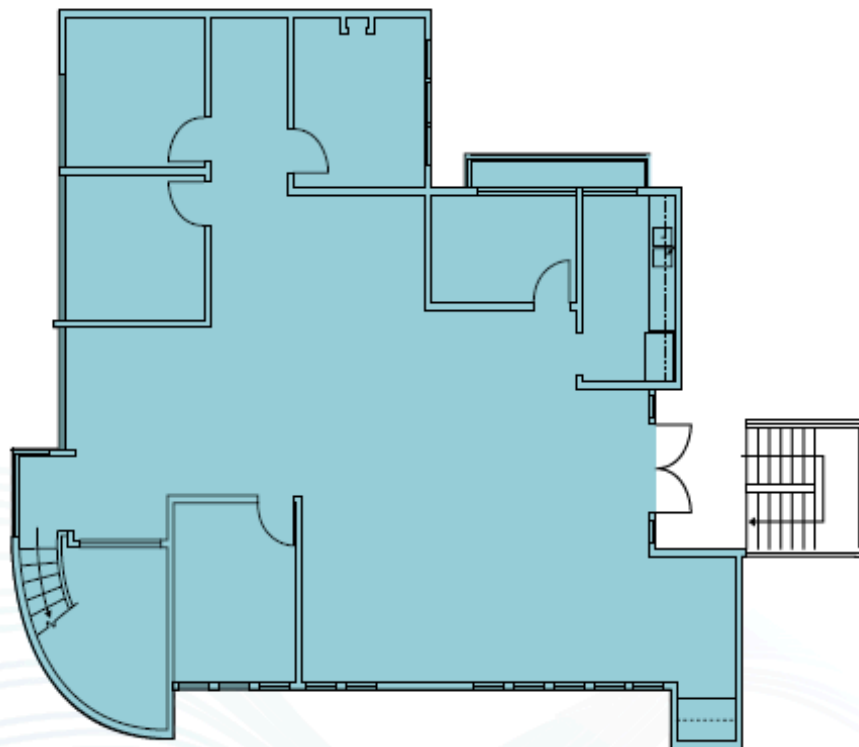
Now

Available

Ram Mann
Vice President
ram.mann@jll.com
+1 831 247 7920
License #: 02129997
jll.com

Jones Lang LaSalle Brokerage, Inc. License #: 01856260

Floorplan | Suite 200: 1,700 RSF



Although information contained herein has been obtained from sources deemed reliable, neither JLL nor any of its clients makes any guarantees or representations, express or implied, as to the completeness or accuracy of such information. Any projections, opinions, assumptions or estimates used are for example only. Neither JLL nor any of its clients accepts any liability for loss resulting from reliance on such information. There may be material differences between projected results and actual results. Any property offered for sale or lease may be withdrawn without notice. If the recipient of this information has signed a confidentiality agreement regarding this matter, this information is subject to the terms of that agreement. Copyright © 2025 Jones Lang LaSalle IP, Inc. All rights reserved.