



Freestanding Medical Office Building

154 Bogle Office Park Dr
Somerset, Kentucky 42503

Property Highlights

- +/-10,000 SF freestanding medical office building
- +/-5,000 SF entry level and +/-5,000 SF lower level
- Well suited for an owner-occupant
- Existing layout includes a mix of private offices and meeting rooms
- Great location with close proximity to Lake Cumberland Regional Hospital
- Close proximity to medical, office, retail and restaurants make this site an ideal medical/office location
- 43 parking spaces
- Zoned Commercial
- Sale Price: \$1,500,000

Offering Summary

Sale Price:	\$1,500,000
Building Size:	10,000 SF
Lot Size:	1.025 Acres

For More Information



Zach Smith, CCIM

Senior Associate
O: 859 224 2000
zachsmith@naiisaac.com



Jordan Smith, MRED

Associate
O: 859 224 2000
jsmith@naiisaac.com



Paul Ray Smith, Jr

Executive Vice President
O: 859 422 4401
prsmith@naiisaac.com | KY #183529



Commercial Real Estate Services, Worldwide.

For Sale

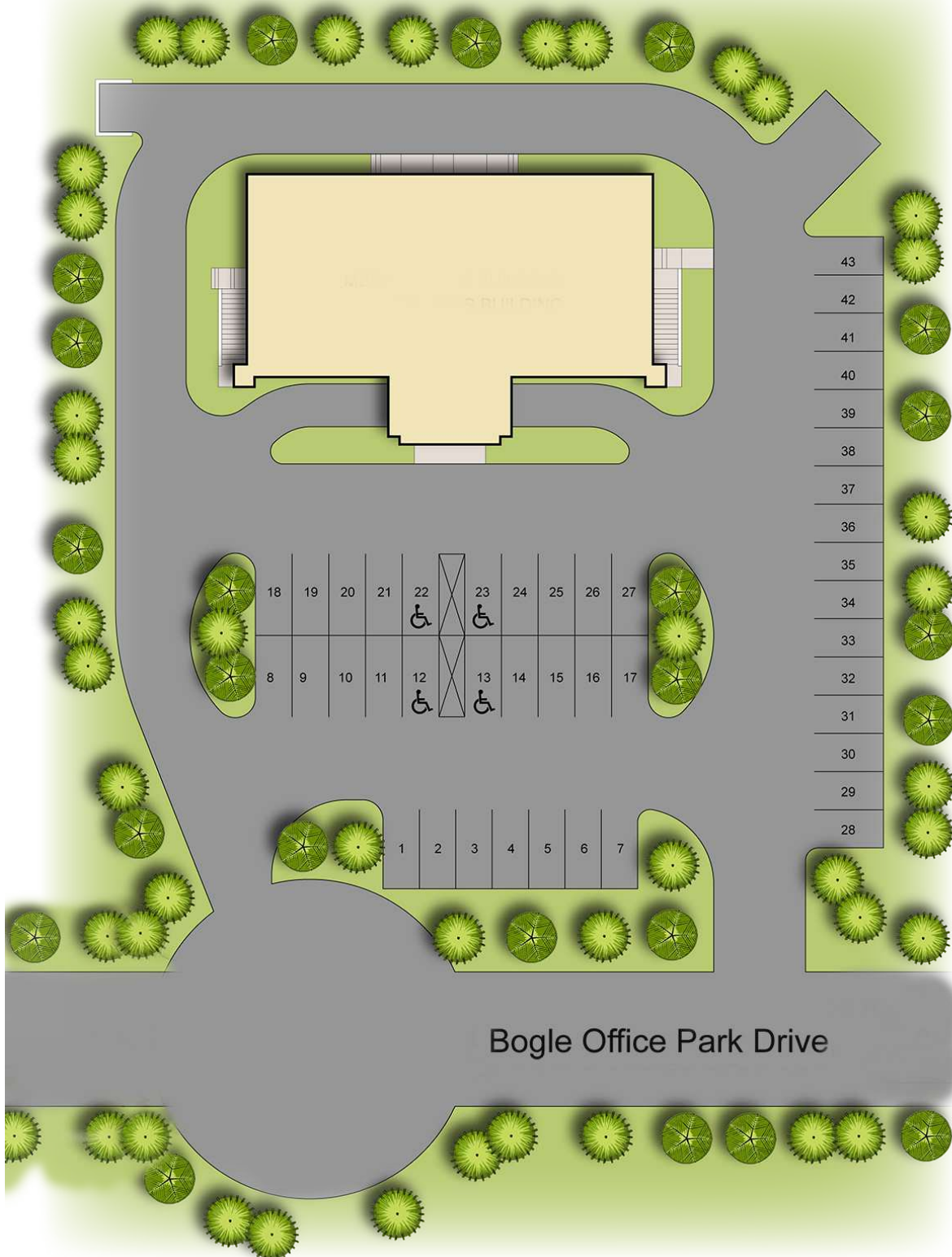
10,000 SF | \$1,500,000

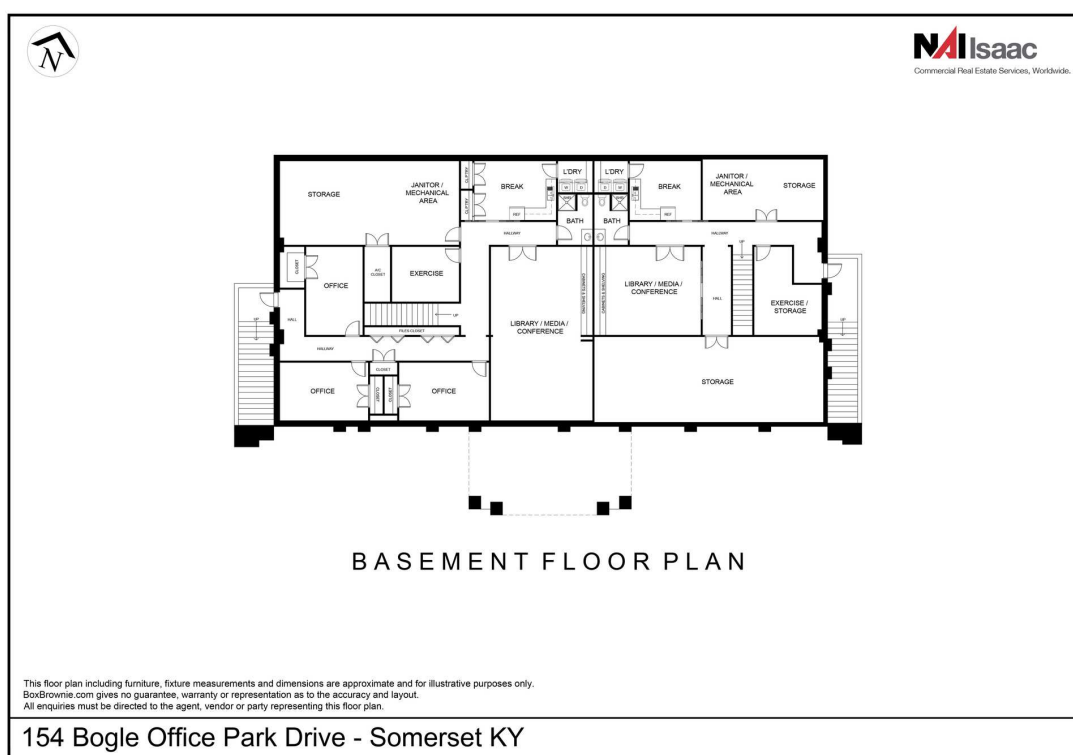
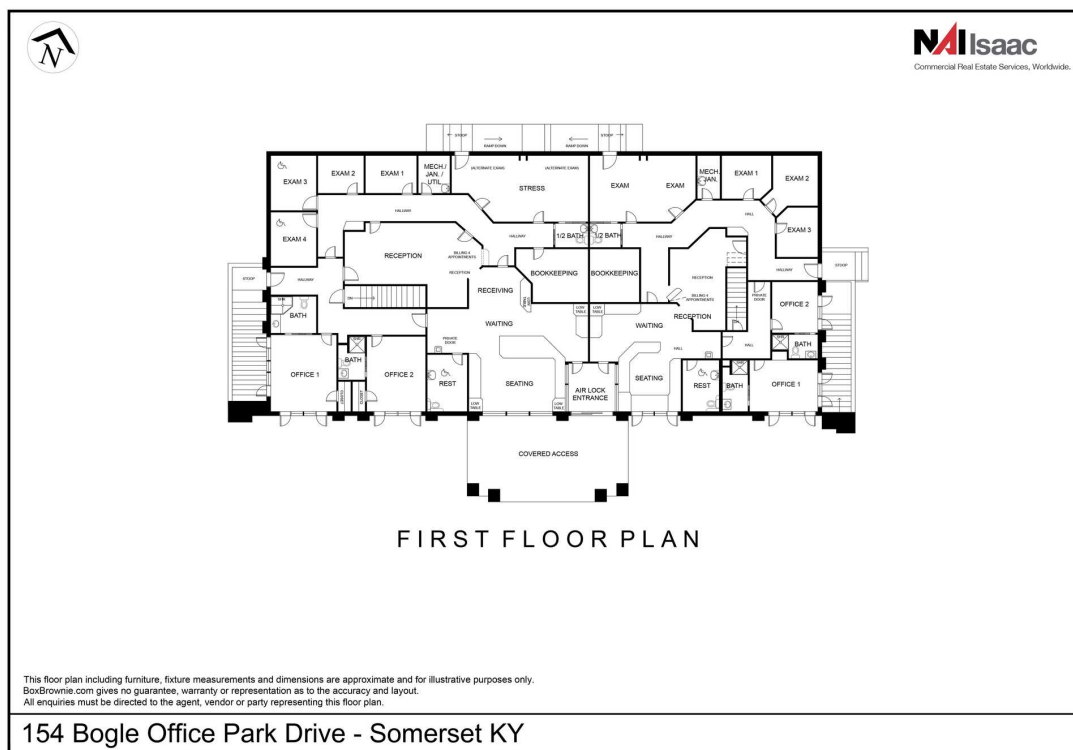
Medical Office Building

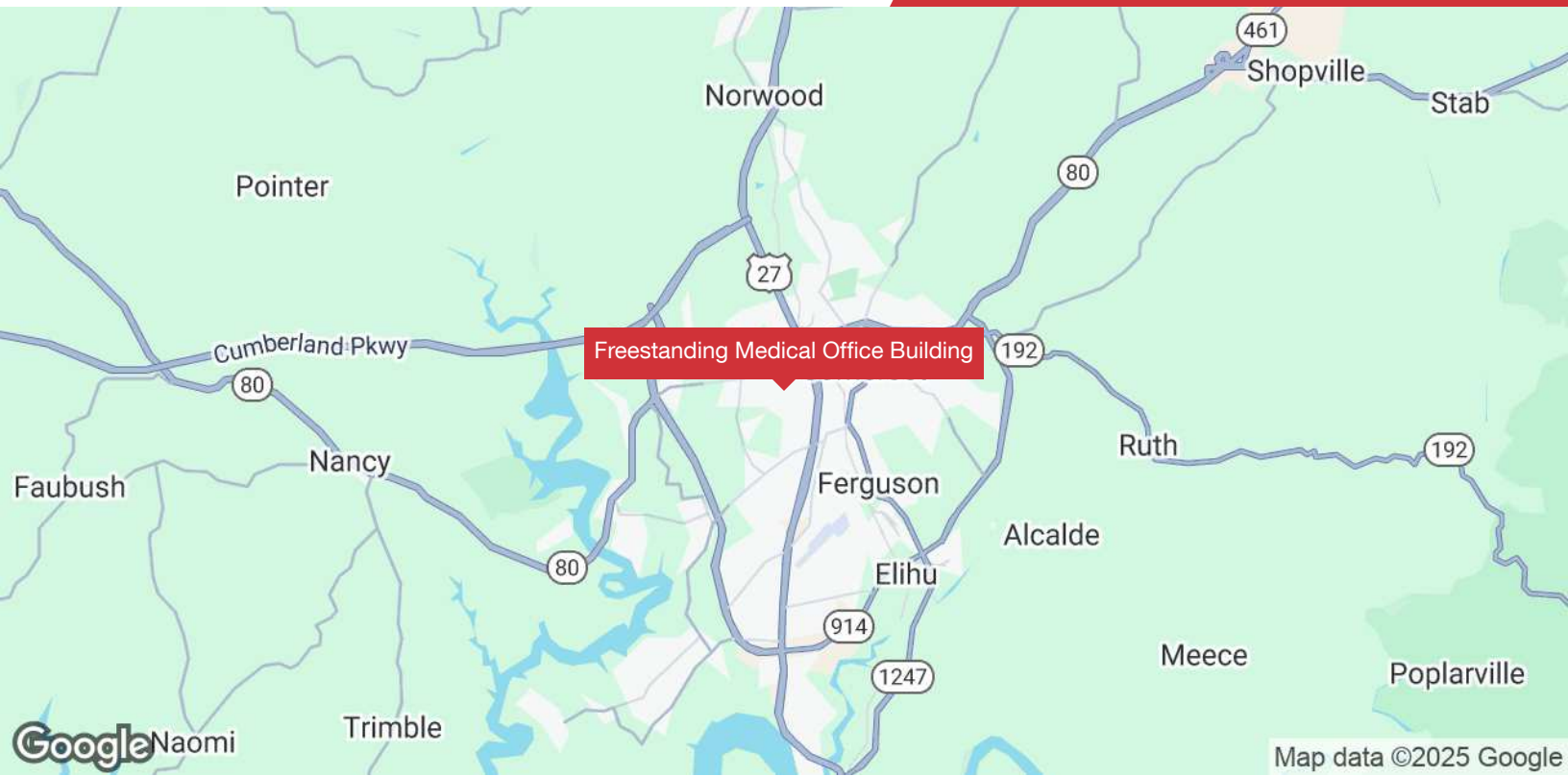


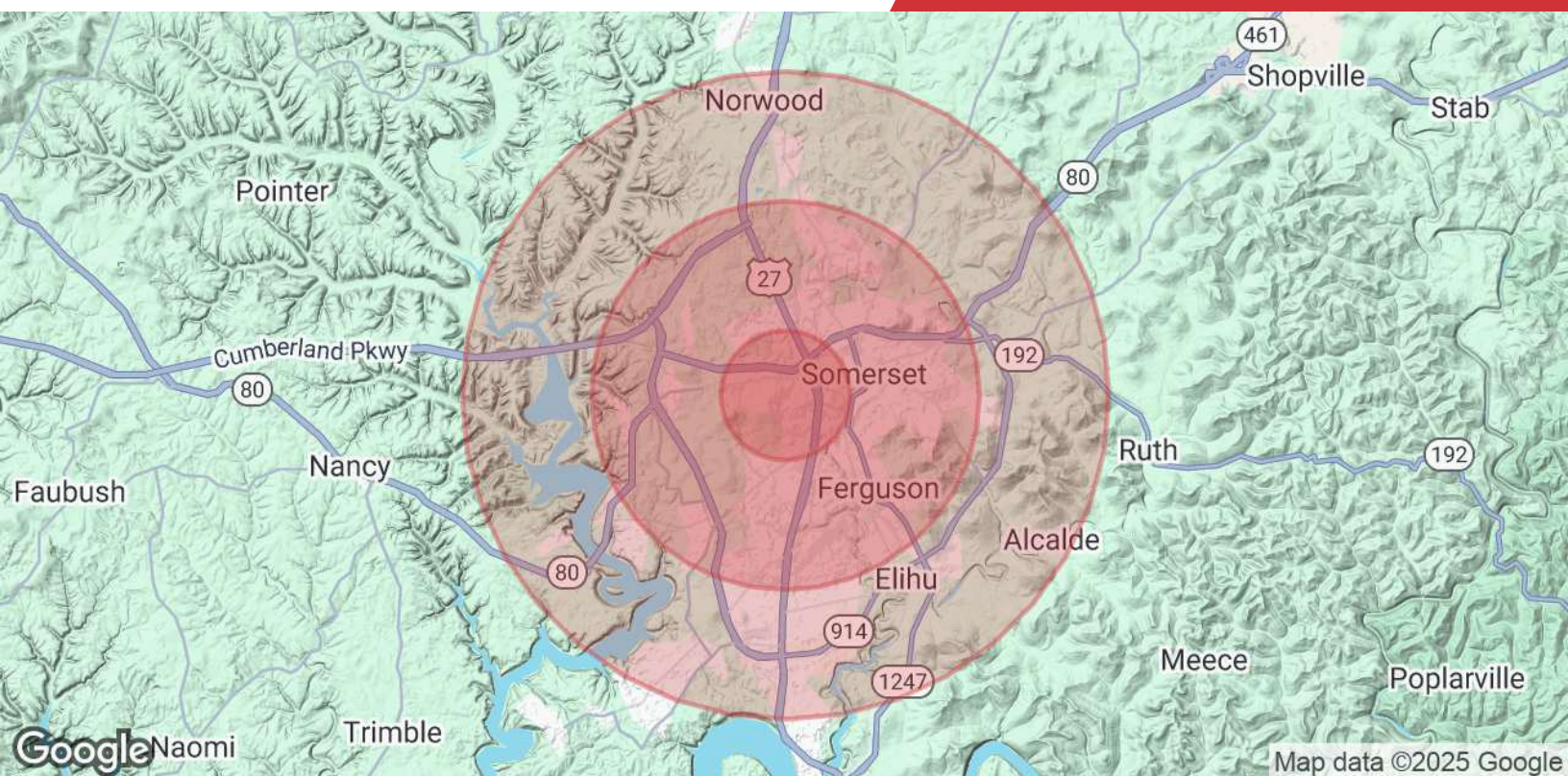
NO WARRANTY OR REPRESENTATION, EXPRESS OR IMPLIED, IS MADE AS TO THE ACCURACY OF THE INFORMATION CONTAINED HEREIN, AND THE SAME IS SUBMITTED SUBJECT TO ERRORS, OMISSIONS, CHANGE OF PRICE, RENTAL OR OTHER CONDITIONS, PRIOR SALE, LEASE OR FINANCING, OR WITHDRAWAL WITHOUT NOTICE, AND OF ANY SPECIAL LISTING CONDITIONS IMPOSED BY OUR PRINCIPALS NO WARRANTIES OR REPRESENTATIONS ARE MADE AS TO THE CONDITION OF THE PROPERTY OR ANY HAZARDS CONTAINED THEREIN ARE ANY TO BE IMPLIED.

771 Corporate Drive, Suite 500
Lexington, KY 40503
859 224 2000 tel
naiisaac.com









Population

	1 Mile	3 Miles	5 Miles
Total Population	2,888	19,070	32,621
Average Age	43	43	42
Average Age (Male)	39	40	40
Average Age (Female)	46	45	44

Households & Income

	1 Mile	3 Miles	5 Miles
Total Households	1,078	7,810	13,235
# of Persons per HH	2.7	2.4	2.5
Average HH Income	\$47,278	\$67,076	\$69,796
Average House Value	\$191,234	\$231,285	\$231,203

Demographics data derived from STDB 2025