



SYMMETRYCRG
COMMERCIAL REALTY GROUP

DY
REALTY GROUP



38-17 CRESCENT STREET

LONG ISLAND CITY, QUEENS, NY 11101

PROPERTY OVERVIEW

PRICE INFORMATION

Call or Email

Asking Price

9,800 SF | 2-Story

Total Building

Ground Floor	5,500 SF Warehouse
Second Floor	4,300 SF Executive Offices
Loading	2 Drive-in Doors
Ceiling	±13'
Zoning	M1-2 / R5D
Heat	Gas
Power	400 Amp / 3 Phase
Subway	7 N W R E M F
Construction Type	Fireproof
Sprinkler System	Wet
Location	Minutes to the 59th St Bridge, Tri-Boro Bridge, Midtown Tunnel, Long Island Expressway, Grand Central Parkway and Brooklyn Queens Expressway

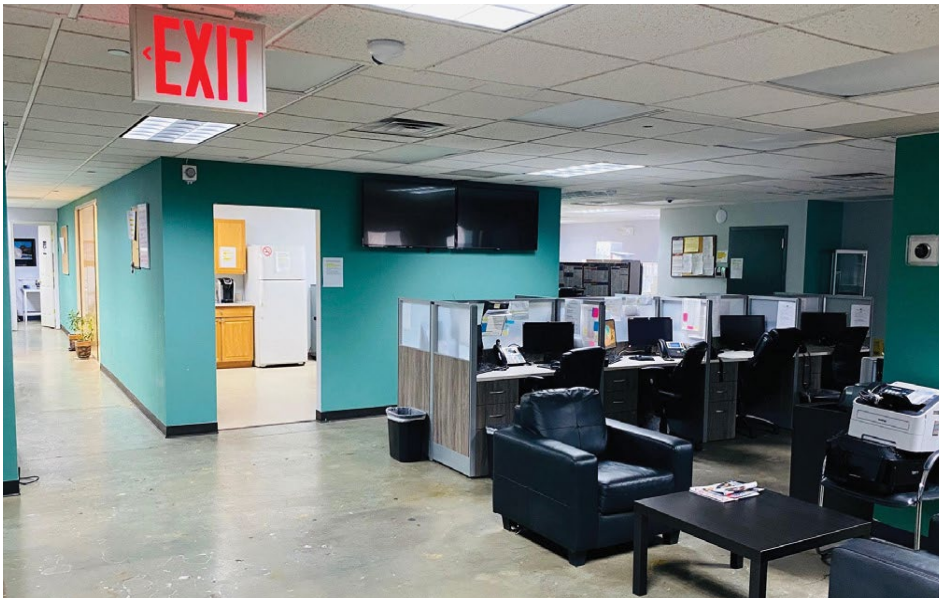
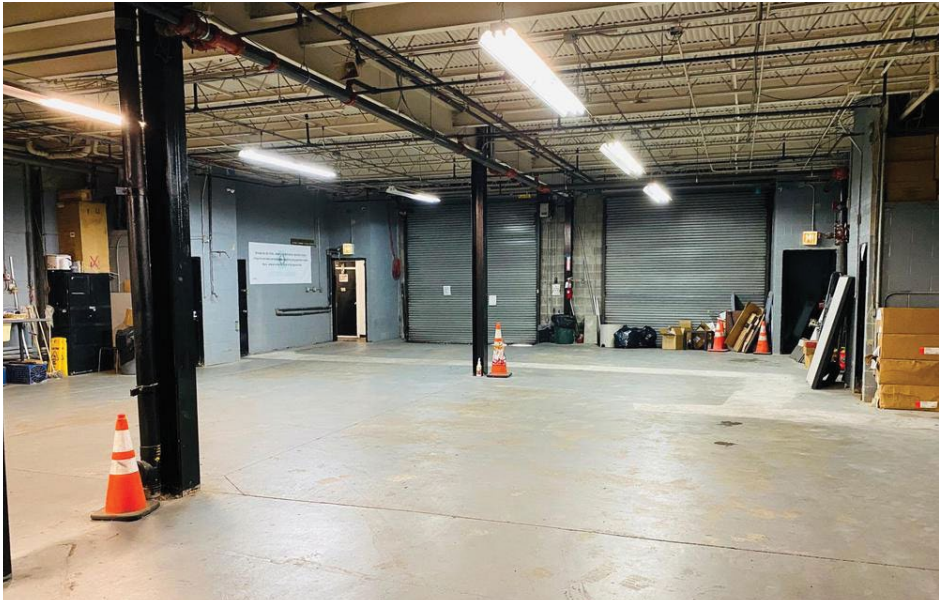
PROPERTY DESCRIPTION

SymmetryCRG and DY Realty Group, LLC have been retained as the co-exclusive agents for the sale of 38-17 Crescent Street in Long Island City, Queens. This property spans 9,800 square feet in total, featuring a 5,500-square-foot warehouse on the ground floor and 4,300 square feet of executive office space on the second floor. The warehouse boasts a 13-foot ceiling height, gas heating, a wet sprinkler system, 400 amps of power, and dual drive-in loading doors.

Ideally positioned in the heart of Long Island City, the building is just blocks from the 59th Street Bridge, offering excellent access to major routes such as the Long Island Expressway, Brooklyn-Queens Expressway, Midtown Tunnel, and Tri-Boro Bridge. Moreover, it is conveniently located less than half a mile from multiple subway lines, including the 7, N, W, R, E, M, and F.

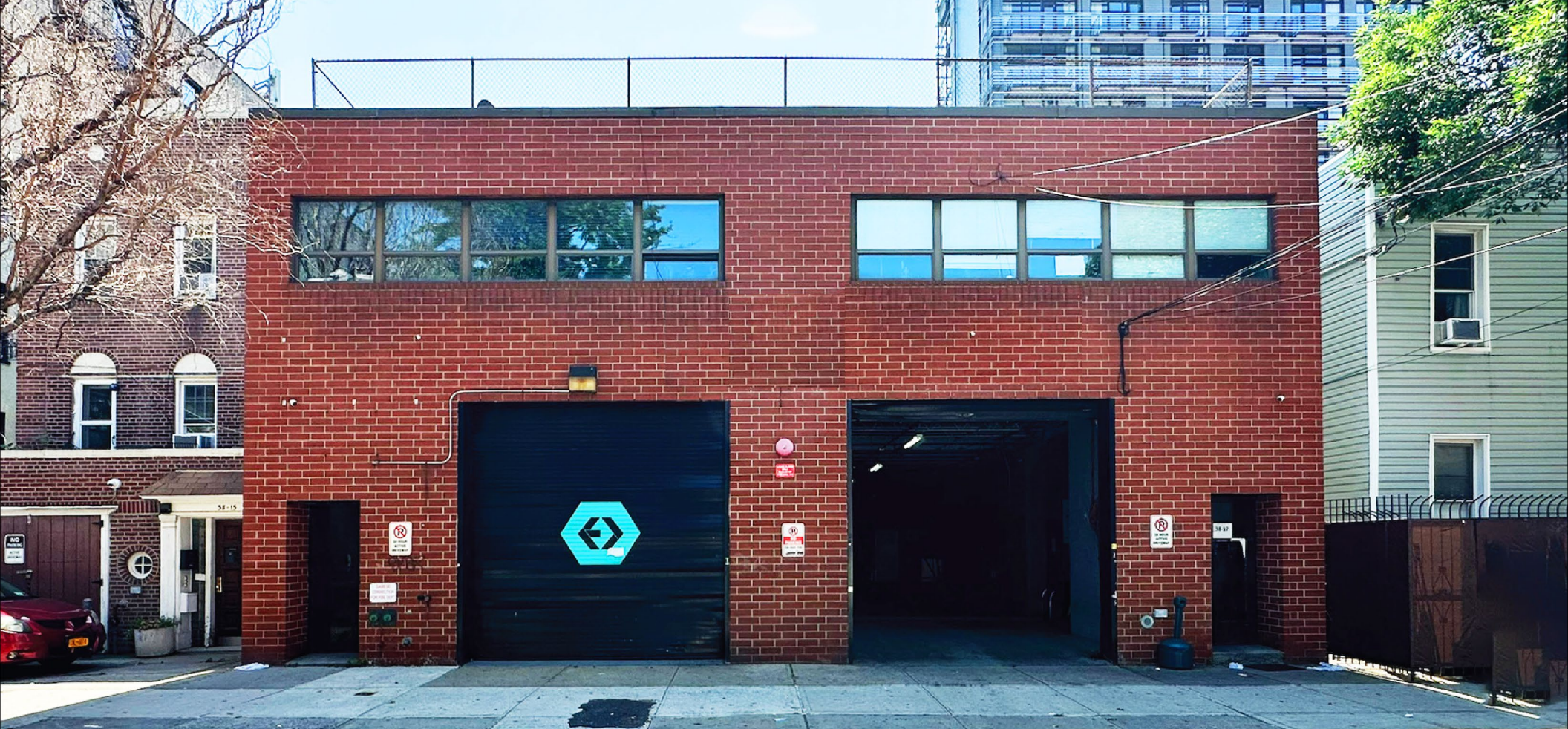


PROPERTY IMAGES



AERIAL MAP





38-17 CRESCENT ST, LONG ISLAND CITY, NY 11101

EXCLUSIVE AGENTS:

Michael T. Maunsell

Vice President | SymmetryCRG

(e): Michaelt@symcrg.com

(p): (347) 234-7333



SYMMETRYCRG
COMMERCIAL REALTY GROUP

RANEE JABER

Partner | DY Realty Group, LLC.

(e): rjaber@dyrealty.com

(p): (917) 727-4729

