

PREMIER SINGLE STORY OFFICE PARK FOR LEASE



LAURELWOOD CORPORATE CENTER VOORHEES, NJ

Evan Zweben
Executive Vice President
856.261.5548
evan.zweben@wolfcre.com



The foregoing information was furnished to us by sources which we deem to be reliable, but no warranty or representation is made as to the accuracy thereof.
Subject to correction of errors, omissions, change of price, prior sale or withdrawal from market without notice.

PROPERTY DESCRIPTION

Location: 1101, 1103, 1105 Laurel Oak Road
Voorhees, NJ 08043

Size/SF Available:

1101 Laurel Oak:
Suite 100: 5,420 SF
Suite 120: 3,552 SF

1103 Laurel Oak:
Suite 146: 2,045 SF

1105 Laurel Oak: LEASED

Lease Price: Call for information

PROPERTY AREA/HIGHLIGHTS

- Single-story office suites available for lease
- Outdoor break areas
- High-end finishes throughout with full height vision panels and solid-core doors on all private offices
- Direct access from Voorhees Township bikeway network
- Adjacent to Voorhees Corporate Center
- Close proximity to medical offices, restaurants, retailers, fitness centers, etc.
- Quick access to Routes 30 & 73, and I-295

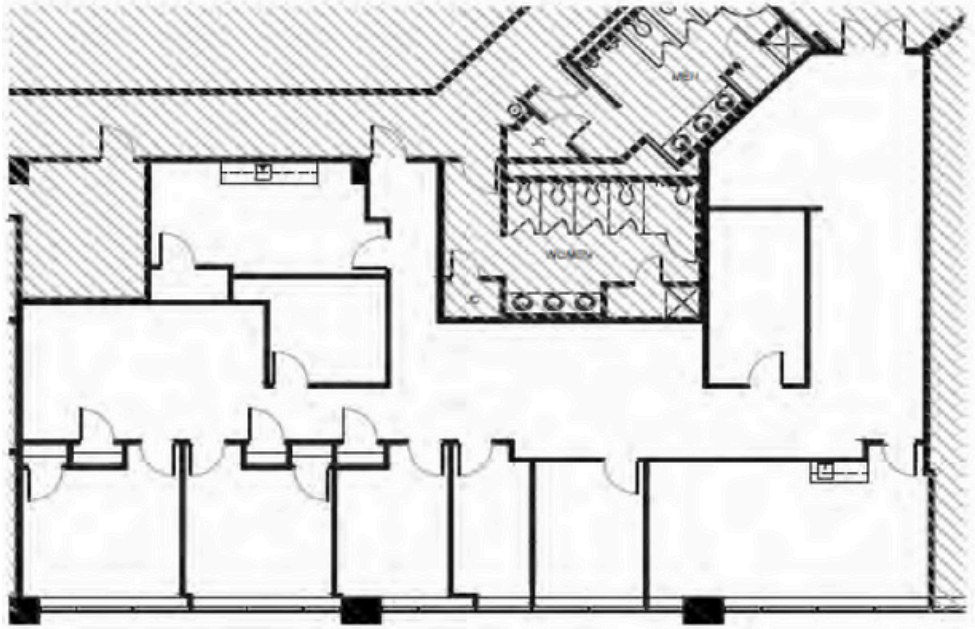
AERIAL MAP



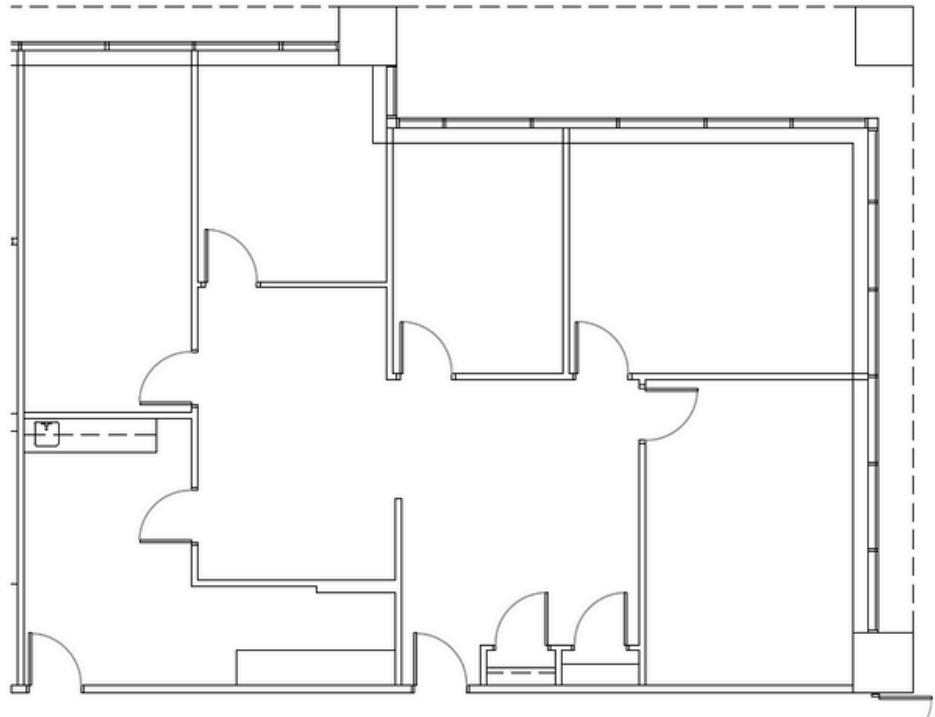
The foregoing information was furnished to us by sources which we deem to be reliable, but no warranty or representation is made as to the accuracy thereof. Subject to correction of errors, omissions, change of price, prior sale or withdrawal from market without notice.

FLOOR PLANS

1101 Laurel Oak
Suite 120: 3,552 SF



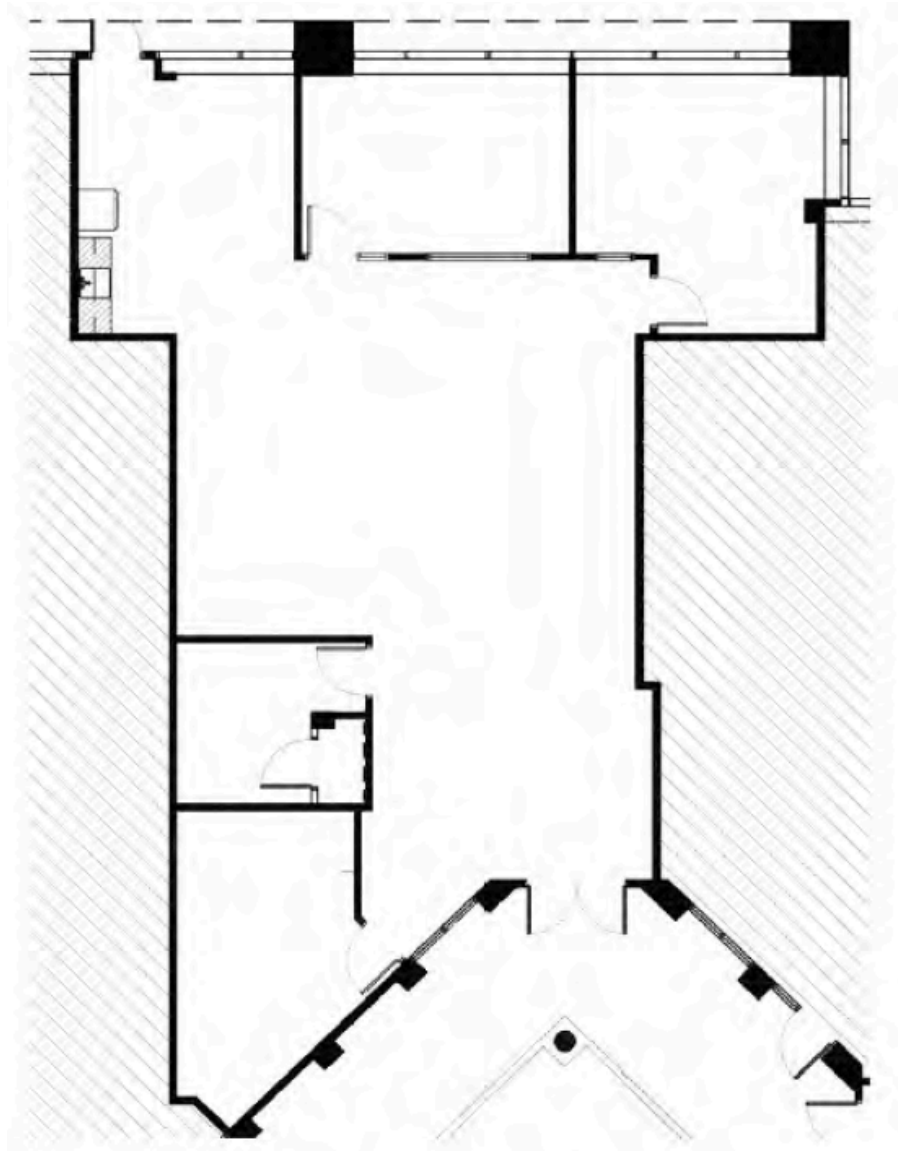
1103 Laurel Oak
Suite 146: 2,045 SF



The foregoing information was furnished to us by sources which we deem to be reliable, but no warranty or representation is made as to the accuracy thereof. Subject to correction of errors, omissions, change of price, prior sale or withdrawal from market without notice.

FLOOR PLANS

1105 Laurel Oak
Suite 136: 2,213 SF



The foregoing information was furnished to us by sources which we deem to be reliable, but no warranty or representation is made as to the accuracy thereof. Subject to correction of errors, omissions, change of price, prior sale or withdrawal from market without notice.