

Menorah Medical Center Medical Office Building

5701 W 119th St.
Overland Park, KS 66209



- Newly available, fully built out office suites
- \$28.50 PSF Gross lease rate
- Building connected directly to 164-bed hospital currently undergoing a \$65 million expansion
- Tenant improvement allowance available
- Centrally located in Johnson County with easy access from I-435 corridor
- Surrounding retail amenities include Town Center Shops, Park Place Shops, Hawthorne Plaza and Town Center Crossing

RJ Trowbridge

Executive Vice President
+1 913 469 4637
rj.trowbridge@jll.com

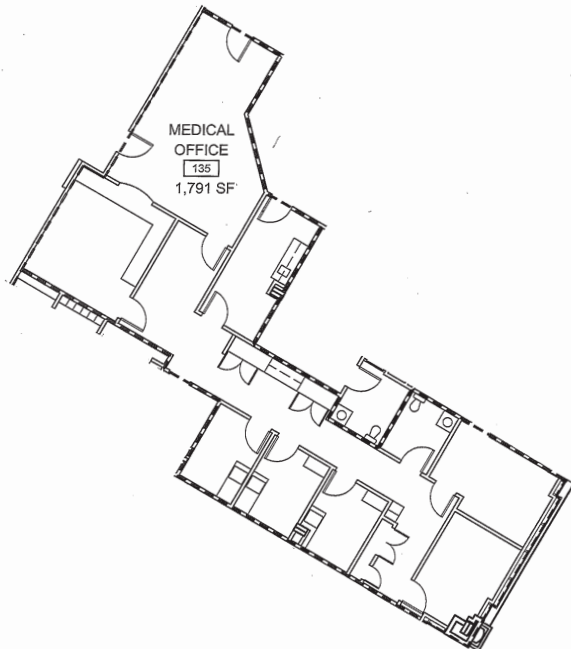
Avery Comeau

Associate
+1 913 927 9252
avery.comeau@jll.com

FLOOR PLANS

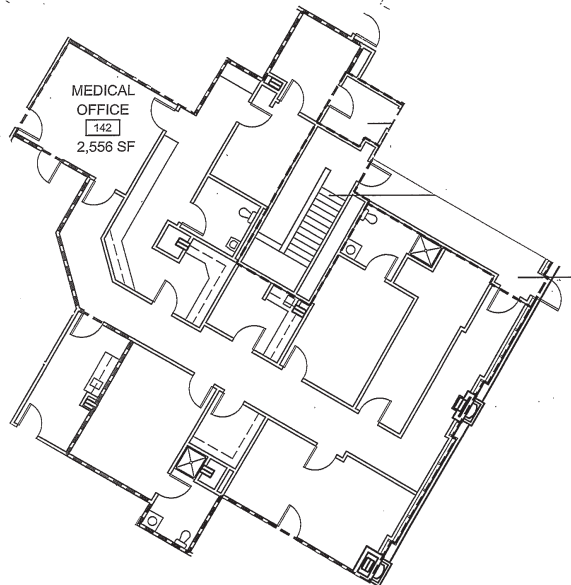
Suite 135

1,791 RSF available



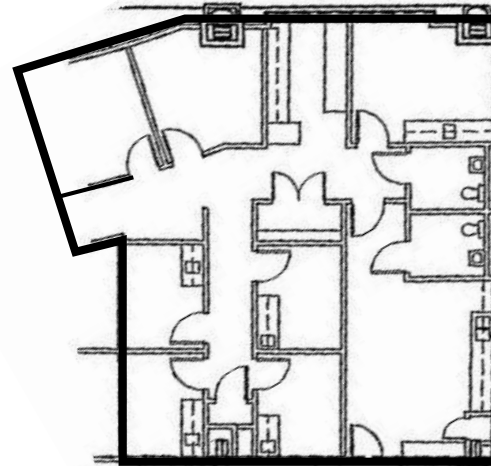
Suite 142

2,556 RSF available



Suite 242

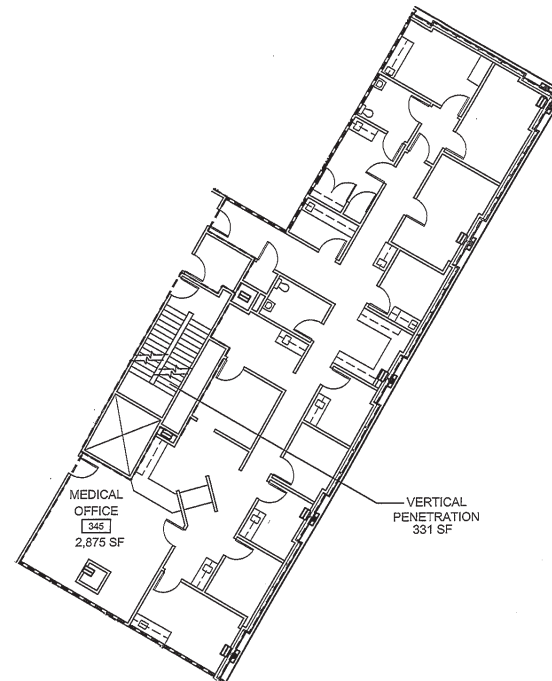
2,065 RSF available



Suite 345

2,875 RSF available

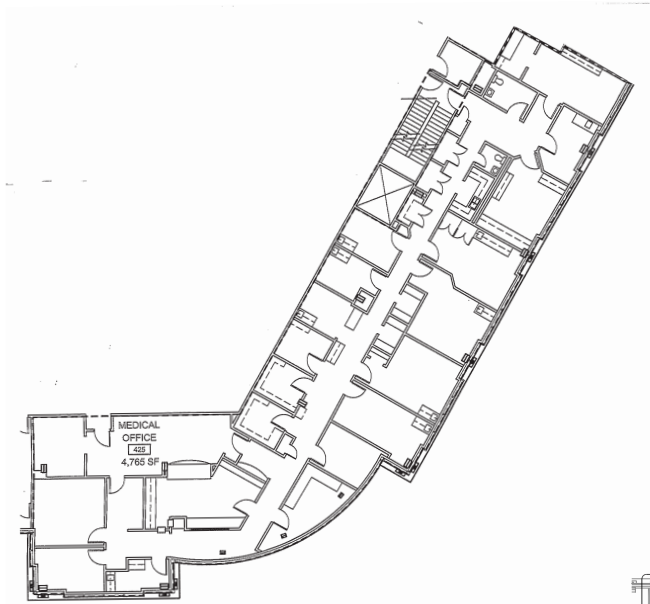
Refreshed in 2022



FLOOR PLANS

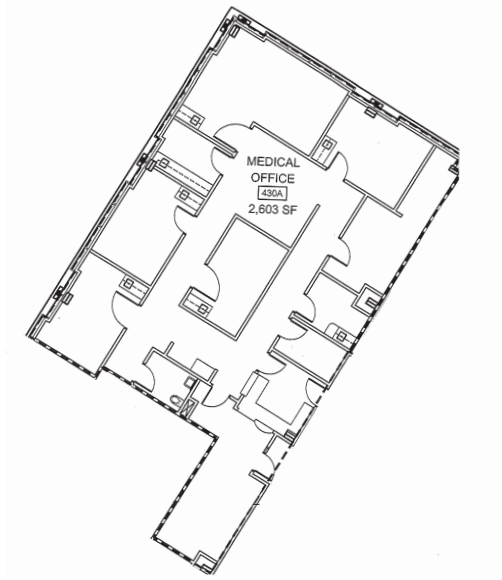
Suite 425

4,765 RSF available



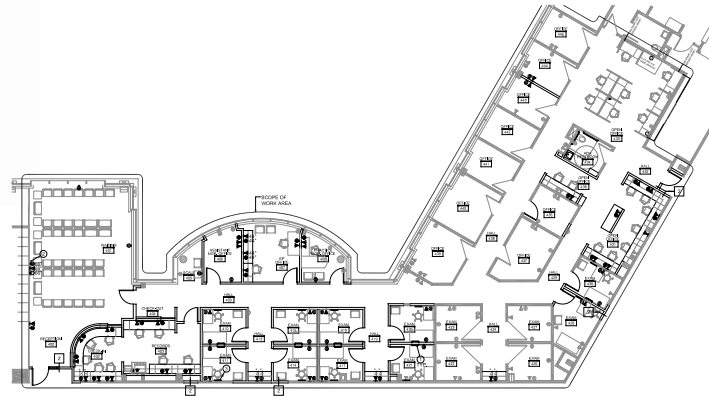
Suite 440

2,603 RSF available



Suite 430

6,650 RSF available



AERIAL



Aspria Campus

Town Center

119th St.

Menorah
MOB

Hawthorne Plaza

Menorah Medical Center

Nall Ave.



For more information, contact:

RJ Trowbridge
Executive Vice President
+1 913 469 4637
rj.trowbridge@jll.com

Avery Comeau
Associate
+1 913 927 9252
avery.comeau@jll.com

*Although information has been obtained from sources deemed reliable, JLL does not make any guarantees, warranties or representations, express or implied, as to the completeness or accuracy as to the information contained herein. Any projections, opinions, assumptions or estimates used are for example only. There may be differences between projected and actual results, and those differences may be material. JLL does not accept any liability for any loss or damage suffered by any party resulting from reliance on this information. If the recipient of this information has signed a confidentiality agreement with JLL regarding this matter, this information is subject to the terms of that agreement.
©2025 Jones Lang LaSalle IP, Inc. All rights reserved.

