



JOE MARTIGNETTI
650.847.2000
jmartignetti@ventanaps.com
DRE# 01116935

The information contained herein has been given to us by the owner of the property or other sources we deem reliable. We have no reason to doubt its accuracy, but we do not guarantee it. All information should be verified prior to purchase or lease. No warranty or representation, expressed or implied, is made as to the accuracy of the information contained herein.

441 Emerson St.

Property Highlights

AVAILABLE NOW

3,614 SQFT Total

2,012 SQFT Ground Floor

1,602 SQFT Mezzanine

Long Term Lease Available

Vibrant Downtown Location

Large Street Facing Window Line

Ample Parking in Nearby Parking Lots

Walking Distance to CalTrain & Stanford

In-Person Tour Available



JOE MARTIGNETTI

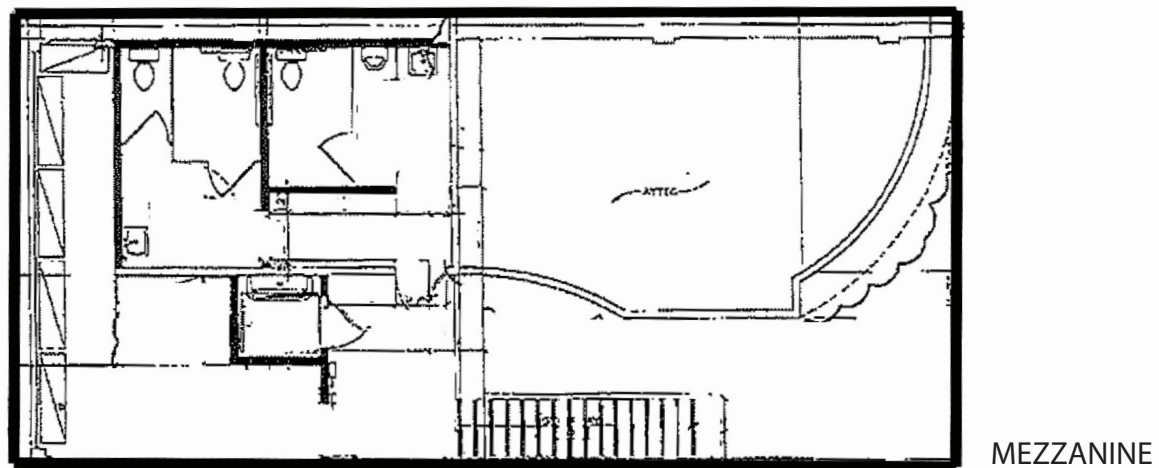
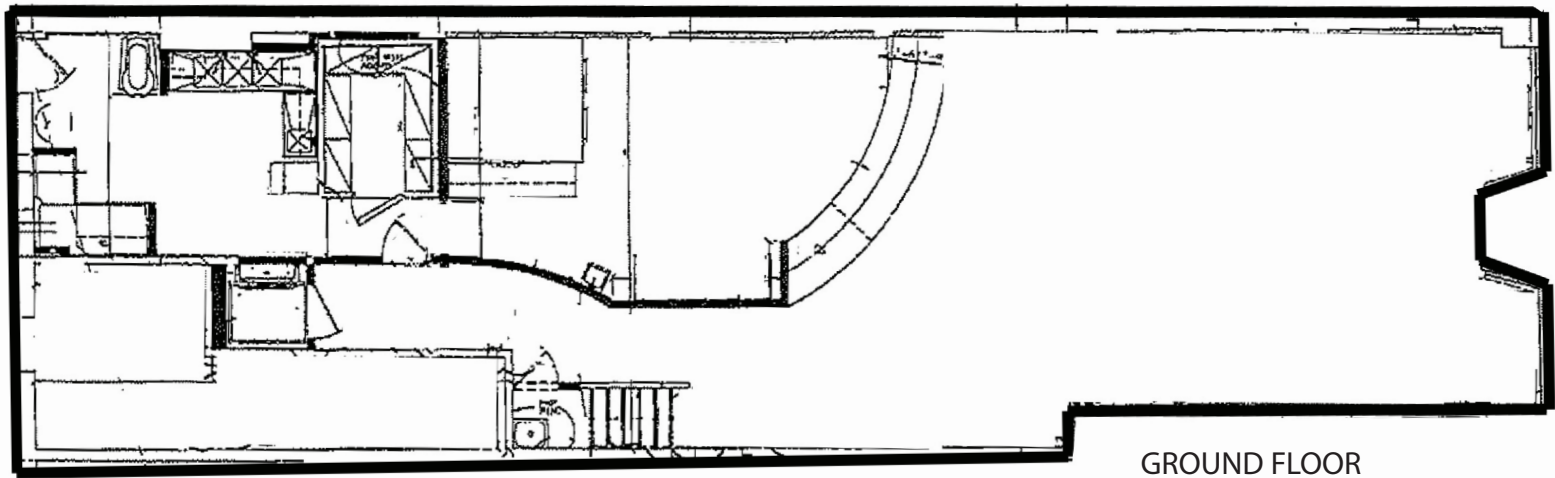
650.847.2000

jmartignetti@ventanaps.com

DRE# 01116935

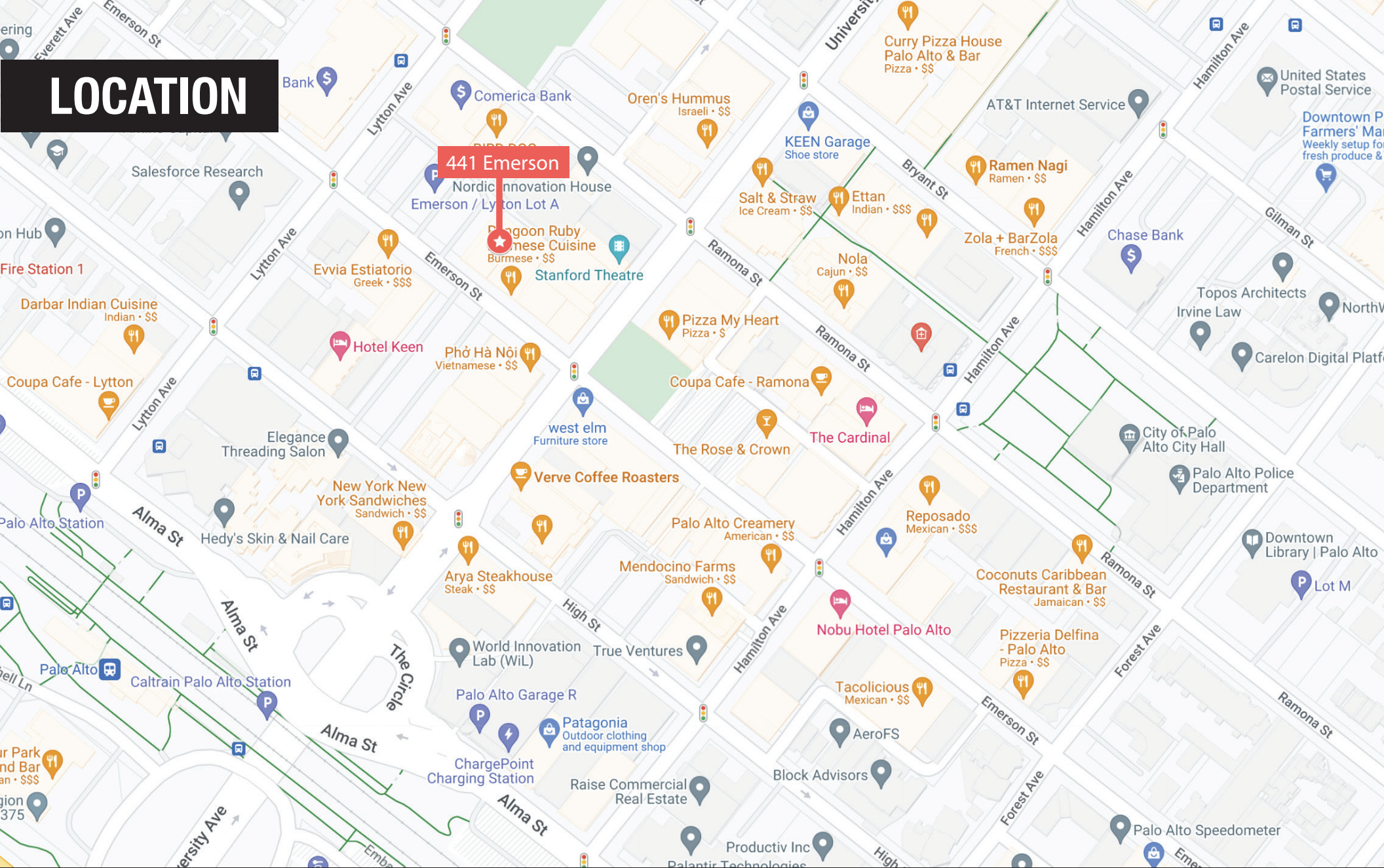
The information contained herein has been given to us by the owner of the property or other sources we deem reliable. We have no reason to doubt its accuracy, but we do not guarantee it. All information should be verified prior to purchase or lease. No warranty or representation, expressed or implied, is made as to the accuracy of the information contained herein.

FLOOR PLAN



*Floor plan is for visual purposes only. Measurements and accuracy should be confirmed on site.

LOCATION



JOE MARTIGNETTI

650.847.2000

jmartignetti@ventanaps.com

DRE# 01116935

The information contained herein has been given to us by the owner of the property or other sources we deem reliable. We have no reason to doubt its accuracy, but we do not guarantee it. All information should be verified prior to purchase or lease. No warranty or representation, expressed or implied, is made as to the accuracy of the information contained herein.