



FOR LEASE

900 Meridian Avenue E
Milton, WA 98354



SURPRISE LAKE SQUARE

Justin Holmes | Josh Parnell | Justice Knox

First Western Properties—Tacoma Inc. | 253.472.0404
6402 Tacoma Mall Blvd, Tacoma, WA 98409 | fwp-inc.com

SURPRISE LAKE SQUARE is a strong, grocery anchored shopping center situated between I-5 and State Route 167. It is a bustling neighborhood shopping center with national anchors such as Safeway and Anytime Fitness. It offers high visibility on the best corner in Milton, along with close proximity to Federal Way, Puyallup, Fife, Kent and Auburn.

AVAILABLE

► SUITE 23: 21,462 SF | JUNIOR ANCHOR | CALL FOR DETAILS

► GROUND LEASE OR BUILD TO SUIT | CALL FOR DETAILS

- **Ample parking at 5/1,000.**
- **Established neighborhood:** Located in a well-established area of Milton with existing residential and commercial development.
- **Accessibility:** Easy access to major roadways like State Route 167, providing convenient connections to surrounding areas.
- **Surrounding amenities:** Depending on the specific unit or business type, potential proximity to various amenities like The Mill Steakhouse, grocery stores, and other businesses in the Surprise Lake Square shopping center.

Regis - 2025	Population	Average HH Income	Daytime Population
Mile 1	9,461	\$140,331	4,238
Mile 3	53,003	\$136,774	36,091
Mile 5	182,943	\$128,291	130,310

TENANTS

SAFeway

DOLLAR TREE

T Mobile

ANYTIME FITNESS

DQ
Grill & Chill

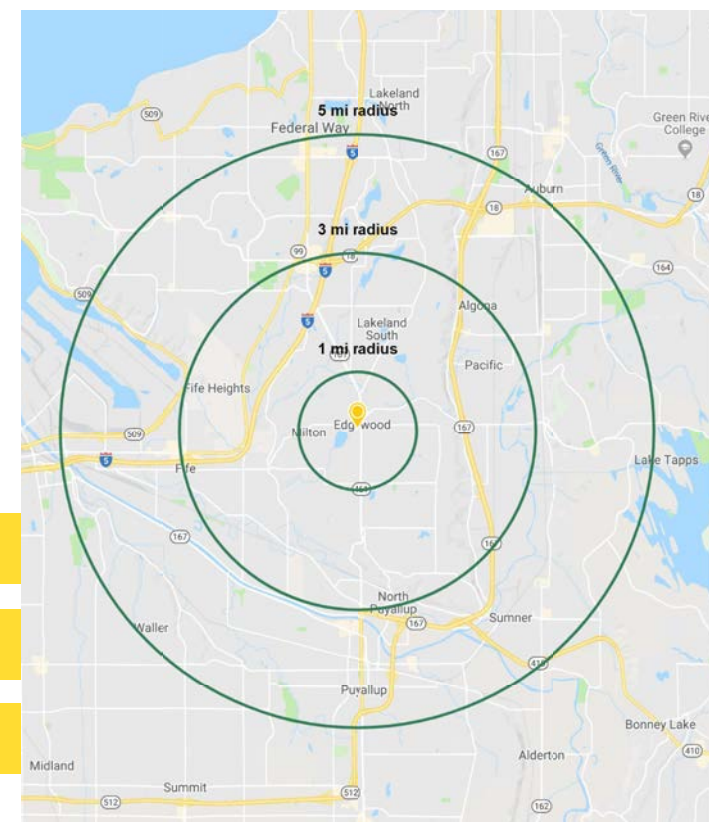
HOPS & DROPS
A Neighborhood Gathering Place

MOD

indigo
MultiCare
URGENT CARE

ups
NOW OPEN!

TONY'S TRUCKS
COMING SOON!



LOCATION DETAILS



26,539 CPD
Meridian Ave E



14,068 CPD
Milton Way

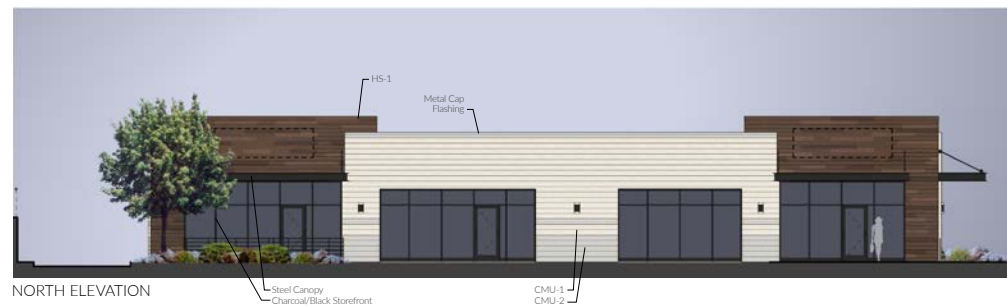


Located in a
busy neighborhood
shopping center



Located between
I-5 and SR-167





Site plan of the 980 Meridian Avenue industrial property. The plan shows a large parking lot with numerous stalls. Buildings are labeled with their addresses and names: 980 (top right), 982 (top left, PAD Bldg A 4,925 SF and PAD Bldg B 4,035 SF), 984 (top center, DO Grill & Chill, indigo MOD, HOPS & DROPS), 986 (bottom left, THE MILL), 988 (bottom center, SAFEWAY, 23), 990 (bottom right, ANYTIME FITNESS, DOLLAR TREE, GROCERY MET). A north arrow is located in the bottom right corner.

Suite	SF	Rate	Details
23	21,462	CALL FOR DETAILS	FOR LEASE
PAD	45,000 +/-	CALL FOR DETAILS	FOR GROUND LEASE OR BTS

SITE PLAN





TACOMA | KIRKLAND | PORTLAND | SEATTLE

RELATIONSHIP FOCUSED. RESULTS DRIVEN.

JUSTIN HOLMES

📞 253.447.2282

✉️ justin@firstwesternproperties.com

JOSH PARNELL

📞 253.284.3630

✉️ josh@firstwesternproperties.com

JUSTICE KNOX

📞 253.471.5501

✉️ jknox@firstwesternproperties.com

First Western Properties—Tacoma Inc. | 253.472.0404
6402 Tacoma Mall Blvd, Tacoma, WA 98409 | fwp-inc.com

© First Western Properties, Inc. DISCLAIMER: The above information has been secured from sources believed to be reliable, however, no representations are made to its accuracy. Prospective tenants or buyers should consult their professional advisors and conduct their own independent investigation. Properties are subject to change in price and/or availability without notice.

