

1541-1595 W. HAMLIN ROAD
UNIT #1559
ROCHESTER HILLS, MICHIGAN

INDUSTRIAL FOR LEASE
1,600 Square Feet Available



**SIGNATURE
ASSOCIATES**
KNOW SIGNATURE | KNOW RESULTS

RO-TECH COMMONS



PROPERTY FEATURES

- 1,600 square feet available
- 16' clear height
- (1) 12' x 12' grade level door
- Zoned Light Industrial
- 200 amps, 240 volts, 3-phase power
- Great small unit close to M-59 and I-75
- Lease Rate: \$13.00/sq. ft. Gross



For more information, please contact:

KRIS PAWLOWSKI
(248) 359 3801
kpawlowski@signatureassociates.com

SIGNATURE ASSOCIATES
One Towne Square, Suite 1200
Southfield, MI 48076
www.signatureassociates.com

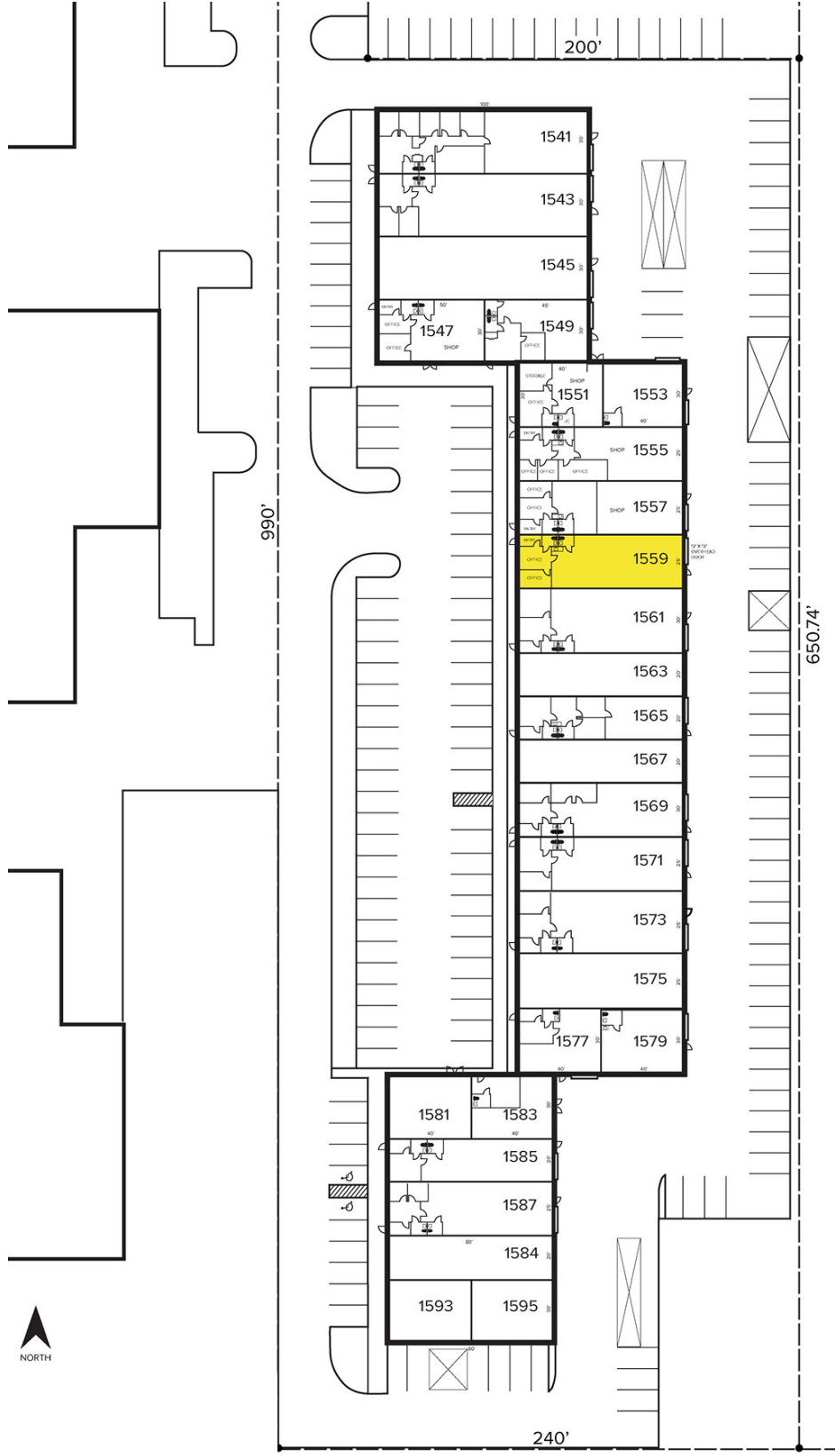
1541-1595 W. Hamlin Road – Rochester Hills, MI

Industrial For Lease

**1,600
Square Feet
AVAILABLE**

Site Plan

AVAILABILITY		
Unit	Total SF & Office SF	Lease Rate
1559	1,600/0	\$13.00/SF G



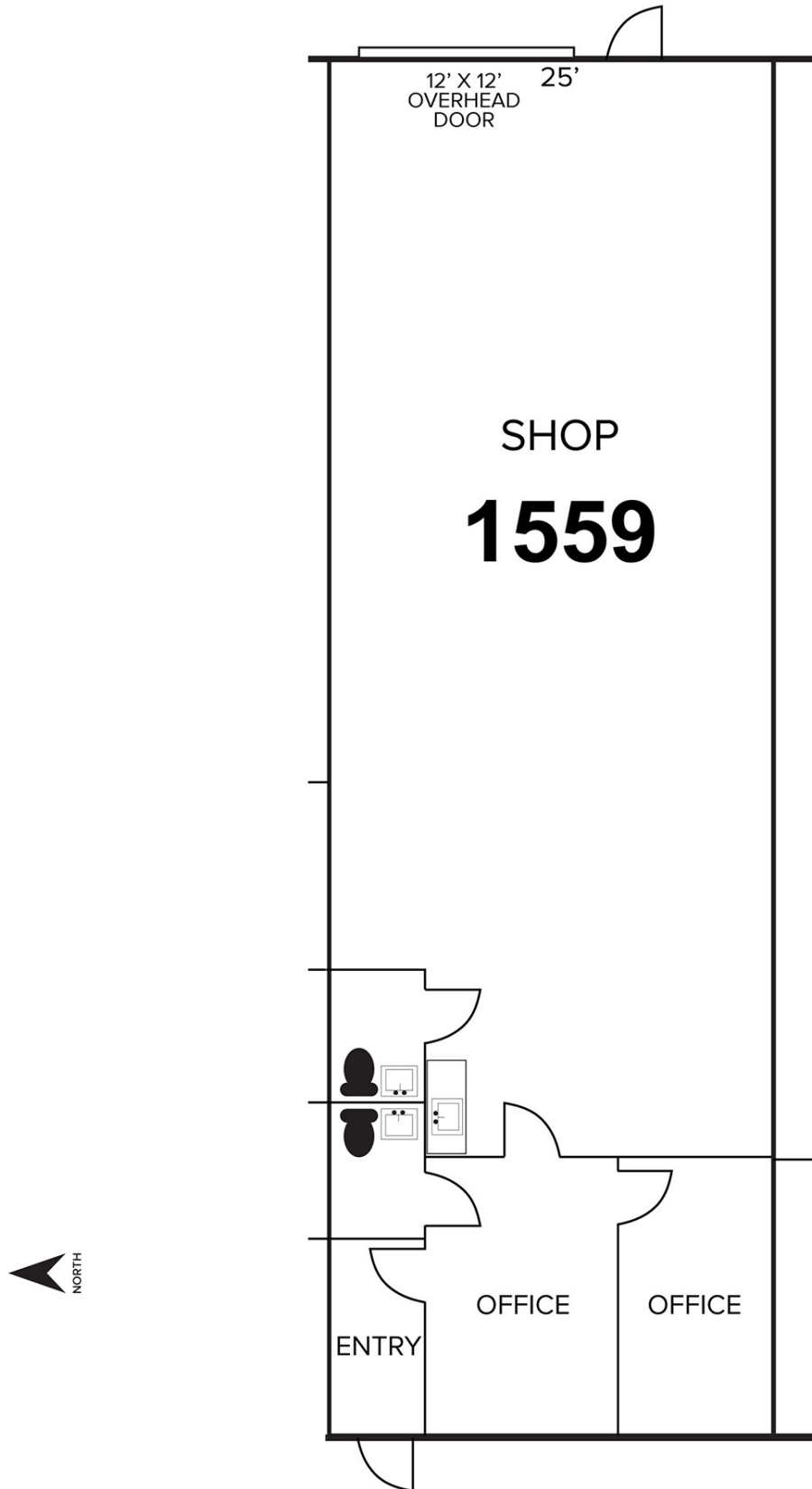
For more information, please contact:

KRIS PAWLOWSKI
 (248) 359 3801
 kpawlowski@signatureassociates.com

SIGNATURE ASSOCIATES
 One Towne Square, Suite 1200
 Southfield, MI 48076
 www.signatureassociates.com

Information is subject to verification and no liability for errors or omissions is assumed. Price is subject to change and listing withdrawal.

Floor Plan



For more information, please contact:

KRIS PAWLOWSKI
(248) 359 3801
kpawlowski@signatureassociates.com

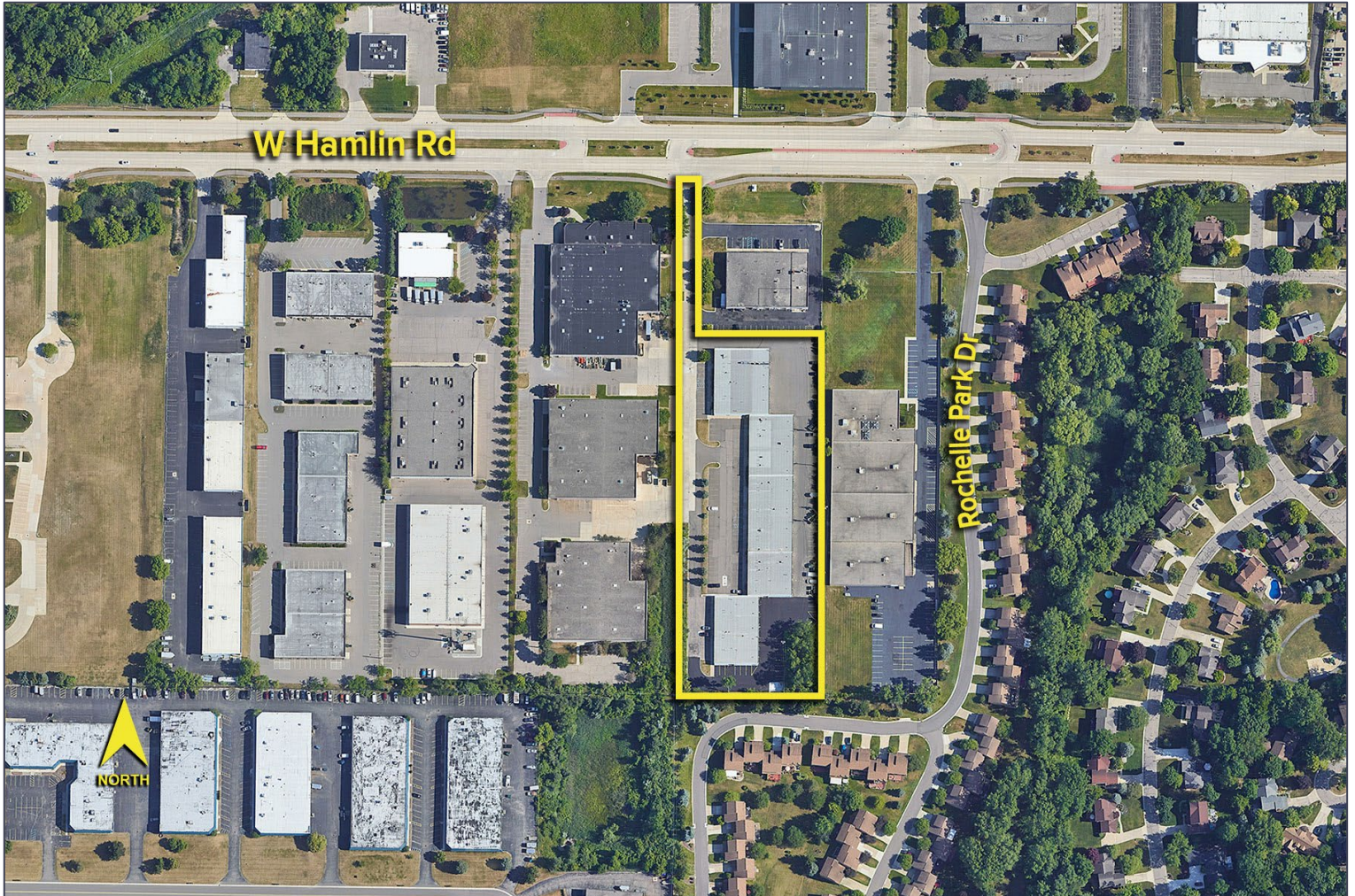
SIGNATURE ASSOCIATES
One Towne Square, Suite 1200
Southfield, MI 48076
www.signatureassociates.com

1541-1595 W. Hamlin Road – Rochester Hills, MI

Industrial For Lease

1,600
Square Feet
AVAILABLE

Aerial



For more information, please contact:

KRIS PAWLOWSKI
(248) 359 3801
kpawlowski@signatureassociates.com

SIGNATURE ASSOCIATES
One Towne Square, Suite 1200
Southfield, MI 48076
www.signatureassociates.com