

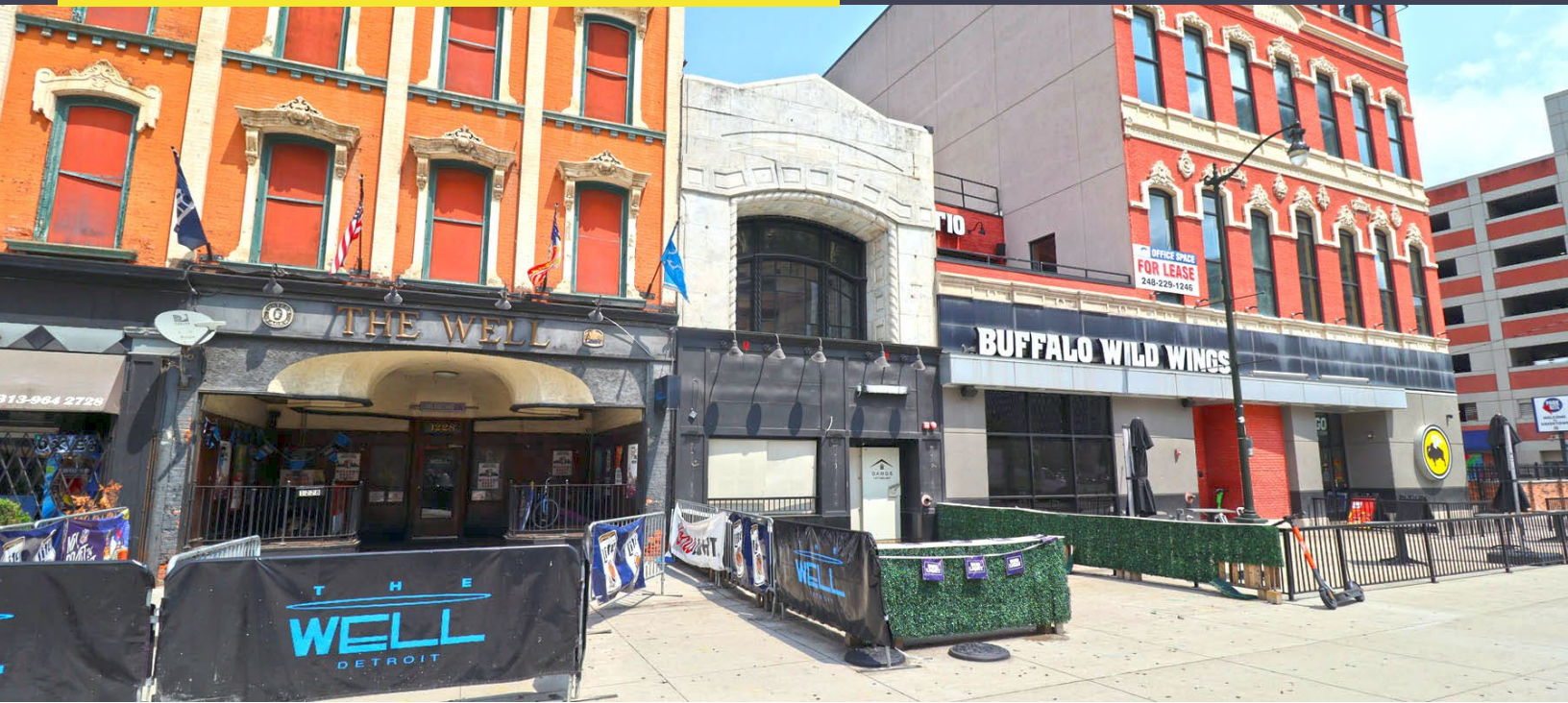
1224 RANDOLPH STREET  
DETROIT, MICHIGAN

RETAIL FOR SALE OR LEASE  
6,300 Square Feet Available



**SIGNATURE  
ASSOCIATES**  
KNOW SIGNATURE | KNOW RESULTS

**RESTAURANT OPPORTUNITY**



## PROPERTY FEATURES

- 6,300 square feet available
- Former burger and pizza restaurant in excellent condition with equipment in place including hood, pizza oven and coolers
- Outside patio possible in this prime downtown location
- Centrally located between the Development at Cadillac Square (anchored by the Cosm Detroit immersive entertainment venue) and the Greektown Monroe Streetscape revitalization, positioning the property within a growing, pedestrian-oriented entertainment corridor
- Turn-key for a restaurant/bar
- Delivery area in rear of building, street parking
- Building signage available
- Zoned B-4
- Lease Rate: \$30.00/sq. ft. NNN
- Sale Price: Contact Brokers



For more information, please contact:

**PETER VANDERKAAY**  
(248) 359 3837

[pvanderkaay@signatureassociates.com](mailto:pvanderkaay@signatureassociates.com)

**BRUCE BAJA**  
(248) 799 3177

[bbaja@signatureassociates.com](mailto:bbaja@signatureassociates.com)

**SIGNATURE ASSOCIATES**  
One Towne Square, Suite 1200  
Southfield, MI 48076  
[www.signatureassociates.com](http://www.signatureassociates.com)



# 1224 Randolph Street – Detroit, Michigan

## Retail For Sale or Lease

6,300  
Square Feet  
AVAILABLE



For more information, please contact:

**PETER VANDERKAAY**

(248) 359 3837

[pvanderkaay@signatureassociates.com](mailto:pvanderkaay@signatureassociates.com)

**BRUCE BAJA**

(248) 799 3177

[bbaja@signatureassociates.com](mailto:bbaja@signatureassociates.com)

**SIGNATURE ASSOCIATES**

One Towne Square, Suite 1200

Southfield, MI 48076

[www.signatureassociates.com](http://www.signatureassociates.com)

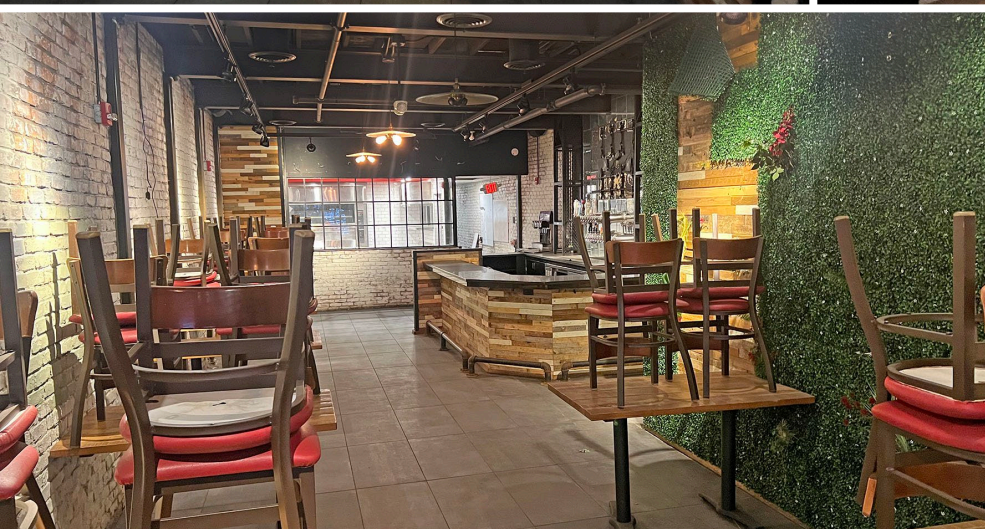
Information is subject to verification and no liability for errors or omissions is assumed. Price is subject to change and listing withdrawal.



# 1224 Randolph Street – Detroit, Michigan

## Retail For Sale or Lease

6,300  
Square Feet  
AVAILABLE



For more information, please contact:

**PETER VANDERKAAY**

(248) 359 3837

[pvanderkaay@signatureassociates.com](mailto:pvanderkaay@signatureassociates.com)

**BRUCE BAJA**

(248) 799 3177

[bbaja@signatureassociates.com](mailto:bbaja@signatureassociates.com)

**SIGNATURE ASSOCIATES**

One Towne Square, Suite 1200

Southfield, MI 48076

[www.signatureassociates.com](http://www.signatureassociates.com)

Information is subject to verification and no liability for errors or omissions is assumed. Price is subject to change and listing withdrawal.

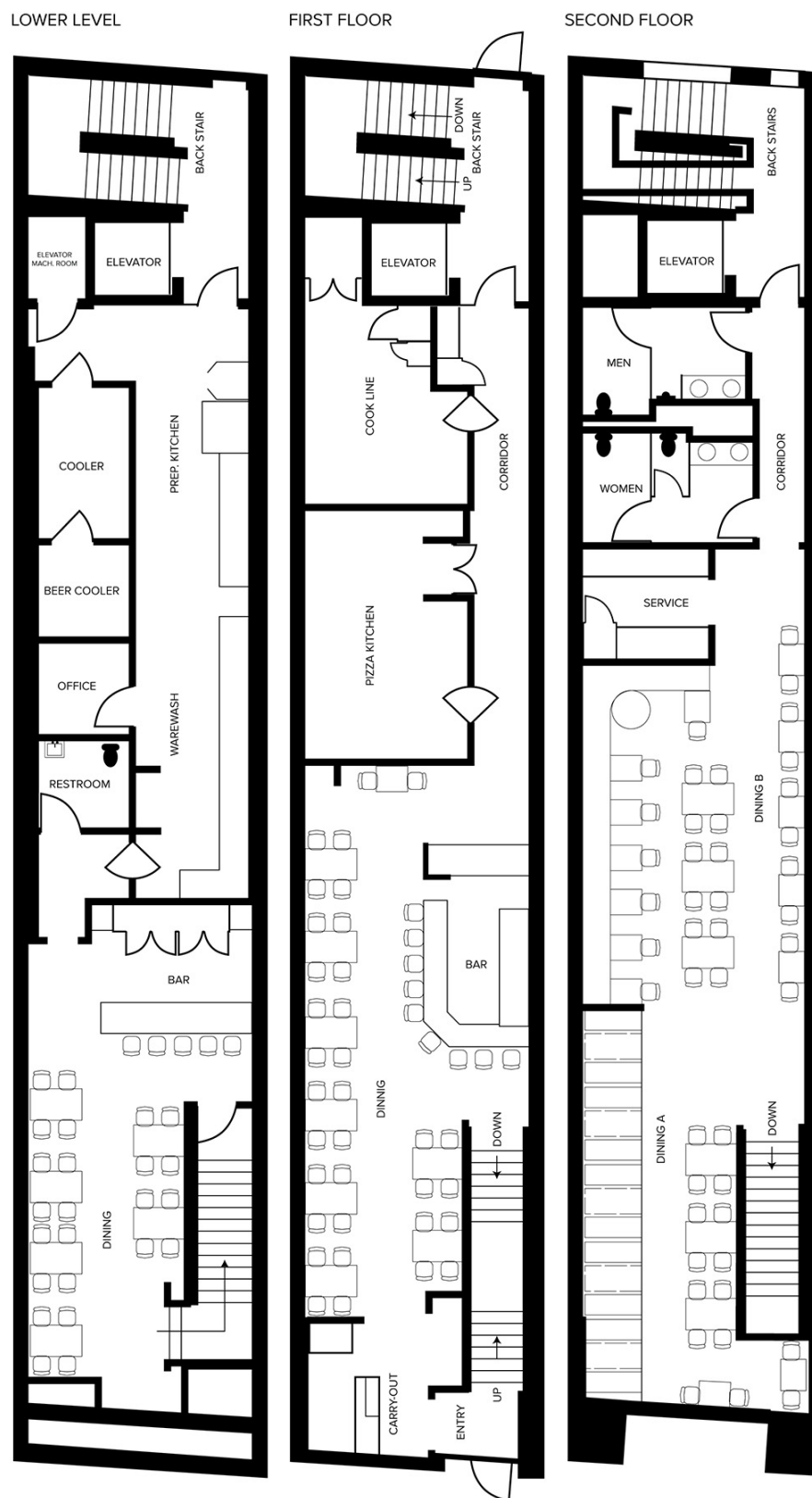


# 1224 Randolph Street – Detroit, Michigan

Retail For Sale or Lease

6,300  
Square Feet  
AVAILABLE

## Floor Plan



For more information, please contact:

**PETER VANDERKAAY**

(248) 359 3837

[pvanderkaay@signatureassociates.com](mailto:pvanderkaay@signatureassociates.com)

**BRUCE BAJA**

(248) 799 3177

[bbaja@signatureassociates.com](mailto:bbaja@signatureassociates.com)

**SIGNATURE ASSOCIATES**

One Towne Square, Suite 1200

Southfield, MI 48076

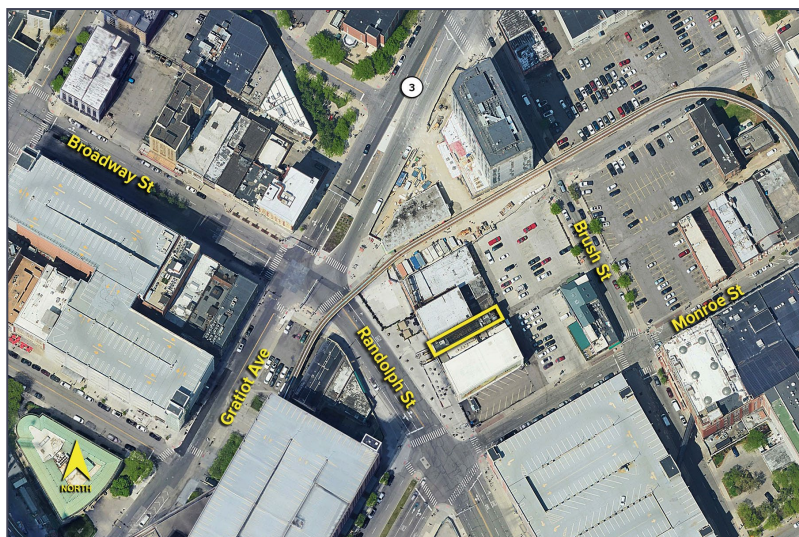
[www.signatureassociates.com](http://www.signatureassociates.com)



# 1224 Randolph Street – Detroit, Michigan

## Retail For Sale or Lease

6,300  
Square Feet  
AVAILABLE

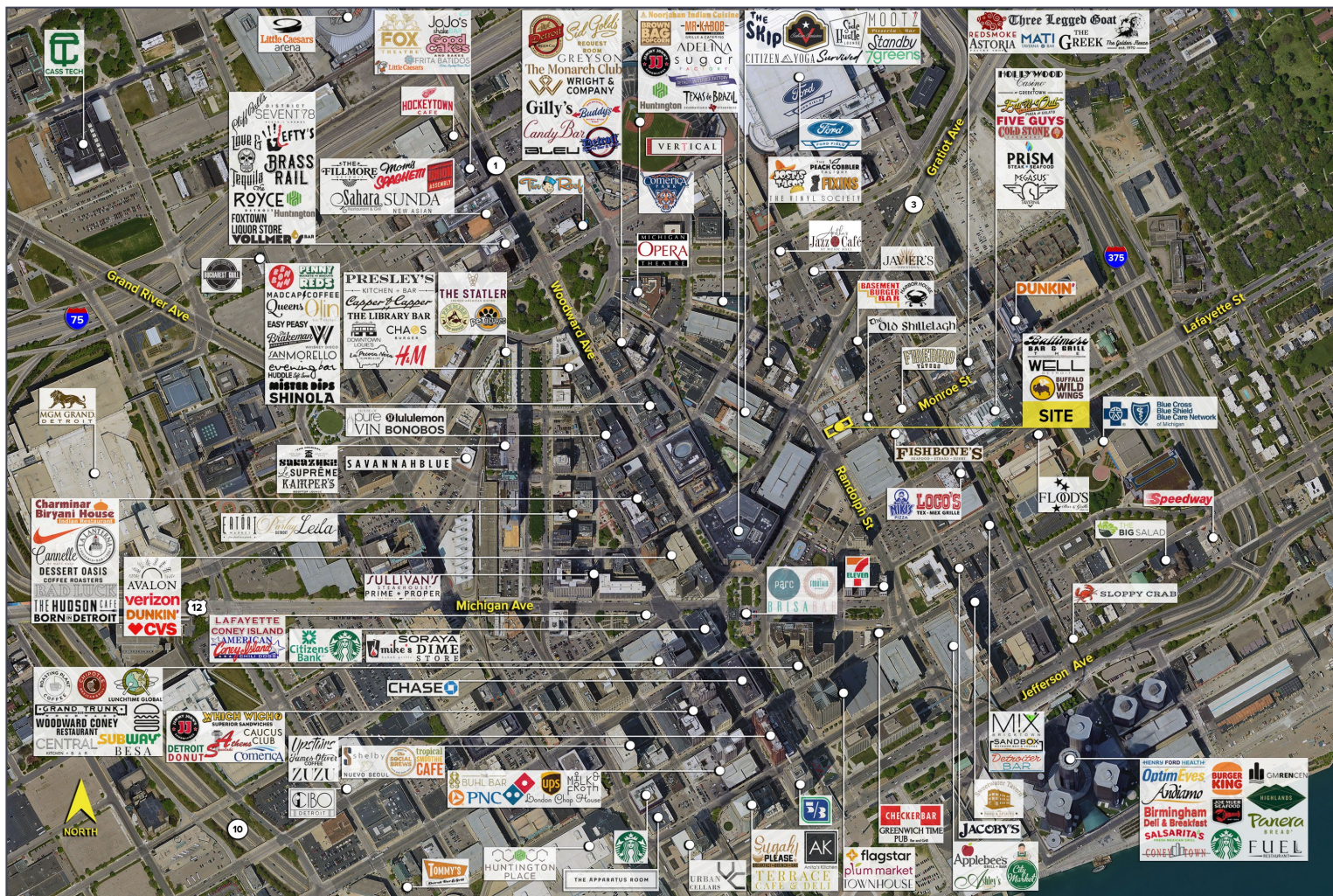


### DEMOGRAPHICS

	POPULATION	MED. HH INCOME
1 MILE	16,271	\$61,587
3 MILE	74,548	\$49,063
5 MILE	209,213	\$45,850

### TRAFFIC COUNTS (TWO-WAY)

12,254	Randolph St. S of Gratiot Ave.
6,789	Randolph St. N of Gratiot Ave.
13,170	Gratiot Ave. E of Randolph St.
4,812	Gratiot Ave. E of Randolph St.



For more information, please contact:

**PETER VANDERKAAY**

(248) 359 3837

[pvanderkaay@signatureassociates.com](mailto:pvanderkaay@signatureassociates.com)

**BRUCE BAJA**

(248) 799 3177

[bbaja@signatureassociates.com](mailto:bbaja@signatureassociates.com)

**SIGNATURE ASSOCIATES**

One Towne Square, Suite 1200

Southfield, MI 48076

[www.signatureassociates.com](http://www.signatureassociates.com)