

2601 West Parrish Place

OWENSBORO, KY

The West Parrish Place Shopping Center at 2601 W Parrish Avenue in Owensboro, Kentucky is a 16,394 square foot retail strip center built in 2016 with established co-tenants and available lease spaces ranging from 1,100 to 1,400 square feet at \$18.50 per square foot annually.

- Building Details: 16,394 total square feet completed in 2016
- Available Space: 3 retail spaces ranging 1,100 - 1,400 SF
- Lease Rate: \$18.50 per square foot per year
- Lease Terms: Negotiable / NNN
- Established Co-tenants: Thai Food of Owensboro, Mi Ranchito, Edward Jones, T-Mobile, and Donatos Pizza
- Prime Location: Located on thriving West Parrish Avenue corridor, close to Moonlite Bar-B-Q
- Move-in Ready: Space is thoughtfully built out and ready to occupy
- Ideal Uses: Office, Nail Salon, Insurance agent, Bakery, and similar businesses









Metrics

Jun 1, 2024 - May 31, 2025

Metrics

2601 W Parrish Place Shopping Ce...
2601 West Parrish Pl, Owensboro, KY 42303

Visits	159.9K	Sales	N/A
Visitors	46.5K	Visits YoY	+10.6%
Visit Frequency	3.44	Visits Yo2Y	+14.9%
Avg. Dwell Time	33 min	Visits Yo3Y	+53.5%

Jun 1st, 2024 - May 31st, 2025
Data provided by Placer Labs Inc. (www.placer.ai)



Visits Trend

Jun 1, 2024 - May 31, 2025



Visits Trend

2601 W Parrish Place Shopping ...
West Parrish Pl, Owensboro, KY



Weekly | Visits | Jun 1st, 2024 - May 31st, 2025
Data provided by Placer Labs Inc. (www.placer.ai)



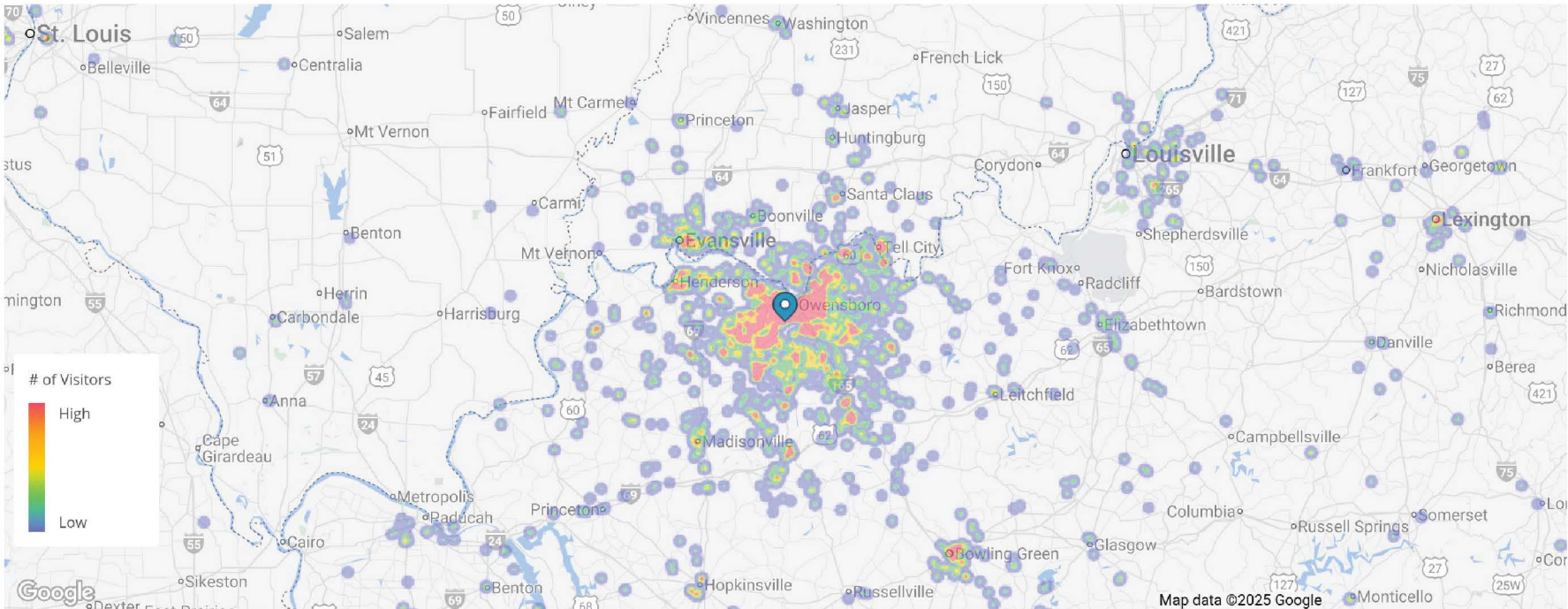
Trade Area

Jun 1, 2024 - May 31, 2025



Trade Area

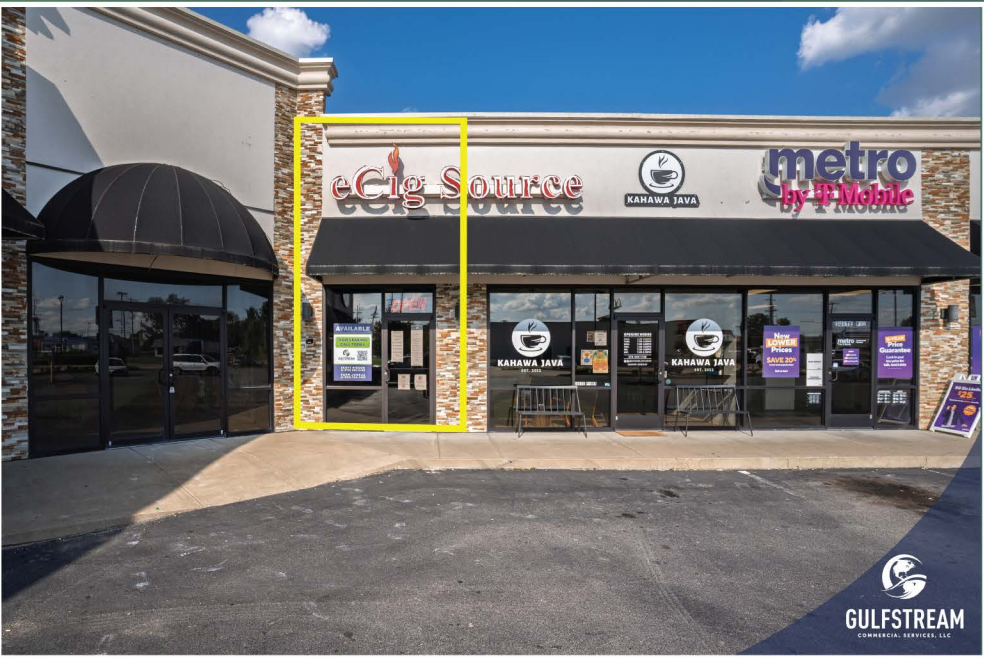
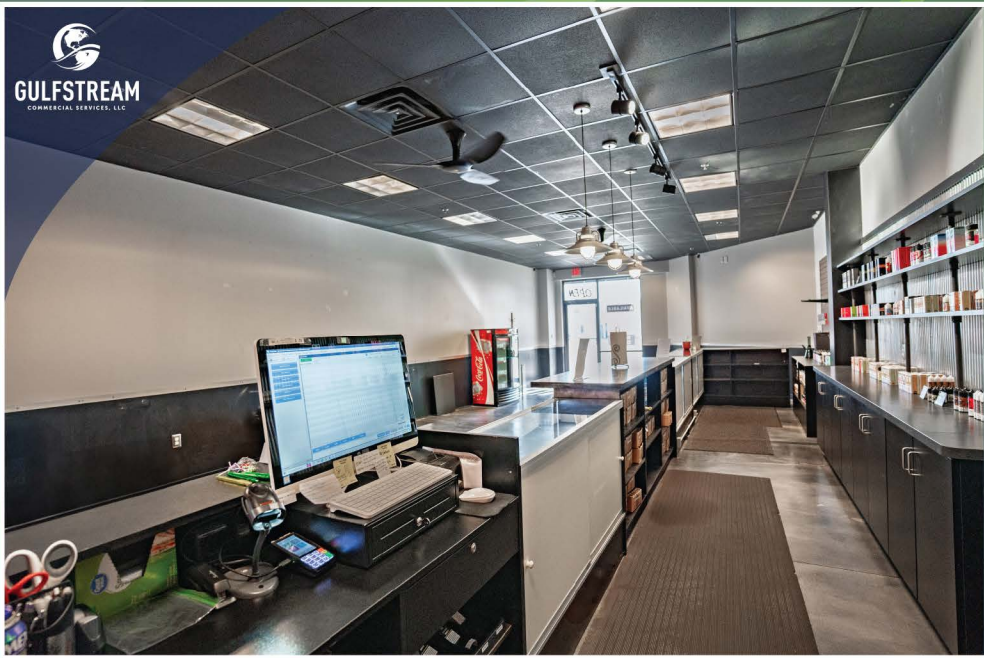
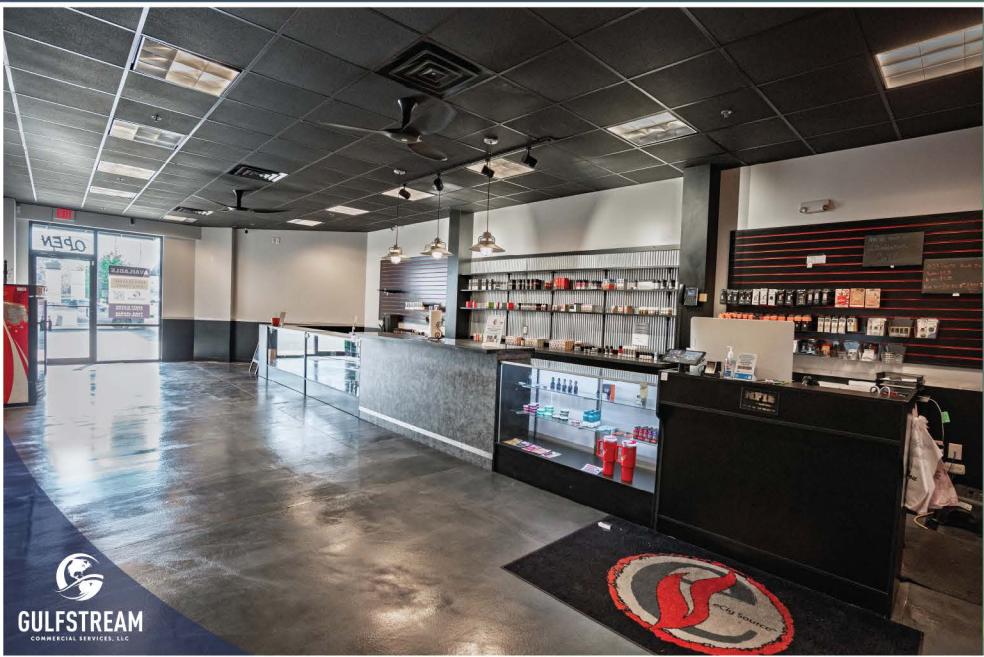
2601 W Parrish Place Shopping Center
2601 West Parrish Pl, Owensboro, KY 42303



Home locations are obfuscated for privacy and randomly placed within a census block. They do not represent actual home addresses.

Jun 1st, 2024 - May 31st, 2025
Data provided by Placer Labs Inc. (www.placer.ai)

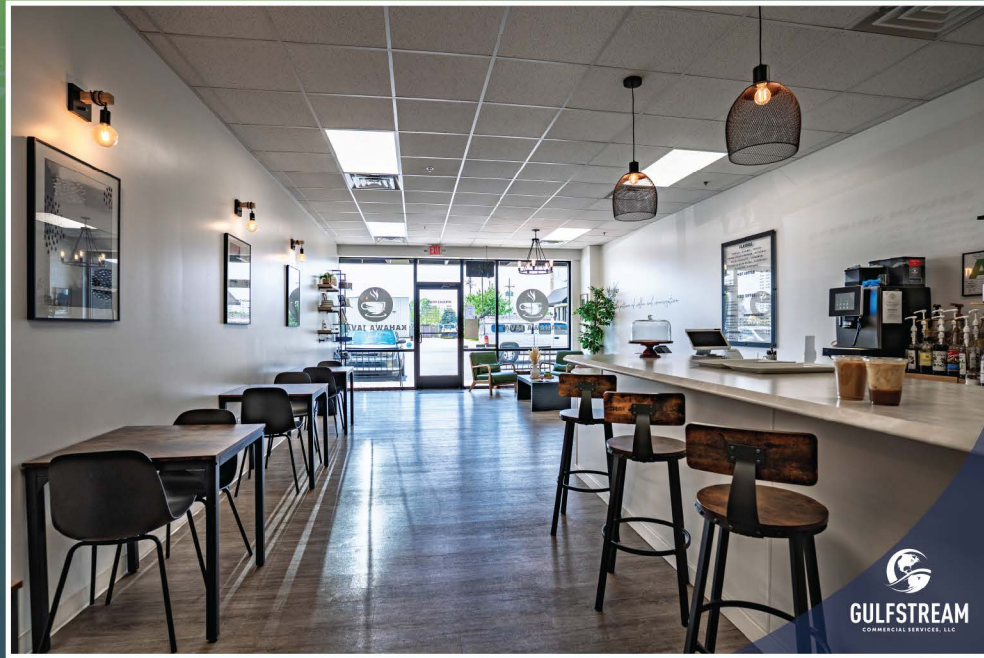
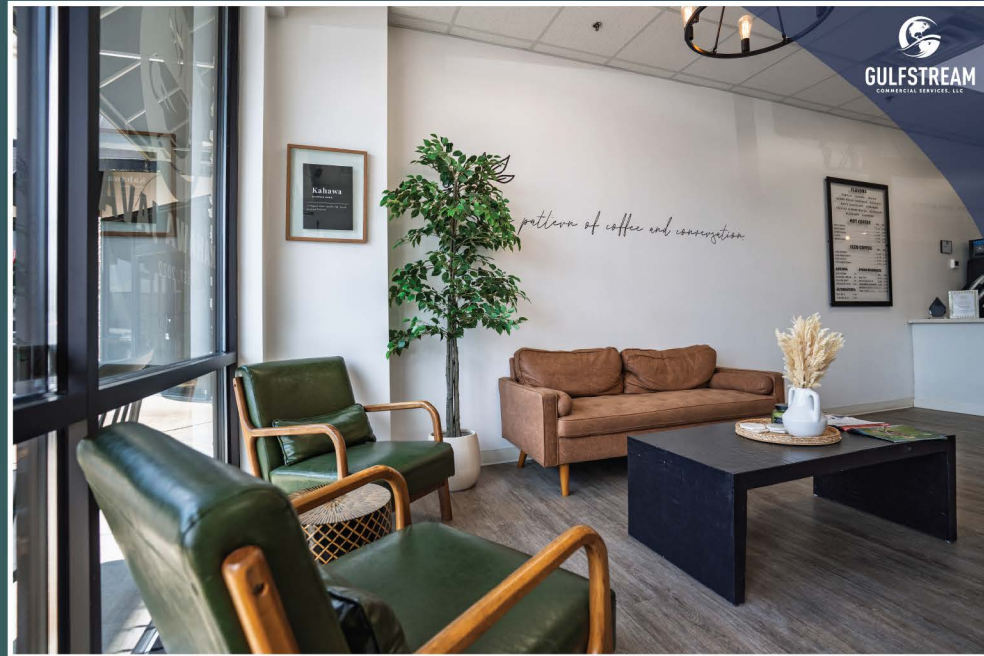


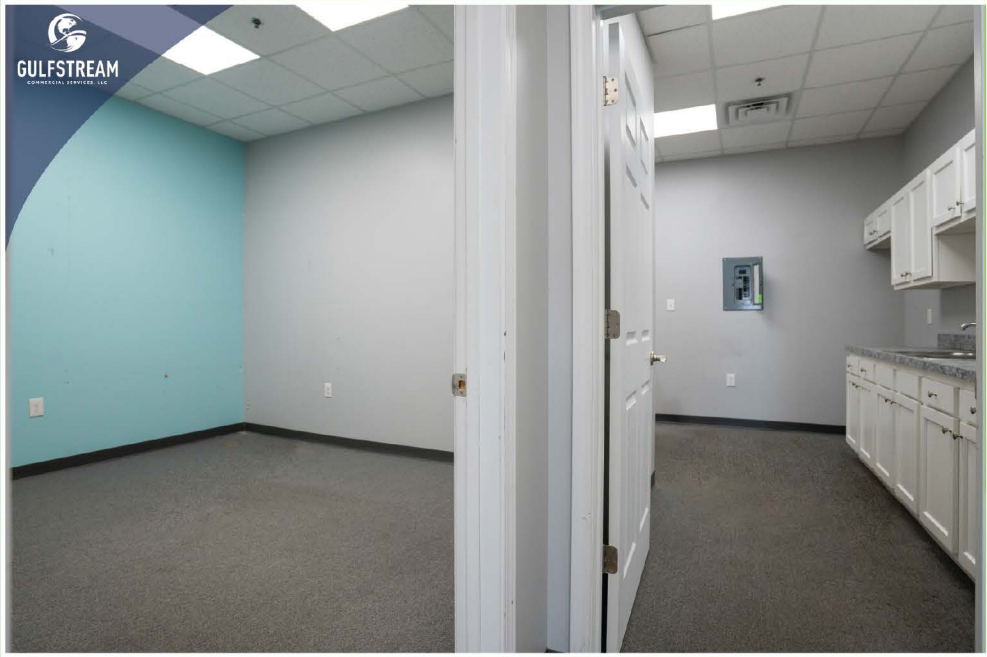


Fahr Juneja
(502) 744-1465
Fahr@GulfstreamDev.com



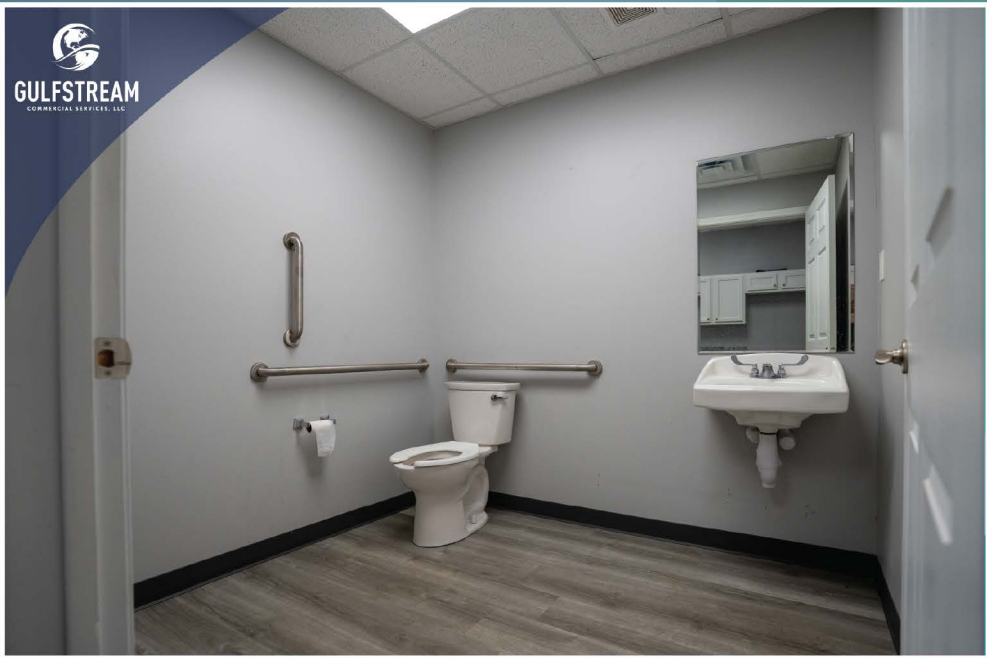
Scott Higdon
(270) 993-9198
SHigdon@GulfstreamDev.com





GULFSTREAM

COMMERCIAL SERVICES, LLC



CRE Brokerage, Management, Development,
and **Investment Partners** from the ground up.