

RETAIL SPACE FOR LEASE



68 KENNEDY PLAZA

Providence, RI 02903

DAN FEINER

Vice President
401.751.3200 x3310
dan@mgcommercial.com

MG COMMERCIAL

365 Eddy Street, Penthouse Suite
Providence, RI 02903
401.751.3200 | mgcommercial.com

PROPERTY SUMMARY



PROPERTY DESCRIPTION

This 2,000 SF commercial space is perfect for office, medical and/or retail. The current floor plan provides 6 exam rooms with sinks, two offices, a front reception area and waiting room. The current floor plan is very efficient or alternatively interior walls can be removed for more open space. There is very strong foot traffic and the unit has excellent street visibility to support its business.

PROPERTY HIGHLIGHTS

- Ideal location in the financial/business district
- Walking distance to many amenities including shopping, banking & restaurants
- Adjacent to Kennedy Plaza / RIPTA
- Very busy area and strong foot traffic
- Zoning: D-1-300

LOCATION DESCRIPTION

Located in the heart of Providences central business district and walking distance to Providence Place Mall, City Hall, The Graduate Hotel, The Providence Convention Center, banks, restaurants and retail amenities. It is conveniently adjacent to Kennedy Plaza and is a short walk to the Amtrak / MBTA station.

OFFERING SUMMARY

Lease Rate:	\$25.00 SF/yr (NNN)
Available SF:	2,000 SF
Building Size:	10,004 SF

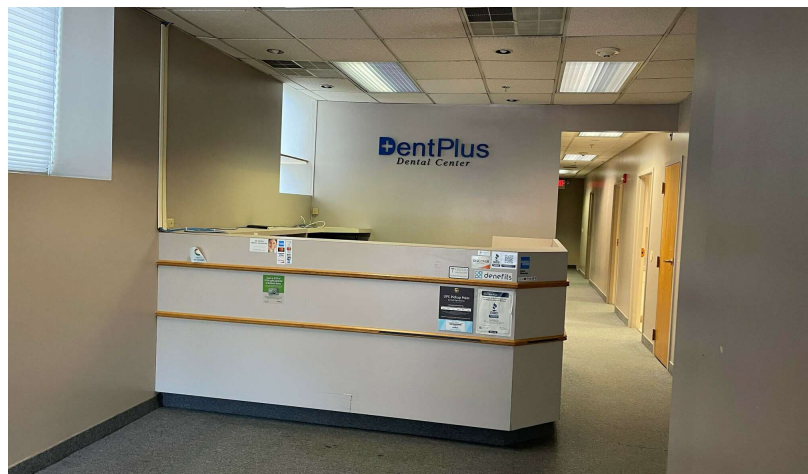
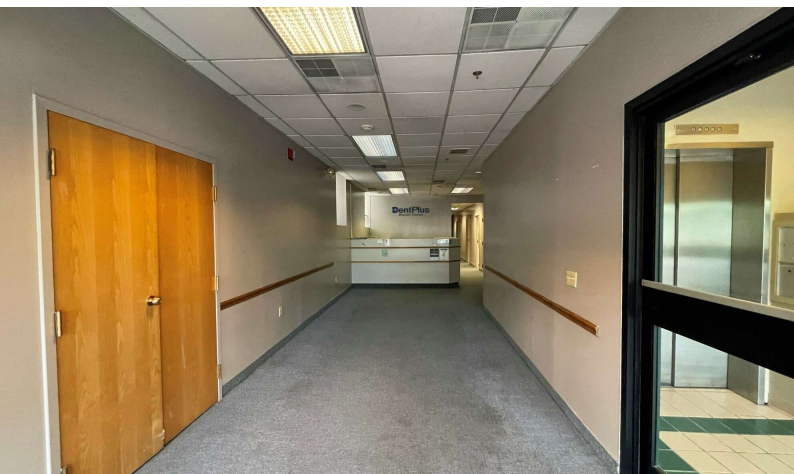
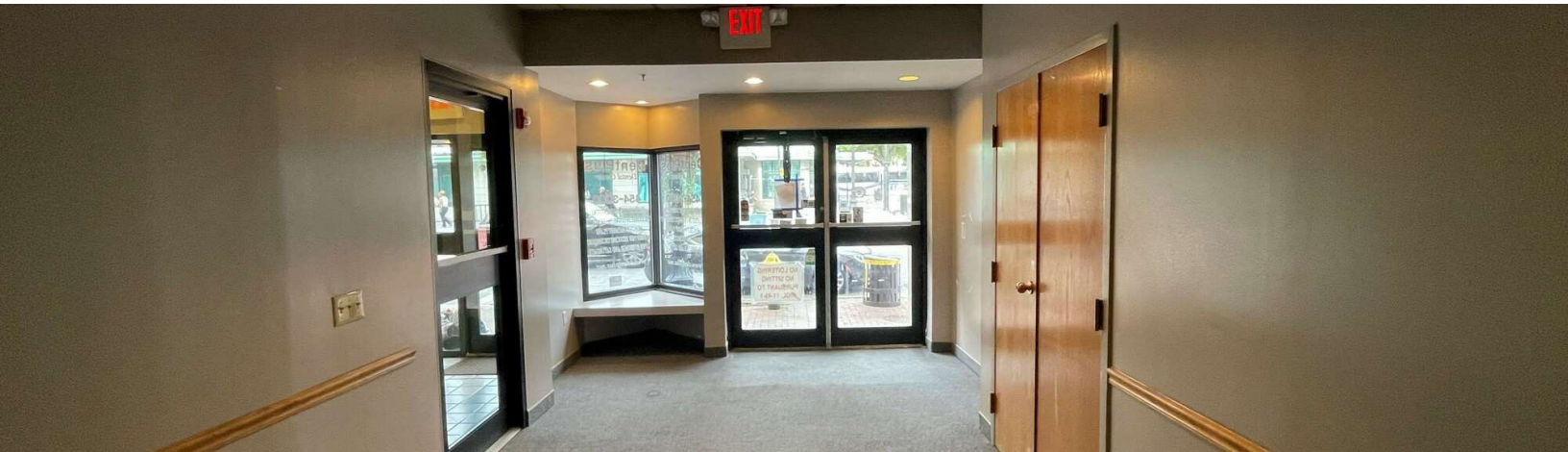
DEMOGRAPHICS	0.5 MILES	1 MILE	3 MILES
Total Households	3,313	12,667	88,191
Total Population	10,623	32,630	233,109
Average HH Income	\$173,830	\$132,491	\$92,513

DAN FEINER
 Vice President
 401.751.3200 x3310
 dan@mgcommercial.com

365 Eddy Street, Penthouse Suite
 Providence, RI 02903
 mgcommercial.com



ADDITIONAL PHOTOS



DAN FEINER

Vice President
401.751.3200 x3310
dan@mgcommercial.com

365 Eddy Street, Penthouse Suite
Providence, RI 02903
mgcommercial.com



AREA MAP



DAN FEINER
 Vice President
 401.751.3200 x3310
 dan@mgcommercial.com

365 Eddy Street, Penthouse Suite
 Providence, RI 02903
 mgcommercial.com

