

# 2711 N. Harbor City Blvd

MELBOURNE, FLORIDA 32935

10.88 ACRES OF CLEARED LAND FOR SALE

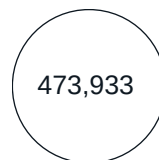


\*BOUNDARY LINES ARE ESTIMATED FOR ILLUSTRATIVE PURPOSES.

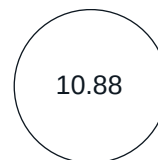
## For those ready for what's next



**ASKING PRICE (\$)**



**LOT SIZE (SF)**



**LOT SIZE (AC)**

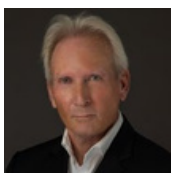


**TOPOGRAPHY**



**FRONTAGE (FT)**

ONE Commercial Real Estate is pleased to present this opportunity to acquire a 10.88-acre, prime, river-view residential/commercial redevelopment site in the Eau Gallie area of Melbourne, Florida, an area experiencing explosive growth along the east coast of Central Florida. The property has two-street access with approximately 270 feet of frontage on US Highway 1 and approximately 580 feet along Pineapple Avenue. The site is currently improved with a church and a school totaling 25,000 square feet and has been cleared and mowed. Water and sewer are to the site.

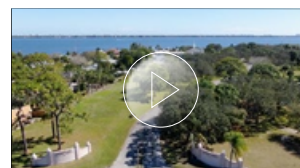


**ALAN KING, CCIM**

COMMERCIAL ASSOCIATE

321.480.4673

alan.king133@gmail.com



**PROPERTY AERIAL VIDEO**



# 2711 N. Harbor City Blvd

MELBOURNE, FLORIDA 32935

10.88 ACRES OF CLEARED LAND FOR SALE



**NATIONAL REALTY**  
COMMERCIAL ASSOCIATES





# 2711 N. Harbor City Blvd

MELBOURNE, FLORIDA 32935

10.88 ACRES OF CLEARED LAND FOR SALE





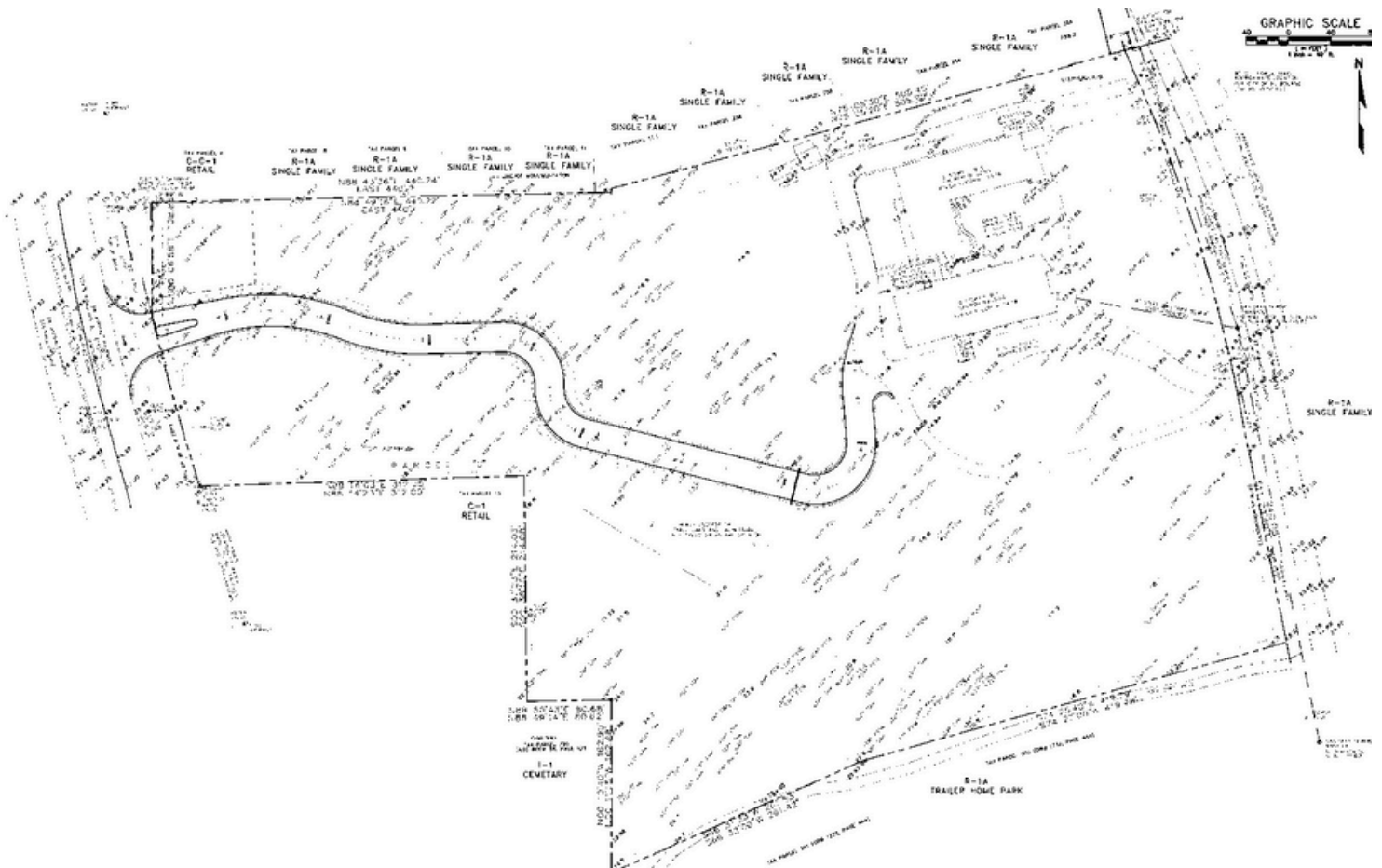
# 2711 N. Harbor City Blvd

MELBOURNE, FLORIDA 32935

10.88 ACRES OF CLEARED LAND FOR SALE



**NATIONAL REALTY**  
COMMERCIAL ASSOCIATES





# 2711 N. Harbor City Blvd

MELBOURNE, FLORIDA 32935

10.88 ACRES OF CLEARED LAND FOR SALE





# 2711 N. Harbor City Blvd

MELBOURNE, FLORIDA 32935

10.88 ACRES OF CLEARED LAND FOR SALE

