

1641 10TH STREET
PORT HURON, MICHIGAN

MEDICAL FOR SALE OR LEASE
4,000 Square Feet Available



**SIGNATURE
ASSOCIATES**
KNOW SIGNATURE | KNOW RESULTS

FREESTANDING MEDICAL BUILDING



PROPERTY FEATURES

- 4,000 square feet available
- Highly visible, freestanding medical building
- Adjacent to Walgreens
- (12) exam rooms, lab, and x-ray room
- Efficient layout and patient flow
- Lease Rate: \$18.00/sq. ft. NNN
- Sale Price: \$682,000 (\$170.50/sq. ft.)



For more information, please contact:

JEFFREY TREPECK
(248) 359 0626
jtrepeck@signatureassociates.com

SIGNATURE ASSOCIATES
One Towne Square, Suite 1200
Southfield, MI 48076
www.signatureassociates.com

Information is subject to verification and no liability for errors or omissions is assumed. Price is subject to change and listing withdrawal.

1641 10th Street – Port Huron, Michigan

Medical For Sale or Lease

4,000
Square Feet
AVAILABLE

Interior Photos



For more information, please contact:

JEFFREY TREPECK
(248) 359 0626
jtrepeck@signatureassociates.com

SIGNATURE ASSOCIATES
One Towne Square, Suite 1200
Southfield, MI 48076
www.signatureassociates.com

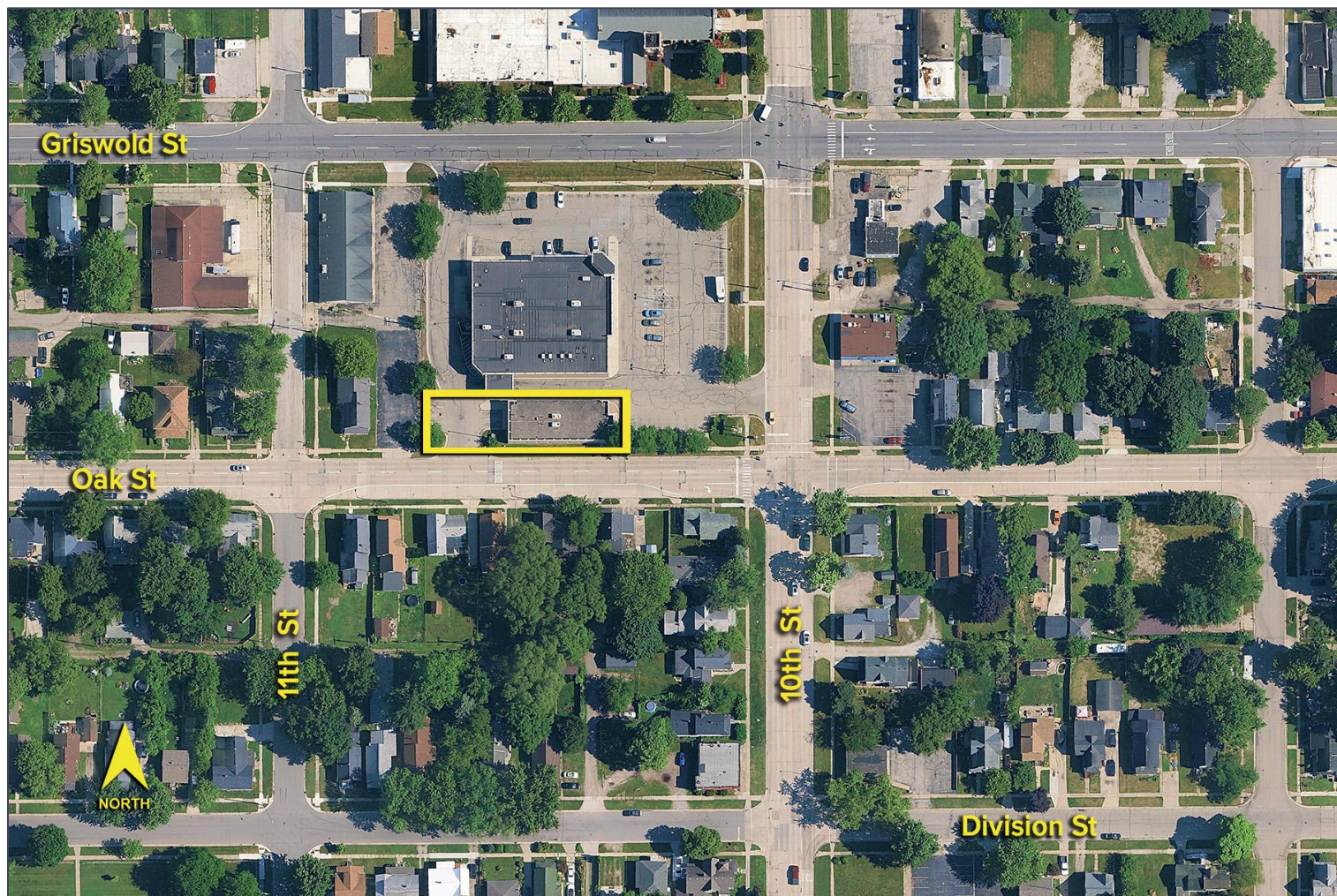
Information is subject to verification and no liability for errors or omissions is assumed. Price is subject to change and listing withdrawal.

1641 10th Street – Port Huron, Michigan

Medical For Sale or Lease

4,000
Square Feet
AVAILABLE

Aerial



For more information, please contact:

JEFFREY TREPECK
(248) 359 0626
jtrepeck@signatureassociates.com

SIGNATURE ASSOCIATES
One Towne Square, Suite 1200
Southfield, MI 48076
www.signatureassociates.com

Information is subject to verification and no liability for errors or omissions is assumed. Price is subject to change and listing withdrawal.